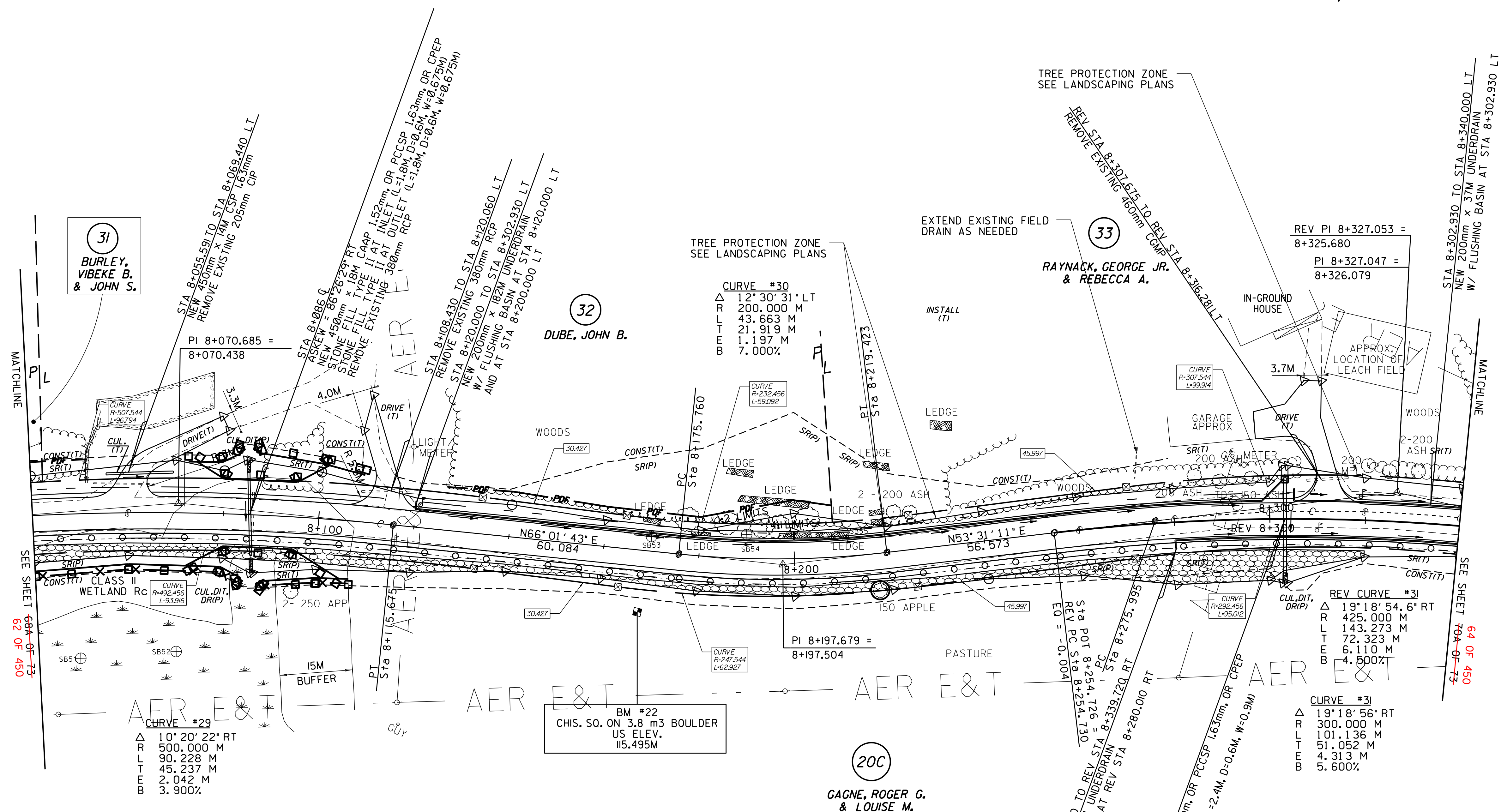
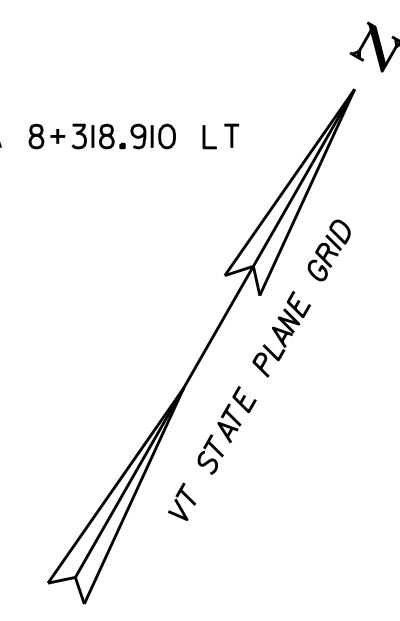


**CONSTRUCT DRIVE**  
 STA 8+060.000 LT GRAVEL  
 STA 8+118.000 LT GRAVEL  
 REV 8+309.000 LT GRAVEL  
**STONE FILL, TYPE II**  
 STA 8+040.000 TO REV STA 8+339.720 RT

**CONSTRUCT SPECIAL DITCH**  
 STA 8+065.000 TO STA 8+080.000 LT  
 STA 8+180.000 TO STA 8+220.000 LT  
 REV STA 8+316.000 TO REV STA 8+357.000 LT

**RELOCATE MAIL BOX, SINGLE SUPPORT**  
 STA 8+118.000 RT TO 8+121.4282 LT  
 REV STA 8+309.890 RT TO REV STA 8+318.910 LT

**GRUBBING MATERIAL**  
 STA 8+040.000 TO REV STA 8+339.720 RT  
**EROSION MATTING (JUTE)**  
 STA 8+040.000 TO REV STA 8+339.720 RT  
**STEEL BEAM GUARDRAIL**  
 STA 8+040.000 TO REV STA 8+339.720 RT



SEE SHEET 68A OF 73  
 62 OF 450

SEE SHEET 70A OF 73  
 64 OF 450



○ DENOTES TREE OR STUMP REMOVAL

- NOTES:**
1. ALL SIDE ROAD RADII SHALL BE 11M UNLESS OTHERWISE NOTED. REFER TO STD B-12M
  2. ALL DRIVE RADII SHALL BE 6M UNLESS OTHERWISE NOTED. REFER TO STD B-7M

LINES SHOWN ON THIS PLAN AS EXISTING PROPERTY LINES P/L ARE BELIEVED TO BE ACCURATE BUT SHOULD NOT BE RELIED UPON FOR PURPOSES UNRELATED TO THE STATE OF VERMONT'S ACQUISITION OF LAND AND RIGHTS FOR THIS PROJECT.

**FOR R.O.W. USE ONLY**

SEE LAYOUT SHEETS FOR CONSTRUCTION CHANGES

(R.O.W. AS BUILT)

PROJECT NAME:	HIGHGATE-FRANKLIN (AS BUILT)
PROJECT NUMBER:	STP RS 0301(I) SA
FILE NAME:	NAME\$DGN
PROJECT LEADER:	DELLASANTA
DESIGNED BY:	SQUAD B
ROW LAYOUT SHEET	22A OF 26 69 OF 73
PLOT DATE:	12-FEB-2014 11:47
DRAWN BY:	N. GARBACH ROW
CHECKED BY:	H. PETROVS
SHEET	63 69A OF 73 450