

CONSTRUCT DRIVE  
 STA 7+749.000 RT GRAVEL  
 STA 7+827.000 LT GRAVEL

MANUFACTURED TERMINAL SECTION (TANGENTIAL)  
 STA 7+763.682 TO STA 7+778.896 RT  
 STEEL BEAM GUARDRAIL  
 STA 7+778.896 TO STA 8+040.000 RT

CONSTRUCT SPECIAL DITCH  
 STA 7+720.000 TO STA 7+747.000 LT  
 STA 7+751.000 TO STA 7+910.000 LT  
 STA 7+950.000 TO STA 8+030.000 LT  
 STA 7+950.000 TO STA 7+810.020 RT

GRUBBING MATERIAL  
 STA 7+720.000 TO STA 7+732.786 RT  
 STA 8+810.020 TO STA 8+040.000 RT

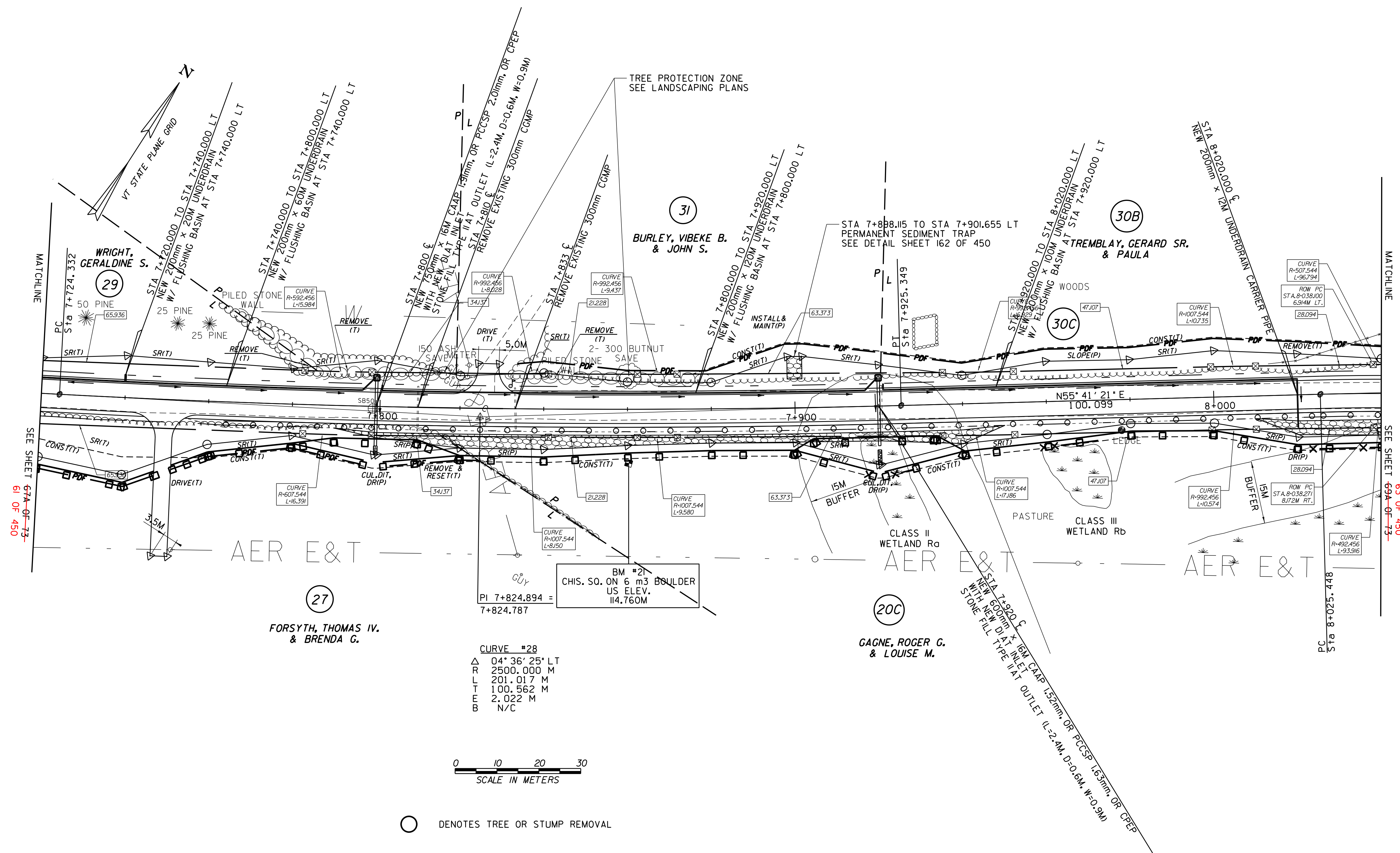
EROSION MATTING (JUTE)  
 STA 7+720.000 TO STA 7+732.786 RT  
 STA 8+810.020 TO STA 8+040.000 RT

REMOVING AND RESETTING FENCE  
 STA 7+815.817 RT - 6M BACK

STONE FILL, TYPE II  
 STA 7+720.000 TO STA 7+732.786 RT  
 STA 8+810.020 TO STA 8+040.000 RT

RELOCATE MAIL BOX, SINGLE SUPPORT  
 STA 7+830.370 RT TO STA 7+832.088 LT

REMOVAL OF EXISTING FENCE  
 STA 8+013.200 TO STA 8+033.200 LT



SEE SHEET 67A OF 73  
61 OF 450

SEE SHEET 69A OF 73  
63 OF 450

AER E&T

AER E&T

AER E&T

27  
 FORSYTH, THOMAS IV.  
 & BRENDA G.

20C  
 GAGNE, ROGER G.  
 & LOUISE M.

CURVE #28  
 Δ 04° 36' 25" LT  
 R 2500.000 M  
 L 201.017 M  
 T 100.562 M  
 E 2.022 M  
 B N/C



○ DENOTES TREE OR STUMP REMOVAL

- NOTES:
1. ALL SIDE ROAD RADII SHALL BE 11M UNLESS OTHERWISE NOTED. REFER TO STD B-12M
  2. ALL DRIVE RADII SHALL BE 6M UNLESS OTHERWISE NOTED. REFER TO STD B-7M

LINES SHOWN ON THIS PLAN AS EXISTING PROPERTY LINES P/L ARE BELIEVED TO BE ACCURATE BUT SHOULD NOT BE RELIED UPON FOR PURPOSES UNRELATED TO THE STATE OF VERMONT'S ACQUISITION OF LAND AND RIGHTS FOR THIS PROJECT.

**FOR R.O.W. USE ONLY**

SEE LAYOUT SHEETS FOR CONSTRUCTION CHANGES

(R.O.W. AS BUILT)

PROJECT NAME:	HIGHGATE-FRANKLIN (AS BUILT)
PROJECT NUMBER:	STP RS 0301(I) SA
FILE NAME:	NAME\$DGN
PROJECT LEADER:	DELLASANTA
DESIGNED BY:	SQUAD B
ROW LAYOUT SHEET	21A OF 26 68 OF 73
PLOT DATE:	12-FEB-2014 11:47
DRAWN BY:	N. GARBACH ROW
CHECKED BY:	H. PETROVS
SHEET	62 68A OF 73 450