

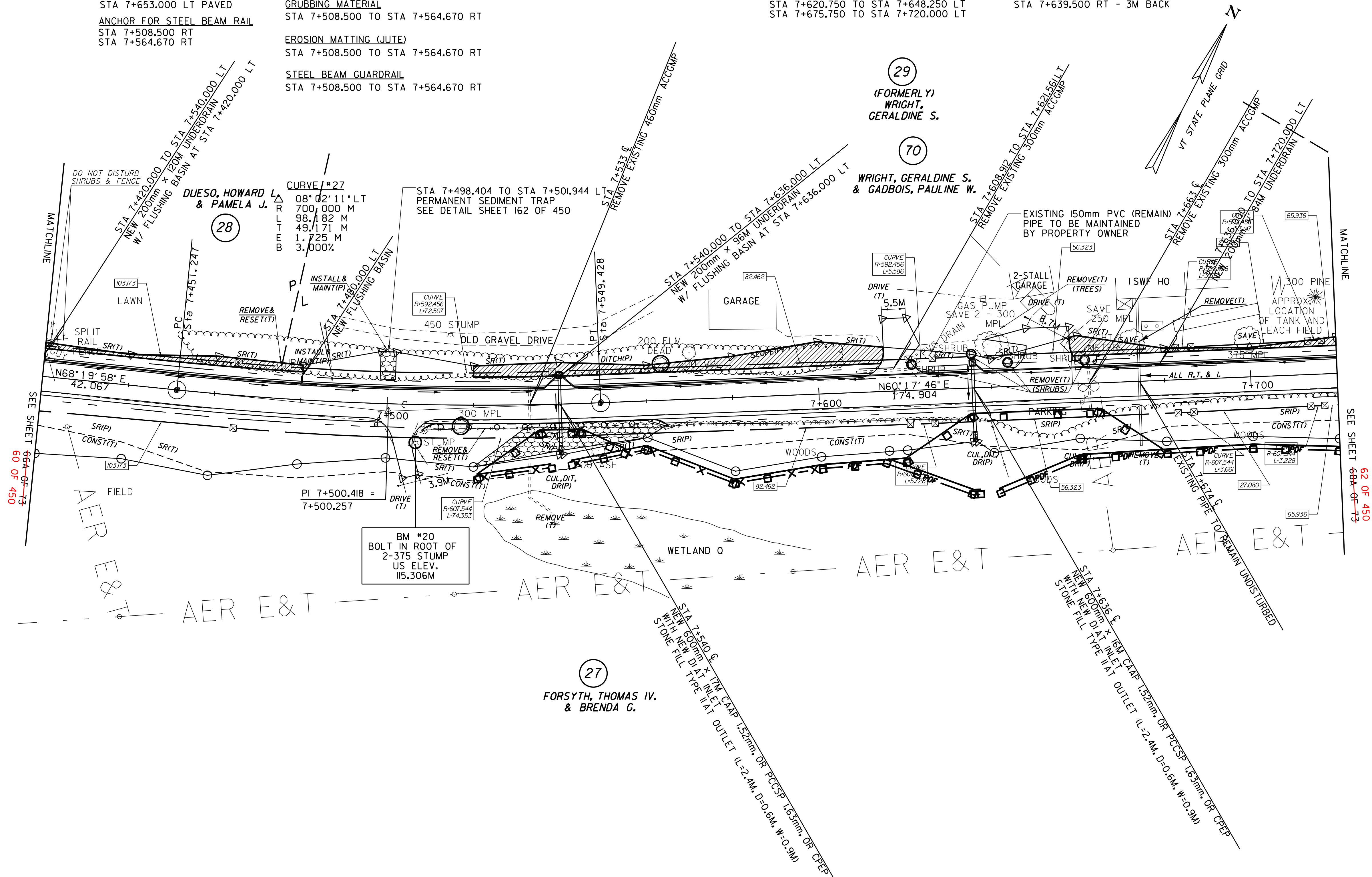
**CONSTRUCT DRIVE**  
 STA 7+504.000 RT GRAVEL  
 STA 7+618.000 LT PAVED  
 STA 7+653.000 LT PAVED  
**ANCHOR FOR STEEL BEAM RAIL**  
 STA 7+508.500 RT  
 STA 7+564.670 RT

**STONE FILL, TYPE II**  
 STA 7+508.500 TO STA 7+564.670 RT  
**GRUBBING MATERIAL**  
 STA 7+508.500 TO STA 7+564.670 RT  
**EROSION MATTING (JUTE)**  
 STA 7+508.500 TO STA 7+564.670 RT  
**STEEL BEAM GUARDRAIL**  
 STA 7+508.500 TO STA 7+564.670 RT

**RELOCATE MAIL BOX, SINGLE SUPPORT**  
 STA 7+508.211 RT  
 STA 7+661.000 RT TO STA 7+644.030 LT

**CONSTRUCT SPECIAL DITCH**  
 STA 7+420.000 TO STA 7+496.500 LT  
 STA 7+503.500 TO STA 7+615.250 LT  
 STA 7+620.750 TO STA 7+648.250 LT  
 STA 7+675.750 TO STA 7+720.000 LT

**REMOVING AND RESETTING FENCE**  
 STA 7+506.250 TO STA 7+639.500 RT  
 STA 7+506.250 RT - 9M BACK  
 STA 7+639.500 RT - 3M BACK



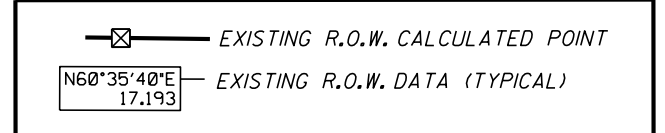
SEE SHEET 66A-OF-73  
60 OF 450

SEE SHEET 68A-OF-73  
62 OF 450



○ DENOTES TREE OR STUMP REMOVAL

- NOTES:**
- ALL SIDE ROAD RADII SHALL BE 11M UNLESS OTHERWISE NOTED. REFER TO STD B-12M
  - ALL DRIVE RADII SHALL BE 6M UNLESS OTHERWISE NOTED. REFER TO STD B-71M



LINES SHOWN ON THIS PLAN AS EXISTING PROPERTY LINES P/L ARE BELIEVED TO BE ACCURATE BUT SHOULD NOT BE RELIED UPON FOR PURPOSES UNRELATED TO THE STATE OF VERMONT'S ACQUISITION OF LAND AND RIGHTS FOR THIS PROJECT.

**FOR R.O.W. USE ONLY**

SEE LAYOUT SHEETS FOR CONSTRUCTION CHANGES

(R.O.W. AS BUILT)

PROJECT NAME:	HIGHGATE-FRANKLIN (AS BUILT)
PROJECT NUMBER:	STP RS 0301(I) SA
FILE NAME:	NAME\$DGN
PROJECT LEADER:	DELLASANTA
DESIGNED BY:	SQUAD B
ROW LAYOUT SHEET	26A-OF-26 67 OF 73
PLOT DATE:	12-FEB-2014 11:47
DRAWN BY:	N. GARBACH-ROW
CHECKED BY:	H. PETROVS
SHEET	61-67A OF 73-450