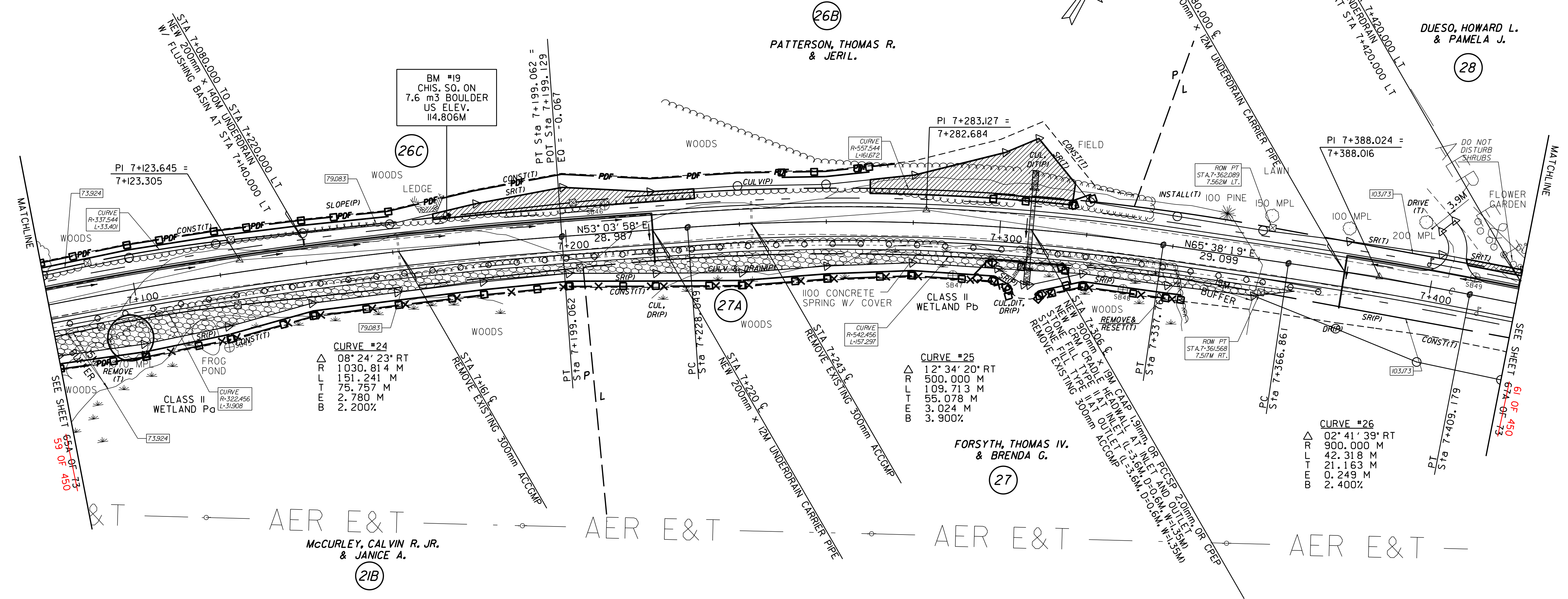


STEEL BEAM GUARDRAIL
 STA 7+080.000 TO STA 7+360.000 RT
MANUFACTURED TERMINAL SECTION (TANGENTIAL)
 STA 7+360.000 TO STA 7+375.243 RT
STONE FILL TYPE II
 STA 7+080.000 TO STA 7+375.243 RT

GRUBBING MATERIAL
 STA 7+080.000 TO STA 7+375.243 RT
EROSION MATTING (JUTE)
 STA 7+080.000 TO STA 7+375.243 RT
CONSTRUCT DRIVE
 STA 7+405.000 LT PAVED

RELOCATE MAIL BOX, SINGLE SUPPORT
 STA 7+411.500 RT TO STA 7+398.780 LT
REMOVING AND RESETTING FENCE
 STA 7+341.210 RT - 4.9M BACK
STONE FILL TYPE I
 STA 6+800.000 TO STA 6+850.000 LT

CONSTRUCT SPECIAL DITCH
 STA 7+170.000 TO STA 7+230.000 LT
 STA 7+270.000 TO STA 7+310.000 LT
 STA 7+370.000 TO STA 7+400.000 LT
 STA 7+410.000 TO STA 7+420.000 LT



PI 7+123.645 = 7+123.305
 CURVE #24
 08° 24' 23" RT
 1030.814 M
 151.241 M
 75.757 M
 2.780 M
 2.200%

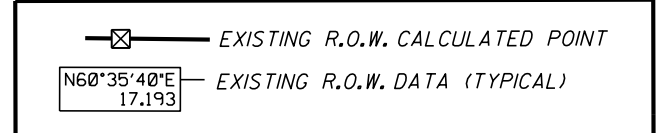
CURVE #25
 12° 34' 20" RT
 500.000 M
 109.713 M
 55.078 M
 3.024 M
 3.900%

CURVE #26
 02° 41' 39" RT
 900.000 M
 42.318 M
 21.163 M
 0.249 M
 2.400%



○ DENOTES TREE OR STUMP REMOVAL

- NOTES:**
- ALL SIDE ROAD RADII SHALL BE 11M UNLESS OTHERWISE NOTED. REFER TO STD B-12M
 - ALL DRIVE RADII SHALL BE 6M UNLESS OTHERWISE NOTED. REFER TO STD B-7M



LINES SHOWN ON THIS PLAN AS EXISTING PROPERTY LINES P/L ARE BELIEVED TO BE ACCURATE BUT SHOULD NOT BE RELIED UPON FOR PURPOSES UNRELATED TO THE STATE OF VERMONT'S ACQUISITION OF LAND AND RIGHTS FOR THIS PROJECT.

FOR R.O.W. USE ONLY

SEE LAYOUT SHEETS FOR CONSTRUCTION CHANGES

(R.O.W. AS BUILT)

PROJECT NAME:	HIGHGATE-FRANKLIN (AS BUILT)
PROJECT NUMBER:	STP RS 0301(I) SA
FILE NAME:	NAME\$DGN
PROJECT LEADER:	DELLASANTA
DESIGNED BY:	SQUAD B
ROW LAYOUT SHEET	19A OF 26 66 OF 73
PLOT DATE:	12-FEB-2014 11:47
DRAWN BY:	N. GARBACH ROW
CHECKED BY:	H. PETROVS
SHEET	6066A OF 73 450