

**MANUFACTURED TERMINAL SECTION (TANGENTIAL)**  
 STA 6+885.920 TO STA 6+901.097 RT

**STEEL BEAM GUARDRAIL**  
 STA 6+901.097 TO STA 7+080.000 RT

**CONSTRUCT DRIVE**  
 STA 6+774.000 LT GRAVEL  
 STA 6+790.000 RT GRAVEL  
 STA 6+810.000 RT GRAVEL  
 STA 6+830.000 RT GRAVEL  
 STA 6+840.000 LT GRAVEL  
 STA 7+030.000 LT GRAVEL  
 STA 7+053.000 LT GRAVEL

**RELOCATE MAIL BOX, SINGLE SUPPORT**  
 STA 6+778.020 RT  
 STA 6+804.700 RT

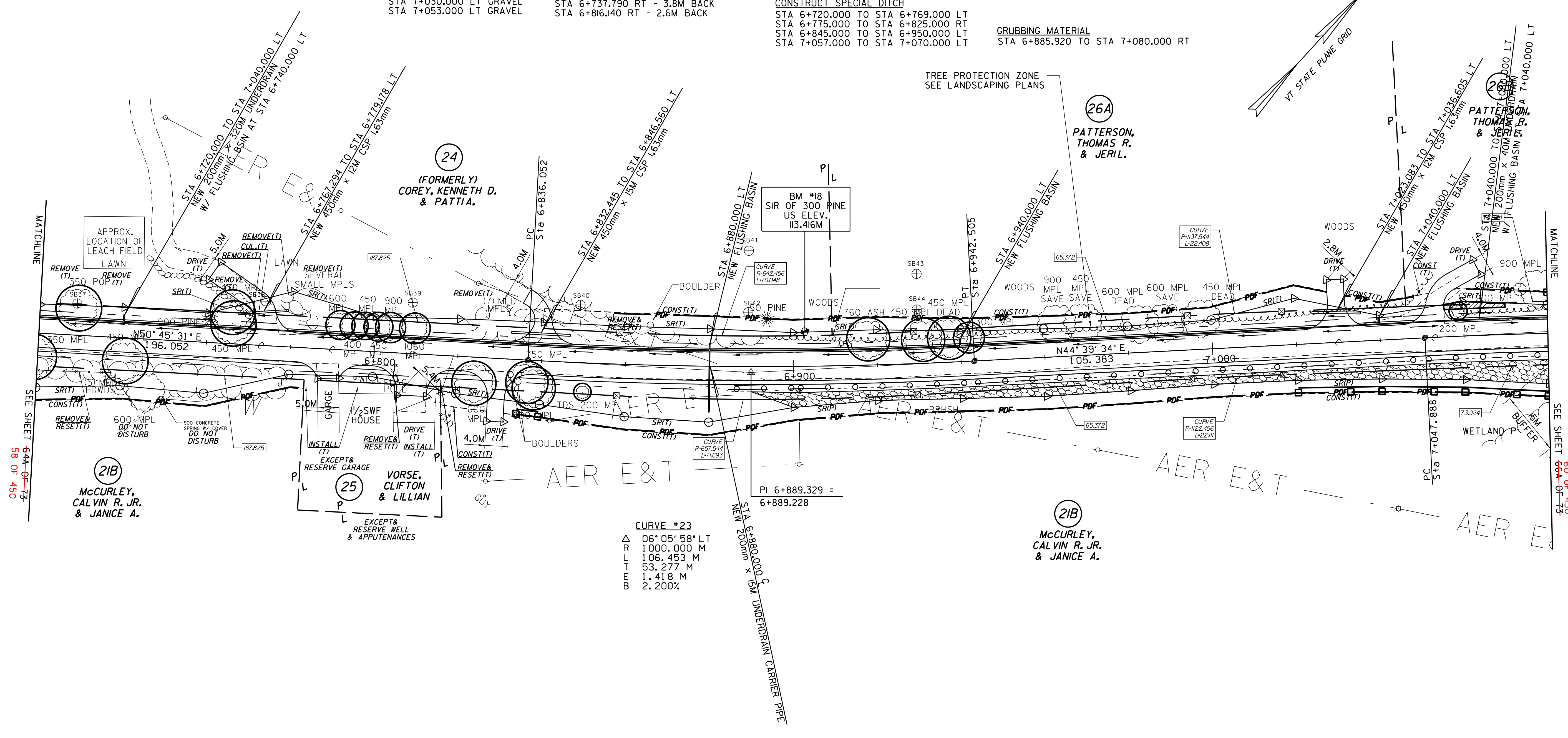
**REMOVING AND RESETTING FENCE**  
 STA 6+720.000 TO STA 6+737.790 RT  
 STA 6+737.790 RT - 3.8M BACK  
 STA 6+816.140 RT - 2.6M BACK

**CONSTRUCT SPECIAL DITCH**  
 STA 6+720.000 TO STA 6+769.000 LT  
 STA 6+775.000 TO STA 6+825.000 RT  
 STA 6+845.000 TO STA 6+950.000 LT  
 STA 7+057.000 TO STA 7+070.000 LT

**STONE FILL, TYPE II**  
 STA 6+885.920 TO STA 7+080.000 RT

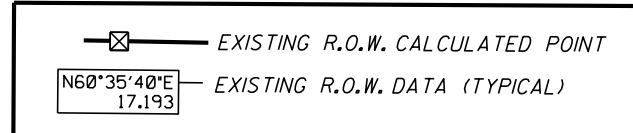
**EROSION MATTING (JUTE)**  
 STA 6+885.920 TO STA 7+080.000 RT

**GRUBBING MATERIAL**  
 STA 6+885.920 TO STA 7+080.000 RT



○ DENOTES TREE OR STUMP REMOVAL

- NOTES:**
- ALL SIDE ROAD RADII SHALL BE 11M UNLESS OTHERWISE NOTED. REFER TO STD B-12M
  - ALL DRIVE RADII SHALL BE 6M UNLESS OTHERWISE NOTED. REFER TO STD B-7M



LINES SHOWN ON THIS PLAN AS EXISTING PROPERTY LINES P/L ARE BELIEVED TO BE ACCURATE BUT SHOULD NOT BE RELIED UPON FOR PURPOSES UNRELATED TO THE STATE OF VERMONT'S ACQUISITION OF LAND AND RIGHTS FOR THIS PROJECT.

**FOR R.O.W. USE ONLY**

SEE LAYOUT SHEETS FOR CONSTRUCTION CHANGES

(R.O.W. AS BUILT)

PROJECT NAME:	HIGHGATE-FRANKLIN (AS BUILT)
PROJECT NUMBER:	STP RS 0301(I) SA
FILE NAME:	NAME\$DGN
PROJECT LEADER:	DELLASANTA
DESIGNED BY:	SQUAD B
ROW LAYOUT SHEET:	18A-OF-26-65 OF 73
PLOT DATE:	12-FEB-2014 11:47
DRAWN BY:	N. GARBACH
CHECKED BY:	H. PETROVS
SHEET:	5965A OF 73 450