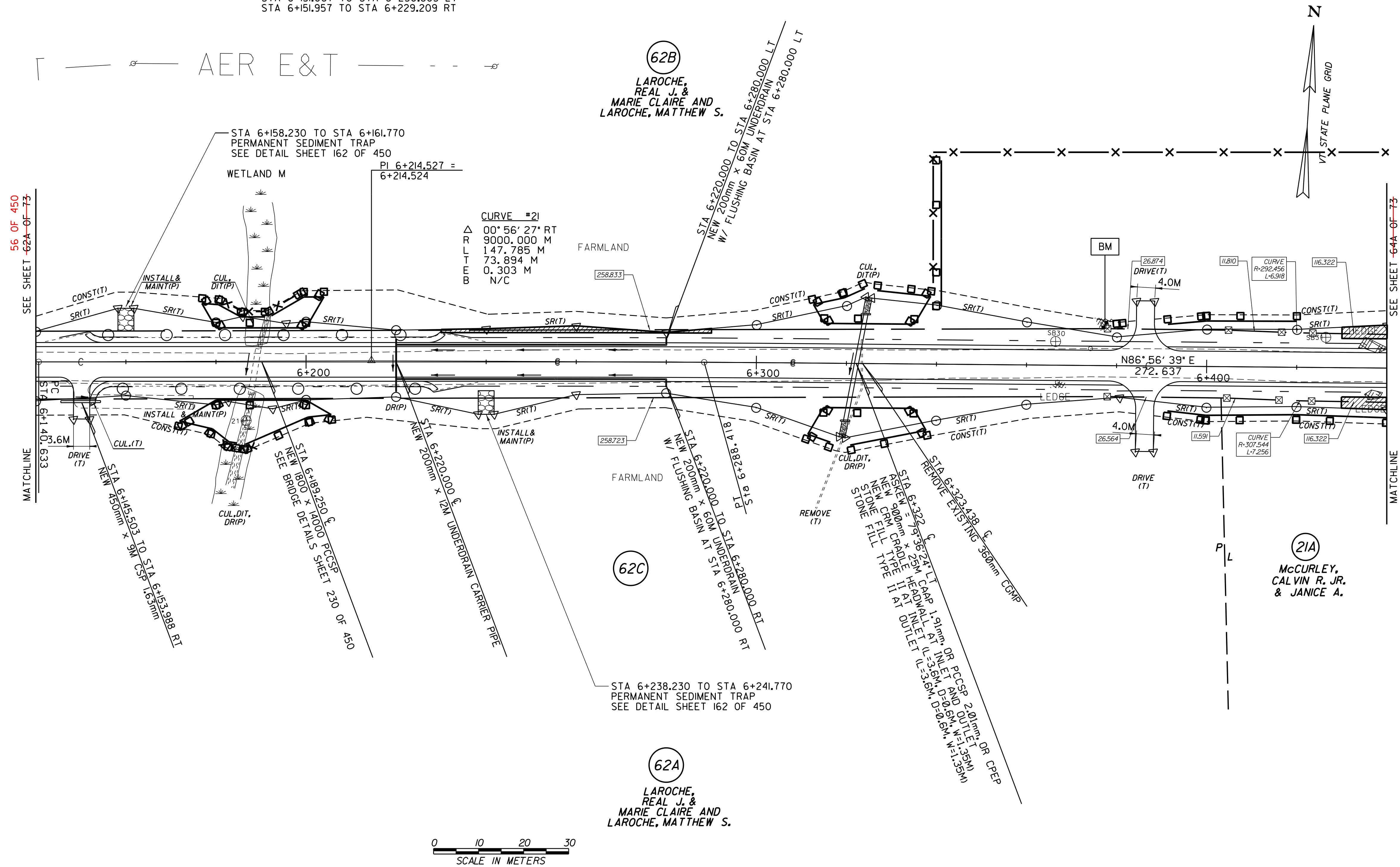


CONSTRUCT DRIVE
 STA 6+150.000 RT GRAVEL
 STA 6+386.000 LT GRAVEL
 STA 6+386.000 RT GRAVEL

ANCHOR FOR STEEL BEAM RAIL
 STA 6+151.067 LT
 STA 6+151.957 RT
 STA 6+229.209 RT
 STA 6+230.803 LT

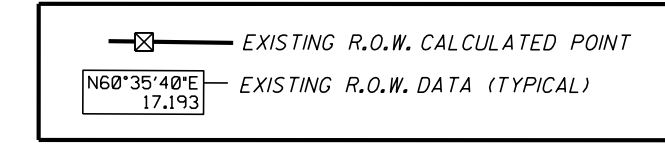
CONSTRUCT SPECIAL DITCH
 STA 6+161.770 TO STA 6+280.000 LT
 STA 6+160.000 TO STA 6+270.000 RT
 STA 6+370.000 TO STA 6+380.000 RT
 STA 6+430.000 TO STA 6+440.000 LT
 STA 6+430.000 TO STA 6+440.000 RT

STEEL BEAM GUARDRAIL
 STA 6+151.067 TO STA 6+230.803 LT
 STA 6+151.957 TO STA 6+229.209 RT



○ DENOTES TREE OR STUMP REMOVAL

- NOTES:**
1. ALL SIDE ROAD RADII SHALL BE 11M UNLESS OTHERWISE NOTED. REFER TO STD B-12M
 2. ALL DRIVE RADII SHALL BE 6M UNLESS OTHERWISE NOTED. REFER TO STD B-7M



LINES SHOWN ON THIS PLAN AS EXISTING PROPERTY LINES P/L ARE BELIEVED TO BE ACCURATE BUT SHOULD NOT BE RELIED UPON FOR PURPOSES UNRELATED TO THE STATE OF VERMONT'S ACQUISITION OF LAND AND RIGHTS FOR THIS PROJECT.

FOR R.O.W. USE ONLY

SEE LAYOUT SHEETS FOR CONSTRUCTION CHANGES
 (R.O.W. AS BUILT)

PROJECT NAME:	HIGHGATE-FRANKLIN (AS BUILT)
PROJECT NUMBER:	STP RS 0301(I) SA
FILE NAME:	NAME\$DGN
PROJECT LEADER:	DELLASANTA
DESIGNED BY:	SQUAD B
ROW LAYOUT SHEET:	16A OF 26 63 OF 73
PLOT DATE:	12-FEB-2014 11:47
DRAWN BY:	N. GARBACH ROW
CHECKED BY:	H. PETROVS
SHEET:	57 63A OF 73 450