

**STEEL BEAM GUARDRAIL**  
 STA 4+480.000 TO STA 4+498.788 LT  
 STA 4+488.749 TO STA 4+496.130 RT

**CONSTRUCT DRIVE**  
 STA 4+637.000 LT GRAVEL  
 STA 4+639.000 RT GRAVEL

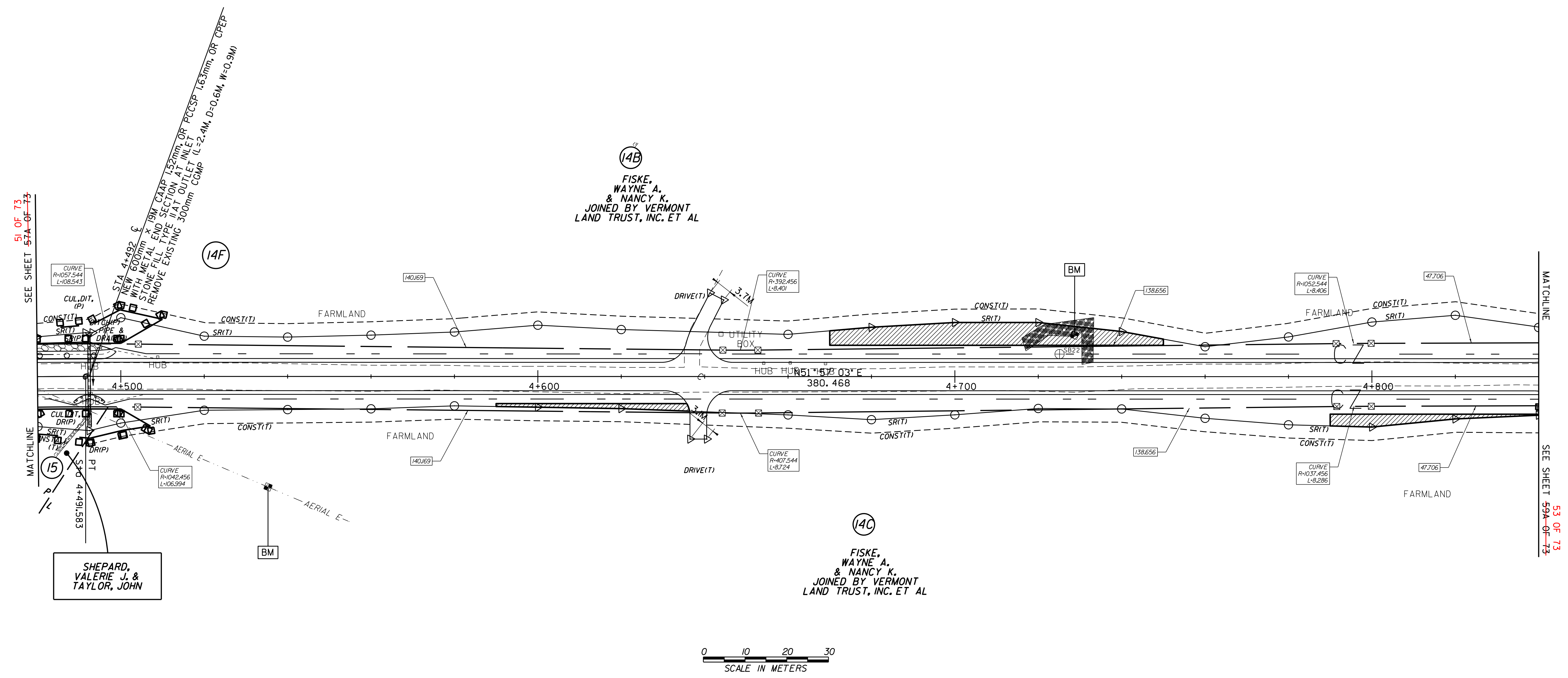
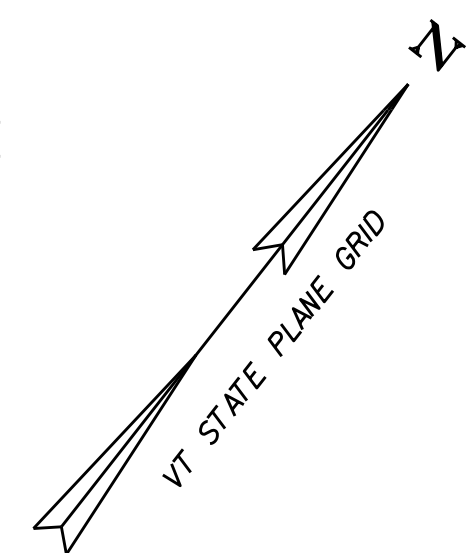
**ANCHOR FOR STEEL BEAM RAIL**  
 STA 4+488.749 RT  
 STA 4+496.130 RT  
 STA 4+498.788 LT

**CONSTRUCT SPECIAL DITCH**  
 STA 4+491.500 TO STA 4+492.500 RT  
 STA 4+670.000 TO STA 4+750.000 LT  
 STA 4+790.000 TO STA 4+820.000 RT

**STONE FILL TYPE II**  
 STA 4+480.000 TO STA 4+495.150 LT

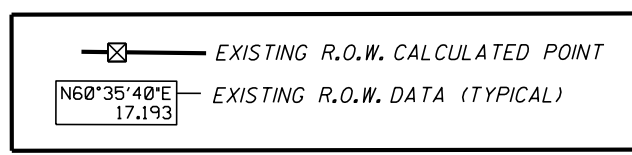
**EROSION MATING (JUTE)**  
 STA 4+480.000 TO STA 4+495.150 LT

**GRUBBING MATERIAL**  
 STA 4+480.000 TO STA 4+495.150 LT



○ DENOTES TREE OR STUMP REMOVAL

- NOTES:**
1. ALL SIDE ROAD RADII SHALL BE 11M UNLESS OTHERWISE NOTED. REFER TO STD B-12M
  2. ALL DRIVE RADII SHALL BE 6M UNLESS OTHERWISE NOTED. REFER TO STD B-71M



LINES SHOWN ON THIS PLAN AS EXISTING PROPERTY LINES P/L ARE BELIEVED TO BE ACCURATE BUT SHOULD NOT BE RELIED UPON FOR PURPOSES UNRELATED TO THE STATE OF VERMONT'S ACQUISITION OF LAND AND RIGHTS FOR THIS PROJECT.

**FOR R.O.W. USE ONLY**

SEE LAYOUT SHEETS FOR CONSTRUCTION CHANGES

(R.O.W. AS BUILT)

PROJECT NAME:	HIGHGATE-FRANKLIN (AS BUILT)
PROJECT NUMBER:	STP RS 0301(I) SA
FILE NAME:	NAME\$DGN
PROJECT LEADER:	DELLASANTA
DESIGNED BY:	SQUAD B
ROW LAYOUT SHEET #:	26 58 OF 73
PLOT DATE:	12-FEB-2014 11:47
DRAWN BY:	N. GARBACH-RON
CHECKED BY:	H. PETROVS
SHEET #:	52 58A OF 73 450