

CONSTRUCT DRIVE
 STA 4+125.000 RT GRAVEL
 STA 4+255.000 LT GRAVEL
 STA 4+275.000 LT GRAVEL
 STA 4+297.000 RT GRAVEL
 STA 4+390.000 LT GRAVEL
 STA 4+417.000 RT GRAVEL

STEEL BEAM GUARDRAIL
 STA 4+476.314 TO STA 4+480.000 LT

RELOCATE MAIL BOX, SINGLE SUPPORT
 STA 4+305.000 LT
 STA 4+421.000 LT

ANCHOR FOR STEEL BEAM RAIL
 STA 4+476.314 LT

STONE FILL TYPE II
 STA 4+477.320 TO STA 4+480.000 LT

GRUBBING MATERIAL
 STA 4+477.320 TO STA 4+480.000 LT

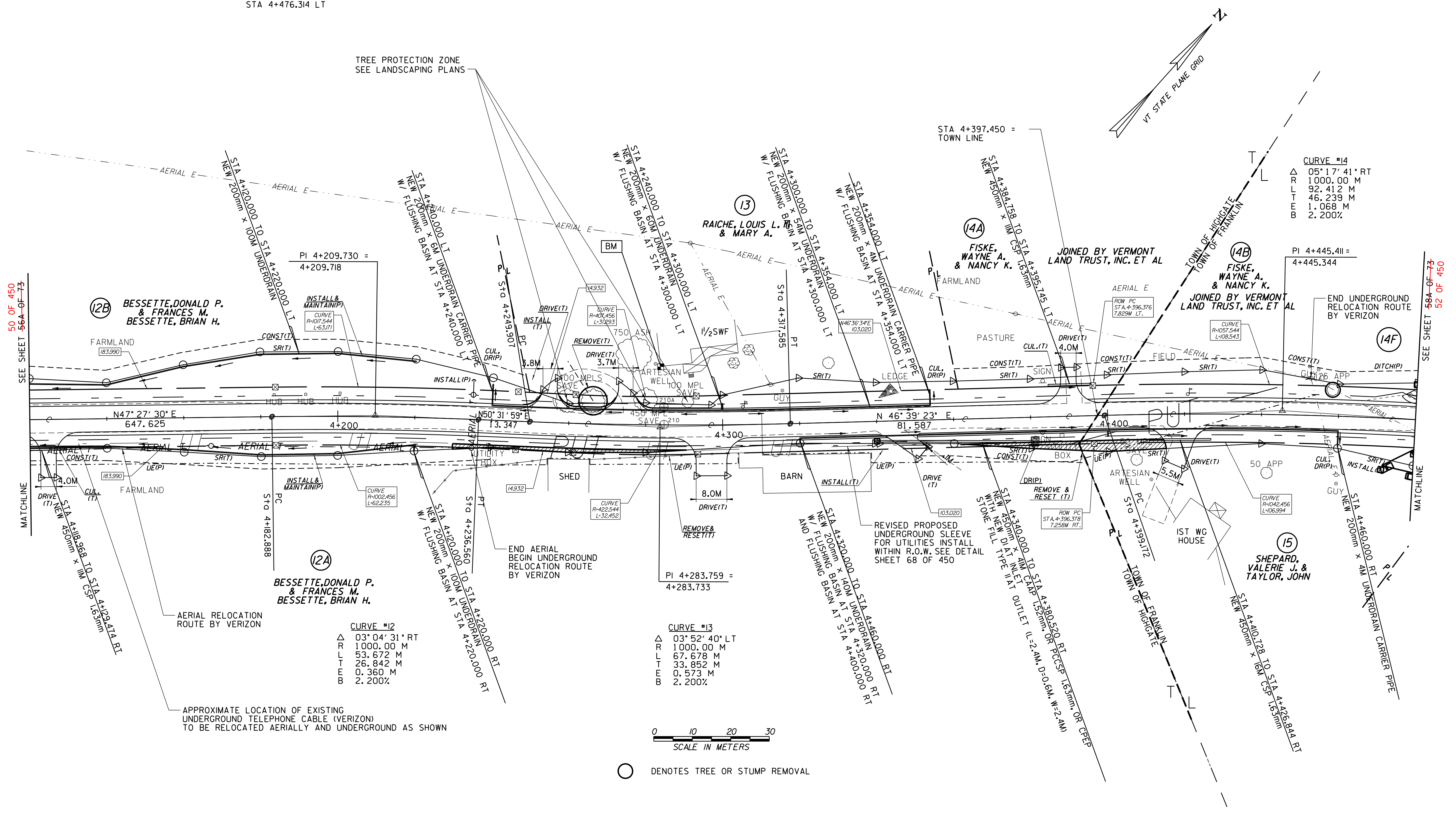
EROSION MATTING (JUTE)
 STA 4+477.320 TO STA 4+480.000 LT

REMOVING AND RESETTING FENCE
 STA 4+392.000 RT - 3M BACK

CONSTRUCT SPECIAL DITCH
 STA 4+230.000 TO STA 4+293.000 RT
 STA 4+290.000 TO STA 4+385.500 LT
 STA 4+394.500 TO STA 4+470.000 LT

VERTICAL GRANITE CURB
 STA 4+247.960 TO STA 4+253.040 LT
 STA 4+256.810 TO STA 4+272.830 LT
 STA 4+276.590 TO STA 4+297.000 LT

SLEEVES FOR UTILITIES (115 mm DIAMETER)(MOD)
 STA 4+235.000 RT TO STA 4+455.000 LT



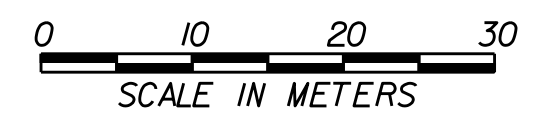
50 OF 450
SEE SHEET 56A OF 73

52 OF 450
SEE SHEET 56A OF 73

CURVE #12
 Δ 03° 04' 31" RT
 R 1000.00 M
 L 53.672 M
 T 26.842 M
 E 0.360 M
 B 2.200%

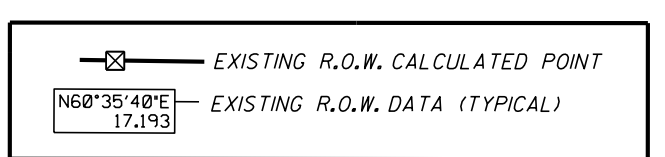
CURVE #13
 Δ 03° 52' 40" LT
 R 1000.00 M
 L 67.678 M
 T 33.852 M
 E 0.573 M
 B 2.200%

CURVE #14
 Δ 05° 17' 41" RT
 R 1000.00 M
 L 92.412 M
 T 46.239 M
 E 1.068 M
 B 2.200%



○ DENOTES TREE OR STUMP REMOVAL

- NOTES:**
- ALL SIDE ROAD RADII SHALL BE 1M UNLESS OTHERWISE NOTED. REFER TO STD B-12M
 - ALL DRIVE RADII SHALL BE 6M UNLESS OTHERWISE NOTED. REFER TO STD B-71M



LINES SHOWN ON THIS PLAN AS EXISTING PROPERTY LINES P/L ARE BELIEVED TO BE ACCURATE BUT SHOULD NOT BE RELIED UPON FOR PURPOSES UNRELATED TO THE STATE OF VERMONT'S ACQUISITION OF LAND AND RIGHTS FOR THIS PROJECT.

FOR R.O.W. USE ONLY

SEE LAYOUT SHEETS FOR CONSTRUCTION CHANGES

(R.O.W. AS BUILT)

PROJECT NAME:	HIGHGATE-FRANKLIN (AS BUILT)
PROJECT NUMBER:	STP RS 0301(I) SA
FILE NAME:	NAME\$DGN
PROJECT LEADER:	DELLASANTA
DESIGNED BY:	SQUAD B
ROW LAYOUT SHEET	10A OF 26-57 OF 73
PLOT DATE:	12-FEB-2014 11:47
DRAWN BY:	N. GARBACH-ROW
CHECKED BY:	H. PETROVS
SHEET	51 57A OF 73-450