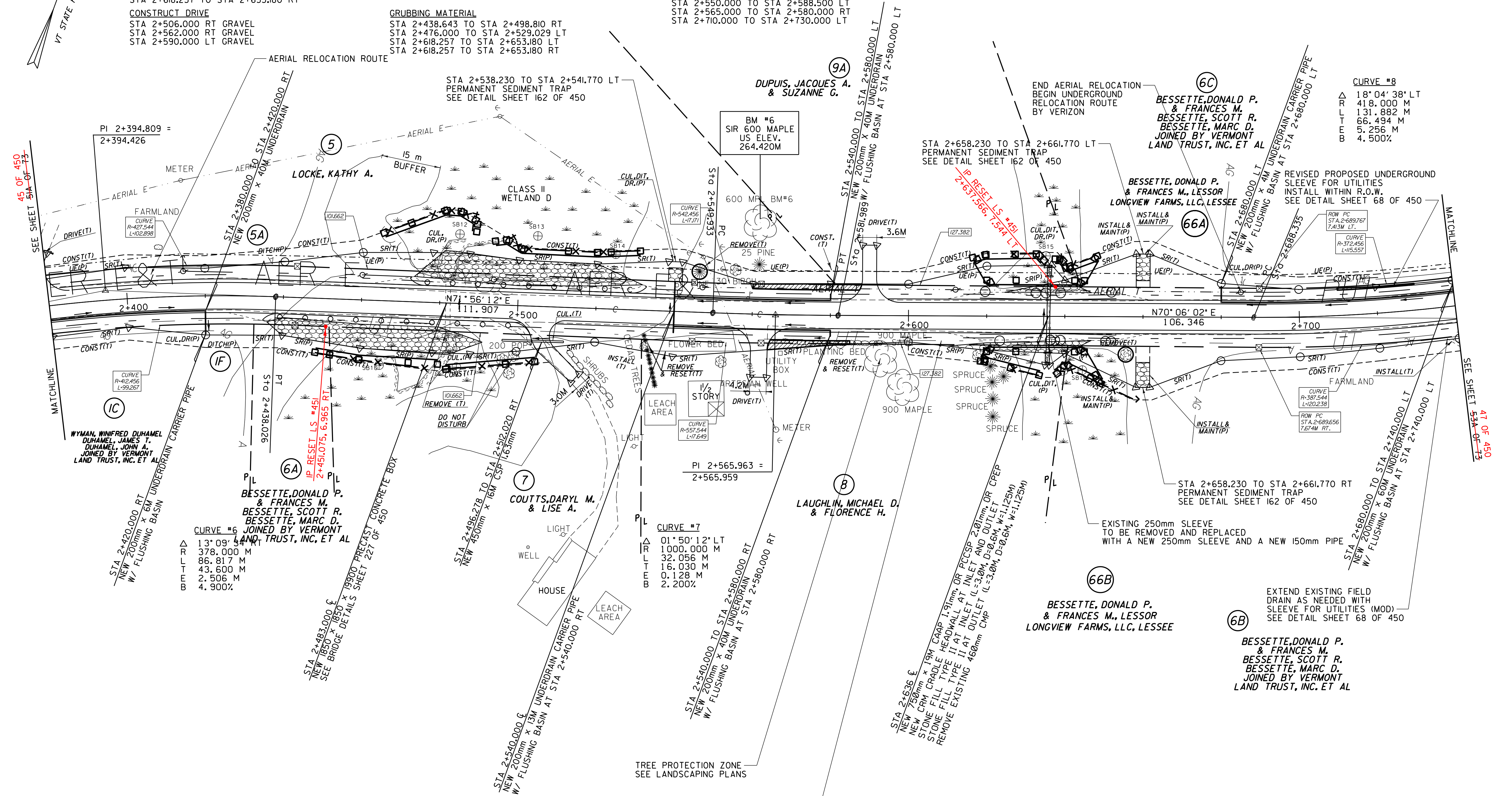
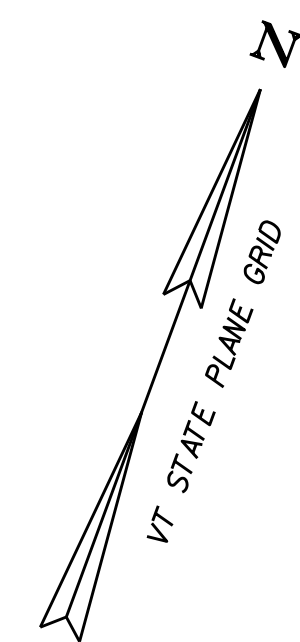


STEEL BEAM GUARDRAIL
 STA 2+434.922 TO STA 2+503.821 RT
 STA 2+472.326 TO STA 2+532.701 LT
 STA 2+633.813 TO STA 2+637.623 LT
 STA 2+633.813 TO STA 2+637.623 RT
STONE FILL, TYPE II
 STA 2+438.643 TO STA 2+498.810 RT
 STA 2+476.000 TO STA 2+529.029 LT
 STA 2+618.257 TO STA 2+653.180 LT
 STA 2+618.257 TO STA 2+653.180 RT
CONSTRUCT DRIVE
 STA 2+506.000 RT GRAVEL
 STA 2+562.000 RT GRAVEL
 STA 2+590.000 LT GRAVEL

MANUFACTURED TERMINAL SECTION (TANGENTIAL)
 STA 2+438.643 TO STA 2+633.813 LT
 STA 2+637.623 TO STA 2+653.189 LT
 STA 2+618.247 TO STA 2+653.813 RT
 STA 2+637.623 TO STA 2+653.189 RT
RELOCATE MAIL BOX, SINGLE SUPPORT
 STA 2+558.830 LT
GRUBBING MATERIAL
 STA 2+438.643 TO STA 2+498.810 RT
 STA 2+476.000 TO STA 2+529.029 LT
 STA 2+618.257 TO STA 2+653.180 LT
 STA 2+618.257 TO STA 2+653.180 RT

EROSION MATTING (JUTE)
 STA 2+438.643 TO STA 2+498.810 RT
 STA 2+476.000 TO STA 2+529.029 LT
 STA 2+618.257 TO STA 2+653.180 LT
 STA 2+618.257 TO STA 2+653.180 RT
CONSTRUCT SPECIAL DITCH
 STA 2+380.000 TO STA 2+410.000 RT
 STA 2+536.000 TO STA 2+558.000 RT
 STA 2+550.000 TO STA 2+588.500 LT
 STA 2+565.000 TO STA 2+580.000 RT
 STA 2+710.000 TO STA 2+730.000 LT

ANCHOR FOR STEEL BEAM RAIL
 STA 2+434.922 RT
 STA 2+472.326 LT
 STA 2+503.821 RT
 STA 2+532.701 LT
SLEEVES FOR UTILITIES (115 mm DIAMETER)(MOD)
 STA 2+700.000 TO STA 2+740.000 LT



CURVE #8
 Δ 18° 04' 38" LT
 R 418.000 M
 L 131.882 M
 T 66.494 M
 E 5.256 M
 B 4.500%

CURVE #6
 Δ 13° 09' 54" RT
 R 378.000 M
 L 86.817 M
 T 43.600 M
 E 2.506 M
 B 4.900%

CURVE #7
 Δ 01° 50' 12" LT
 R 1000.000 M
 L 32.056 M
 T 16.030 M
 E 0.128 M
 B 2.200%

CURVE #5
 Δ 18° 04' 38" LT
 R 418.000 M
 L 131.882 M
 T 66.494 M
 E 5.256 M
 B 4.500%

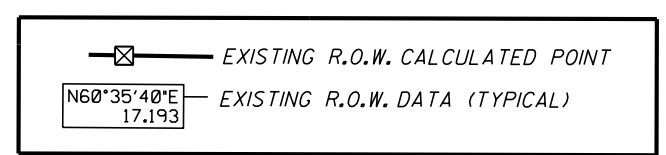
LINES SHOWN ON THIS PLAN AS EXISTING PROPERTY LINES P/L ARE BELIEVED TO BE ACCURATE BUT SHOULD NOT BE RELIED UPON FOR PURPOSES UNRELATED TO THE STATE OF VERMONT'S ACQUISITION OF LAND AND RIGHTS FOR THIS PROJECT.

FOR R.O.W. USE ONLY



○ DENOTES TREE OR STUMP REMOVAL

- NOTES:**
- ALL SIDE ROAD RADII SHALL BE 11M UNLESS OTHERWISE NOTED, REFER TO STD B-12M
 - ALL DRIVE RADII SHALL BE 6M UNLESS OTHERWISE NOTED, REFER TO STD B-71M



SEE LAYOUT SHEETS FOR CONSTRUCTION CHANGES

(R.O.W. AS BUILT)

PROJECT NAME:	HIGHGATE-FRANKLIN (AS BUILT)	PLOT DATE:	12-FEB-2014 11:47
PROJECT NUMBER:	STP RS 0301(I) SA	PROJECT LEADER:	N. GARBACH-ROW
FILE NAME:	NAME\$DGN	DESIGNED BY:	SQUAD B
DESIGNED BY:	SQUAD B	CHECKED BY:	H. PETROVS
ROW LAYOUT SHEET	5A OF 26 52 OF 73	SHEET	46-52A OF 73-450