

CONSTRUCT DRIVE
 STA I+344.000 LT GRAVEL
 STA I+414.000 RT GRAVEL
 STA I+428.000 RT GRAVEL
 STA I+484.000 LT GRAVEL
 STA I+498.000 RT GRAVEL
 STA I+564.000 LT GRAVEL

STEEL BEAM GUARDRAIL
 STA I+553.949 TO STA I+627.842 RT
 STA I+617.592 TO STA I+660.000 LT

RELOCATE MAIL BOX, SINGLE SUPPORT
 STA I+437.910 LT
 STA I+494.660 LT

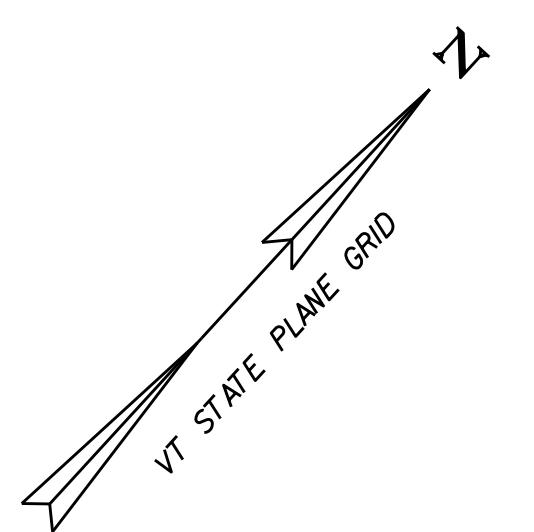
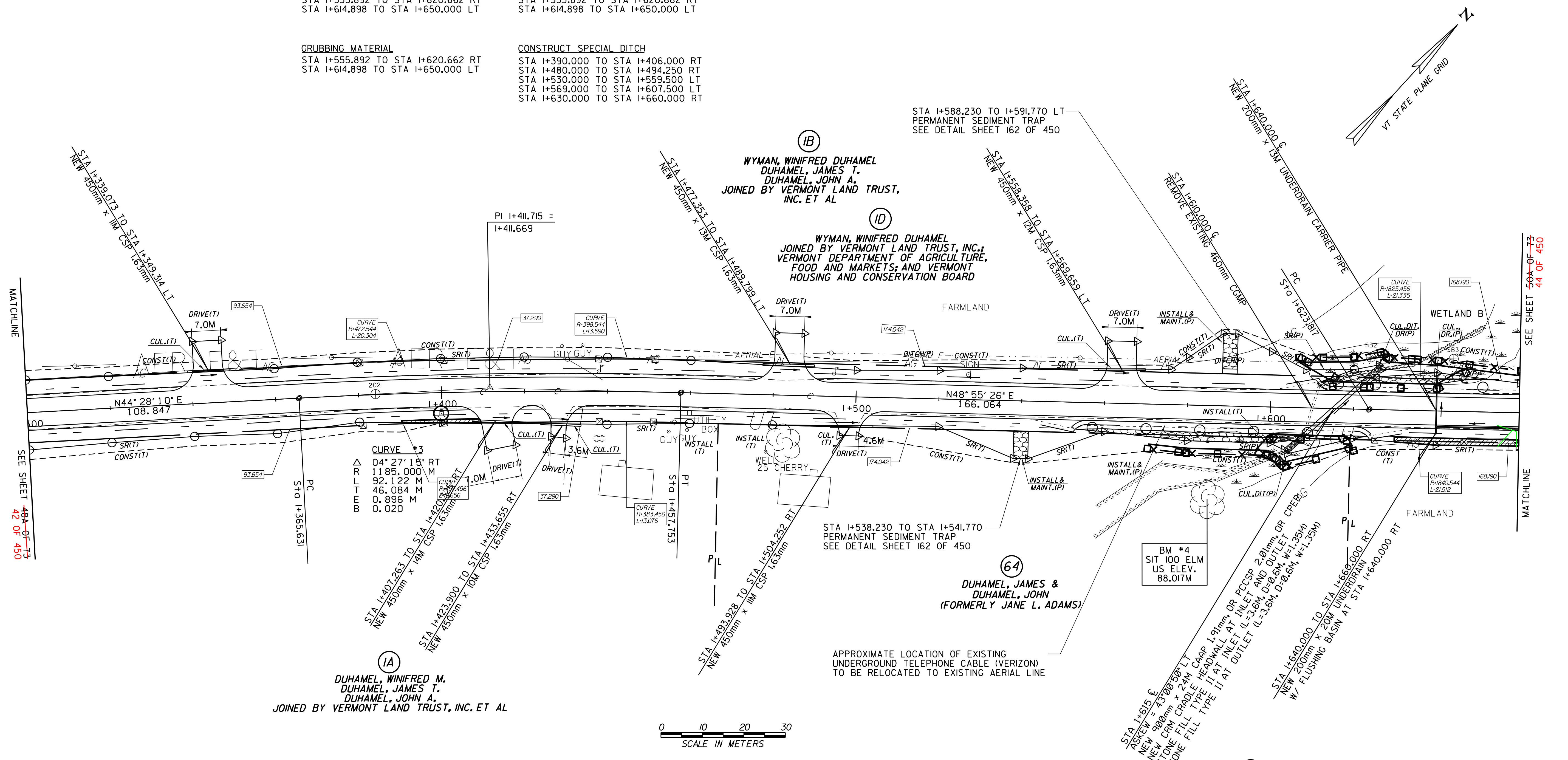
ANCHOR FOR STEEL BEAM RAIL
 STA I+553.949 RT
 STA I+617.592 LT
 STA I+627.842 RT

STONE FILL, TYPE II
 STA I+555.892 TO STA I+620.662 RT
 STA I+614.898 TO STA I+650.000 LT

EROSION MATTING (GULCH)
 STA I+555.892 TO STA I+620.662 RT
 STA I+614.898 TO STA I+650.000 LT

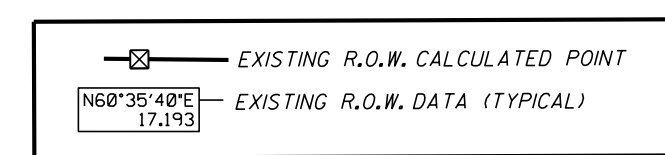
GRUBBING MATERIAL
 STA I+555.892 TO STA I+620.662 RT
 STA I+614.898 TO STA I+650.000 LT

CONSTRUCT SPECIAL DITCH
 STA I+390.000 TO STA I+406.000 RT
 STA I+480.000 TO STA I+494.250 RT
 STA I+530.000 TO STA I+559.500 LT
 STA I+569.000 TO STA I+607.500 LT
 STA I+630.000 TO STA I+660.000 RT



○ DENOTES TREE OR STUMP REMOVAL

- NOTES:**
1. ALL SIDE ROAD RADII SHALL BE IIM UNLESS OTHERWISE NOTED. REFER TO STD B-12M
 2. ALL DRIVE RADII SHALL BE 6M UNLESS OTHERWISE NOTED. REFER TO STD B-7IM



LINES SHOWN ON THIS PLAN AS EXISTING PROPERTY LINES P/L ARE BELIEVED TO BE ACCURATE BUT SHOULD NOT BE RELIED UPON FOR PURPOSES UNRELATED TO THE STATE OF VERMONT'S ACQUISITION OF LAND AND RIGHTS FOR THIS PROJECT.

FOR R.O.W. USE ONLY

SEE LAYOUT SHEETS FOR CONSTRUCTION CHANGES

(R.O.W. AS BUILT)

PROJECT NAME:	HIGHGATE-FRANKLIN (AS BUILT)
PROJECT NUMBER:	STP RS 0301(I) SA
FILE NAME:	NAME\$DGN
PROJECT LEADER:	DELLASANTA
DESIGNED BY:	SQUAD B
ROW LAYOUT SHEET	2A OF 26 49 OF 73
PLOT DATE:	12-FEB-2014 11:46
CHECKED BY:	H. PETROVS
SHEET	43 49A OF 73 450