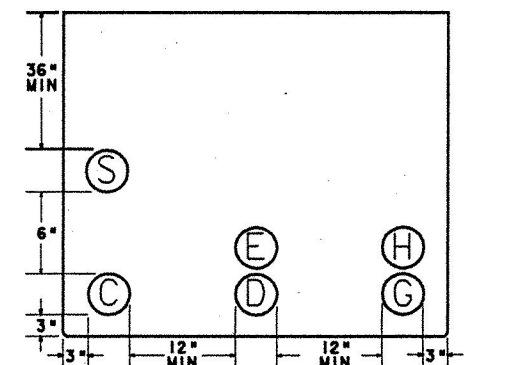


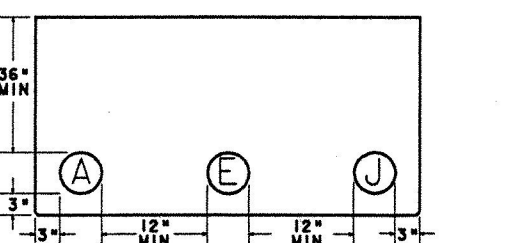
DUCT BANK SECTION 5 NOT TO SCALE

DUCT BANK SECTION 6 NOT TO SCALE

DUCT BANK SECTION 7 NOT TO SCALE



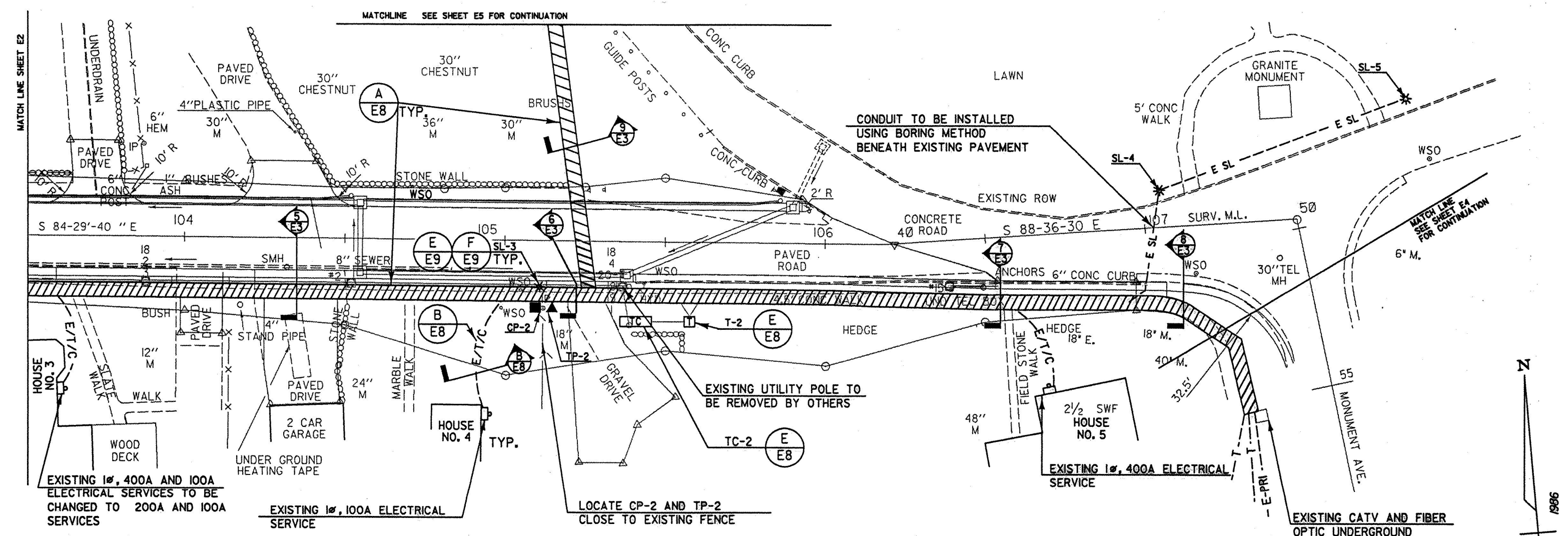
DUCT BANK SECTION 8 NOT TO SCALE



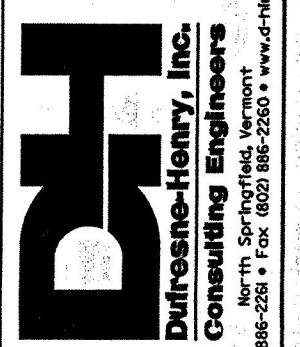
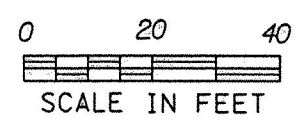
DUCT BANK SECTION 9 NOT TO SCALE

- NOTES:
- SEE RISER DIAGRAMS, SHEET E7, FOR CONDUIT/CABLE SYSTEMS.
 - ELECTRIC PRIMARY CABLES TO BE INSTALLED BY CENTRAL VERMONT PUBLIC SERVICE (CVPS).
 - TELEPHONE CABLES TO BE INSTALLED BY BELL ATLANTIC.
 - CATV AND FIBER OPTIC CABLES TO BE INSTALLED BY ADELPHIA CABLE COMMUNICATION CO. CIC CABLE IS A DIRECT BURIAL CABLE.

| DUCT BANK SCHEDULE | | | | |
|-----------------------|------------------|--|------------------------|----------------------------|
| DUCT BANK SECTION NO. | CONDUIT | FUNCTION | FROM | TO |
| 5 | A 4" | 3Ø PRIMARY ELECTRIC | TERMINAL CABINET, TC-1 | TERMINAL CABINET, TC-2 |
| | D 4" | TELEPHONE "EXPRESS" | UTILITY POLE #6 | TP-3A (EXISTING) |
| | E 4" | TELEPHONE - DISTRIBUTION | TP-1 | TP-2 |
| | G 4" | FIBER OPTIC | UTILITY POLE #7 | UNDERGROUND JUNCTION BOX |
| | H 4" | CATV | UTILITY POLE #7 | UNDERGROUND JUNCTION BOX |
| | I 4" | CATV | UTILITY POLE #6 | UNDERGROUND JUNCTION BOX |
| | J CIC CABLE S 2" | CATV - DISTRIBUTION STREET LIGHTS (CONDUIT TO CONTAIN 3#6, #6 G. CU.) | CP-1 SL-2 | CP-2 SL-3 |
| 6 | A 4" | 3Ø PRIMARY ELECTRIC | TERMINAL CABINET, TC-1 | TERMINAL CABINET, TC-2 |
| | B 3" | HOUSE SERVICE ELECTRIC | T-2 | HOUSE NO. 4 |
| | D 4" | TELEPHONE - "EXPRESS" | UTILITY POLE #6 | TP-3A (EXISTING) |
| | E1 4" | TELEPHONE - DISTRIBUTION | TP-2 | TP-3A (EXISTING) |
| | E2 4" | TELEPHONE - DISTRIBUTION | TP-2 | TP-4 |
| | F 2" | TELEPHONE - HOUSE SERVICE | TP-2 | HOUSE NO. 5 |
| | G 4" | FIBER OPTIC | UTILITY POLE #7 | UNDERGROUND JUNCTION BOX |
| | H 4" | CATV - SPARE | UTILITY POLE #7 | UNDERGROUND JUNCTION BOX |
| | I 4" | CATV | UTILITY POLE #6 | UNDERGROUND JUNCTION BOX |
| | J CIC CABLE S 2" | CATV - DISTRIBUTION CATV - HOUSE SERVICE STREET LIGHTS (CONDUIT TO CONTAIN 3#6, #6 G. CU.) | CP-2 SL-3 | CP-4 HOUSE NO.5 SL-4 |
| 7 | C 3" | 1Ø PRIMARY ELECTRIC | TERMINAL CABINET, TC-2 | T-3 |
| | B 4" | HOUSE SERVICE ELECTRIC | TP-2 | HOUSE NO. 5 |
| | D 4" | TELEPHONE - "EXPRESS" | UTILITY POLE #6 | TP-3A (EXISTING) |
| | E 4" | TELEPHONE - DISTRIBUTION | TP-2 | TP-3A (EXISTING) |
| | G 4" | FIBER OPTIC | UTILITY POLE #7 | UNDERGROUND JUNCTION BOX |
| | H 4" | CATV - SPARE | UTILITY POLE #7 | UNDERGROUND JUNCTION BOX |
| | K CIC CABLE S 2" | CATV - HOUSE SERVICE STREET LIGHTS (CONDUIT TO CONTAIN 3#6, #6 G. CU.) | CP-1 SL-3 | HOUSE NO. 5 SL-4 |
| 8 | C 3" | 1Ø PRIMARY ELECTRIC | TERMINAL CABINET, TC-2 | T-3 |
| | D 4" | TELEPHONE "EXPRESS" | UTILITY POLE #6 | TP-3A (EXISTING) |
| | E 4" | TELEPHONE - DISTRIBUTION | TP-2 | TP-3A (EXISTING) |
| | G 4" | FIBER OPTIC | UTILITY POLE #7 | UNDERGROUND JUNCTION BOX |
| | H 4" | CATV - SPARE | UTILITY POLE #7 | UNDERGROUND JUNCTION BOX |
| 9 | A 4" | 3Ø PRIMARY ELECTRIC | TERMINAL CABINET, TC-2 | TP-5 |
| | E 4" | TELEPHONE - DISTRIBUTION | TP-2 | TP-4 |
| | J CIC CABLE | CATV - SLEEVE FOR CIC CABLE (DISTRIBUTION) EXTEND CONDUIT FROM SOUTH EDGE OF CONCRETE WALK TO 6' MINIMUM BEYOND NORTH EDGE NORTH ROADWAY GUTTER. | CP-2 | CP-4 |



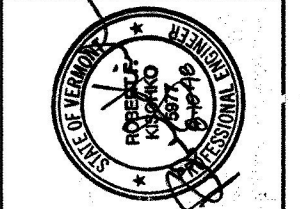
| LEGEND | |
|--------|--|
| | UTILITY POLE |
| | STREET LIGHT |
| | PAD MOUNT TRANSFORMER |
| | TELEPHONE PEDESTAL |
| | CATV PEDESTAL |
| | PRIMARY ELECTRICAL TERMINAL CABINET |
| | DUCTBANK, SEE DUCTBANK SCHEDULE FOR SIZE AND CONDUIT CONFIGURATION |
| | |
| | UNDERGROUND PVC CONDUIT FOR HOUSE SERVICE ELECTRICAL CABLES, SEE TRENCH DETAIL |
| | |
| | DIRECT BURIED CATV CABLE, INSTALLED BY ADELPHIA CABLE. |
| | TRENCH WITH PVC CONDUIT FOR HOUSE SERVICE ELECTRICAL CABLE TYP., 2\"/> |
| | |
| | ELECTRICAL SERVICE METER SOCKET, SIZE AS NOTED. |



| LAB | DATE | BY | DESCRIPTION |
|-----|-----------|----|-------------------|
| | JULY 1998 | | GENERAL REVISIONS |
| 1 | | | Rev. |

OLD BENNINGTON
UTILITY PLAN
 WALLONSAC AVENUE
 STA. 103+50 TO 107+47

BENNINGTON



| | |
|----------------|---------------|
| Project No. | 20600010 |
| Proj. Manager | R.F. KISCHIKO |
| Proj. Designer | L.A. BLACK |
| Drawn By | M. MELLEUR |
| Checked By | R.F. KISCHIKO |
| Scale | AS SHOWN |
| Approved | |
| Date | MARCH 1998 |