

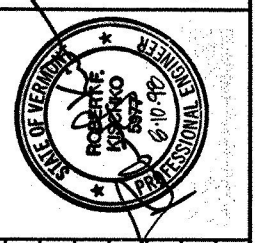


Dufresne-Henry, Inc.
Consulting Engineers
North Springfield, Vermont
Tel: (802) 886-2266 • Fax: (802) 886-2260 • www.d-h-inc.com

Rev.	By	Date	Description
1	ADD DUCK BANK	LAB 7/29/98	

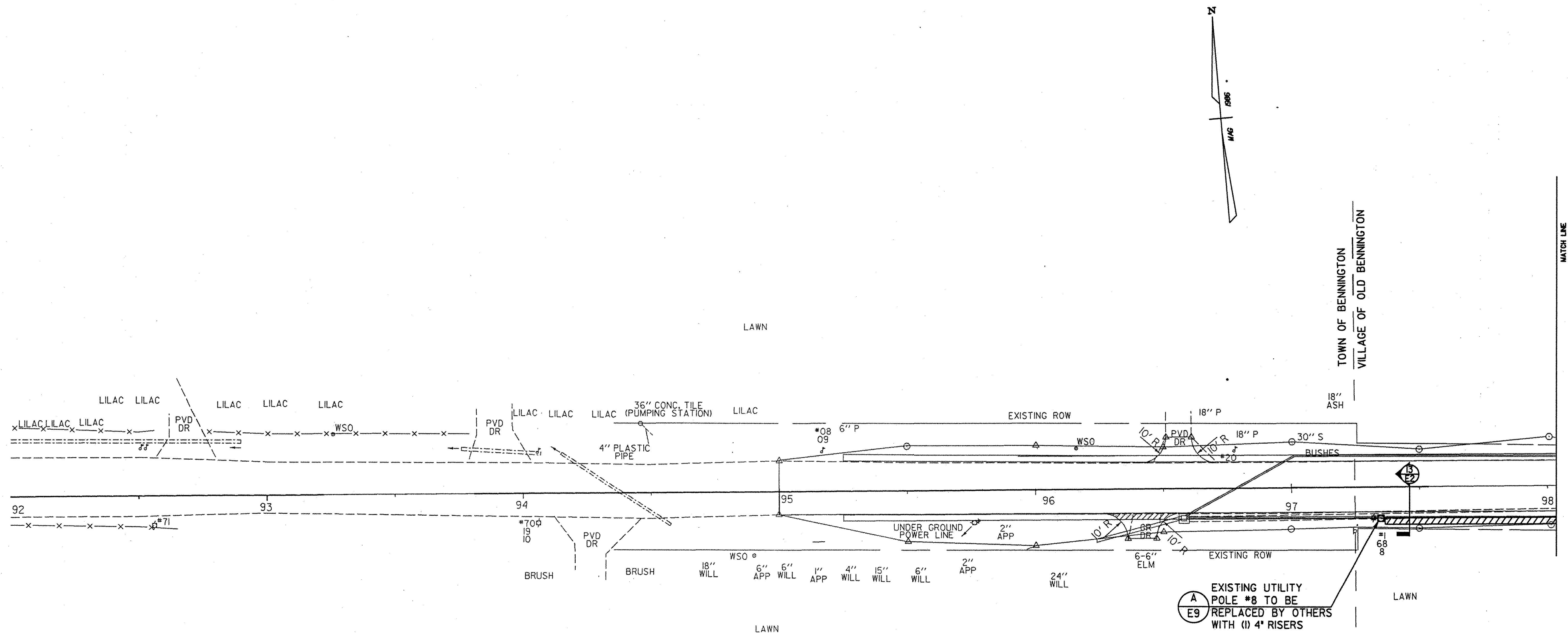
OLD BENNINGTON
UTILITY PLAN
WALLOMSAC AVENUE
STA. 95+00 TP 98+00

BENNINGTON

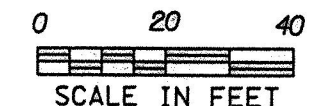


Project No.	20800010	Date	MARCH 19 98
Proj. Manager	R.F. KISCHIKO	Approved	
Proj. Designer	L.A. BLACK	Scale	AS SHOWN
Drawn By	N. NELLEUR	Sheet	23 of 63
Checked By	R.F. KISCHIKO	Date	6-10-98

Sheet 23 of 63
6170051



EXISTING UTILITY POLE #8 TO BE REPLACED BY OTHERS WITH (1) 4" RISERS



LEGEND	
	UTILITY POLE
	STREET LIGHT
	PAD MOUNT TRANSFORMER
	TELEPHONE PEDESTAL
	CATV PEDESTAL
	PRIMARY ELECTRICAL TERMINAL CABINET
	DUCTBANK, SEE DUCTBANK SCHEDULE FOR SIZE AND CONDUIT CONFIGURATION AND DETAIL A, SHEET E7
	4" UNDERGROUND PVC CONDUIT FOR PRIMARY ELECTRICAL CABLES. SEE TRENCH DETAIL.
	2" UNDERGROUND PVC CONDUIT FOR HOUSE SERVICE ELECTRICAL CABLES. SEE TRENCH DETAIL.
	4" TELEPHONE CONDUIT
	DIRECT BURIED CATV CABLE, INSTALLED BY ADELPHIA CABLE.
	TRENCH WITH PVC CONDUIT FOR HOUSE SERVICE ELECTRICAL CABLE, 2" TELEPHONE CONDUIT AND CATV CABLE. SEE DETAIL B, SHEET E7.
	2" UNDERGROUND PVC CONDUIT WITH 3# AWG CU CONDUCTORS FOR STREETLIGHTING.
	ELECTRICAL SERVICE METER SOCKET, SIZE AS NOTED.

UTILITY CONTACTS:

- CENTRAL VERMONT PUBLIC SERVICE:
RANDY SCHRAMM (802) 375-2206
- BELL ATLANTIC:
WAYNE PRESCOTT (802) 747-1074
- ADELPHIA CABLE COMMUNICATIONS:
ERNIE THOMPSON (802) 447-1534