

GRANITE BRICK PAVING (GUTTERS)
 REV. STA. 98+00 LT. ~ FAIR. ST. STA. 80+55 LT.
 FAIR. ST. STA. 80+55 RT. ~ STA. 103+50 LT.
 REV. STA. 98+00 RT. ~ STA. 103+50 RT.

NOTE: UNDERDRAIN OFFSET MAYBE ADJUSTED AS NEEDED TO AVOID CONFLICT WITH UTILITIES AS APPROVED BY THE ENGINEER.

THE ACTUAL LOCATION OF THE DROP INLET @ 100+08 RT. MAYBE ADJUSTED IN THE FIELD TO AVOID CONFLICT WITH THE SEWER MANHOLE AT THAT STATION AS DIRECTED BY THE ENGINEER.

CONCRETE MANHOLE WITH CAST IRON COVER (MOD)
 STA. 100+08 RT.
 STA. 101+44 RT.
 STA. 102+64 RT.

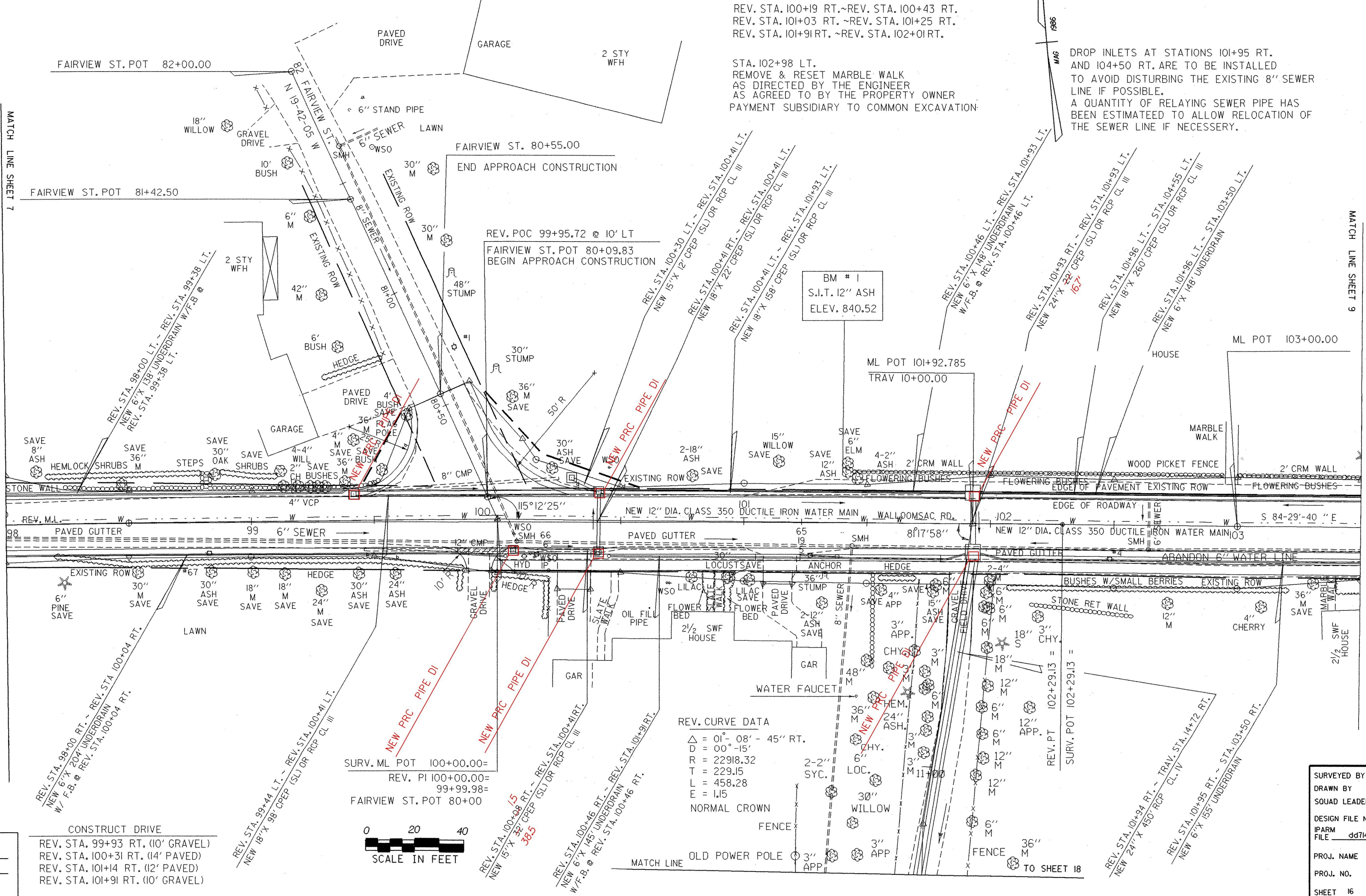
5" PORTLAND CEMENT CONCRETE SIDEWALK
 REV. STA. 99+98 RT. ~ REV. STA. 100+24 RT.
 REV. STA. 100+38 RT. ~ REV. STA. 101+08 RT.
 REV. STA. 101+20 RT. ~ REV. STA. 101+86 RT.
 REV. STA. 101+96 RT. ~ STA. 103+50 RT.

8" PORTLAND CEMENT CONCRETE SIDEWALK
 REV. STA. 100+19 RT. ~ REV. STA. 100+43 RT.
 REV. STA. 101+03 RT. ~ REV. STA. 101+25 RT.
 REV. STA. 101+91 RT. ~ REV. STA. 102+01 RT.

STA. 102+98 LT.
 REMOVE & RESET MARBLE WALK AS DIRECTED BY THE ENGINEER AS AGREED TO BY THE PROPERTY OWNER PAYMENT SUBSIDIARY TO COMMON EXCAVATION

NOTE: TEMPORARY EROSION CONTROL METHODS AS PER STANDARD SHEETS T-1 & T-2 ARE TO BE USED ON THIS PROJECT AS APPROVED AND DIRECTED BY THE ENGINEER.

DROP INLETS AT STATIONS 101+95 RT. AND 104+50 RT. ARE TO BE INSTALLED TO AVOID DISTURBING THE EXISTING 8" SEWER LINE IF POSSIBLE. A QUANTITY OF RELAYING SEWER PIPE HAS BEEN ESTIMATED TO ALLOW RELOCATION OF THE SEWER LINE IF NECESSARY.

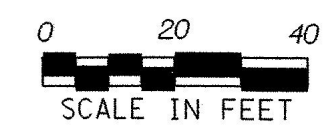


MATCH LINE SHEET 7

MATCH LINE SHEET 9

DATUM	
VERTICAL	NGVD 1929
HORIZONTAL	N/A

CONSTRUCT DRIVE
 REV. STA. 99+93 RT. (10' GRAVEL)
 REV. STA. 100+31 RT. (14' PAVED)
 REV. STA. 101+14 RT. (12' PAVED)
 REV. STA. 101+91 RT. (10' GRAVEL)



REV. CURVE DATA
 $\Delta = 01^\circ 08' - 45''$ RT.
 $D = 00^\circ - 15''$
 $R = 22918.32$
 $T = 229.15$
 $L = 458.28$
 $E = 1.15$
 NORMAL CROWN

SURVEYED BY	MOREAU	DATE	1/86
DRAWN BY	A. JONES	DATE	6/22/93
SQUAD LEADER	S. MENARD		
DESIGN FILE NO.	/sqdc/84d714/dd714.dgn		
IPARM FILE	dd714i02.i	DATE PLOTTED	28-APR-1999
PROJ. NAME	OLD BENNINGTON		
PROJ. NO.	M 1400 (4) S		
SHEET	16	OF	63 SHEETS