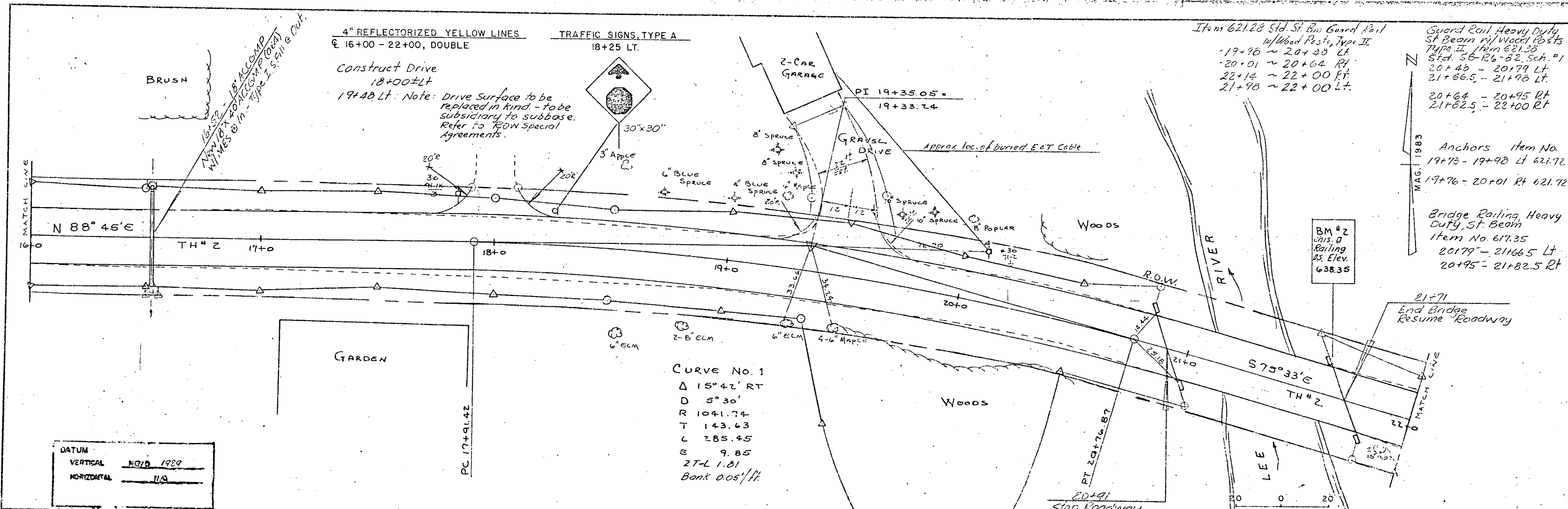
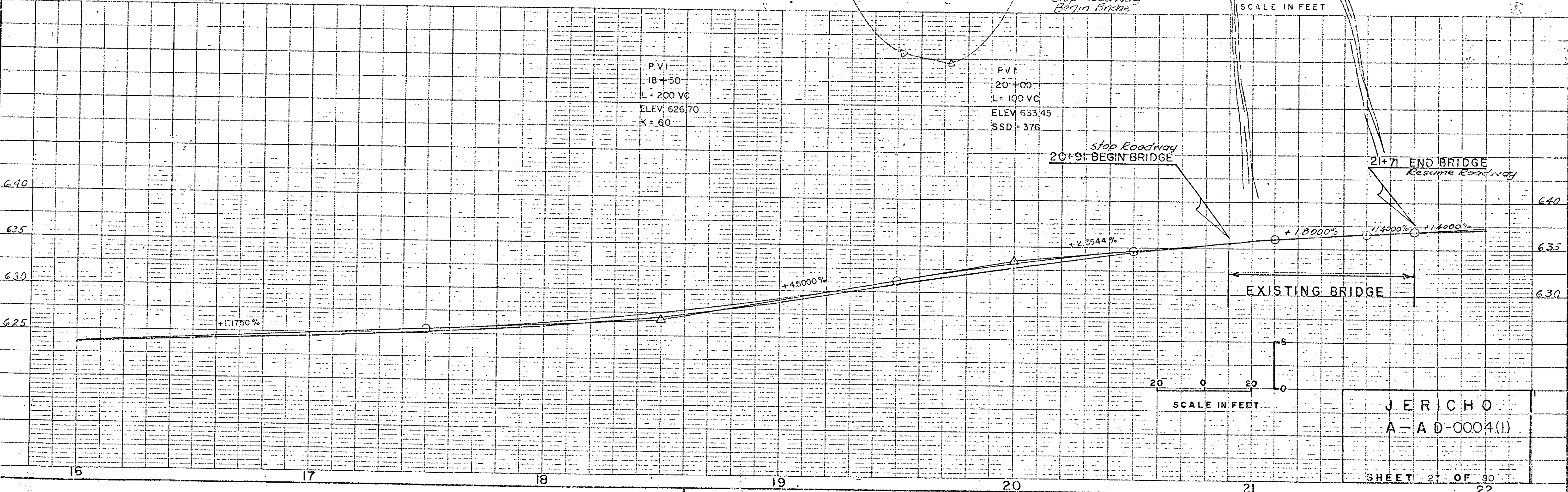


PLAN
 DATE: 10/1/83
 DRAWN BY: [illegible]
 CHECKED BY: [illegible]
 PROJECT: [illegible]

PROFILE
 DATE: 10/1/83
 DRAWN BY: [illegible]
 CHECKED BY: [illegible]
 PROJECT: [illegible]



DATUM
 VERTICAL NGVD 1929
 HORIZONTAL N/A



JERICH O
 A-A D-0004(I)

SHEET 21 OF 30

4" REFLECTORIZED YELLOW LINES
 E 16+00 - 22+00, DOUBLE
 TRAFFIC SIGNS, TYPE A
 18+25 LT.
 Construct Drive
 18+00±LT
 19+48 LT. Note: Drive Surface to be replaced in kind. - to be subsidiary to subbase. Refer to ROW Special Agreements.

Item 621.28 Std. St. Beam Guard Rail w/Wood Posts, Type II
 19+98 ~ 20+48 Lt.
 20+01 ~ 20+64 Rt.
 22+14 ~ 22+00 Rt.
 21+98 ~ 22+00 Lt.
 Guard Rail Heavy Duty St. Beam w/Wood Posts Type II Item 621.38
 Std. 56-R6-B2 Sch. #1
 20+48 - 20+79 Lt.
 21+66.5 - 21+98 Lt.
 20+64 - 20+95 Rt.
 21+82.5 - 22+00 Rt.
 Anchors Item No. 19+73 - 19+98 Lt 621.72
 19+76 - 20+01 Rt 621.72
 Bridge Railing Heavy Duty St. Beam Item No. 617.35
 20+79 - 21+66.5 Lt
 20+95 - 21+82.5 Rt

BM #2
 Chris. D
 Railing
 15. Elev.
 638.35

21+71
 End Bridge
 Resume Roadway

CURVE NO. 1
 Δ 15°42' RT
 D 5°30'
 R 1041.74
 T 143.63
 L 285.45
 E 9.85
 2T-L 1.81
 Bank 0.05'/ft.

SCALE IN FEET

SCALE IN FEET