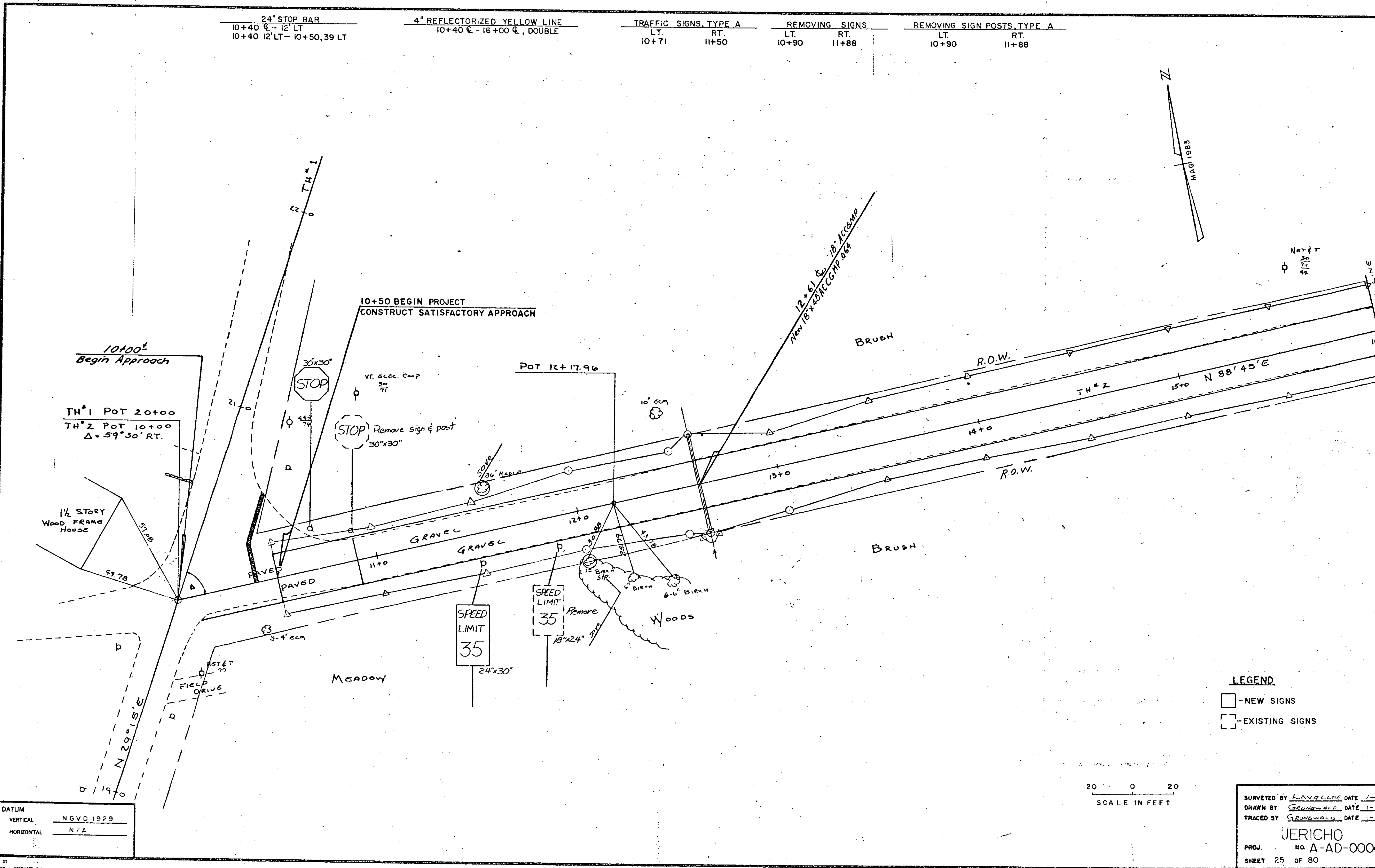
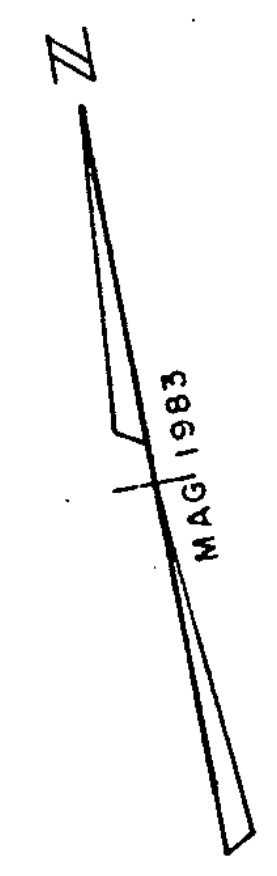


24" STOP BAR 10+40 C-12' LT 10+40 12' LT - 10+50, 39 LT		4" REFLECTORIZED YELLOW LINE 10+40 C-16+00 C, DOUBLE		TRAFFIC SIGNS, TYPE A LT. 10+71 RT. 11+50		REMOVING SIGNS LT. 10+90 RT. 11+88		REMOVING SIGN POSTS, TYPE A LT. 10+90 RT. 11+88	
---	--	---	--	--	--	---------------------------------------	--	--	--



NET # T
30
21
44

10+00[±]
Begin Approach
TH#1 POT 20+00
TH#2 POT 10+00
Δ = 59° 30' RT.

10+50 BEGIN PROJECT
CONSTRUCT SATISFACTORY APPROACH

POT 12+17.96

1/2 STORY
WOOD FRAME
HOUSE

MEADOW

WOODS

BRUSH

BRUSH

R.O.W.

R.O.W.

N 88° 45' E

MATCH LINE

- LEGEND**
- - NEW SIGNS
 - ◻ - EXISTING SIGNS

20 0 20
SCALE IN FEET

DATUM
VERTICAL NGVD 1929
HORIZONTAL N/A

SURVEYED BY LAVALLEE DATE 1-83
DRAWN BY GRUNWALD DATE 1-83
TRACED BY GRUNWALD DATE 1-83
JERICHO
PROJ. NO. A-AD-0004(1)
SHEET 25 OF 80