



NOTES

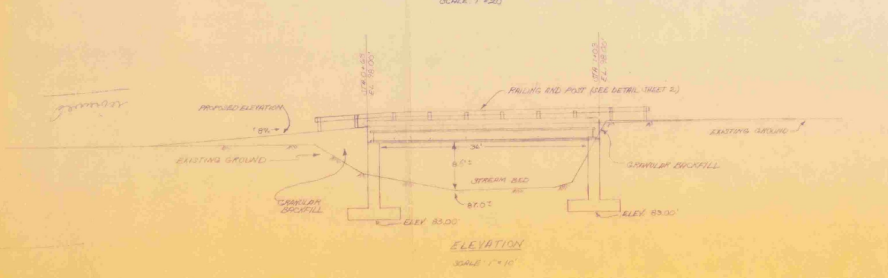
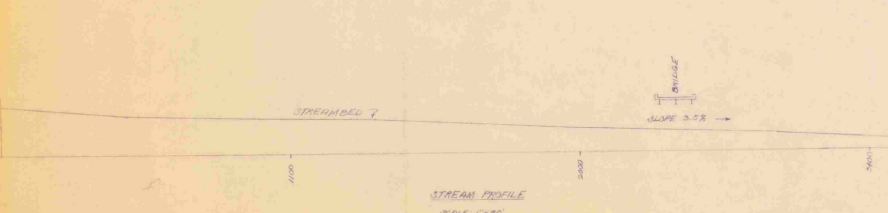
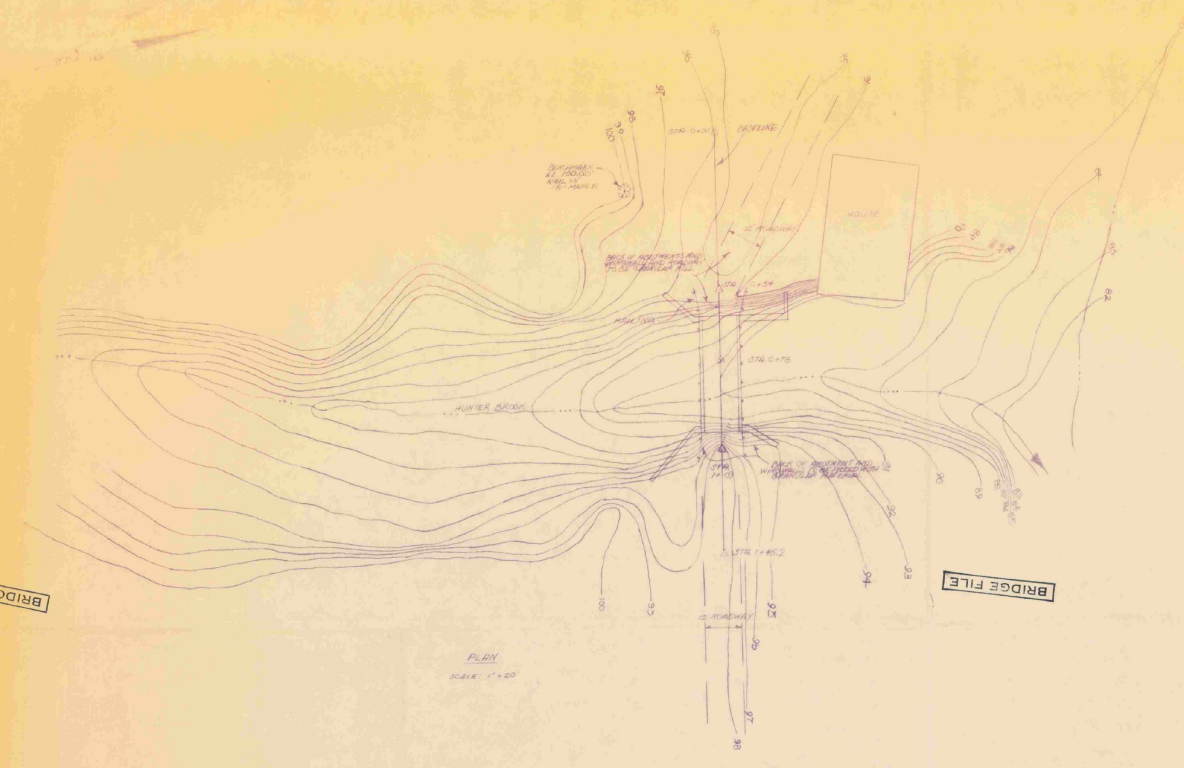
- 1) All materials and construction shall conform to current Standard Specifications for Highway and Bridge Construction, Massachusetts, as amended.
- 2) Design shall be based upon 100-year flood discharge of 12,000 cfs.
- 3) All structural steel shall conform to A. S. T. M. Specification A 36 and shall not be painted. All field connections shall be made in accordance with the A. S. T. M. Specification for Structural Steel. All connections shall be made in accordance with the A. S. T. M. Specification for Structural Steel.
- 4) Design shall be based upon the 100-year flood discharge plus one foot of water. The water shall approximate a single, constant wave from east to west. The water in ponds shall be considered to be 100% of the 100-year flood discharge and is indicated in the A. S. T. M. Specification for water systems.
- 5) All water and structural members shall conform to A. S. T. M. Specification for Structural Steel. All steel members shall be protected by the A. S. T. M. Specification for painting of structural steel. Painting shall be done in accordance with the A. S. T. M. Specification for painting of structural steel.
- 6) Allowable design stresses:

Concrete	Grade A	f _c	4000 psi	12,000 psi
	Grade B	f _c	3000 psi	9000 psi
Structural Steel	A 36	F _y	36,000 psi	58,000 psi
Reinforcing Steel		Design Stress (Tension)	20,000 psi	
		Design Stress (Compression)	16,000 psi	
- 7) After construction has been completed, the top of concrete beams shall be 100% under the water.
- 8) Minimum clear height shall be 12' 6" measured from the concrete surface to the top of the water table.
- 9) All concrete shall be placed in accordance with the A. S. T. M. Specification for concrete. All concrete shall be placed in accordance with the A. S. T. M. Specification for concrete.
- 10) All concrete shall be placed in accordance with the A. S. T. M. Specification for concrete. All concrete shall be placed in accordance with the A. S. T. M. Specification for concrete.
- 11) All concrete shall be placed in accordance with the A. S. T. M. Specification for concrete. All concrete shall be placed in accordance with the A. S. T. M. Specification for concrete.
- 12) All concrete shall be placed in accordance with the A. S. T. M. Specification for concrete. All concrete shall be placed in accordance with the A. S. T. M. Specification for concrete.
- 13) All concrete shall be placed in accordance with the A. S. T. M. Specification for concrete. All concrete shall be placed in accordance with the A. S. T. M. Specification for concrete.
- 14) All concrete shall be placed in accordance with the A. S. T. M. Specification for concrete. All concrete shall be placed in accordance with the A. S. T. M. Specification for concrete.
- 15) All concrete shall be placed in accordance with the A. S. T. M. Specification for concrete. All concrete shall be placed in accordance with the A. S. T. M. Specification for concrete.
- 16) All concrete shall be placed in accordance with the A. S. T. M. Specification for concrete. All concrete shall be placed in accordance with the A. S. T. M. Specification for concrete.
- 17) All concrete shall be placed in accordance with the A. S. T. M. Specification for concrete. All concrete shall be placed in accordance with the A. S. T. M. Specification for concrete.
- 18) All concrete shall be placed in accordance with the A. S. T. M. Specification for concrete. All concrete shall be placed in accordance with the A. S. T. M. Specification for concrete.
- 19) All concrete shall be placed in accordance with the A. S. T. M. Specification for concrete. All concrete shall be placed in accordance with the A. S. T. M. Specification for concrete.
- 20) All concrete shall be placed in accordance with the A. S. T. M. Specification for concrete. All concrete shall be placed in accordance with the A. S. T. M. Specification for concrete.
- 21) All concrete shall be placed in accordance with the A. S. T. M. Specification for concrete. All concrete shall be placed in accordance with the A. S. T. M. Specification for concrete.
- 22) All concrete shall be placed in accordance with the A. S. T. M. Specification for concrete. All concrete shall be placed in accordance with the A. S. T. M. Specification for concrete.
- 23) All concrete shall be placed in accordance with the A. S. T. M. Specification for concrete. All concrete shall be placed in accordance with the A. S. T. M. Specification for concrete.
- 24) All concrete shall be placed in accordance with the A. S. T. M. Specification for concrete. All concrete shall be placed in accordance with the A. S. T. M. Specification for concrete.
- 25) All concrete shall be placed in accordance with the A. S. T. M. Specification for concrete. All concrete shall be placed in accordance with the A. S. T. M. Specification for concrete.
- 26) All concrete shall be placed in accordance with the A. S. T. M. Specification for concrete. All concrete shall be placed in accordance with the A. S. T. M. Specification for concrete.

BRIDGE FILE

BRIDGE FILE

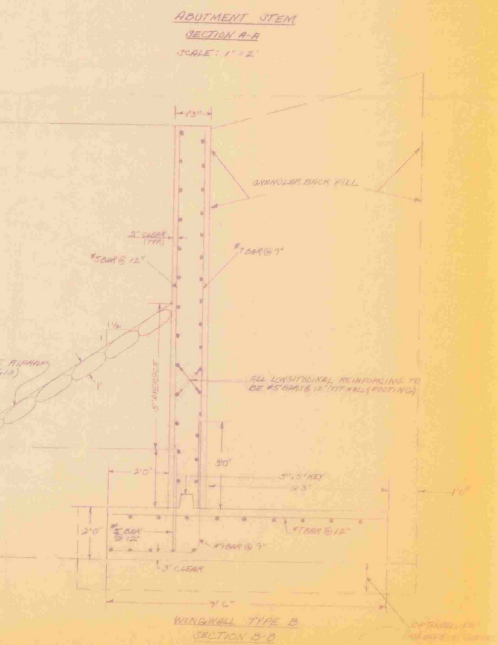
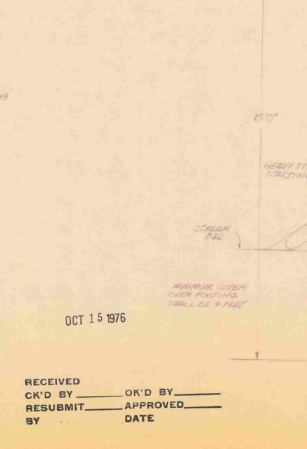
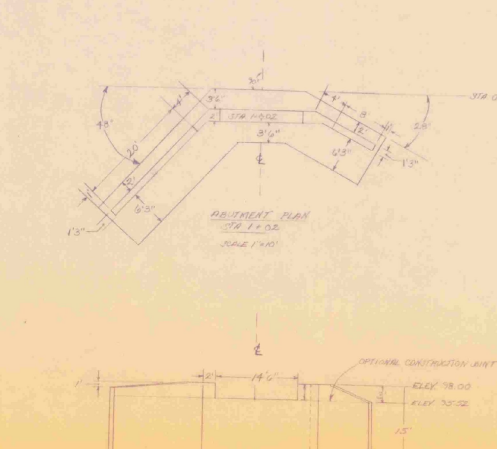
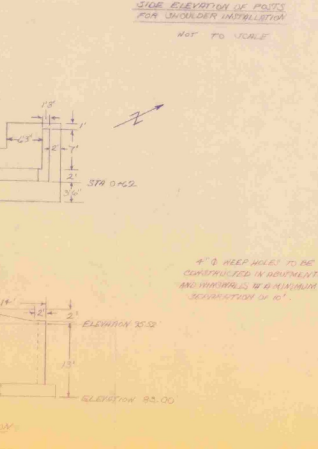
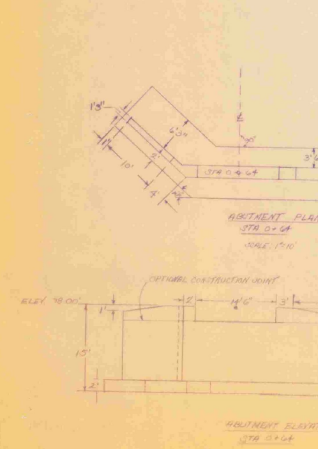
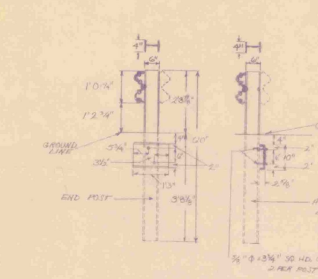
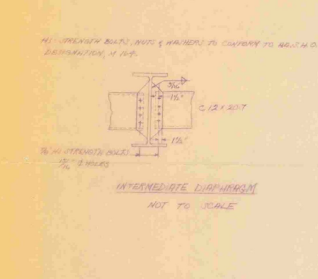
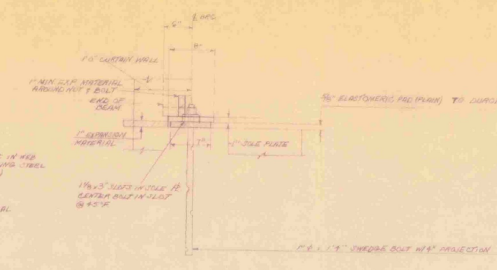
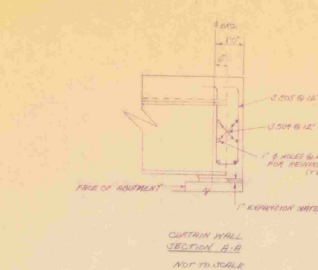
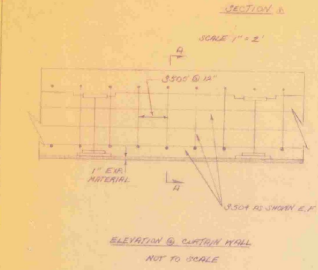
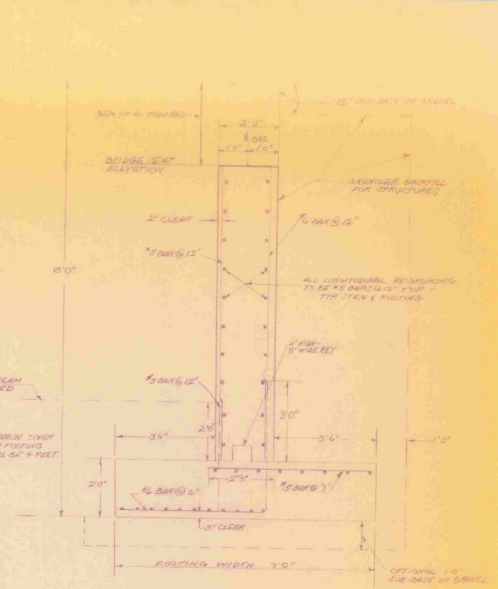
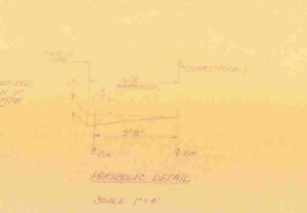
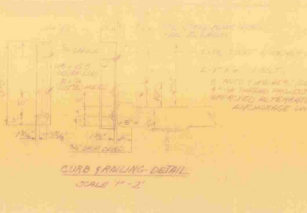
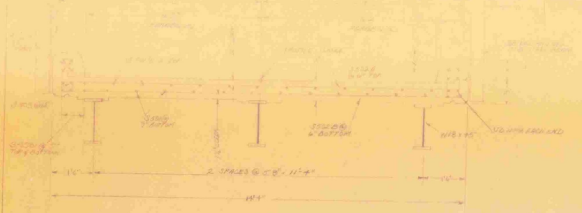
BRIDGE FILE



OCT 15 1976

RECEIVED
CK'D BY _____ OK'D BY _____
RESUBMIT BY _____ APPROVED BY _____
DATE _____

SOUTHERN VERMONT ENGINEERING, INC. CONSULTING ENGINEERS CIVIL, SANITARY, ENVIRONMENTAL & SITE PLANNING		TOWN OF NEWFAIR ENGINEERING & DESIGN PROJECT NO. 100-100-100 SHEET NO. 100-100-100-100	DRAWN BY CHECKED BY APPROVED BY DATE
--	--	---	---

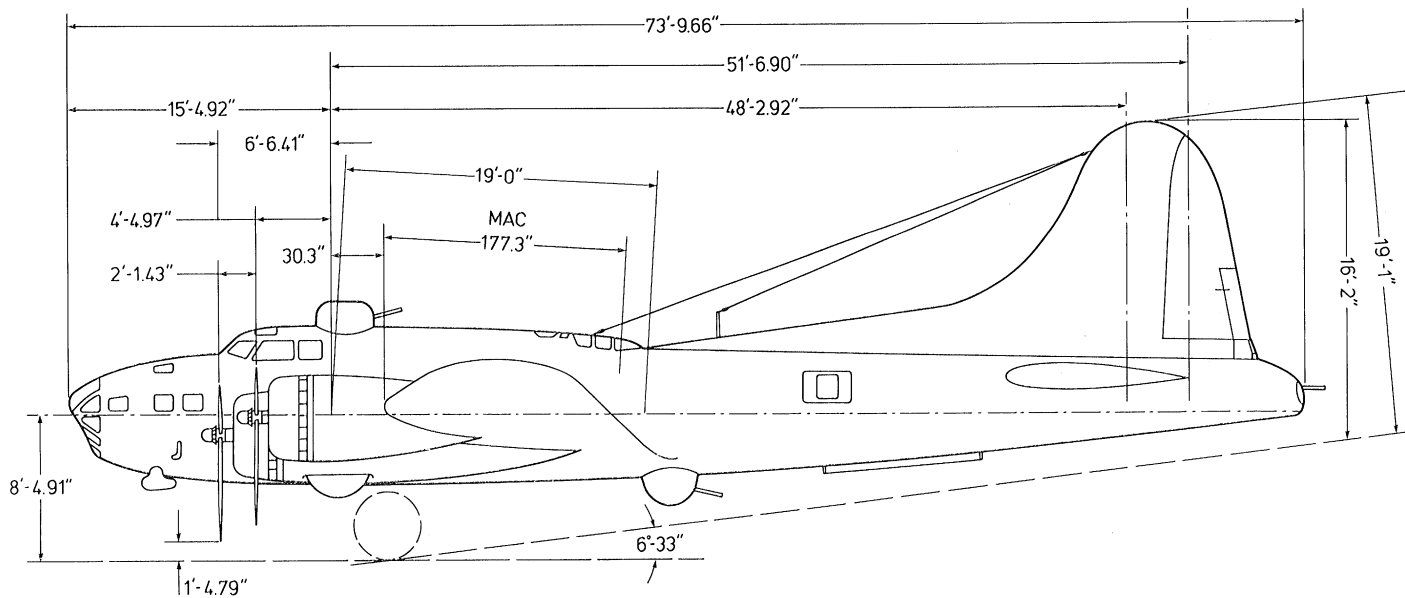
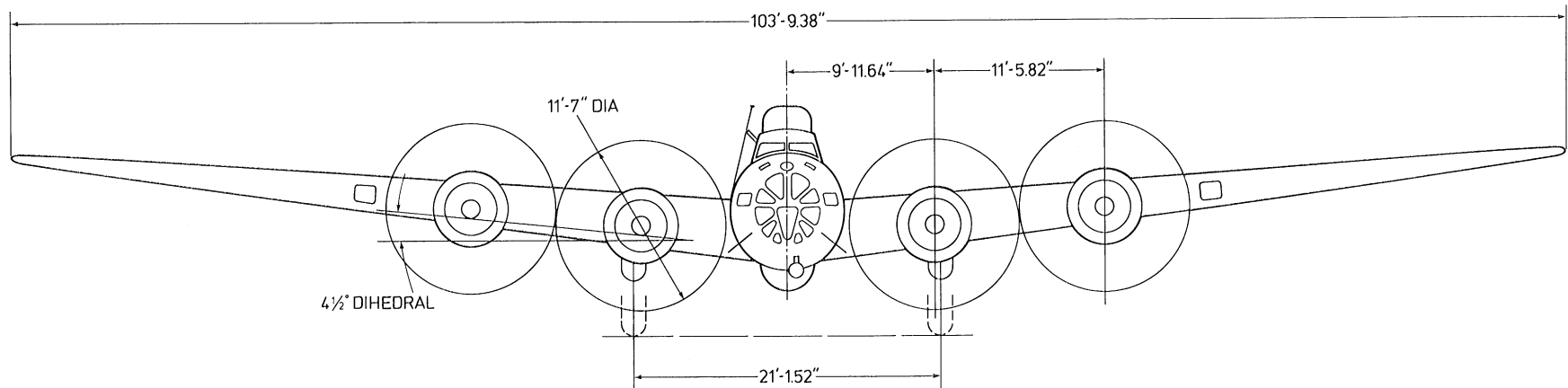


OCT 15 1976

RECEIVED
OK'D BY
RESUBMIT
BY

OK'D BY
APPROVED
DATE

1. JOB NUMBER & DESCRIPTION 2. SHEET NUMBER 3. DATE 4. SCALE		SOUTHERN VERMONT ENGINEERING, INC. CONSULTING ENGINEERS CIVIL SANITARY ENVIRONMENTAL & SITE	TOWN OF NEWFANE RECONSTRUCTION OF BRIDGE OVER RIVER NUMBER 30 02 PROJECT	SHEET NO. TOTAL SHEETS DATE SCALE
---	--	--	---	--



XEROX ENGINEERING SYSTEMS

B-17 FLYING FORTRESS
 MANUFACTURER: BOEING AIRCRAFT COMPANY
 TYPE: BOMBER
 DIMENSIONS: WINGSPAN 103 FEET 9 INCHES
 LENGTH 73 FEET 10 INCHES
 WEIGHT: 53,000 POUNDS (LOADED)
 SPEED: 317 MPH MAXIMUM AT 25,000 FEET
 RANGE: 3,000 MILES
 CREW: 9

INITIALS Vermont Agency of ^{DONE}
Transportation
PHASE 2-INTERSTATE
#122302-01

INITIALS Hanger 3134 ^{DONE}

1976

Newfane
Proj # 814

1976

NEWFARE

Proj. #814

TH 32 B57

1976