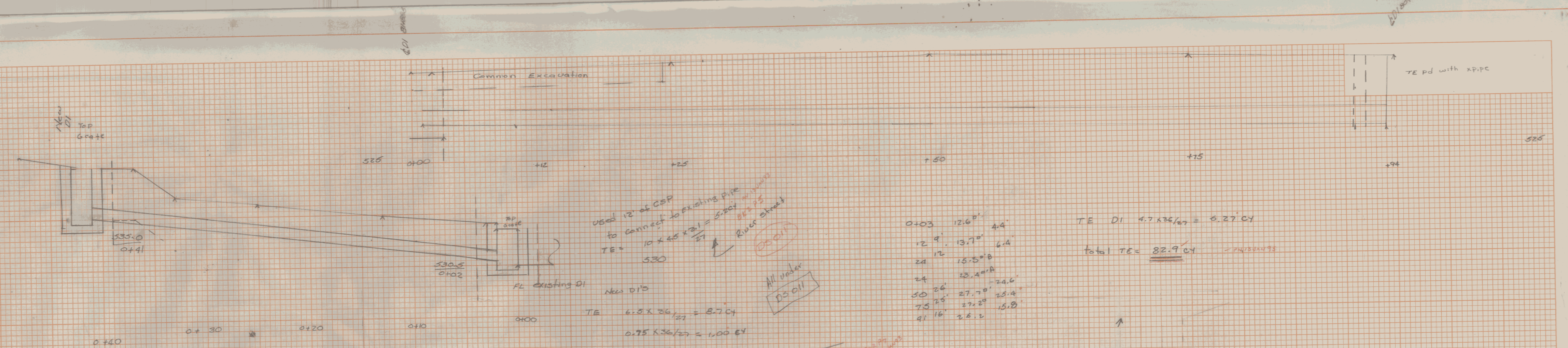


DATE
BY
REVIEWED
PLOTTED
TEMP. LAY
AREA CHECKED
FINAL SURVEY NOTE BOOK No.

DATE
BY
REVIEWED
PLOTTED
TEMP. LAY
AREA CHECKED
ORIGINAL SURVEY NOTE BOOK No.



Used 12" of CSP to connect to existing pipe
 $10 \times 45 \times 21 = 5.207$
 TE = 5.30
 River Street
 DS 017
 All under DS 011

0+03	12.6'	4.4'
12	13.7'	6.4'
24	15.5'	
24	23.4'	
50	27.7'	24.6'
75	27.2'	33.4'
91	26.2'	15.8'

TE DI $4.7 \times 36 / 27 = 6.27$ CY
 Total TE = 82.9 CY

River Street trav
 79 + 78 DS 015
 see Book 2 Pg 6
 New 12" x 36" PCCSP

TE $6.8 \times 36 / 27 = 8.7$ CY
 $0.75 \times 36 / 27 = 1.00$ CY

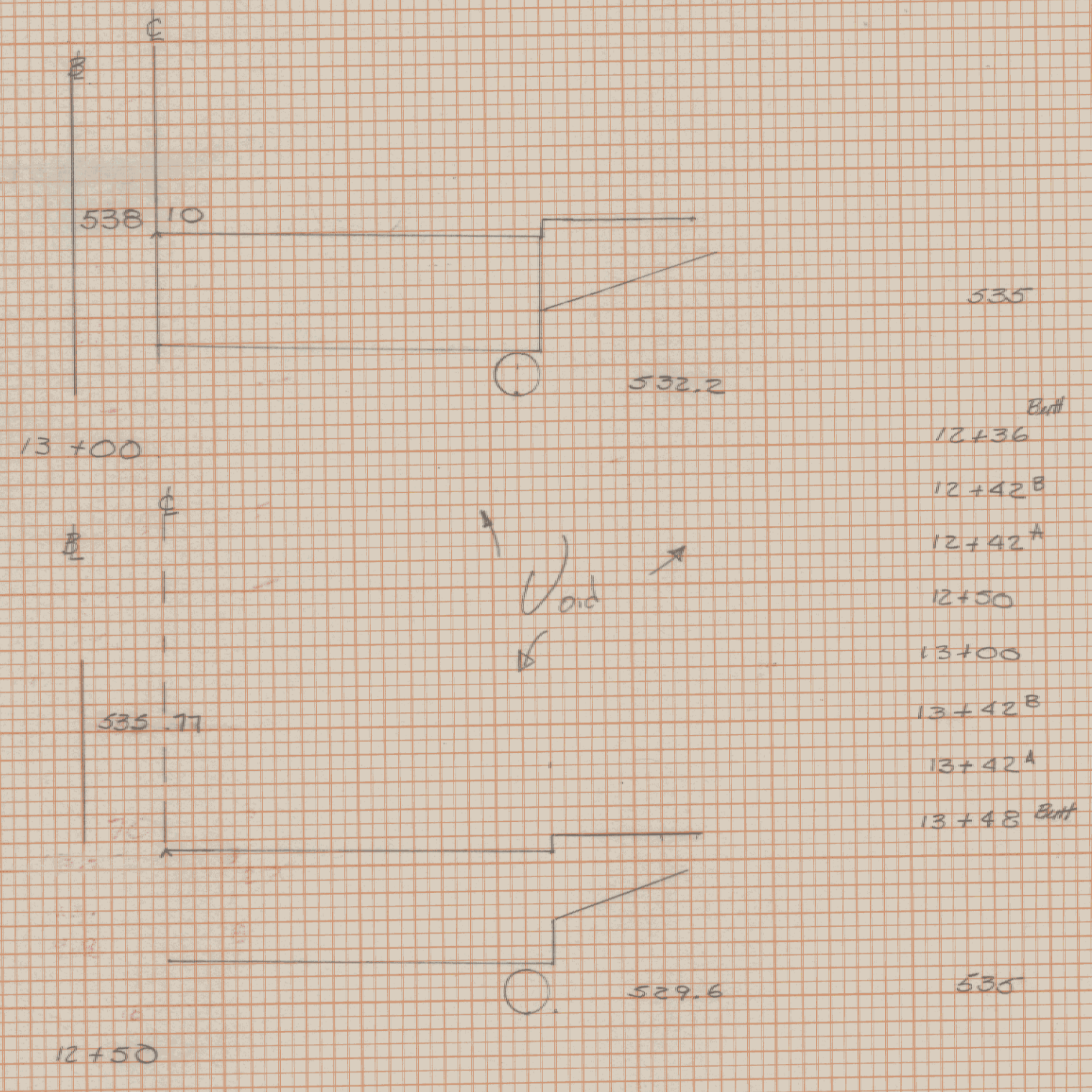
Pipe

5x	24'	6.66	CY
0	15.5'	1.20	
2	16.9'	1.92	
6	9.0'	2.7	
8	9.0'	1.20	
14	9.9'	3.16	
26	10.9'		
34			

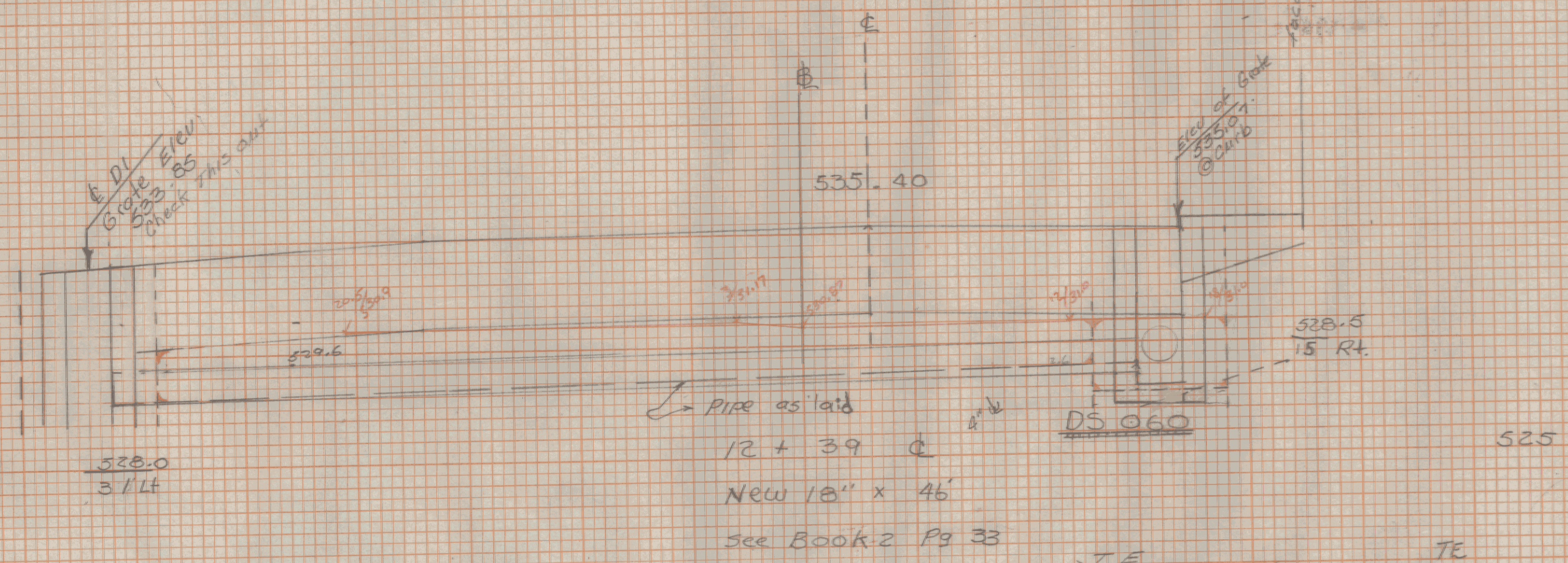
Total TE = 24.66
 31.16 CY
 $FS 10-12-92$

River street traverse
 80 + 90 Rt = $81 + 88.5$ Rt
 see Book 2 Page 14

DS 025
 River street traverse
 80 + 90
 New 18" x
 see Book 2 Page 11 &
 see sheet 219 of 325



DS 065
 12 + 39 ~ 13 + 45
 New 18" x 102
 see Book 2 Page 39
 see SA 2-A Page 40



TE	11	15.6	15.6	15.6
DI	6 x	36'	1.2	21.77
		15'	19.0	

TE
 $36 \times 103.5 / 27 = 13.8$ CY
 $10 \times 20' / 27 = 4.4$ CY
 18.2 CY
 1-15-93