

Rev. 66+80 RT
Begin Vertical Granite Curb

SECTION "C-C"
6.5 FEET 6.5 FEET

2" BET. CONC. PVT. SUBBASE

810

66+68 Lt.
Exist. Sewer Manhole
Adjust Elev. of Manhole
Non-Gov't. Part.

Rev 66+66 RT
CONSTRUCT DRIVE 13" WIDE (PAVED)

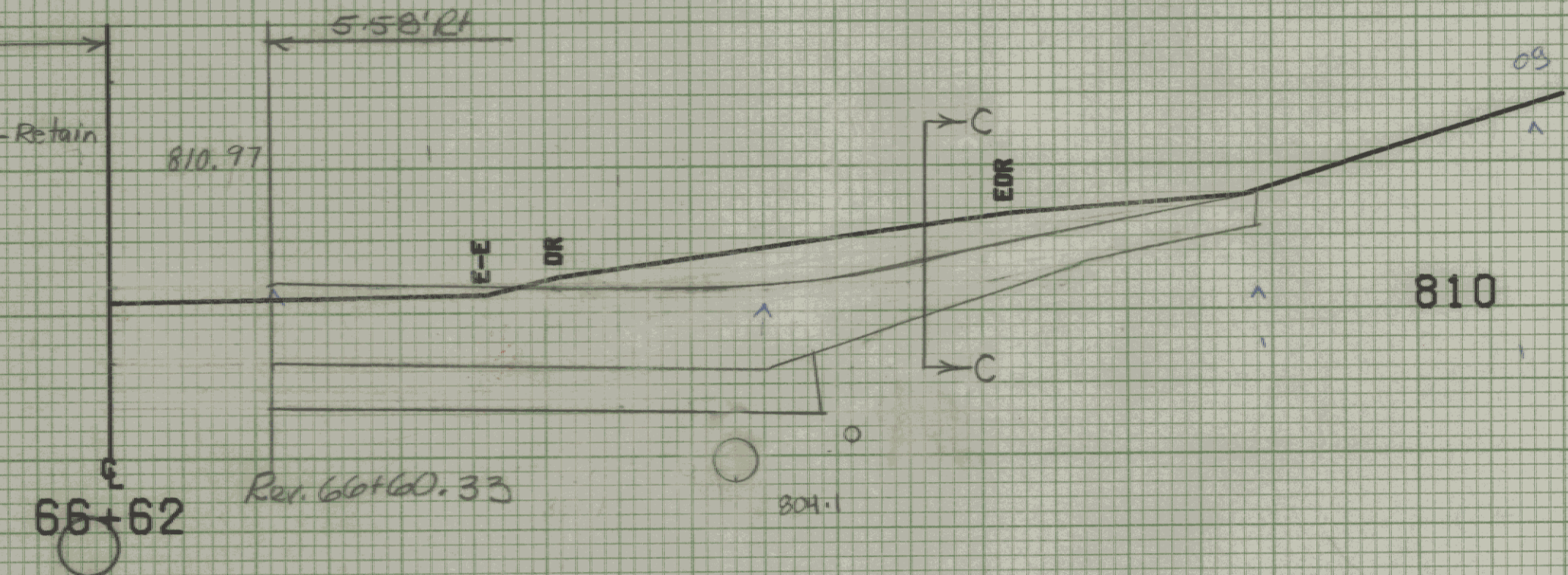
66+87 Rt.
Exist. Sewer Manhole
Adjust Elev. of Manhole
Non-Gov't. Part.

66+70.5
GAUGES FOR
GAS SYSTEM

width @ 0+42'
16'

66+62
I.P.

66+69 Lt.
Exist. 8" PVC SANITARY- Retain
INV. 300.09
(Assumed Loc.)

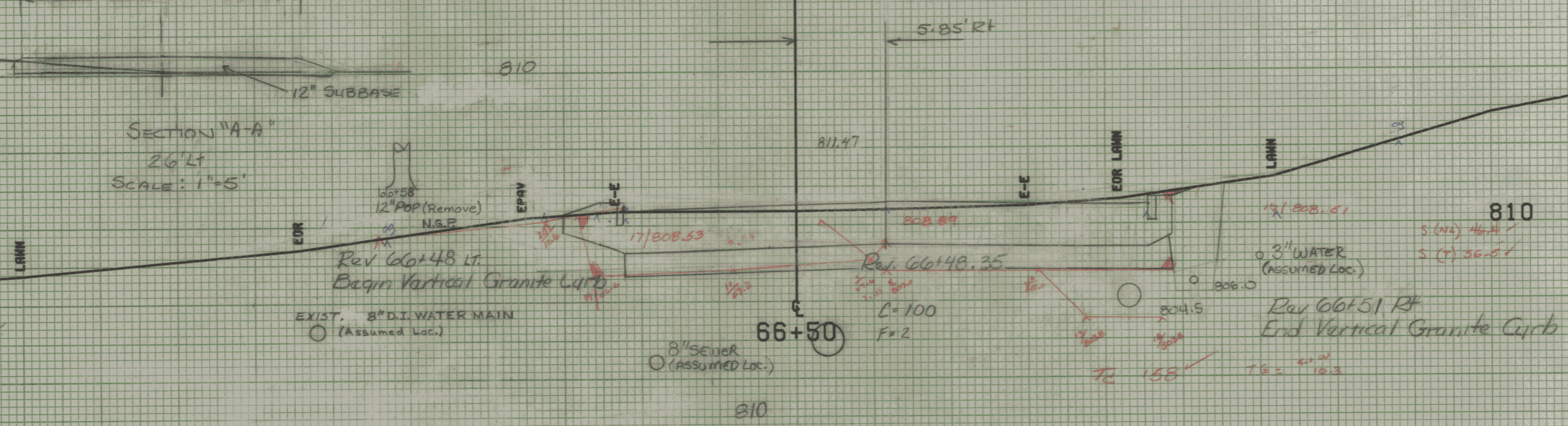


SECTION "B-B"
42' LT
SCALE: 1"=5'

REMOVING SMALL TREES
66+58 LT (12" POP) (NON-GOV'T. PART)

width @ 26' LT
18'

SECTION "A-A"
26' LT
SCALE: 1"=5'



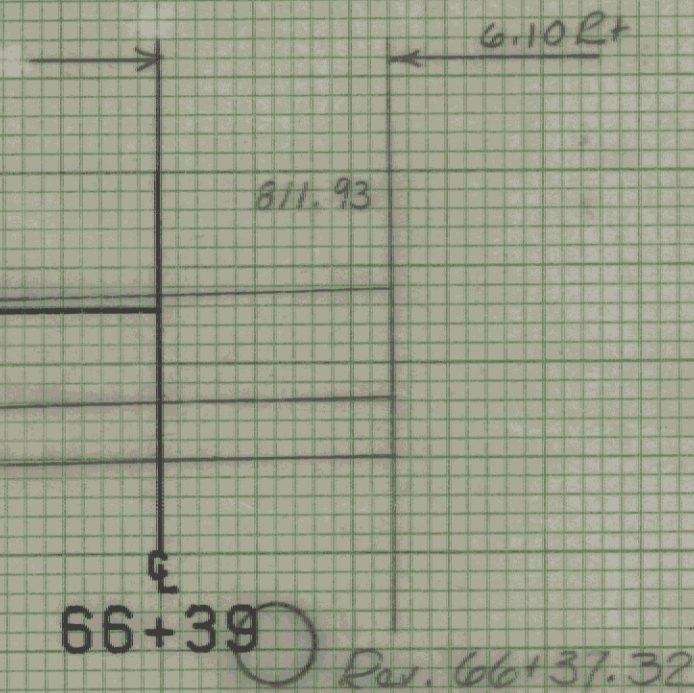
Rev 66+48 Lt.
Begin Vertical Granite Curb

66+50

Rev 66+51 RT
End Vertical Granite Curb

Rev 66+37 Lt
CONSTRUCT DRIVE (18' Wide, Gravel)
Rev 66+29 Lt
End Vertical Granite Curb

EXIST. 8" D.I. WATER MAIN
(Assumed Loc.)



66+39

FROM STA. 66+39	TO STA. 66+82
PROJECT NAME MONTPELIER MAIN7	
NO. M66C-16400(7)	PLOTTED 08/07/85
SURVEYED BY KASTNER-MOREAU	JUNE 1985
SHEET 23	OF 335 SHEETS

SCALE 5 FEET

1/11/85 9:49 12/1/85