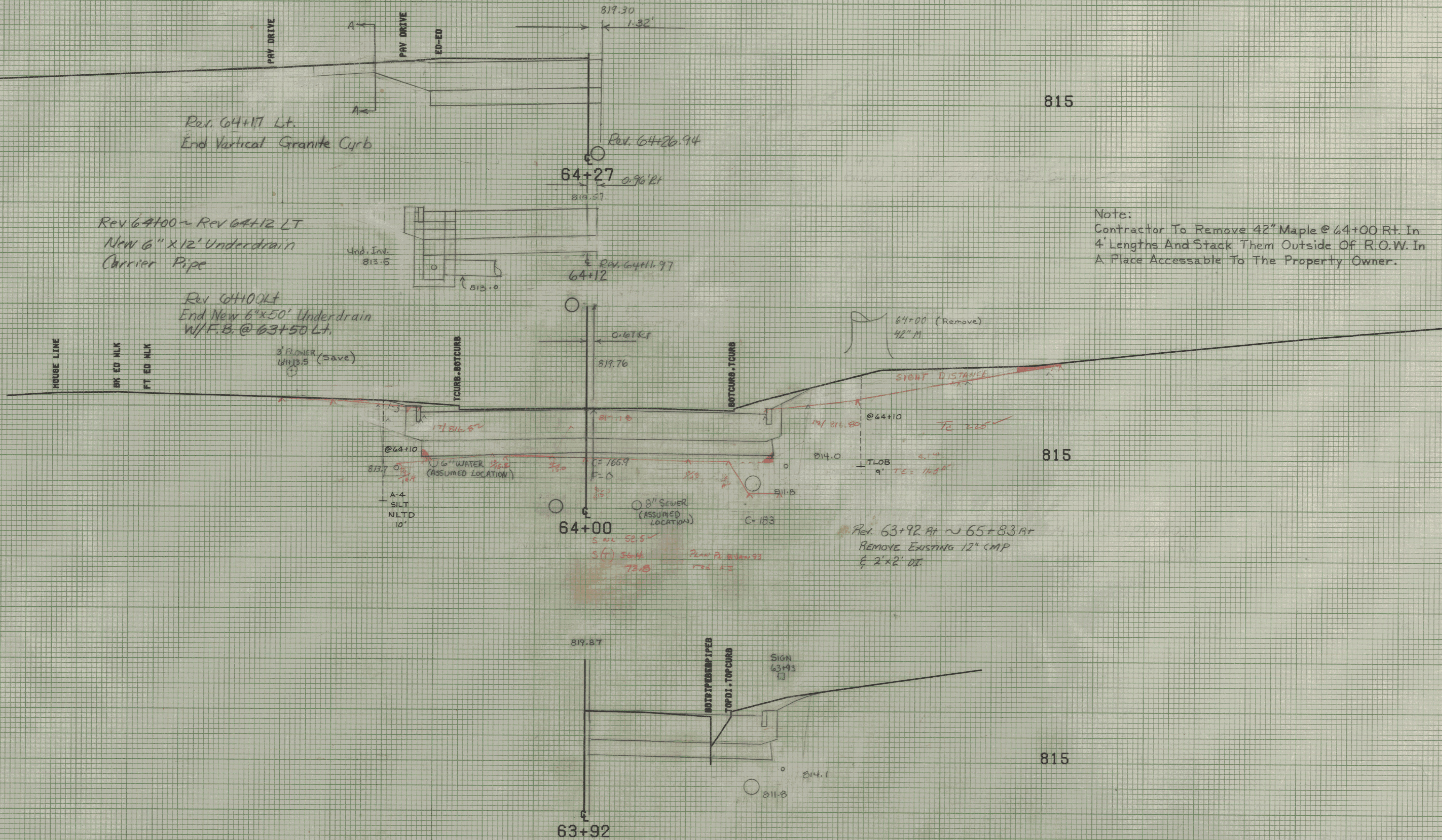


REV. 64+12 LT ~ 64+23 RT  
New 18" x 74' PCCSP. 064  
CAAP. 060



815

815

815

Note:  
Contractor To Remove 42" Maple @ 64+00 Rt. In  
4' Lengths And Stack Them Outside Of R.O.W. In  
A Place Accessible To The Property Owner.

FROM STA.	63+92	TO STA.	64+27
PROJECT NAME	MONTPELIER MAIN7		
NO. MEC-	M6400(7)		
SURVEYED BY	KASNER-MOREAU JUNE 1985		
SHEET	234	OF	335 SHEETS

SCALE 5 FEET

Handwritten note: 10/07/93