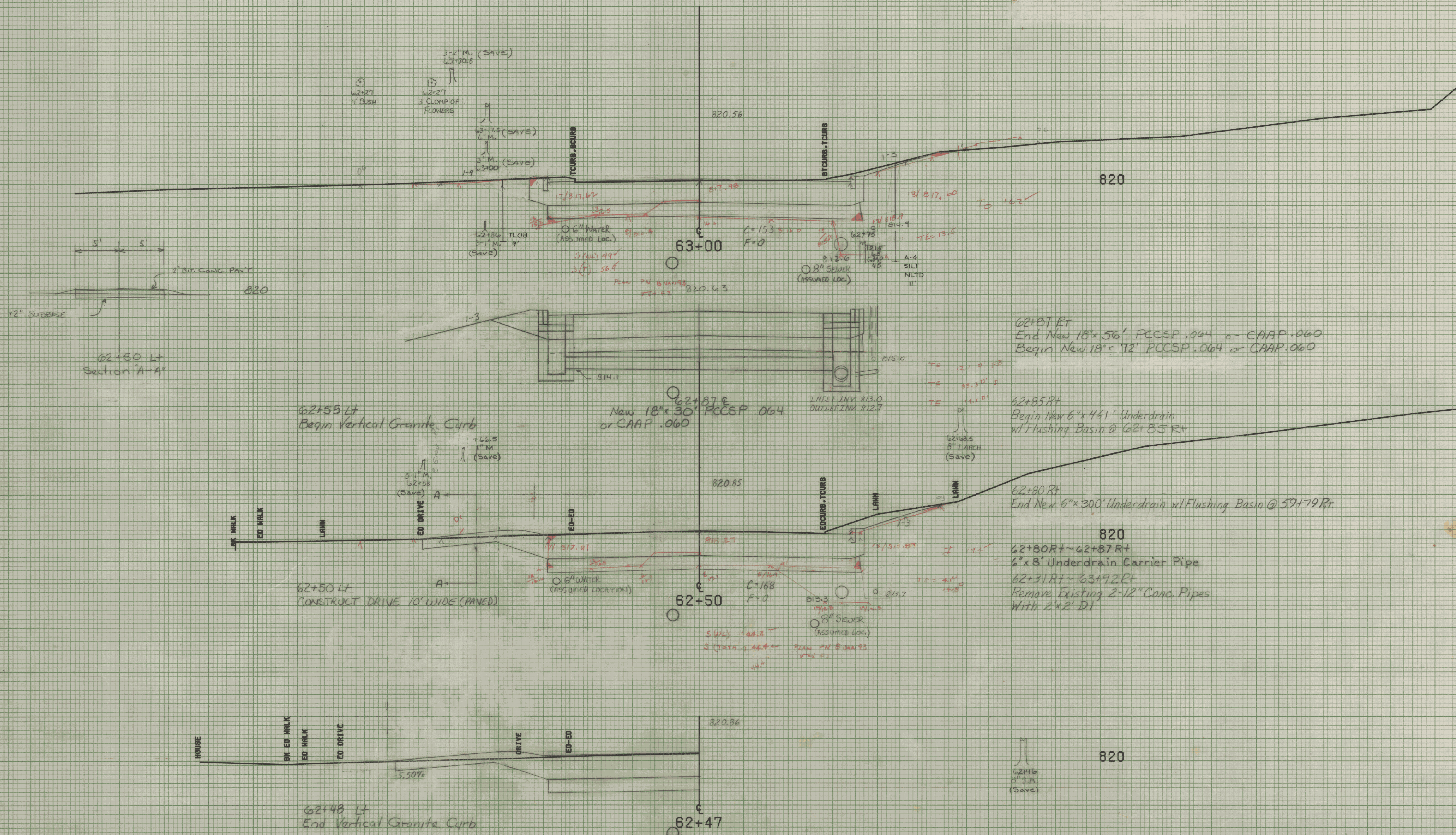


63+39 Rt  
Construct 10' Gravel Drive  
63+31 Rt  
End Vertical Granite Curb



62+81 Rt  
End New 18"x56' PCCSP .064 or CAAP .060  
Begin New 18"x72' PCCSP .064 or CAAP .060

62+85 Rt  
Begin New 6"x461' Underdrain  
w/ Flushing Basin @ 62+85 Rt

62+80 Rt  
End New 6"x300' Underdrain w/ Flushing Basin @ 59+79 Rt

820  
62+80 Rt ~ 62+87 Rt  
6"x8' Underdrain Carrier Pipe  
62+31 Rt ~ 63+92 Rt  
Remove Existing 2-12" Conc. Pipes  
With 2'x2' DI

FROM STA. 62+47 TO STA. 63+00  
PROJECT NAME MONTPELIER MAIN  
NO. M666-M6400(7)  
SURVEYED BY KASTNER-MOREAU JUNE 1985  
SHEET 22 OF 335 SHEETS

SCALE 5 FEET

Handwritten note: *New 2" x 2" 12/12/93*