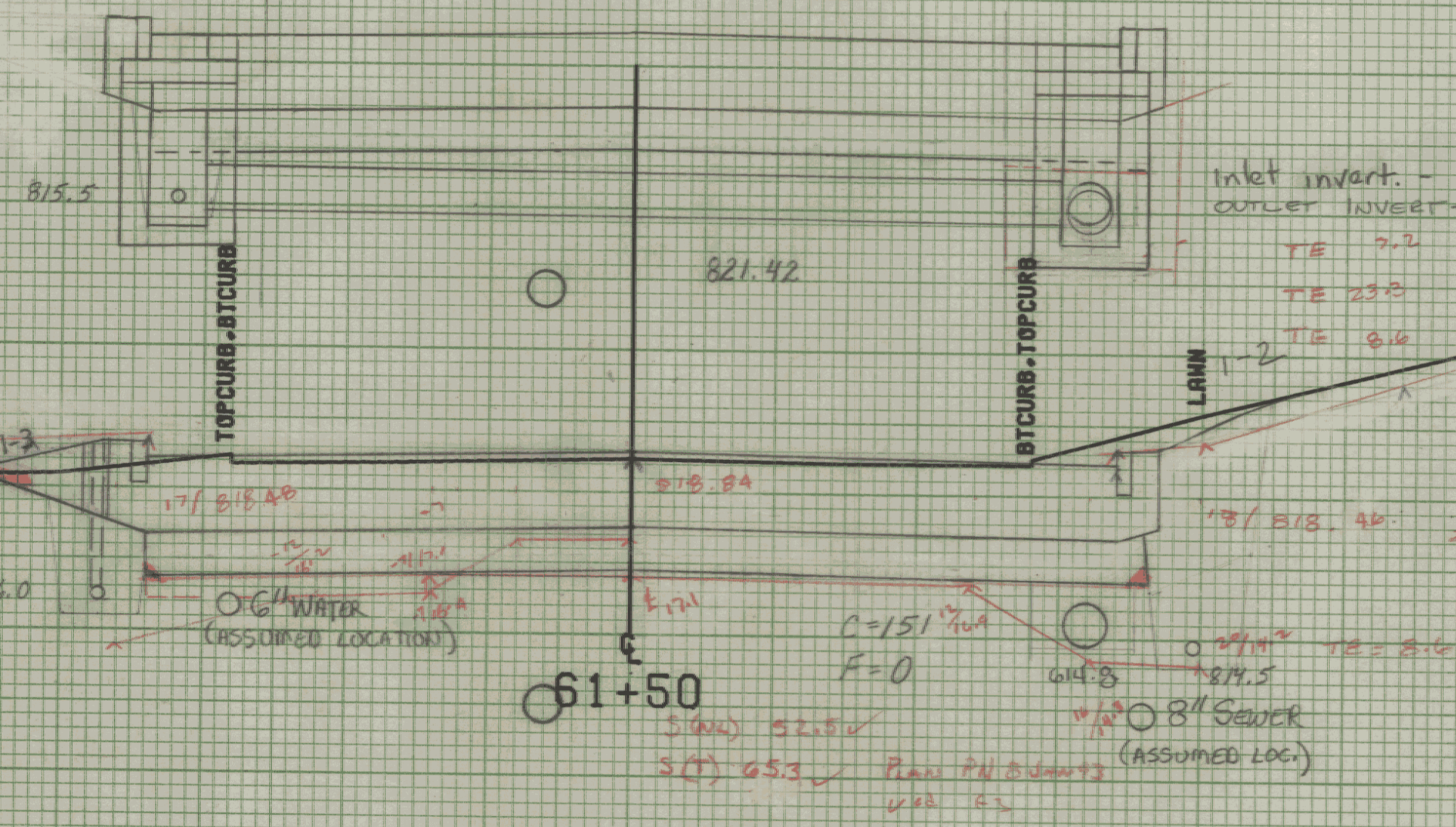


821.22
 61+85 E
 New 18" x 30" PCCSP .064
 OR CAAP.060

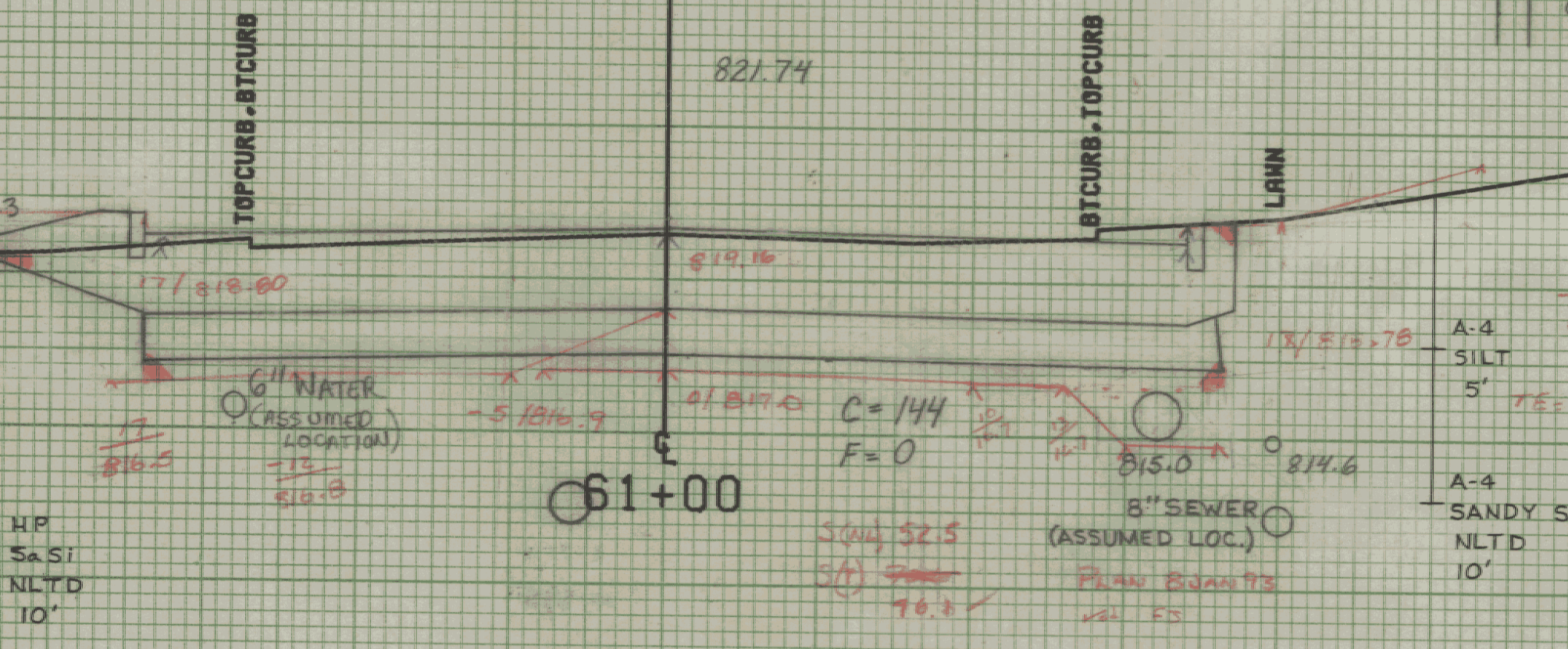
61+97 Rt
 Relocate Mailbox, Single Support (1)

61+85 Rt
 Begin New 18" x 46" PCCSP .064
 OR CAAP .060
 End New 18" x 204" PCCSP (.064)
 OR CAAP (.060)

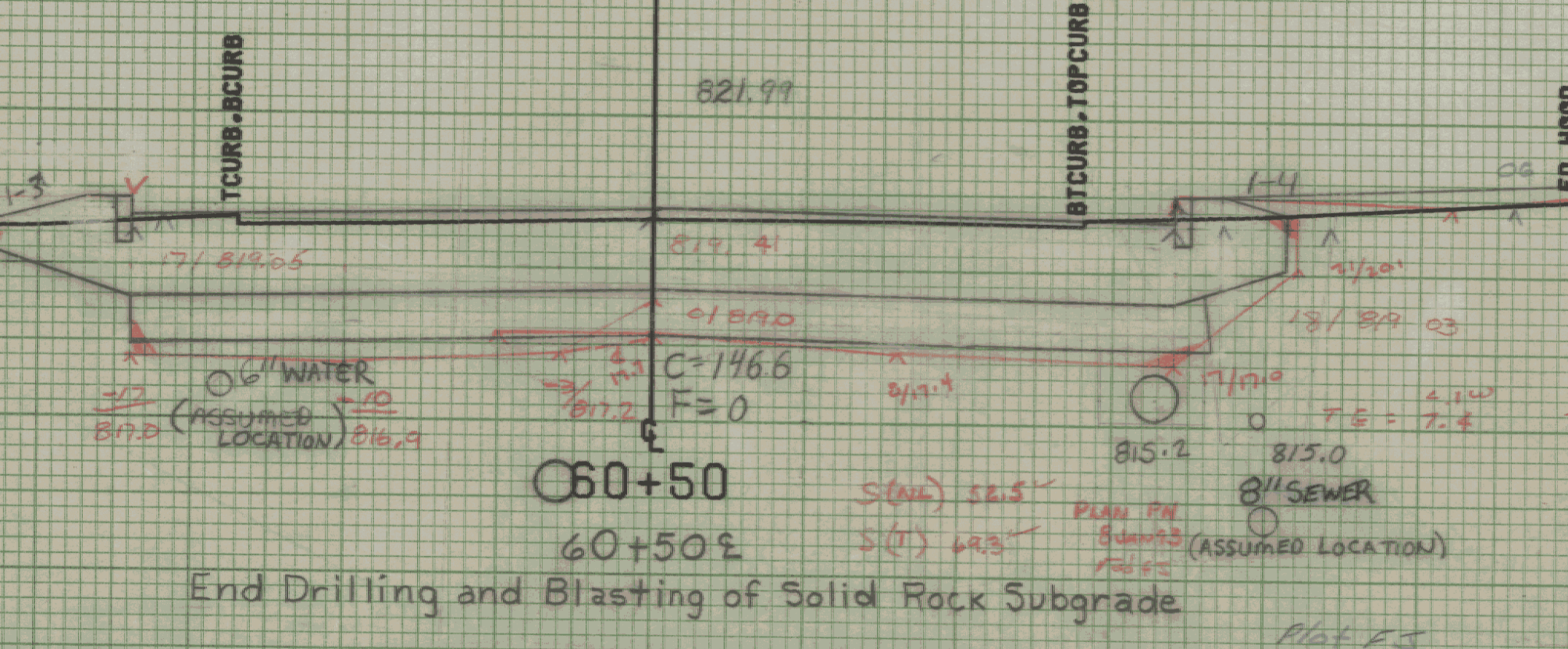


61+35 Lt ~ 61+85 Lt
 New 6" x 50' Underdrain
 W/F.B. @ 61+35 Lt

PT 61+16.90
 Dc 9°00'
 N.C.



60+56 Rt
 Exist. Sewer Manhole - Retain
 Adjust Elev. of Manhole
 Non-Gov't. Part.



End Drilling and Blasting of Solid Rock Subgrade

FROM STA. 60+50	TO STA. 61+50
PROJECT NAME	MONTPELIER MAIN7
NO. MISC.	M6400(7)
SURVEYED BY	KASTNER-MOREAU
SHEET 230 OF 335 SHEETS	PLOTTED 08/07/85
	JUNE 1985

SCALE 5 FEET

1/10/85