

REV. 43+50 R
New 18" x 30' PCCSP.064 OR CAAP.060

REV. 43+50 R, Begin New 18" x 40' PCCSP.064 OR CAAP.060

REV. 43+50 RT ~ REV. 43+66 RT
New 6" x 20' Underdrain Carrier Pipe

REV. 43+41 RT
Begin Vertical Granite Curb
755

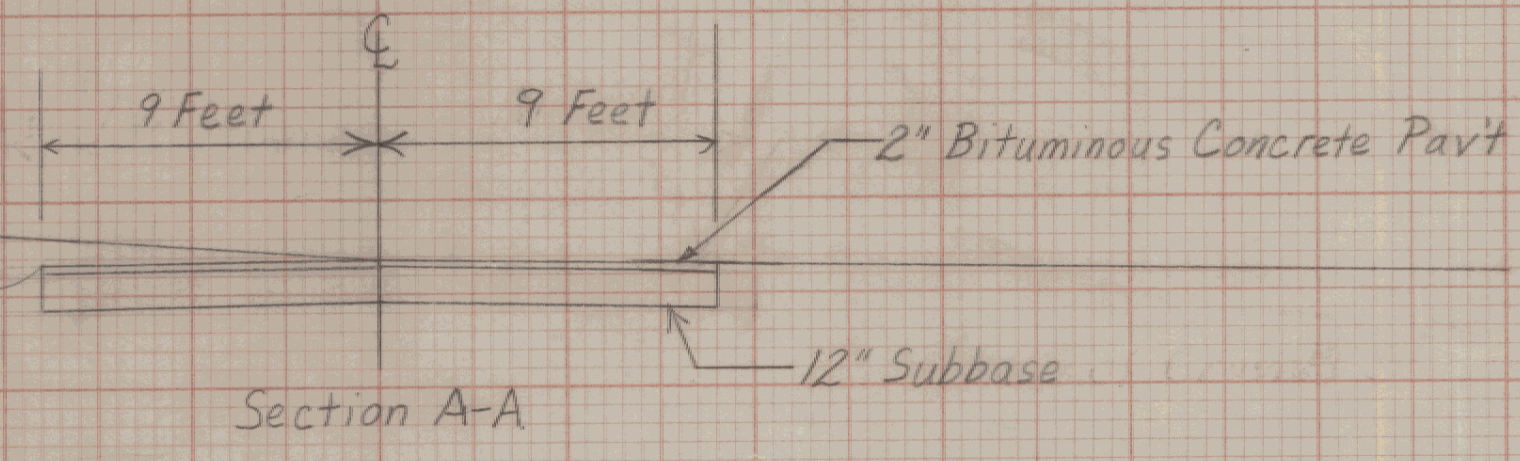
Inlet Elev. of
6" Underdrain to
be determined in
Field by the Engineer

REV. 43+50 LT
Begin New 24" x 148' PCCSP.064
OR CAAP.060
End New 24" x 166' PCCSP.064
OR CAAP.060

TS 15.8 FB
TE 31.3 DI
TC 14.8 PA

43+50
REV. 43+49.81

INL. 754.5
OUTL. 754.0
UNDERDRAIN 754.5



43+30
REV. 43+29.81

REV. 43+31 RT
Construct Drive
18' Wide (Paved)

REV. 43+22 RT
End Vertical Granite Curb

755.28

GMP
30
NET
50
432.14.5

750

8" ABS
(ASSUMED LOCATION)
NLTD
9'

43+00
REV. 42+99.81

10" CIP
(ASSUMED LOCATION)
S-SI
SANDY SILT
NET
5'

C = 131
F = B

S.P. 52.5' PAVED & PA 7/24/93
S.P. 72.4' FIELD Plot ES

| | | | |
|--------------|----------------------|-----------|------------------|
| FROM STA. | 43+00 | TO STA. | 43+50 |
| PROJECT NAME | MONTPELIER | | |
| NO. | ME64 | M6400 (7) | PLOTTED 05/04/87 |
| SURVEYED BY | KASTNER-MOREAU 06/85 | | |
| SHEET | 200 | OF 335 | SHEETS |

SCALE 5 FEET

Plot ES
Plot ES
/ Plan 9/11/93