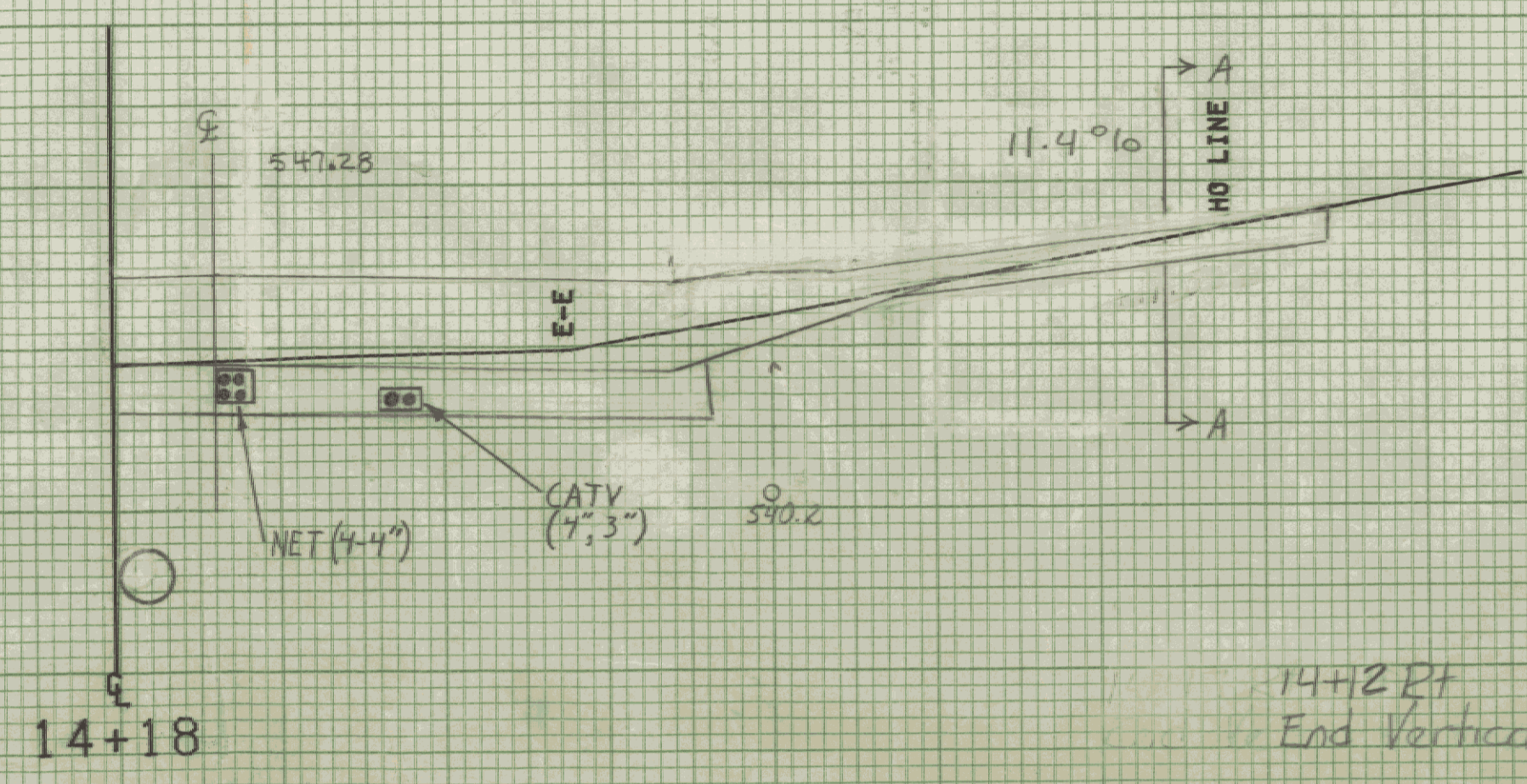
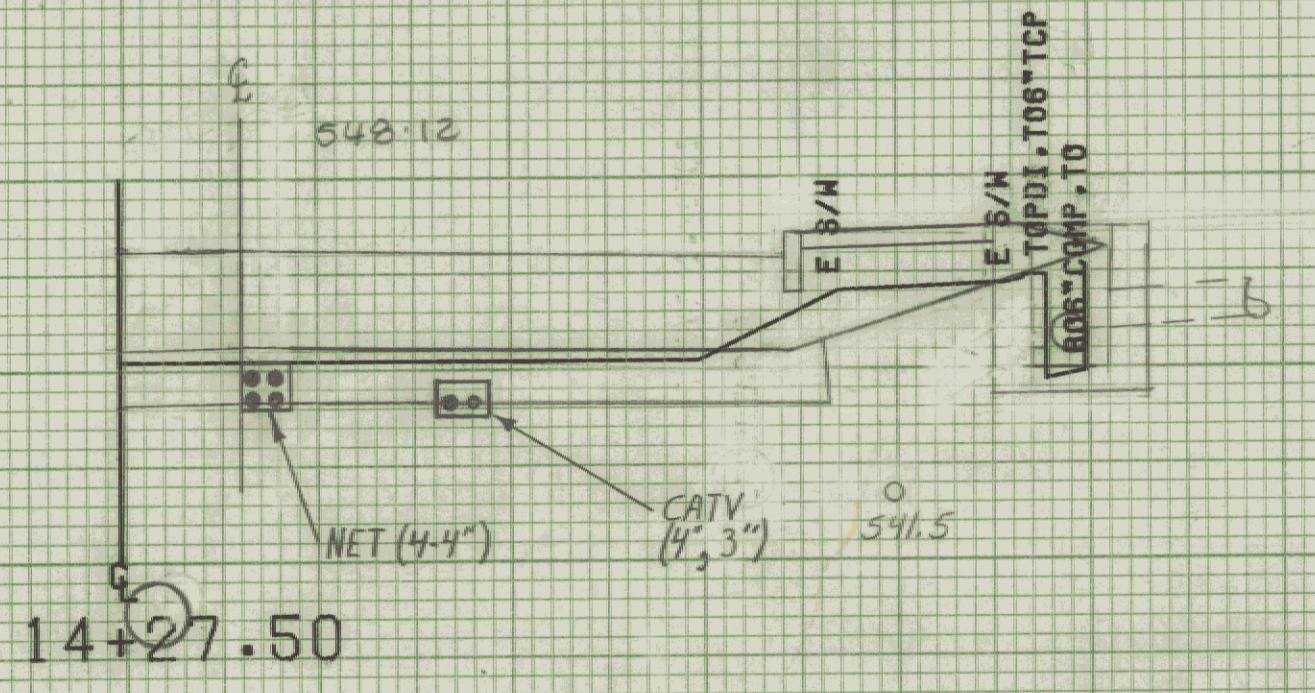
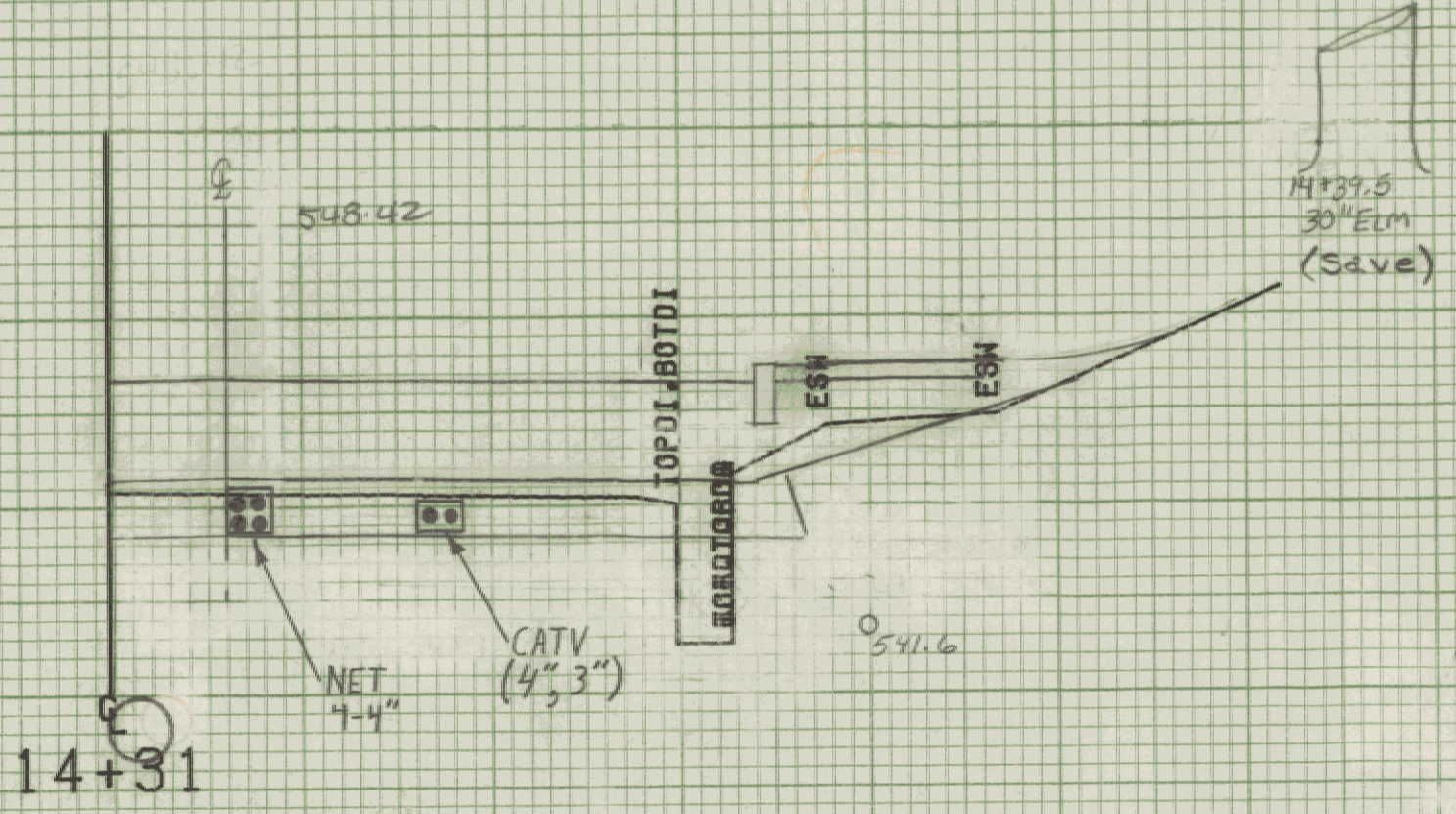


+47
4' LILAC
(Remove)

+40
4' LILAC
(Remove)

+30
1' LILAC
(Remove)

+23
5' LILAC
(Remove)



545

545

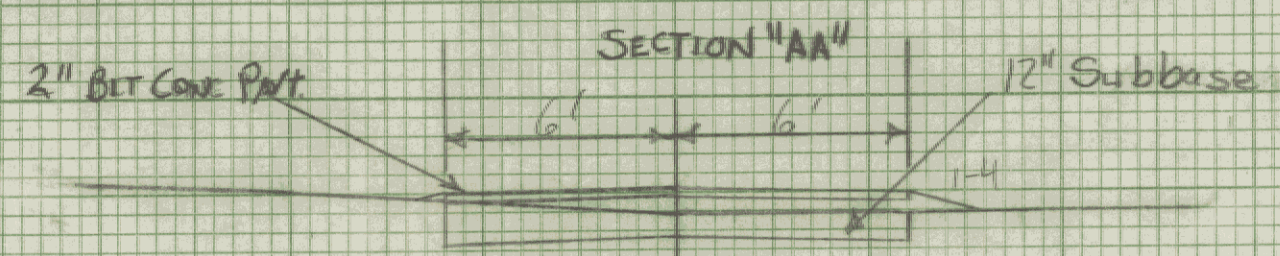
545

540

14+34 RT.
Begin Vertical Granite Curb

14+28 RT ~ 14+50 RT
REMOVE EXISTING D.I.
NEW 12" x 20" CSP, .064 OR CAAP .060
CONNECT 6" COMP INLET TO NEW D.I.
PLUG EXISTING 6" OUTLET

14+23 RT
Construct Drive (12' Wide, Paved)



14+23 RT
CONSTRUCT DRIVE
12' WIDE PAVED

14+18 RT
End Vertical Granite Curb

FROM STA. 14+18 TO STA. 14+31
 PROJECT NAME MONTPELIER MAIN
 NO. M 64-16400(7) PLOTTED 08/07/85
 SURVEYED BY KASTNER-MOREAU JUNE 1985
 SHEET 152 OF 335 SHEETS

SCALE 1" = 5 FEET