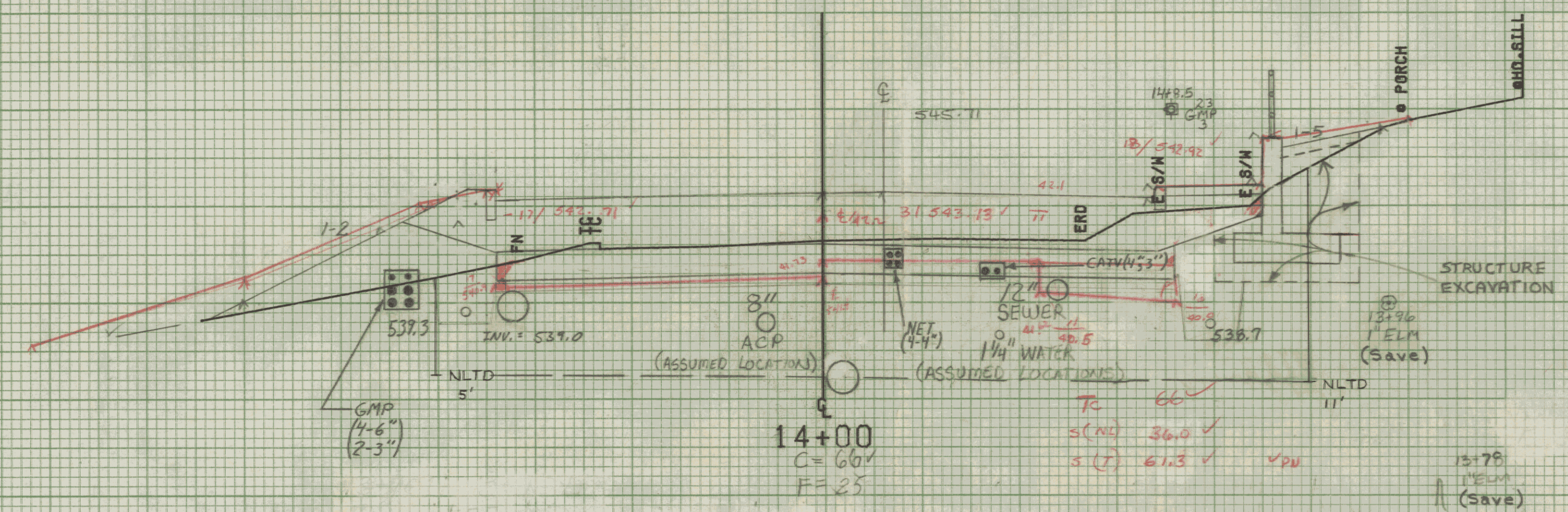
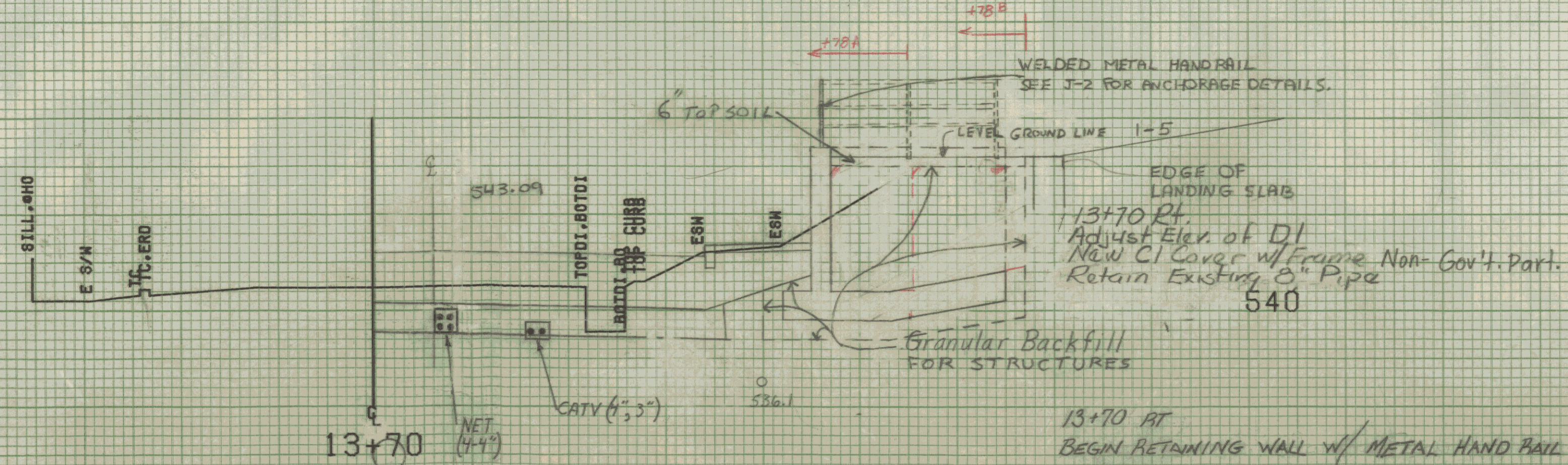


14+15L  
 Adjust Elev. of DI  
 New CI Cover w/ frame (Non-Gov't. Pari.)  
 End New 6" x 50" Underdrain  
 w/ E.B @ 14+15L.

540  
 14+01 RT  
 End Retaining Wall WITH METAL HAND RAIL  
 Butt into existing wall  
 See Retaining Wall details, Sheet  
 END STRUCTURAL EXCAVATION.  
 END TOP SOIL.  
 END GRANULAR BACKFILL FOR STRUCTURES.  
 14+01.50 END METAL HANDRAIL.



540  
 13+77 RT  
 END STAIRWAY #5 FOOTING



Assumed Elev. Existing ground  
 Pre-Cast Pipe DI @ 13+70 80" RT  
 Exact location of this DI to be determined by the Engineer.

13+70 RT  
 BEGIN RETAINING WALL w/ METAL HAND RAIL

13+69 RT  
 Begin Vertical Granite Curb  
 SCALE 6 FEET

FROM STA. 13+70	TO STA. 14+15
PROJECT NAME	MONTPELIER MAIN
NO. M. 64	M6400(7)
SURVEYED BY	MASTNER-MOREAU JUNE 1985
SHEET 151 OF 335 SHEETS	