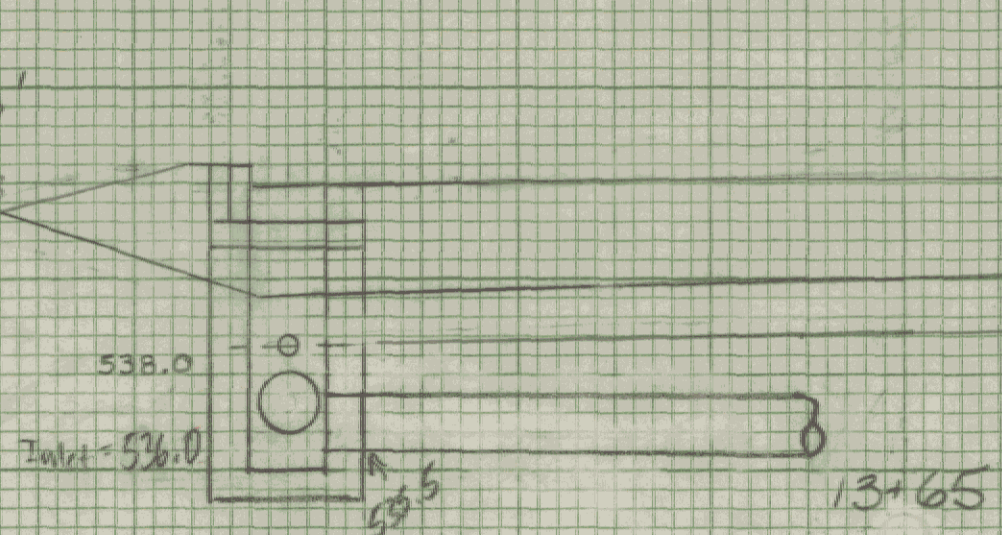
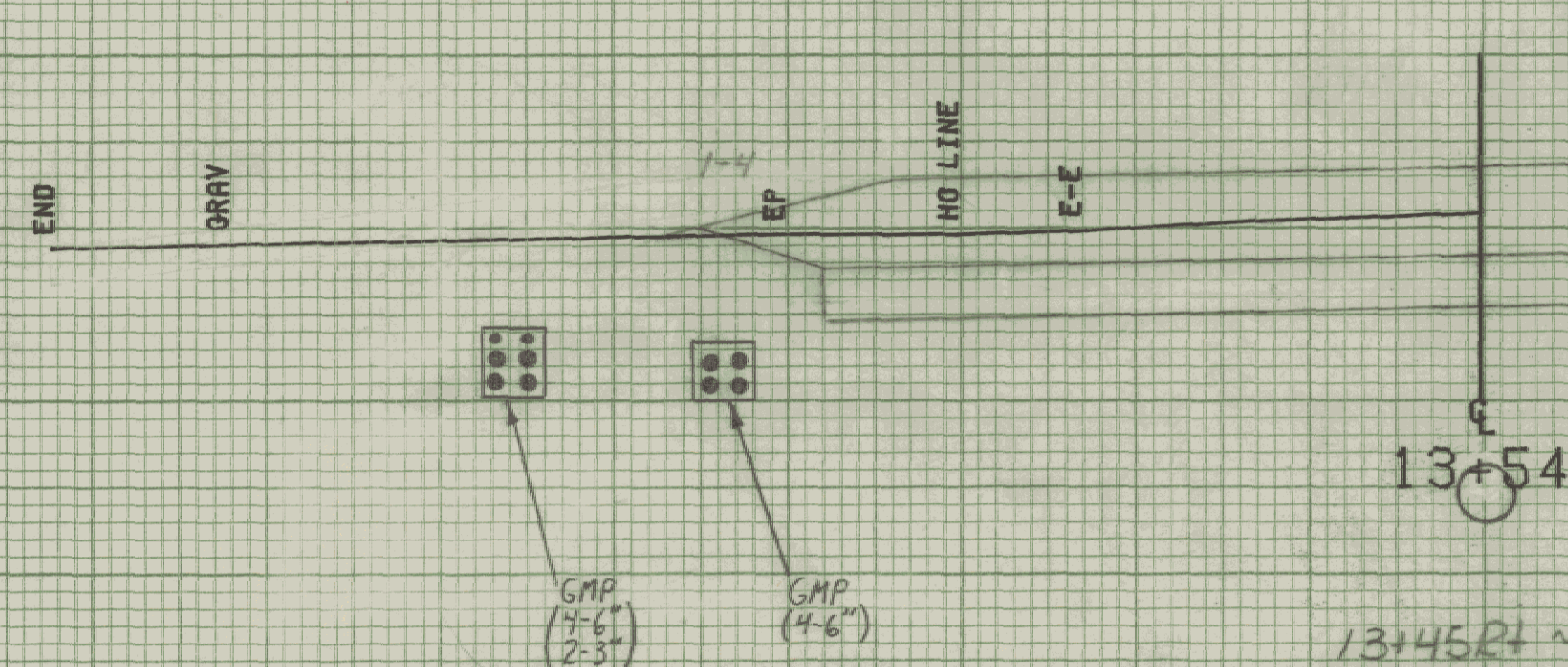


13+65 Lt
 Begin New 15'x86'
 PCCSP, 0.04 or
 CAAP.060

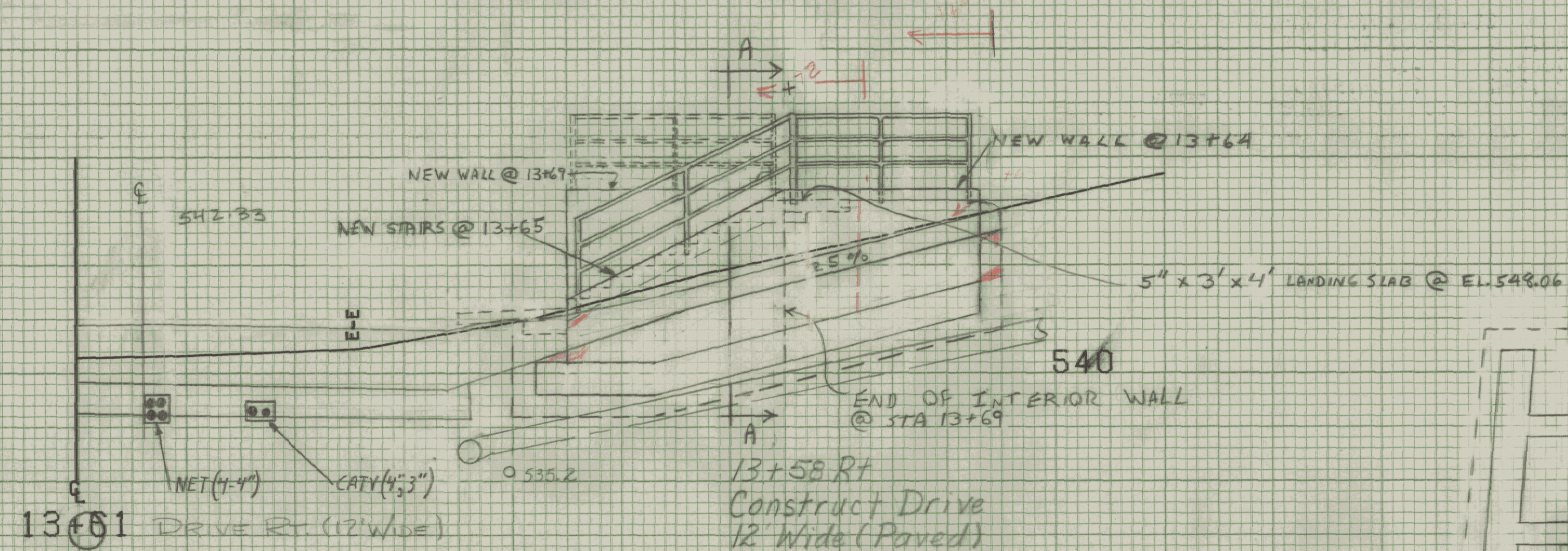


13+65 Lt
 Begin New 6" x 50' Underdrain
 w/ FB @ 14+15 Lt.



13+45 Rt ~ 13+65 Lt
 New 18' x 36' PCCSP .064
 or CAAP.060

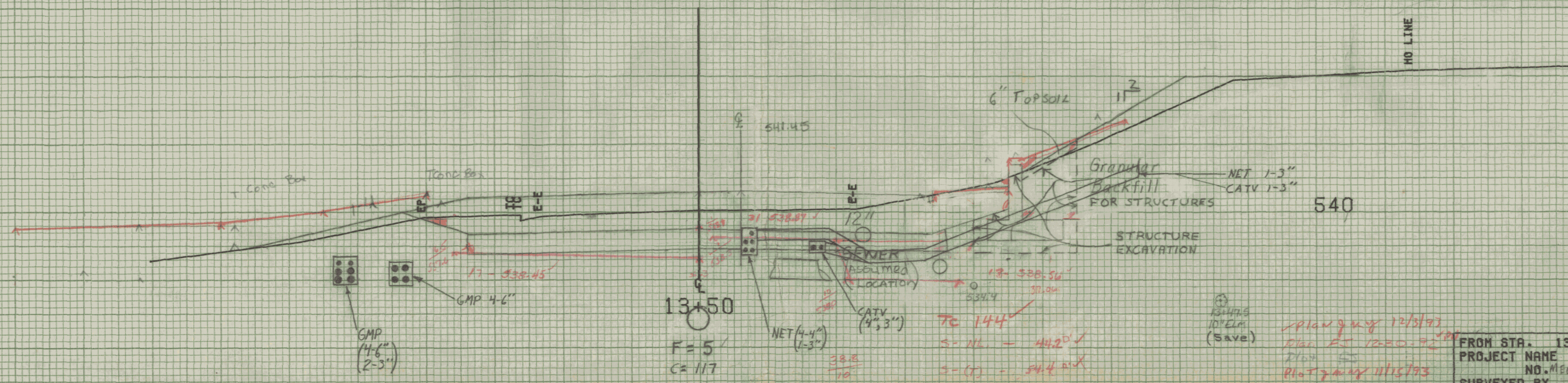
13+64 Rt ~ 13+85 Rt SODDING
 13+64 To 13+70 Rt
 CONSTRUCT CONCRETE STAIRWAY #5
 w/ METAL HAND RAIL.
 EXTEND WALL @ 13+64 19' UP DRIVE



13+45 Rt ~ 13+70 Rt
 New 12' x 74' CSP .064 or CAAP.060
 w/ 2 EL. BONS @ 25° & 35°
 Precast Pipe DE w/ Concrete Cover
 Exact location of DE to be determined by
 the Engineer.

13+52 Rt
 Ext'd Retaining Wall w/ metal handrail

13+47
 End Vertical Granite Curb



FROM STA. 13+50 TO STA. 13+61
 PROJECT NAME MONTPELIER MAIN1
 NO. M66- M6400(7) PLOTTED 08/07/85
 SURVEYED BY KASTNER-MOREAU JUNE 1985
 SHEET 150 OF 335 SHEETS

SCALE 5 FEET