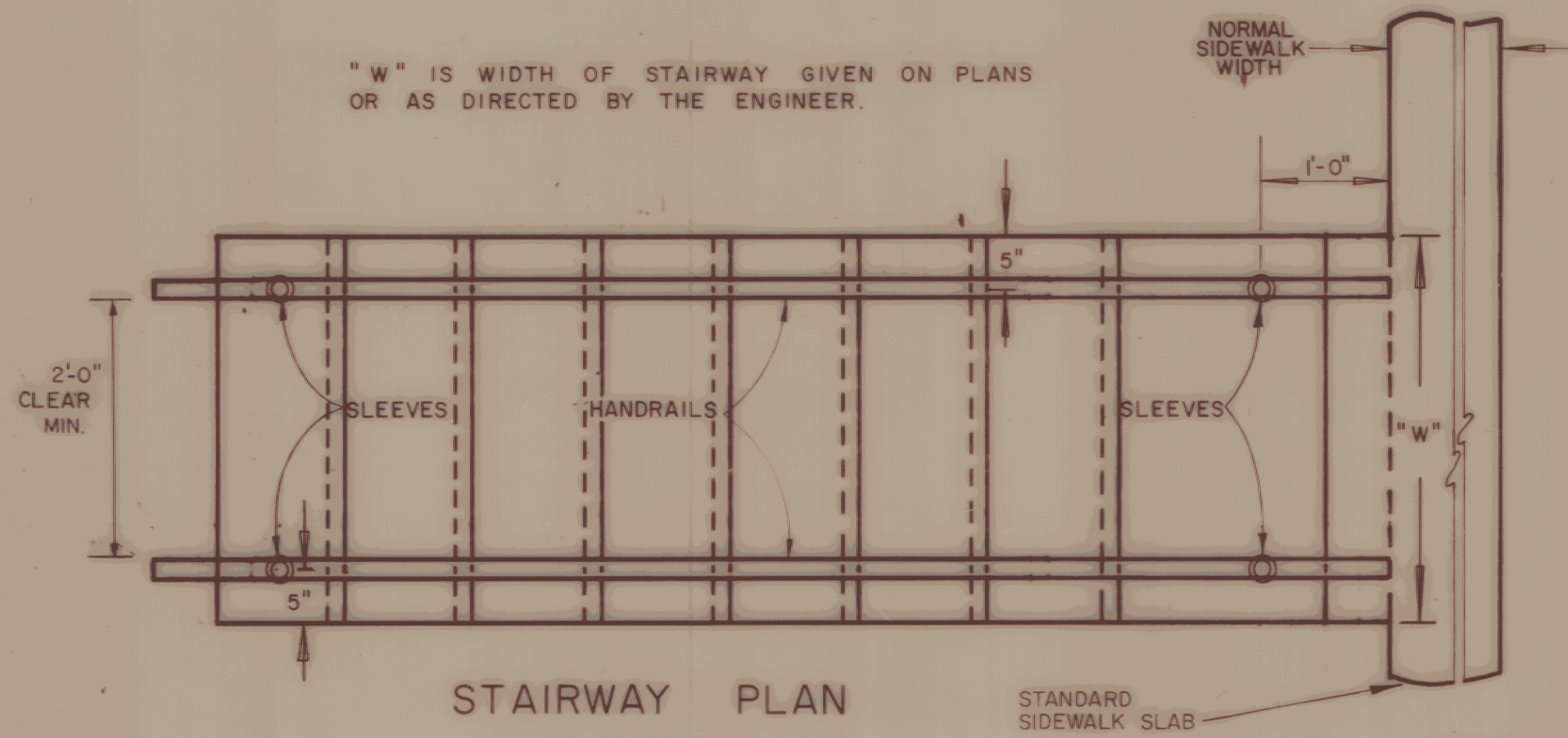


"W" IS WIDTH OF STAIRWAY GIVEN ON PLANS OR AS DIRECTED BY THE ENGINEER.



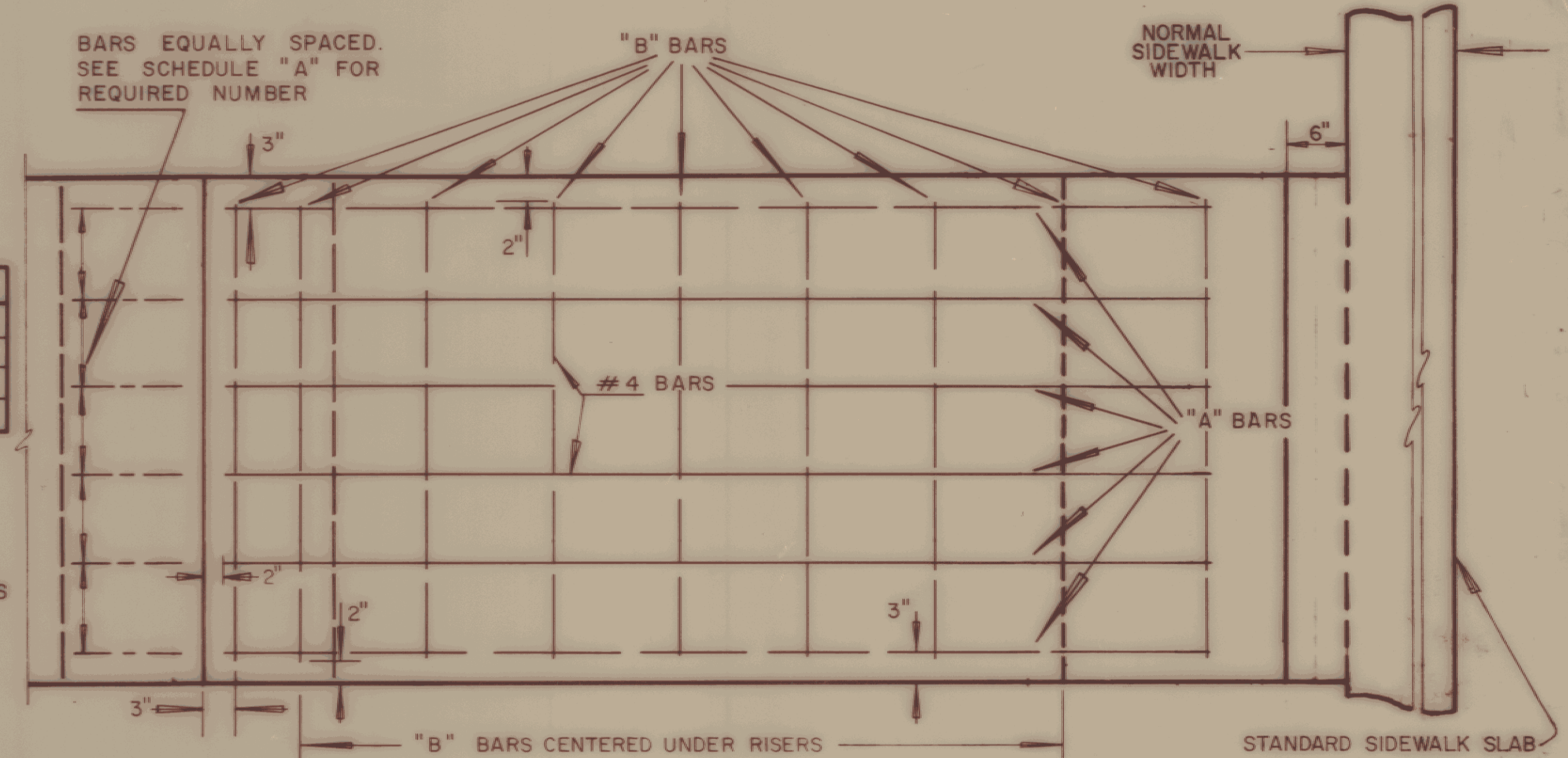
STAIRWAY PLAN

SCHEDULE "A" REINFORCING STEEL

| STAIRWAY WIDTHS | NUMBER OF "A" BARS REQUIRED | | | | | | | |
|-----------------|-----------------------------|-----|-----|-----|-----|------|------|---------|
| | T=1-5 | T=6 | T=7 | T=8 | T=9 | T=10 | T=11 | T=12-18 |
| 3' | NO STEEL | 4 | 5 | 5 | 6 | 6 | 7 | 8 |
| 4' | REQUIRED | 5 | 6 | 7 | 7 | 8 | 9 | 10 |
| 5' | | 6 | 7 | 8 | 9 | 9 | 10 | 11 |

T = THE NUMBER OF TREADS EXCLUDING THE LANDING
THE NUMBER OF "B" BARS IS EQUAL TO THE NUMBER OF RISERS PLUS TWO BARS.

FOR OTHER WIDTHS THE APPROXIMATE SPACING OF "A" BARS IN INCHES WILL BE EQUAL TO $80 \div T$ WITH A MINIMUM SPACING OF 6 INCHES



STEEL PLAN

ALL REINFORCING STEEL SHALL BE NO. 4 BARS

CONCRETE CLASS B CUBIC YARDS

| NO. RISERS | WIDTH | | | HAND-RAIL LF |
|------------|-------|------|------|--------------|
| | 3' | 4' | 5' | |
| 1 | 0.41 | 0.55 | 0.69 | 7 |
| 2 | 0.50 | 0.68 | 0.85 | 9 |
| 3 | 0.60 | 0.80 | 1.00 | 11 |
| 4 | 0.69 | 0.92 | 1.16 | 13 |
| 5 | 0.78 | 1.05 | 1.31 | 15 |
| 6 | 0.88 | 1.17 | 1.47 | 17 |
| 7 | 0.97 | 1.30 | 1.63 | 19 |

NOTE: FOR STAIRWAY WITH INTERMEDIATE LANDING, ADD THE FOLLOWING CONCRETE VOLUMES:

| WIDTH | CY. |
|-------|------|
| 3' | 0.17 |
| 4' | 0.22 |
| 5' | 0.28 |

GENERAL NOTES

WHEN SLOPES FLATTER THAN 1-2 ARE ENCOUNTERED, LANDINGS WILL BE INTRODUCED IN THE STAIRWAY AT SUCH INTERVALS AND DIMENSIONS AS SHOWN ON THE PLANS OR AS DIRECTED BY THE ENGINEER. THERE SHALL BE NO MORE THAN 18 RISERS OR LESS THAN 3 RISERS BETWEEN ANY TWO SUCCESSIVE LANDINGS.

RISERS MAY VARY FROM 5" TO 6" AS DIRECTED BY THE ENGINEER, BUT ALL RISERS IN A STAIRWAY SHALL BE THE SAME HEIGHT.

TREADS MAY VARY FROM 9" TO 12" OR AS DIRECTED BY THE ENGINEER, SUCH THAT THE STAIRWAY SLOPE FORMS AN ANGLE WITH THE HORIZONTAL OF 25° TO 30°. ALL TREADS IN A STAIRWAY SHALL BE THE SAME DIMENSION.

ALL WELDED JOINTS SHALL BE FINISHED BY GRINDING OR FILING TO GIVE A NEAT APPEARANCE.

RAIL TO BE PAINTED BLACK AFTER ERECTION.

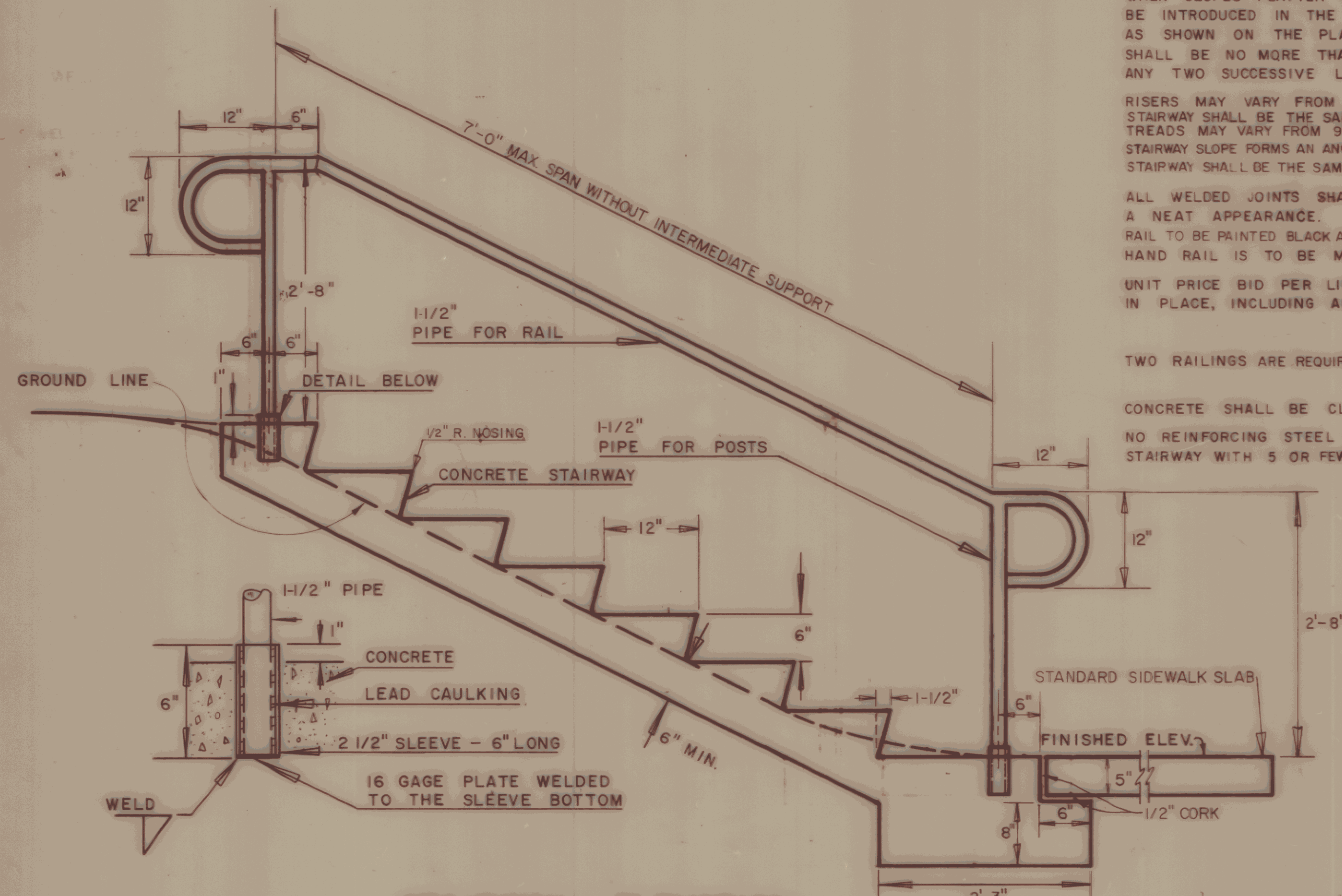
HAND RAIL IS TO BE MEASURED ALONG THE TOP RAIL.

UNIT PRICE BID PER LINEAL FOOT IS TO BE FOR HAND RAIL COMPLETE IN PLACE, INCLUDING ALL HARDWARE, WELDING AND PAINTING.

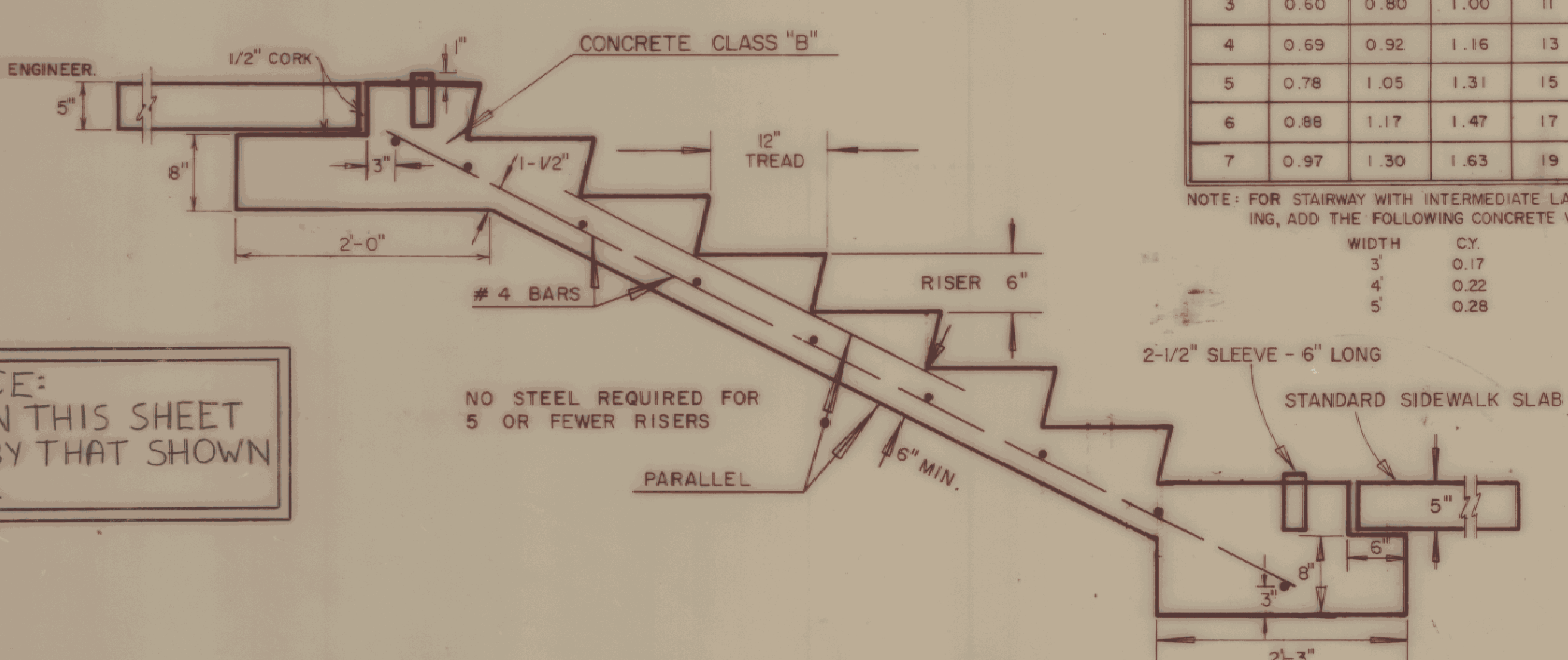
TWO RAILINGS ARE REQUIRED FOR ALL STAIRS.

CONCRETE SHALL BE CLASS "B", OR AS DIRECTED BY THE ENGINEER.

NO REINFORCING STEEL WILL BE REQUIRED FOR A STAIRWAY WITH 5 OR FEWER TREADS.



STAIRWAY ELEVATION (WITHOUT INTERMEDIATE LANDING)



STEEL ELEVATION (WITH INTERMEDIATE LANDING)

NOTICE: INFORMATION ON THIS SHEET IS PRECEDED BY THAT SHOWN ON THE PLANS.

BRIDGE SHEET 10 of 10 SHEET 112 of 335

REVISIONS AND CORRECTIONS
 JAN. 23, 1975 - REDESIGN OF CONNECTION OF STAIRS TO WALK.
 OCT. 30, 1980 - REVISED TREAD AND HANDRAIL DETAILS.
 AUG. 21, 1981 - MIN CLEAR WIDTH BETWEEN HANDRAILS ADDED, MINOR NOTE CLARIFICATIONS.

APPROVED: DATE Dec. 14, 1971
R. W. Arnold
 CHIEF ENGINEER
E. W. Stinchey
 ASST. CHIEF ENGINEER
G. M. Lane
 HIGHWAY ENGINEER

DRAWN R.F.N.
 TRACED GUS AJA

STANDARD CONCRETE STEPS
 METAL HAND RAILING

563



STANDARD
 J-2