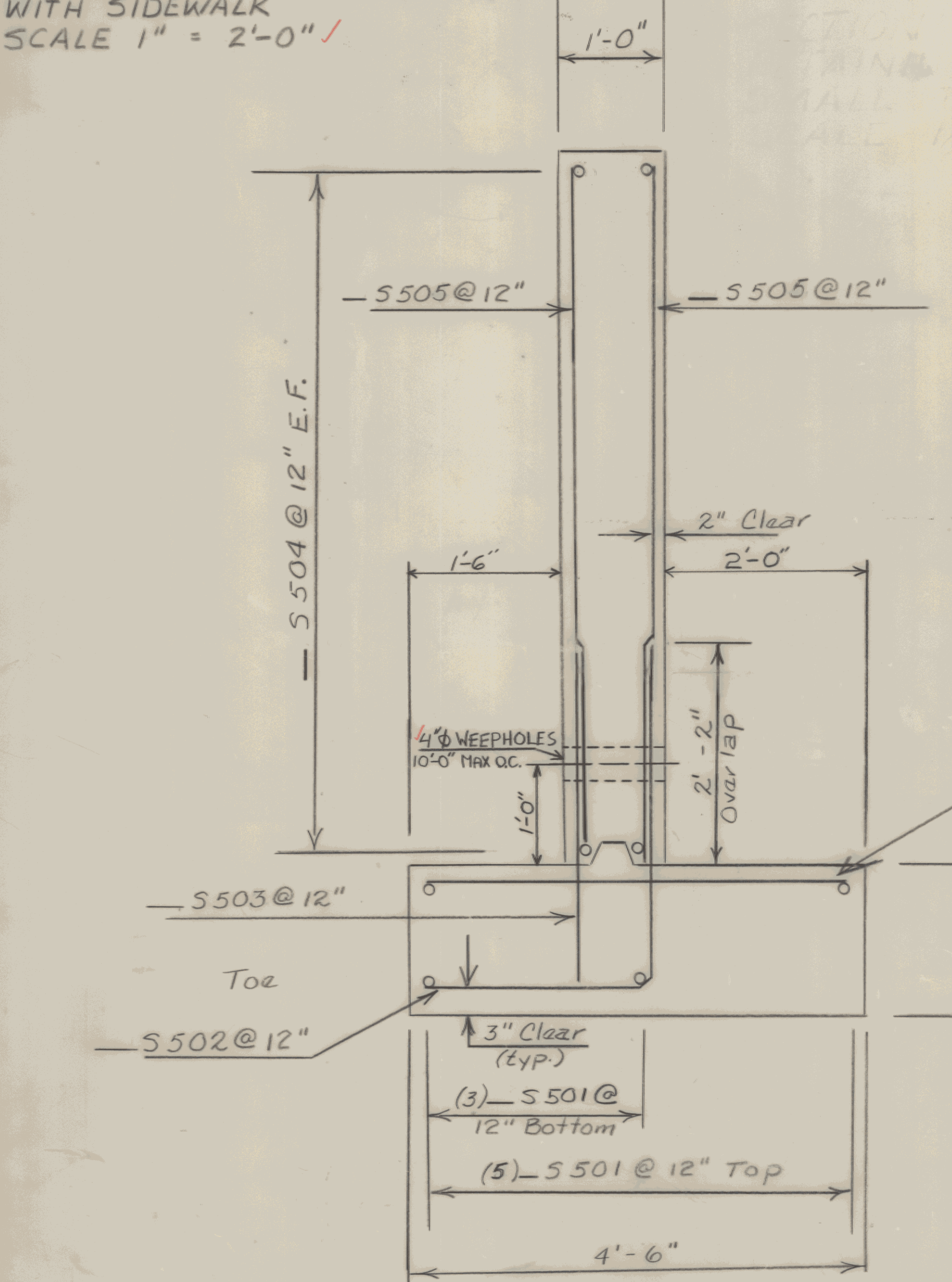
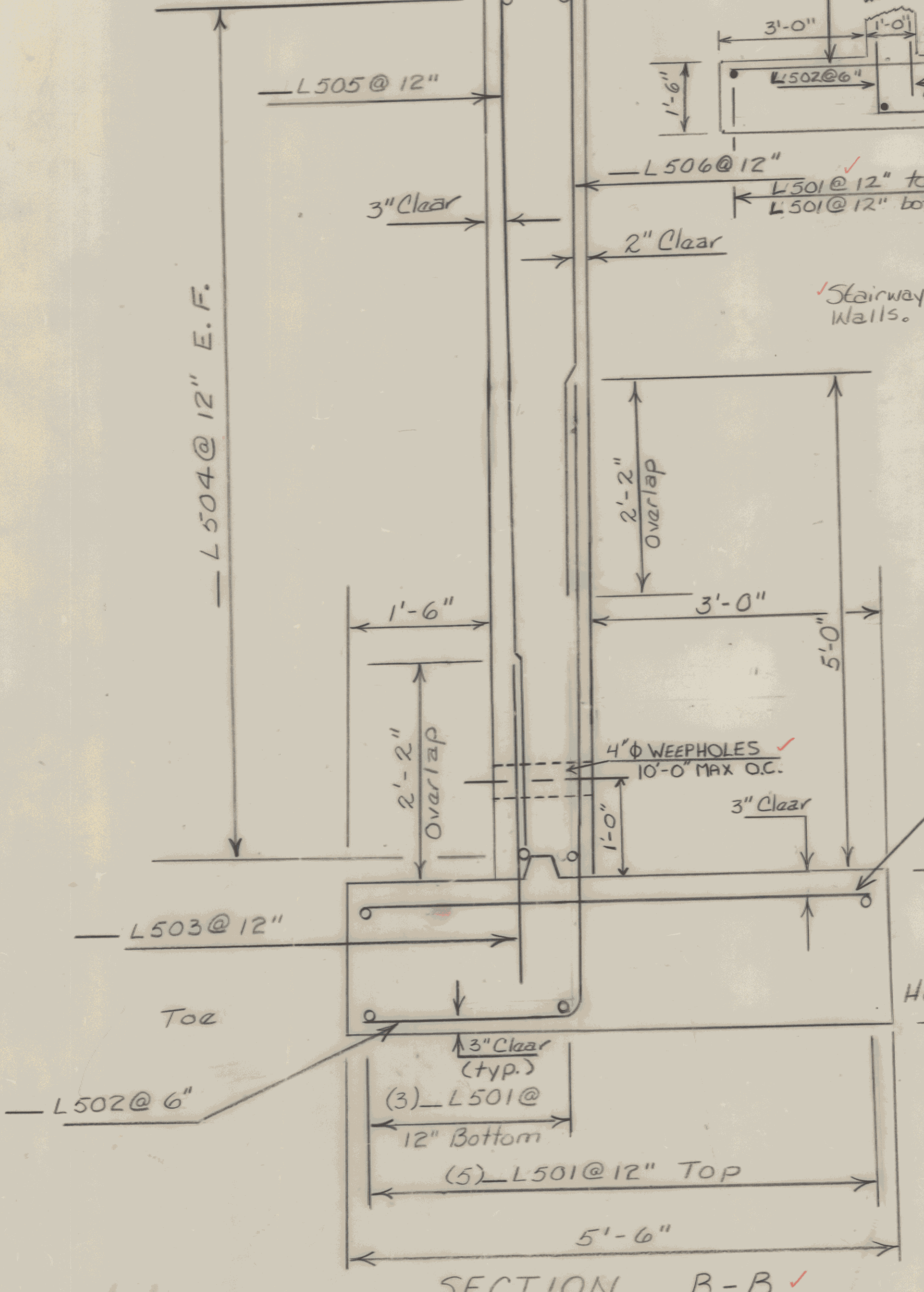


TYPICAL DRIVE CONSTRUCTION WITH SIDEWALK
SCALE 1" = 2'-0" ✓



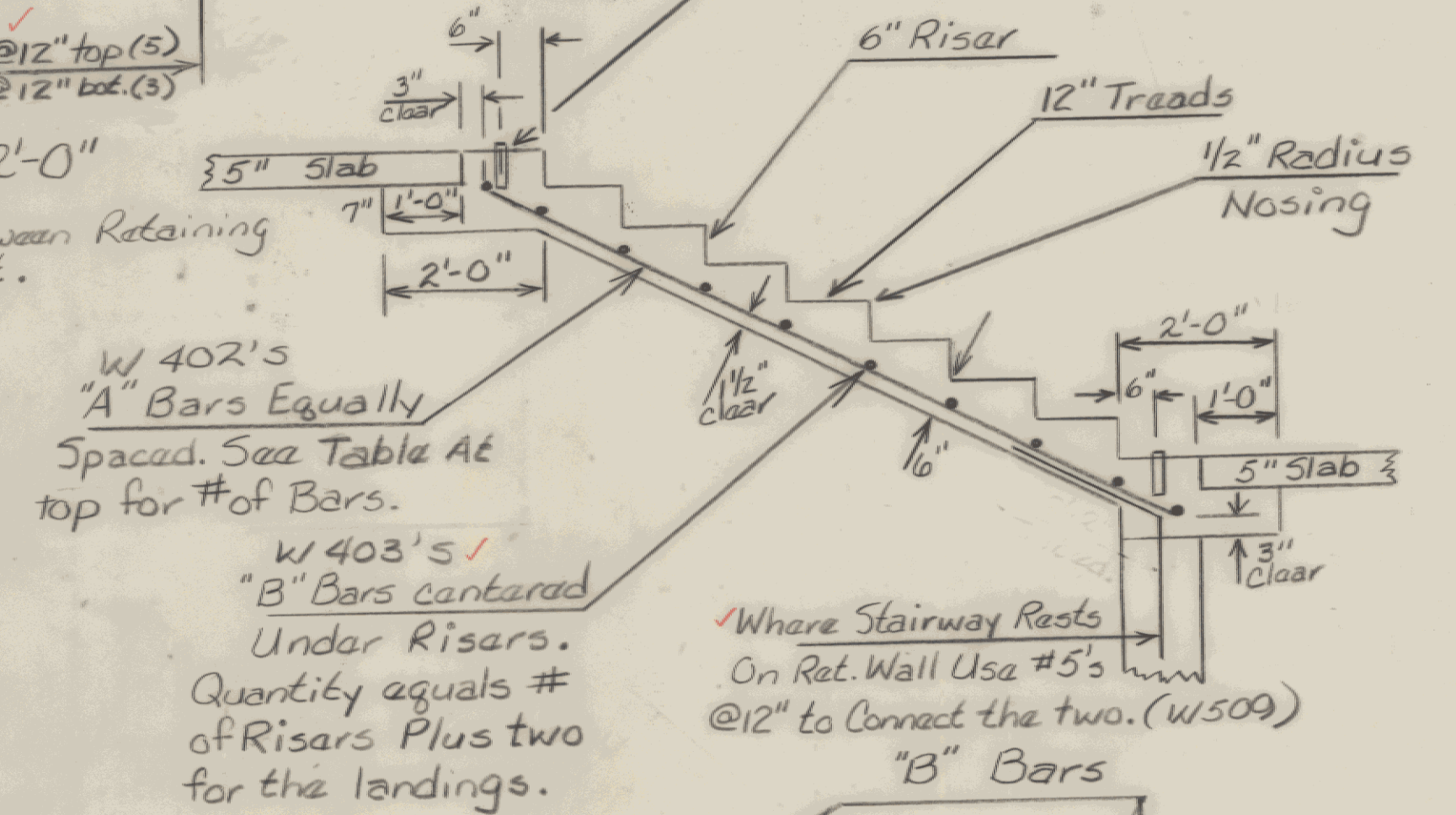
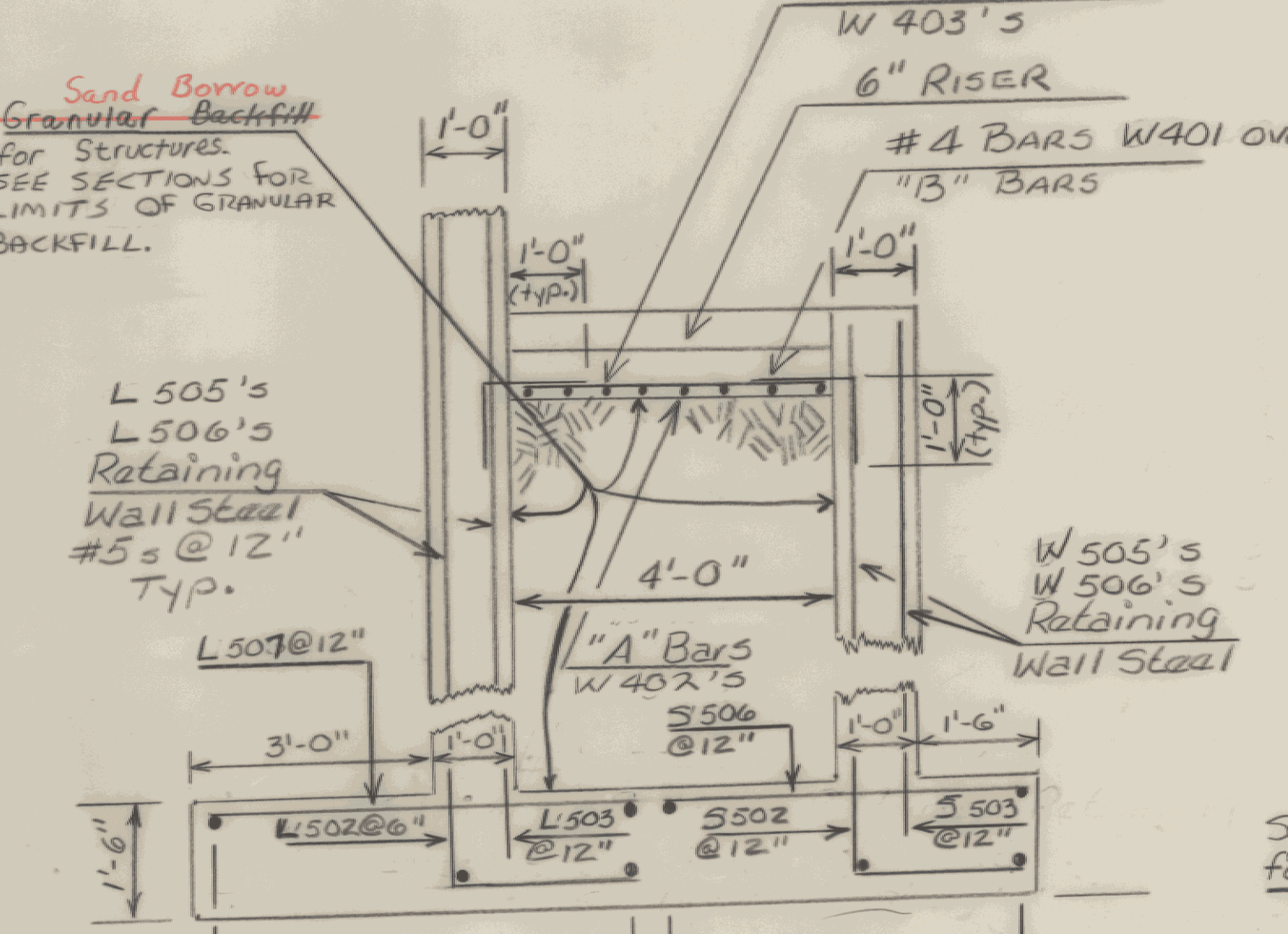
SECTION A-A ✓
RETAINING WALL, SMALL FOOTING
SCALE 1" = 1'-0"



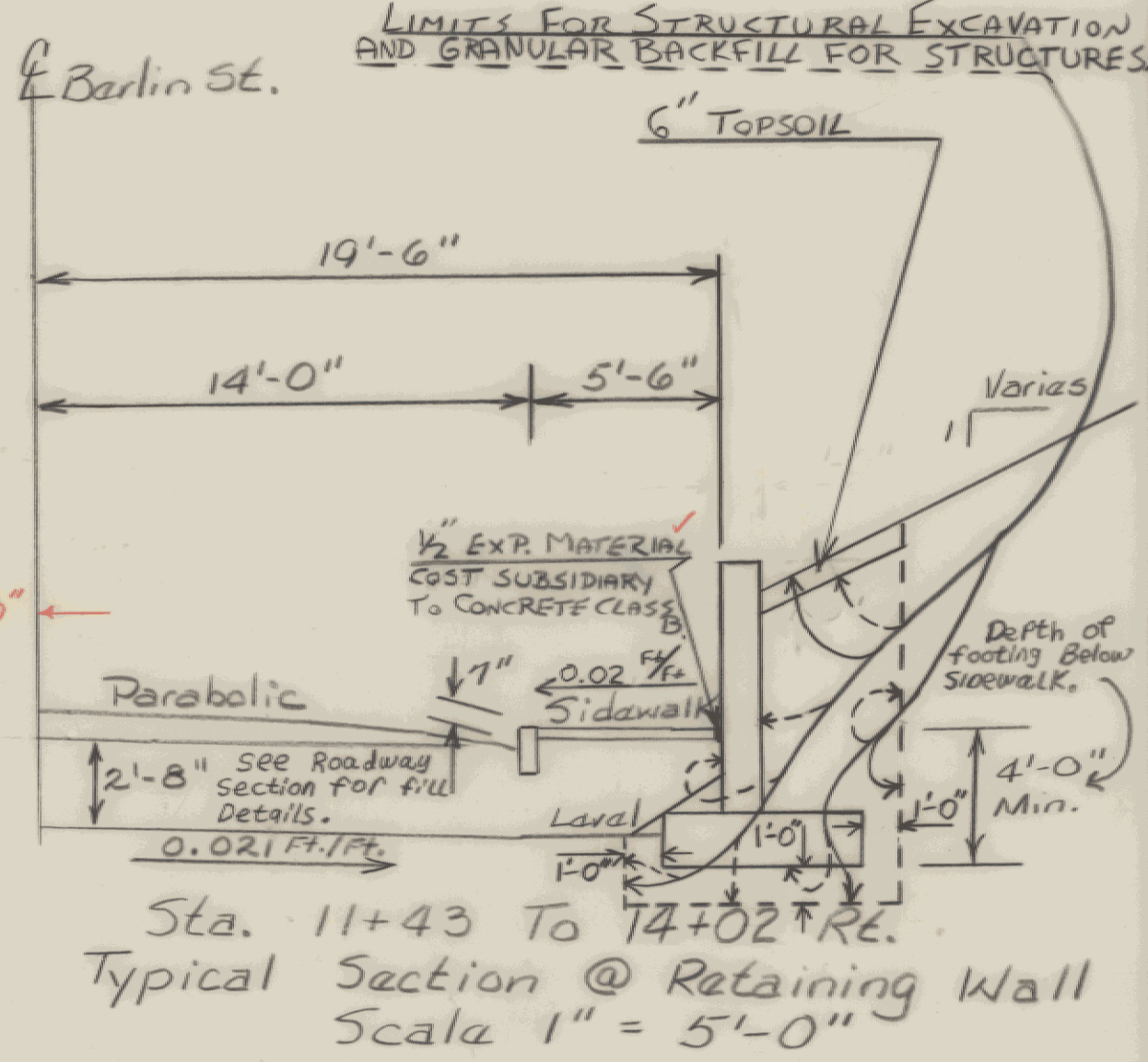
SECTION B-B ✓
RETAINING WALL, LARGE FOOTING
SCALE 1" = 1'-0"

| Stairway Widths | Number of "A" Bars Required | | | | | | | | |
|-----------------|-----------------------------|-------|-----|-----|-----|------|------|------|---------|
| | T=1 to 4 | T=5-6 | T=7 | T=8 | T=9 | T=10 | T=11 | T=12 | T=13-15 |
| 3' | No. Spaced | 4 | 5 | 5 | 6 | 6 | 7 | 7 | 8 |
| 4' | Spaced | 5 | 6 | 7 | 7 | 8 | 8 | 9 | 10 |
| 5' | Spaced | 6 | 7 | 8 | 9 | 9 | 10 | 11 | 12 |

T = # of Treads Excluding Landings
Refer Also To Standard J-2, Sheet # 112.
"B" BAR UNDER RISER



NOTE: Information on this sheet precedes details shown on Standard J-2 (Sheet 10 of 10.)



STATE OF VERMONT AGENCY OF TRANSPORTATION

Town Of Montpelier Bridge No. _____
 Highway No. Berlin St. Log Sta. _____
 Supv. Sta. _____

Typical Sections And Stairway Rebar layout.

Designed By P. Provost Drawn By rmw
 Checked By P.E. PROVOST Date 7/89 Bridge Design Supervisor R.P. Gardner Date 7/89

PROJECT Montpelier-Berlin St. PROJECT NO. MEGC M6400(7)
 I.G.C. Info. N/A

Bridge Sheet No. 4 of 10 Sheet 106 of 335