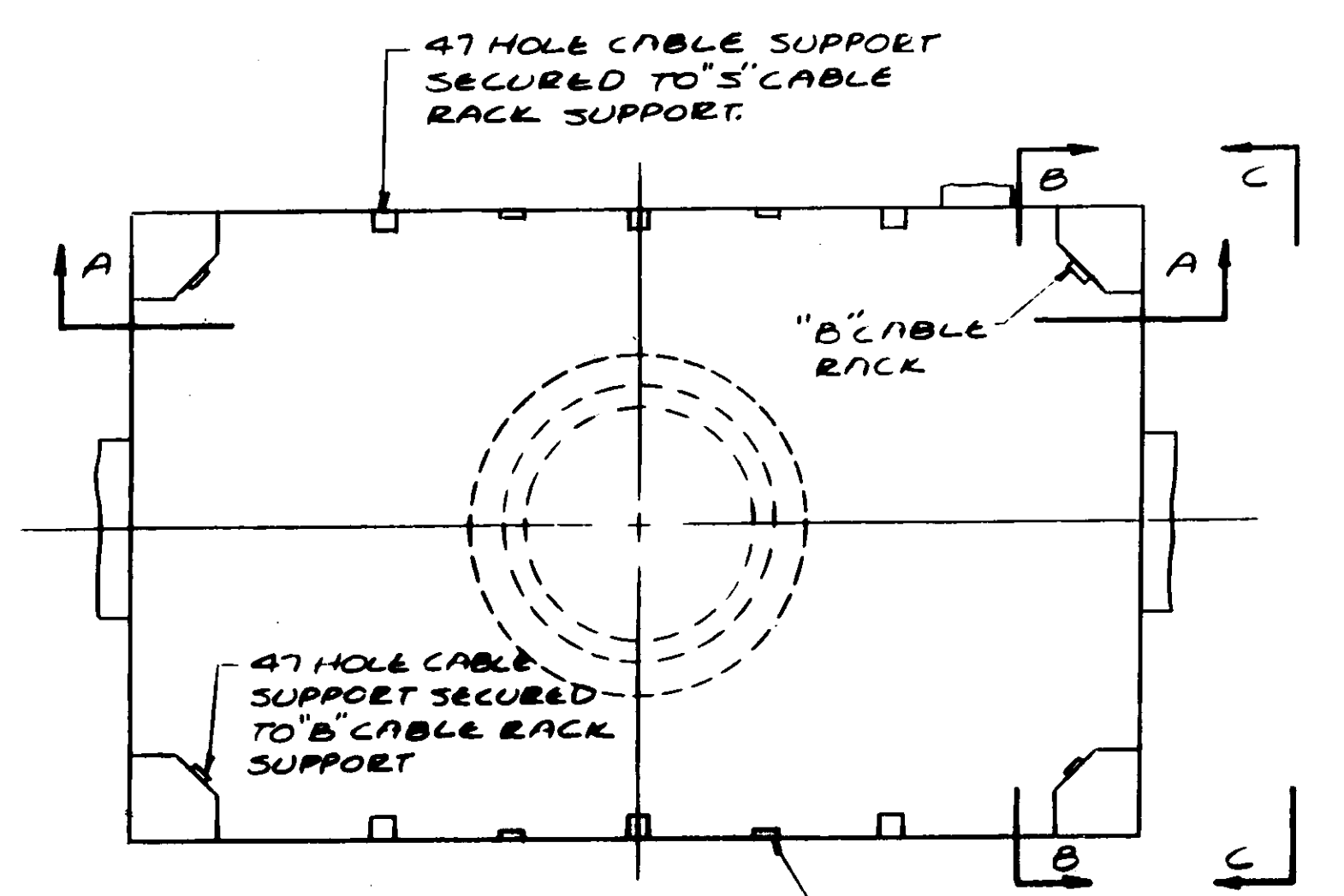
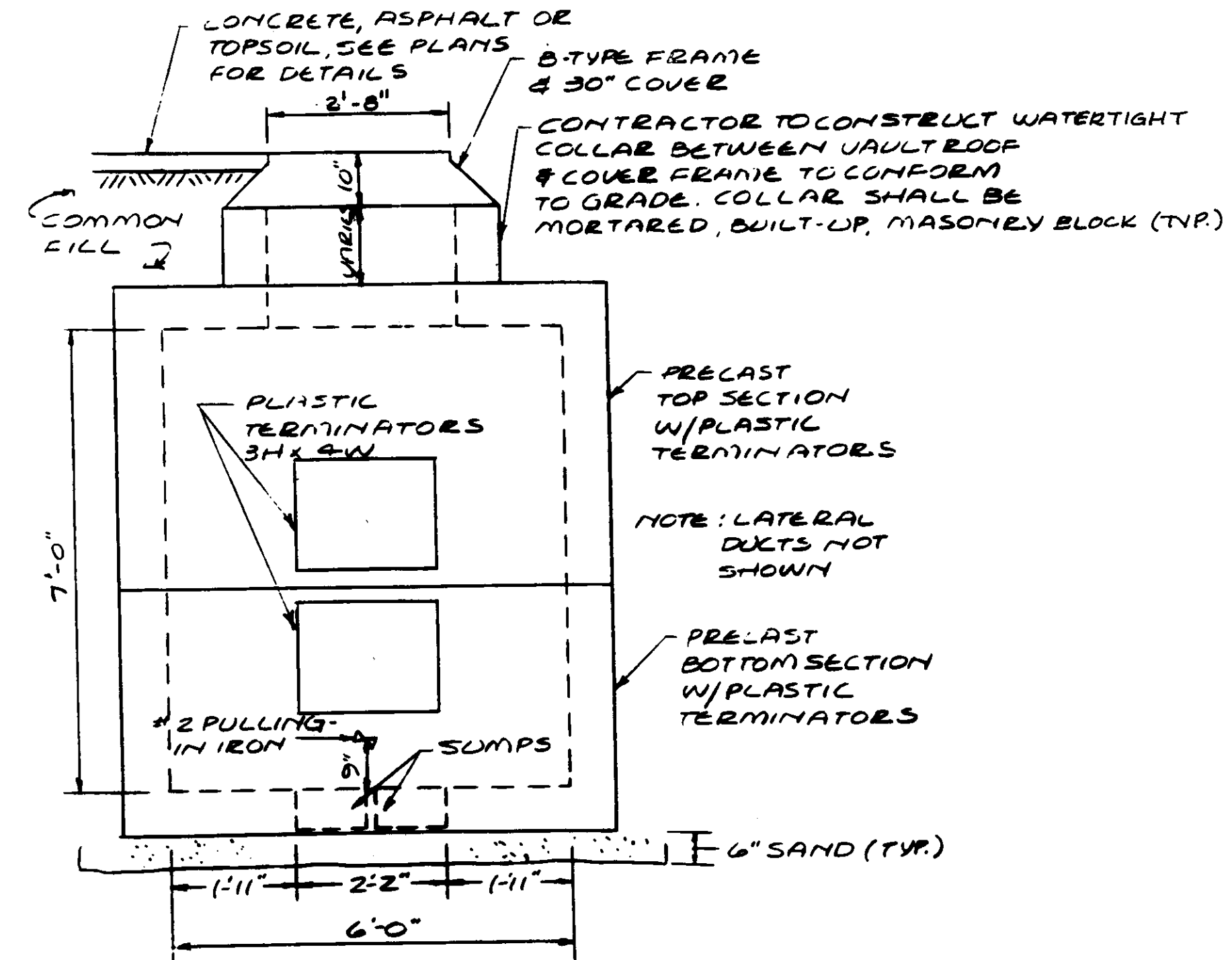


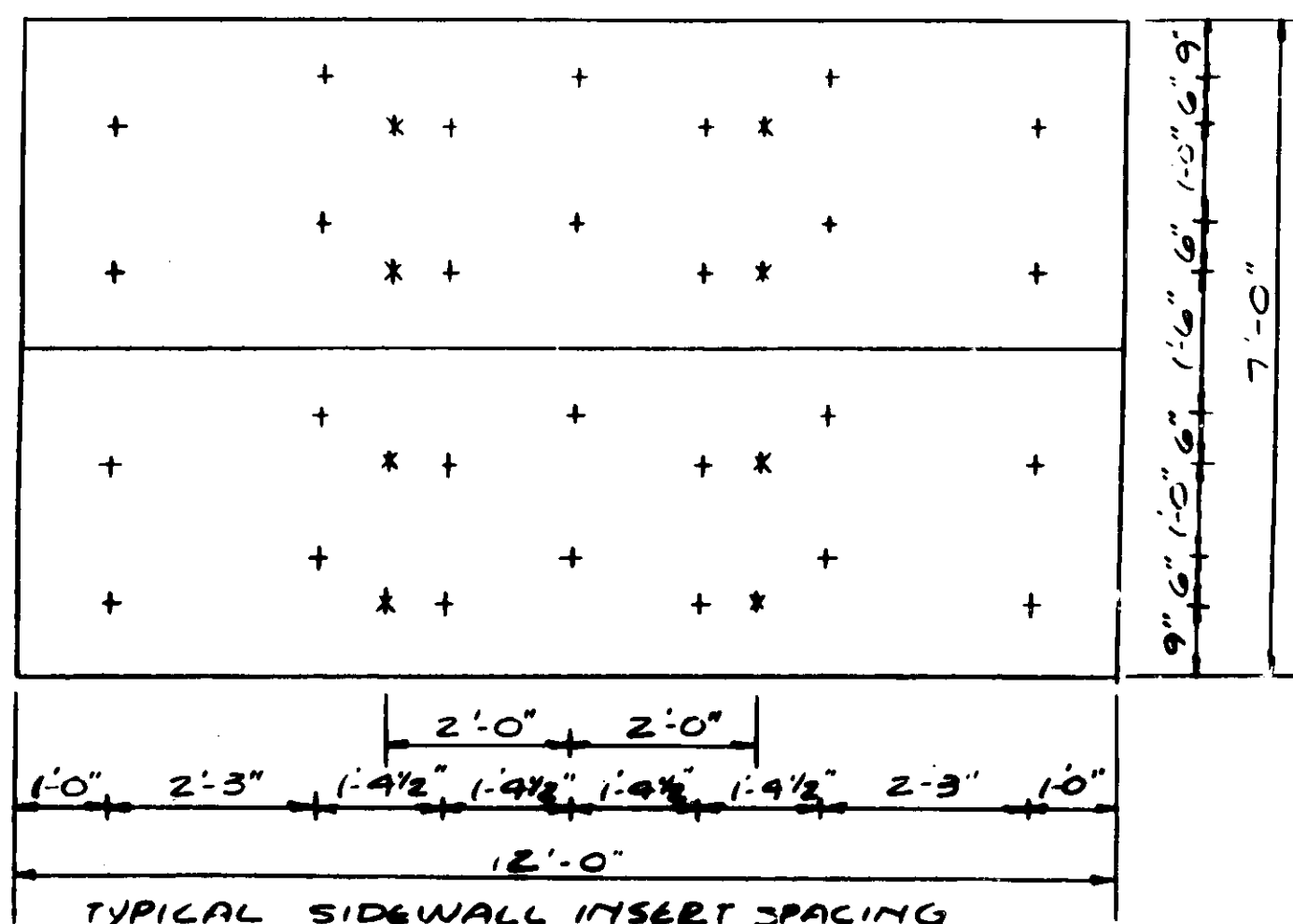
PLAN - GMP PRECAST VAULTS
N.T.S.



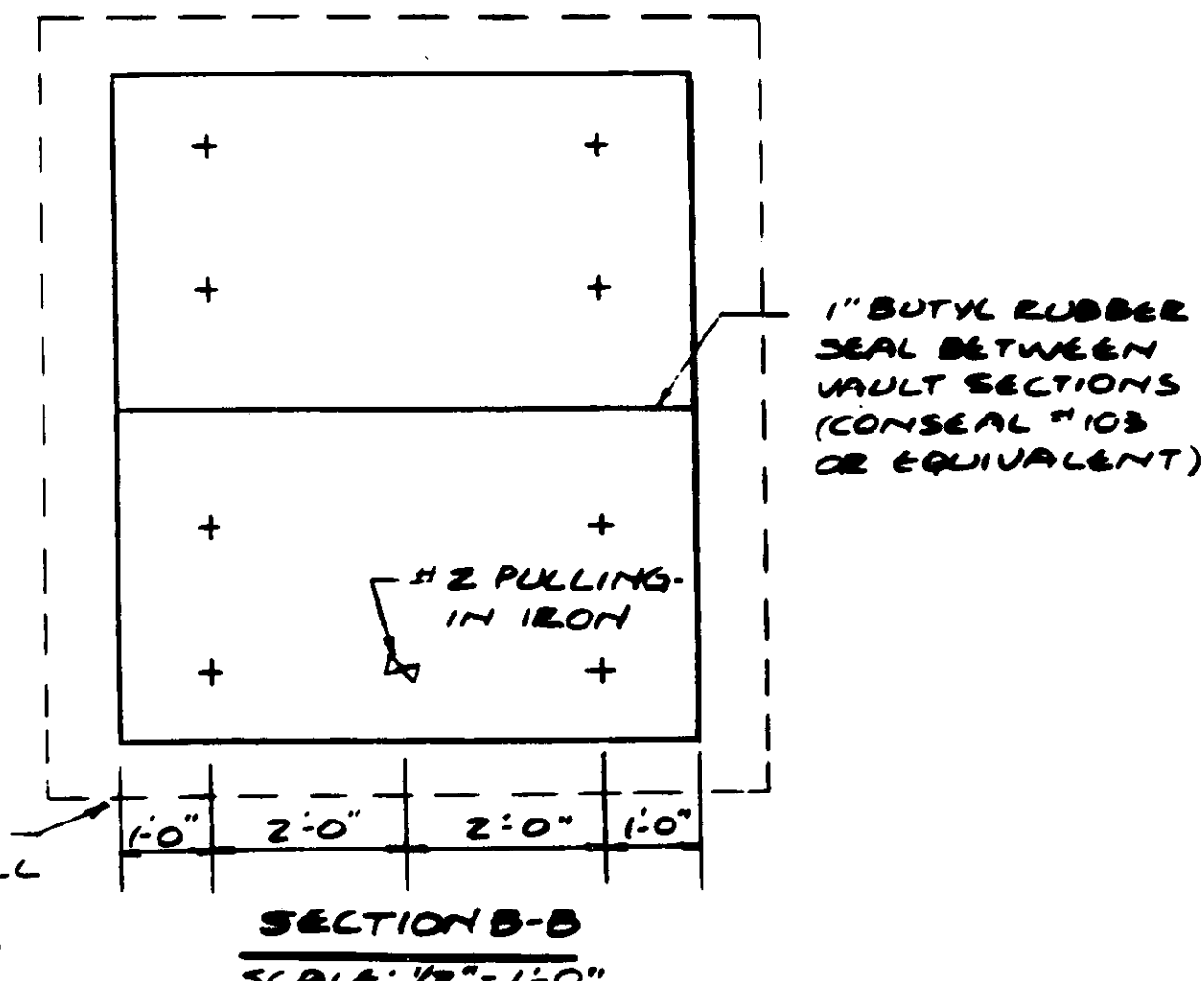
PLAN TYPICAL RACKING DETAIL FOR NET PRECAST
SCALE: 1/2" = 1'-0"



ELEV. C-C - TYPICAL END WALL FOR NET VAULT
SCALE: 1/2" = 1'-0"

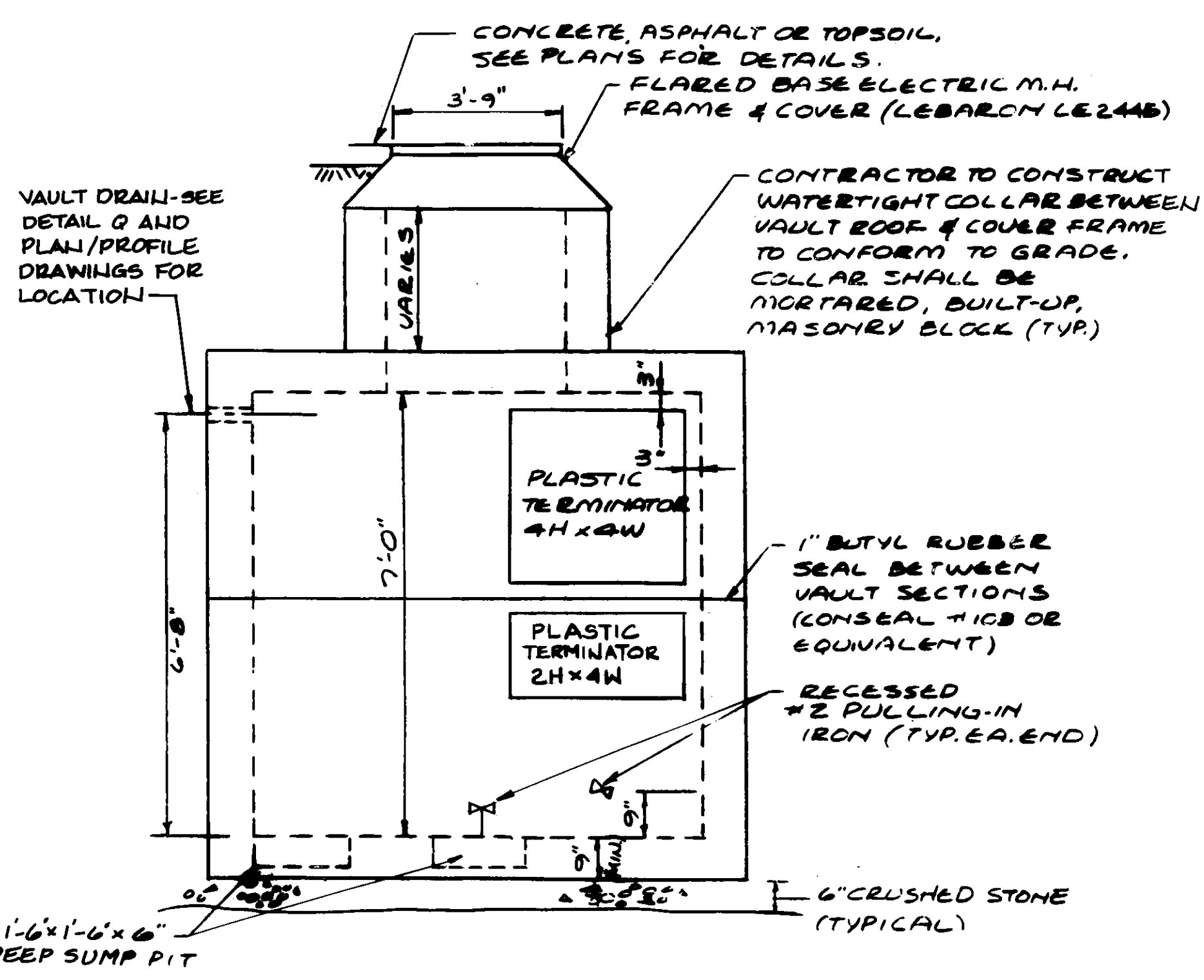


SECTION A-A
SCALE: 1/2" = 1'-0"

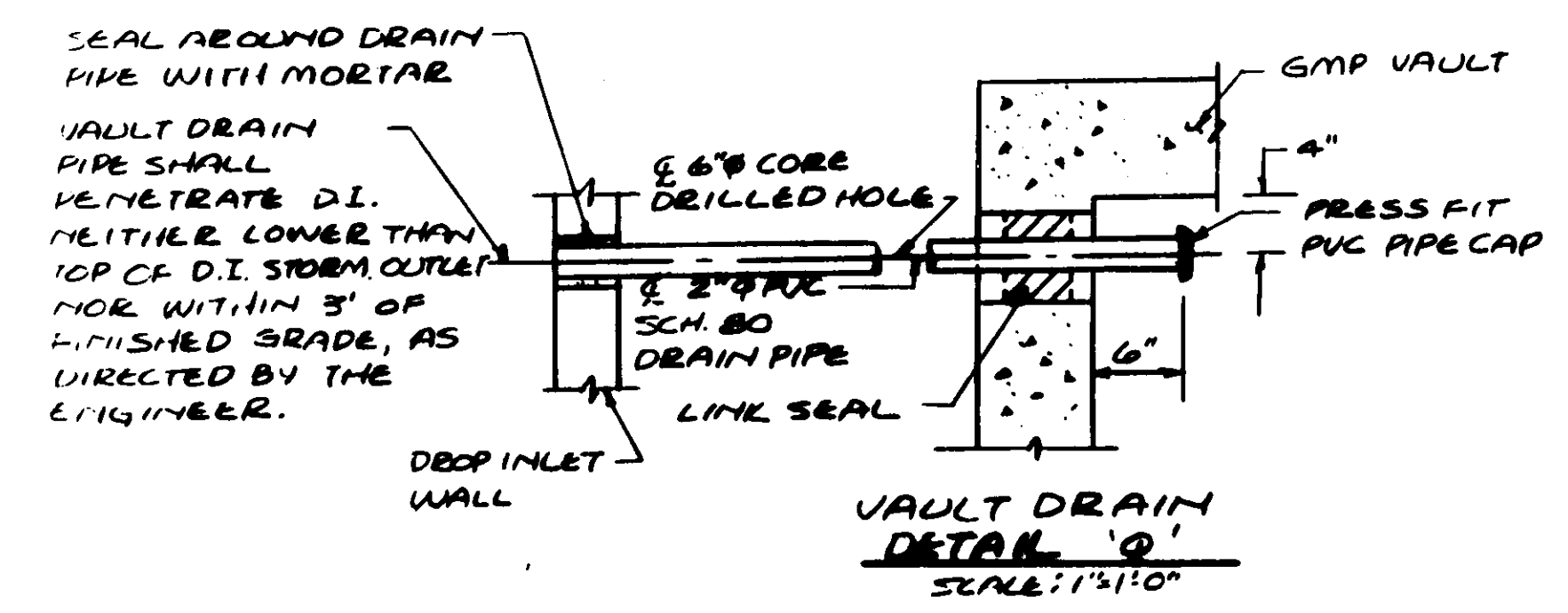


SECTION B-B
SCALE: 1/2" = 1'-0"

+ = 1/2" CONCRETE INSERT
* = 1/4" x 20 CONCRETE INSERT FOR BONDING RIBBON



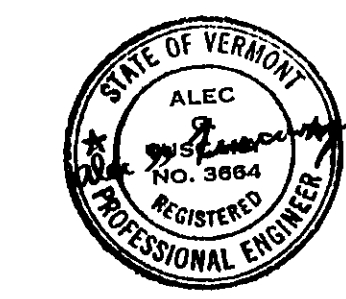
ELEVATION D-D GMP PRECAST VAULT
SCALE: 1/2" = 1'-0"



VAULT DRAIN DETAIL
SCALE: 1/4" = 1'-0"

NET NOTES:
MATERIAL REQUIRED FOR EACH NET MANHOLE
 (1-50V-4096-1 PRECAST MANHOLE (TOP & BOTTOM SECTION) EQUIPPED WITH:
 50 - PLASTIC DUCT TERMINATORS
 2 - 2" MANHOLE SUMPS
 2 - #2 PULLING-IN IRONS
 16 - 1/4" x 20 CONCRETE INSERTS
 72 - 1/2" CONCRETE INSERTS
 10" TYPE FRAME & COVER
 12 - 47 HOLE CABLE SUPPORTS
 16 - D CABLE RACK SUPPORTS
 24 - 3 CABLE RACK SUPPORTS
 1 - 8' STRAIGHT LADDER
 BONDING RIBBON (20')
 72 - 1/2" x 1 3/4" BOLT
 40 - 1/2" x 2 1/2" BOLT
 40 - 3/4" MACHINE NUT
 56 - 3/16" x 1 1/4" FLAT ROUND WASHER
NOTE:
 ALL BOLTS, NUTS & WASHERS ARE MACHINE THREADED & GALVANIZED.

- NOTES:**
1. WATERPROOF DUCT PLUGS ARE TO BE USED IN ALL DUCTS.
 2. MEMBRANES ARE TO BE BROKEN OUT ON ALL TERMINATORS WHICH ARE CONNECTED TO DUCTS.
 3. ALL PRECAST NET MANHOLES SHALL BE CONSTRUCTED IN ACCORDANCE WITH A T STANDARDS - BELL LAB DRAWINGS ED 17000-01 THRU ED 17007-01 AND PURCHASED FROM AN APPROVED NET SUPPLIER PRECAST MANHOLES.
 4. JOINTS BETWEEN PRECAST SECTIONS SHALL BE WATER-TIGHT.
 5. ALL VAULTS SHALL RESIST BUOYANCY FOR MAX. WATER TABLE AT FINISHED GRADE.
 6. ALL VAULTS SHALL BE DESIGNED FOR HS-20 LOADING
 7. ALL VAULTS SHALL BE DESIGNED FOR MAX. SOIL PRESSURE USING HIGH WATER TABLE AT FINISHED GRADE.



CITY OF MONTPELIER
 BERLIIH STREET RESTORATION PROJECT
 GMP AND NET VAULT DETAILS

MONTPELIER, VERMONT

Client No.	618040
Proj. Manager	A. TUSCANY
Proj. Designer	J. MYERS
Drawn By	J.E. SHATNEY
Checked By	L.B. LACKEY
Scale	AS SHOWN
Approved	
Date	27 NOV. 1990

Sheet 10 of 305
 Sheet 4 of 7
 D 618040-04

Rev.	Description	By	Date
1	INCREASE GMP ON PG. TO 3'-9"	JTM	6/18/92
2	ADD FLOOR PULLING-IN IRON (GMP)	JTM	6/15/92
3	RELOCATE GMP SUMP	JTM	6/15/92
	ADD 2H x 4W TERMINATOR (GMP)	JTM	6/18/92