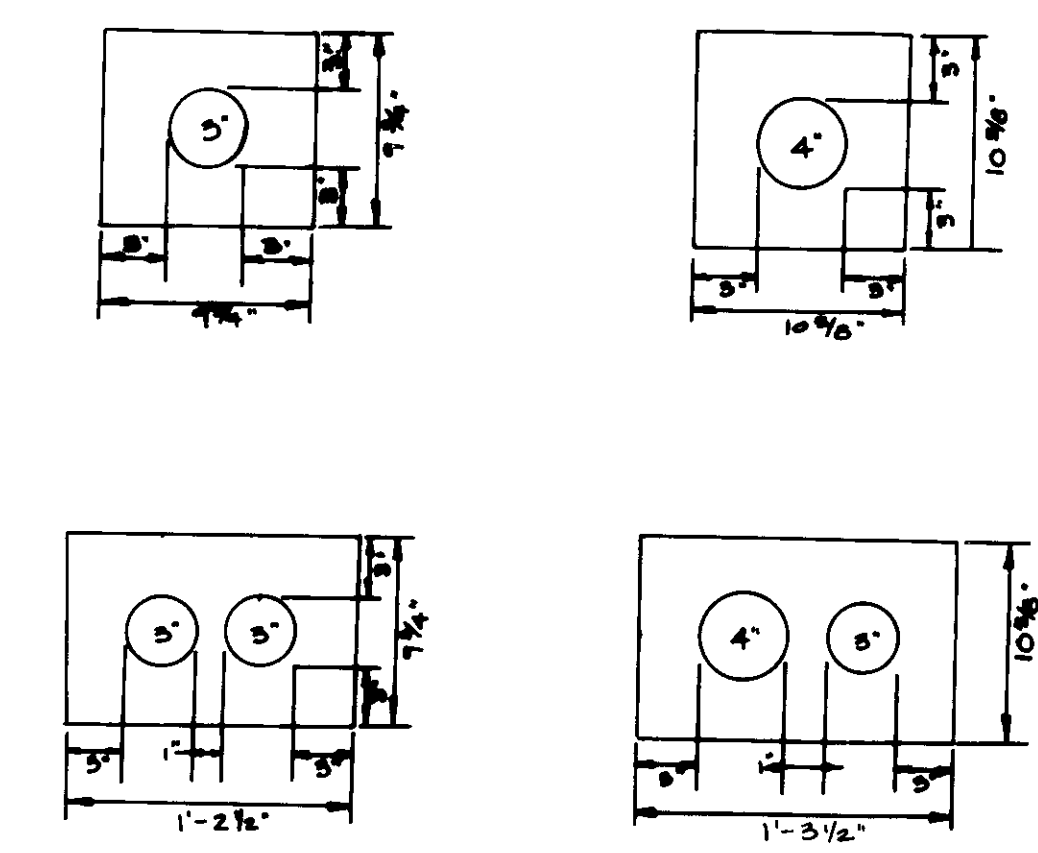
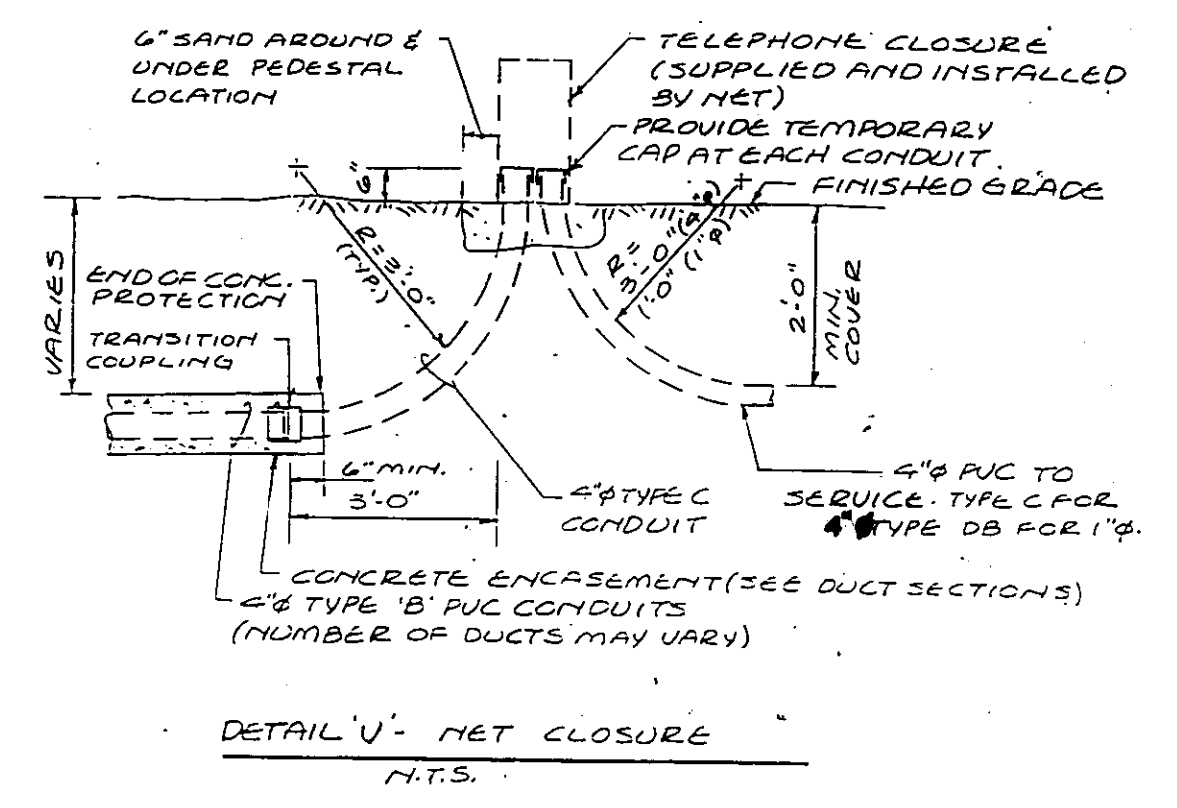
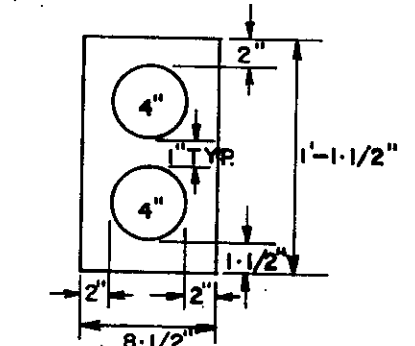
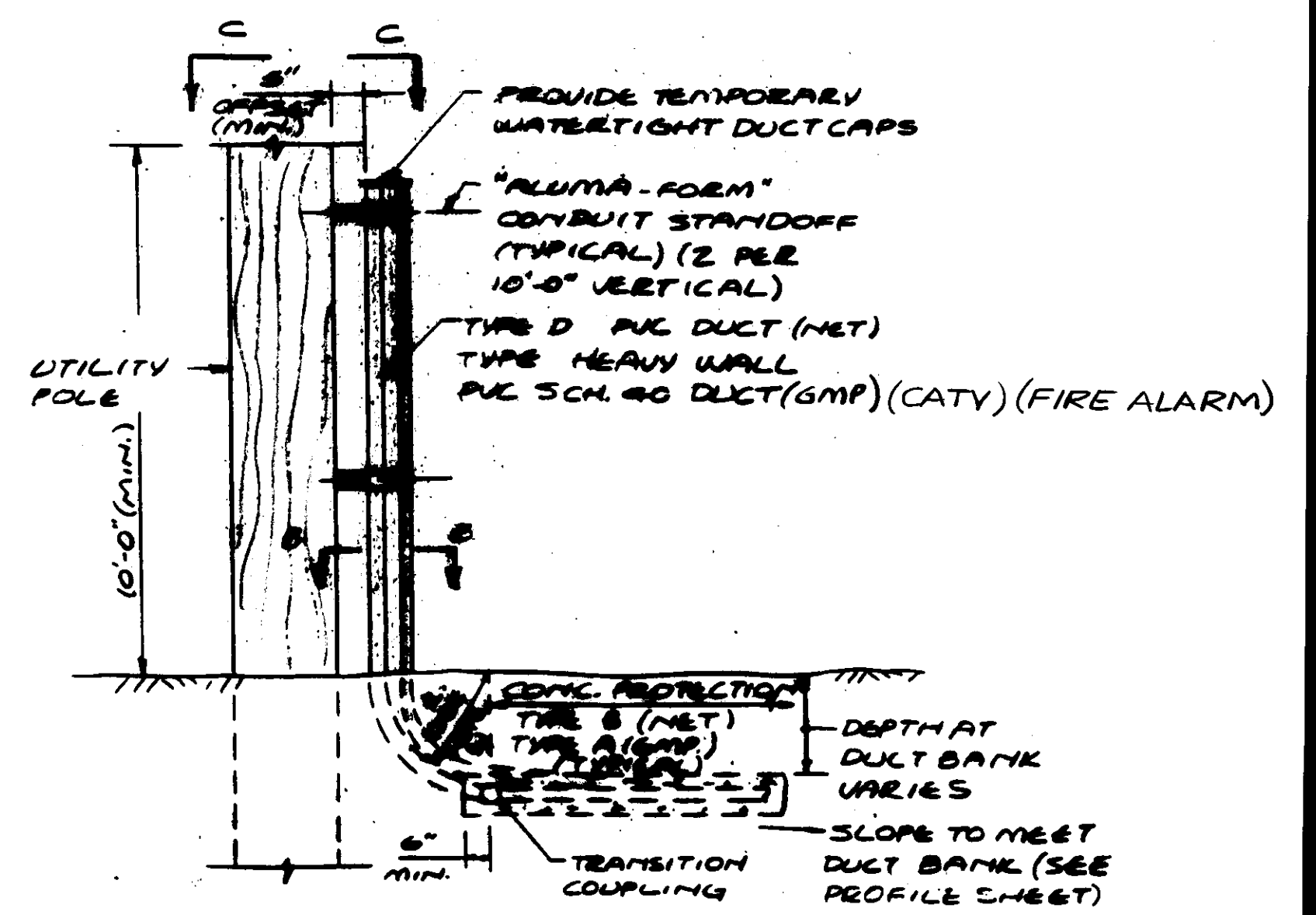
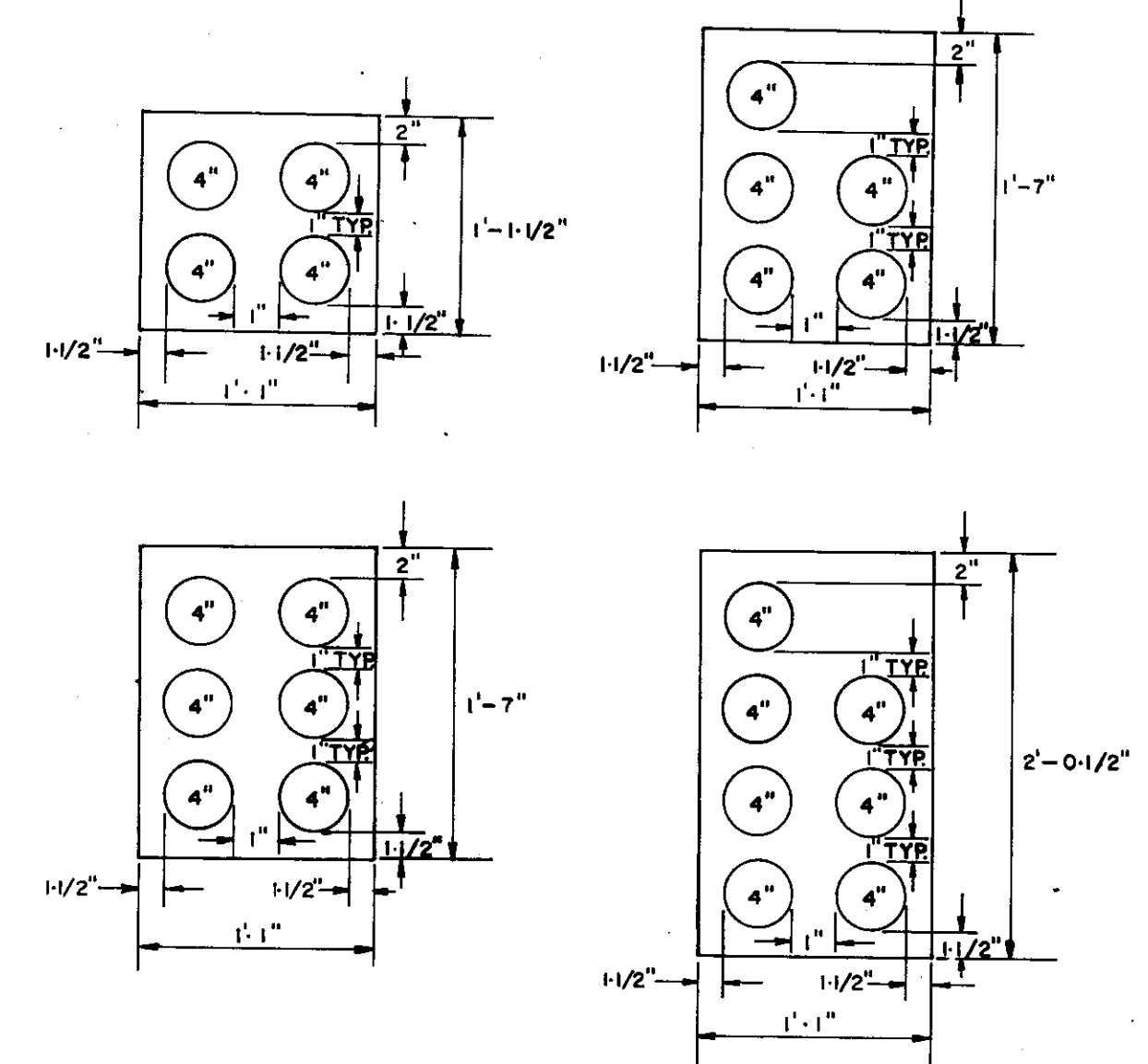


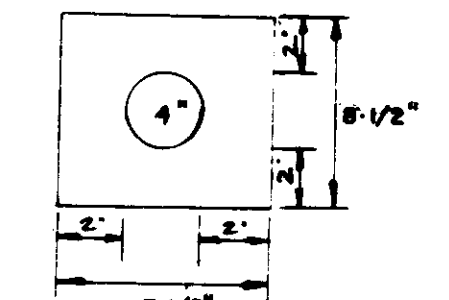
- NOTES FOR DETAIL 'M'**
- 1) NUMBER & SIZE OF RISING DUCTS SHOWN ON PLANS.
 - 2) NUMBER & SIZE OF STUBBED DUCTS SHOWN ON PLANS.
 - 3) USE PVC BAND RADII INDICATED ON SHEET 101C & 101E IN THE PLANS.
 - 4) DUCTS TERMINATING AT POLE, BUT NOT RISING UP POLE, SHALL EXTEND 6" (MIN.) ABOVE FINISH GRADE & HAVE WATER-TIGHT CAPS.
 - 5) CONTRACTOR SHALL VERIFY UTILITY ORIENTATION SHOWN IN PLAN SECT. C-C WITH UTILITIES PRIOR TO ERECTION.



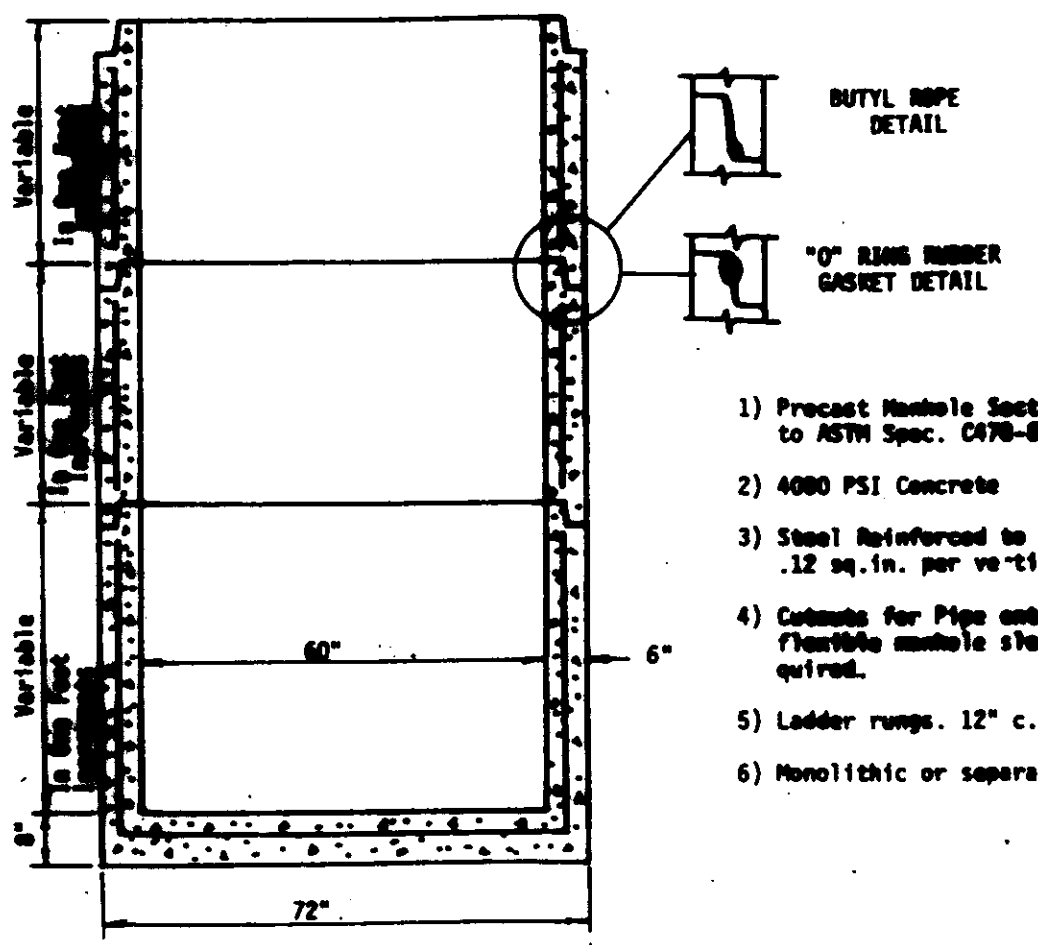
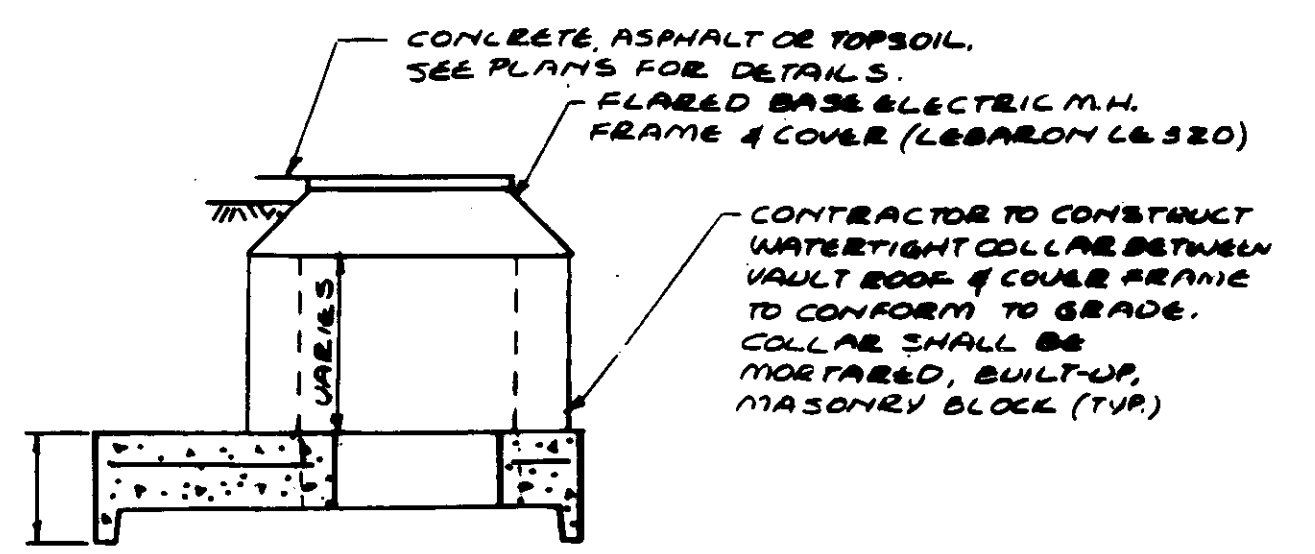
TYPICAL SECTIONS OF CONCRETE ENCASED CATV DUCT BANKS NOT TO SCALE



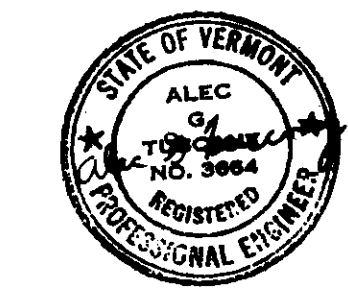
TYPICAL SECTIONS OF CONCRETE ENCASED NET DUCT BANKS NOT TO SCALE



TYPICAL SECTION OF CONCRETE ENCASED NET DUCT BANK NOT TO SCALE



- 1) Precast Manhole Sections built to ASTM Spec. C476-89.
- 2) 4000 PSI Concrete
- 3) Steel Reinforced to ASTM Specs. .12 sq. in. per vertical foot.
- 4) Collars for Pipe entries or Flanges on manhole sections as required.
- 5) Ladder rungs. 12" c.c.
- 6) Monolithic or separate bases.



CITY OF MONTPELIER
BERLIN STREET RESTORATION PROJECT
RISE R POLE AND CABLE TELEVISION DETAILS

MONTPELIER, VERMONT

Client No. 618040
Proj. Manager A. TUSCANY
Proj. Designer J. MYERS
Drawn By J.E. SHATNEY
Checked By L.B. LACKLEY
Scale AS SHOWN
Approved
Date 27 NOV. 1990

Sheet 101C of 101C
Sheet 3 of 7
D 618040-03

Rev.	Description	By	Date
1	NET SERVICES TO 4"	JTM	4/10/92
2	POLE SECTIONS	JTM	4/28/92