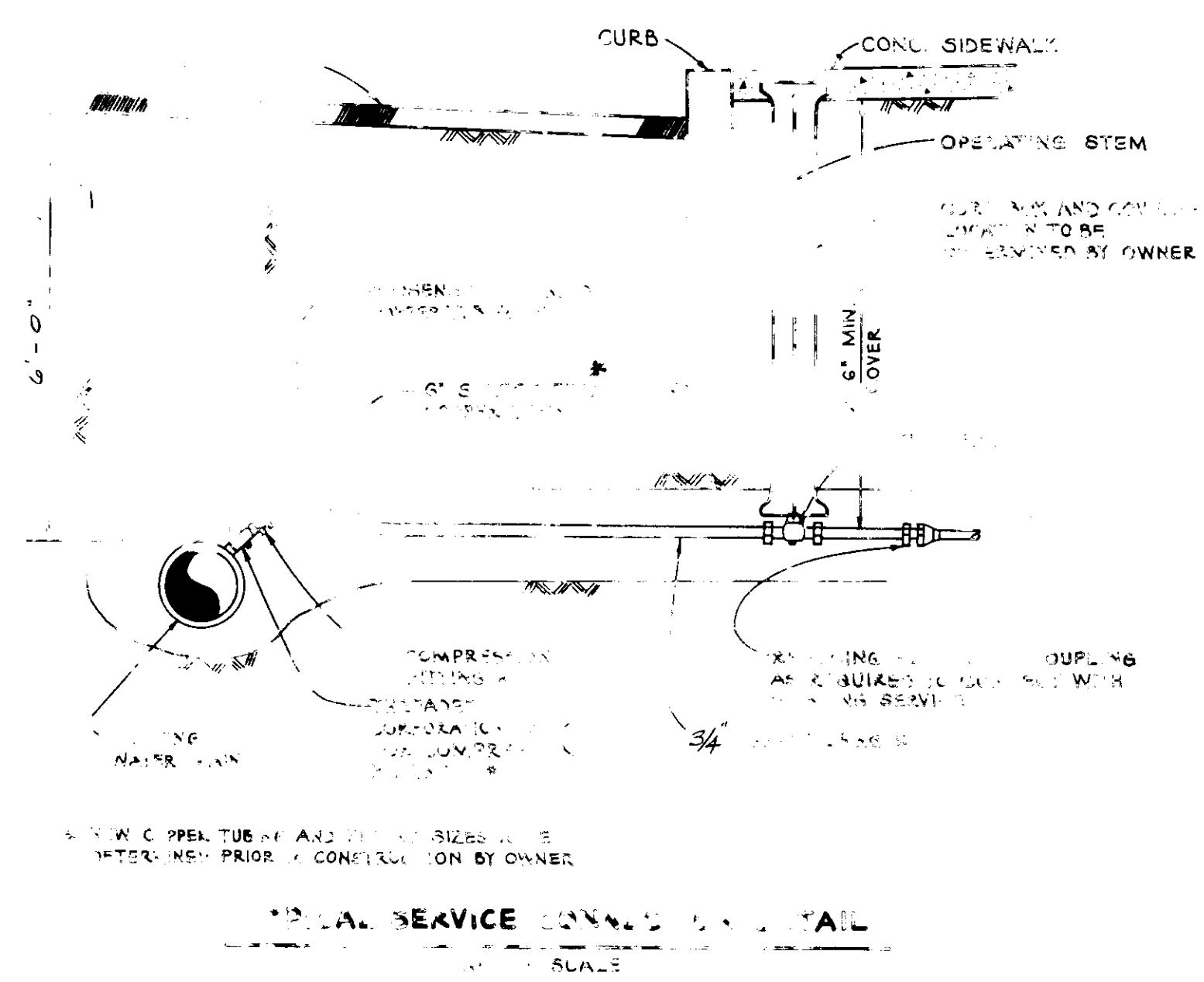
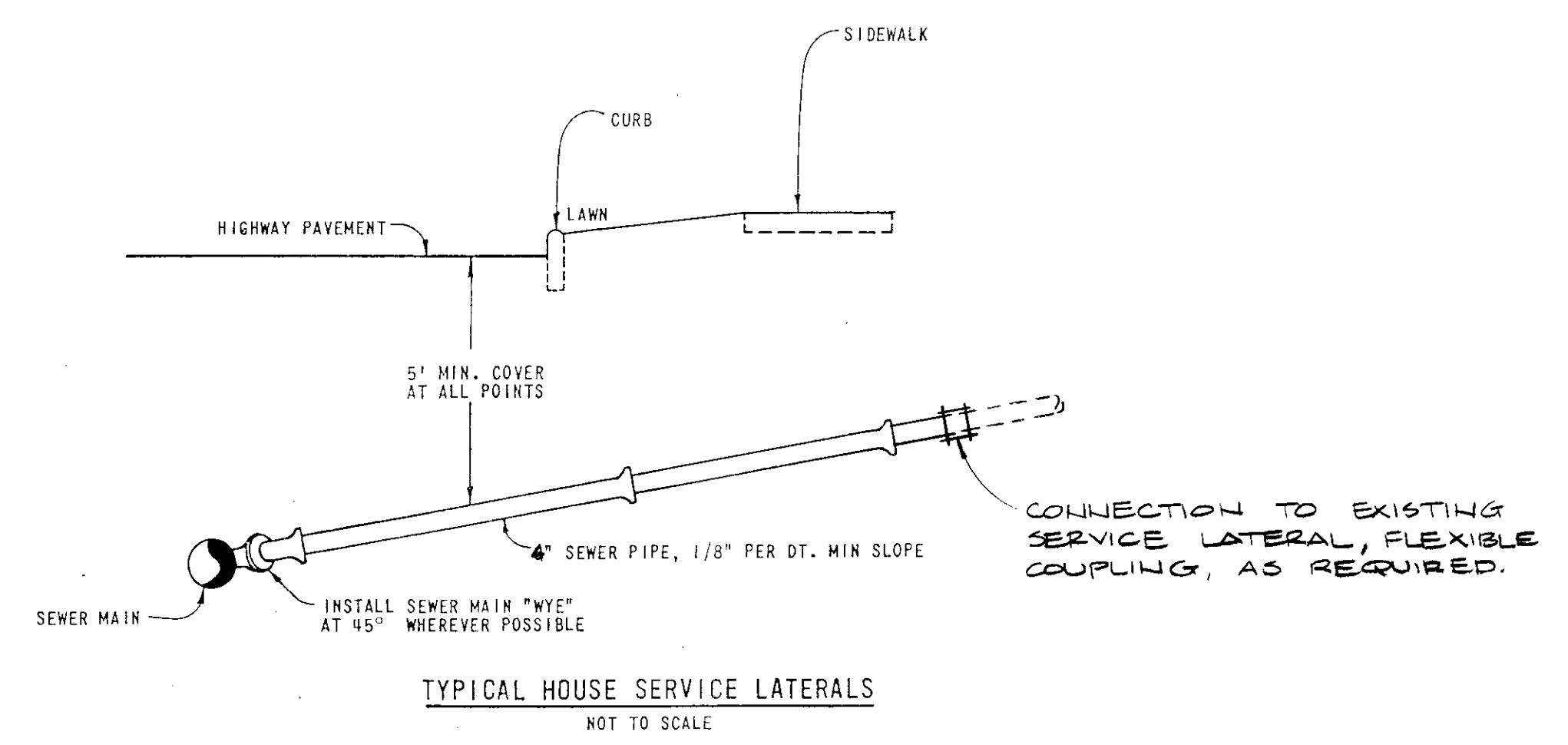


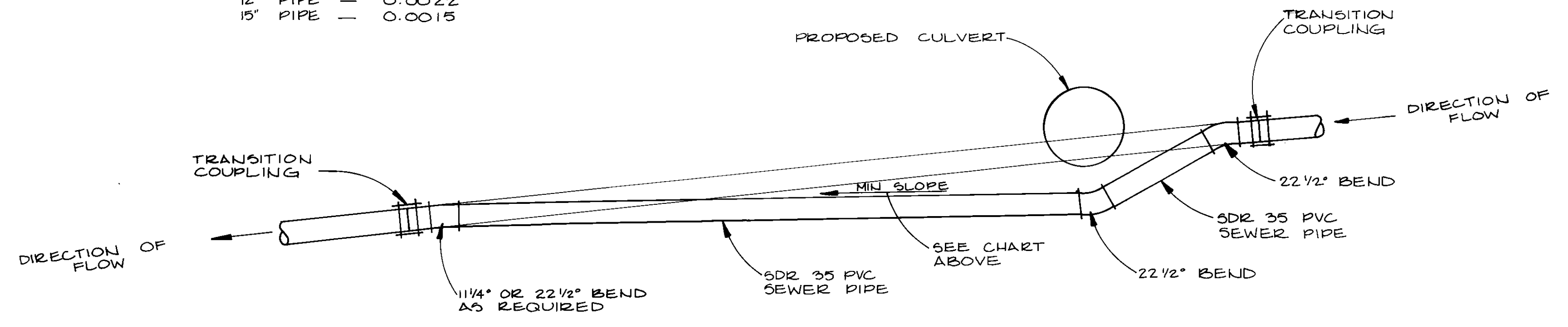
NOTES: EXISTING PIPE SIZE AND MATERIAL AS SHOWN ON WATER MAIN INSTALLATION PLAN SHEETS.
 CONTRACTOR TO MAKE CONNECTION TO EXISTING PIPE AS REQUIRED, AND MAINTAIN A CONSTANT SLOPE.
 SIZE OF PROPOSED SDR 35 PVC SEWER PIPE TO BE CONSISTANT WITH EXISTING.

"DETAIL A"
 SEWER MAIN DIVERSION DETAIL
 NOT TO SCALE



* SELECT FILL SHALL BE EXCAVATED MATERIAL UNLESS DETERMINED TO BE UNSUITABLE BY THE ENGINEER. UNSUITABLE MATERIAL SHALL BE REPLACED WITH GRANULAR BACKFILL FOR STRUCTURES ITEM #204.30

MIN. SLOPE	
16\"	PIPE — 0.0060
14\"	PIPE — 0.0040
12\"	PIPE — 0.0028
10\"	PIPE — 0.0022
8\"	PIPE — 0.0015



NOTE: CONTRACTOR TO VERIFY MIN. SLOPES CAN BE MAINTAINED PRIOR TO CONSTRUCTION OF CULVERT. CONTRACTOR TO NOTIFY FIELD ENGINEER IF IT CAN NOT BE MAINTAINED.

"DETAIL B"
 SEWER MAIN DIVERSION DETAIL
 NOT TO SCALE

BRUNING 44-232-74957

