

FINAL STATIONS DO NOT
INCLUDE BREAKS FOR DRIVES
VERTICAL GRANITE CURB

LEFT	RIGHT
64+80 ~ 67+60	62+00 ~ 67+60
62+06 ~ 62+43	62+00 ~ 62+11
62+55 ~ 64+17	62+31 ~ 63+31
REV 64+34 ~ REV 64+55	63+47 ~ REV 63+66
REV 64+85 ~ REV 66+29	REV 63+86 ~ REV 64+87
REV 66+48 ~ REV 67+57	REV 65+12 ~ REV 66+51
62+00 ~ 64+55	REV 66+80 ~ REV 67+60

BITUMINOUS CONC. SIDEWALK
REV 63+90 LT (3'-WIDE PVT. WALK)

NOTE: THE YARD LIGHT PRESENTLY LOCATED @ 62+40 LT WILL BE RELOCATED OUTSIDE THE CITY'S R.O.W. LIMITS, AT A LOCATION MUTUALLY AGREEABLE WITH THE RESIDENT ENGINEER AND THE PROPERTY OWNER. THE COSTS FOR THIS WORK AND NECESSARY MATERIALS WILL BE PAID UNDER ITEM 679.25(MOD) REMOVING AND RESETTING LIGHT POLE AND SHALL BE NON-GOV'T. PARTICIPATING.

CONSTRUCT SIDEWALK RAMP
LEFT
64+48 (TYPE 6)

TRANSPLANTING TREES
65+35 RT. (2" LOCUST)
TRANSPLANT TREE IN A LOCATION OUTSIDE OF THE R.O.W. MUTUALLY AGREEABLE WITH THE PROPERTY OWNER AND RESIDENT ENGINEER.

CONSTRUCT DRIVES
LEFT
62+00 12' WIDE (PAVED)
62+50 10' WIDE (PAVED)
64+27 16' WIDE (PAVED)
66+37 18' WIDE (GRAVEL)
67+70 24' WIDE (GRAVEL)
RIGHT
62+19 20' WIDE (PAVED)
63+39 16' WIDE (GRAVEL)
63+76 16' WIDE (GRAVEL)
65+00 24' WIDE (PAVED)
66+66 13' WIDE (PAVED)

DECIDUOUS TREES
63+68 ~ 64+83 RT. (1-1/2" TO 2" FLOWERING DOGWOOD)
TREES TO BE PLANTED OUTSIDE OF THE R.O.W. LIMITS IN A LOCATION WITH THE PROPERTY OWNER AND RESIDENT ENGINEER

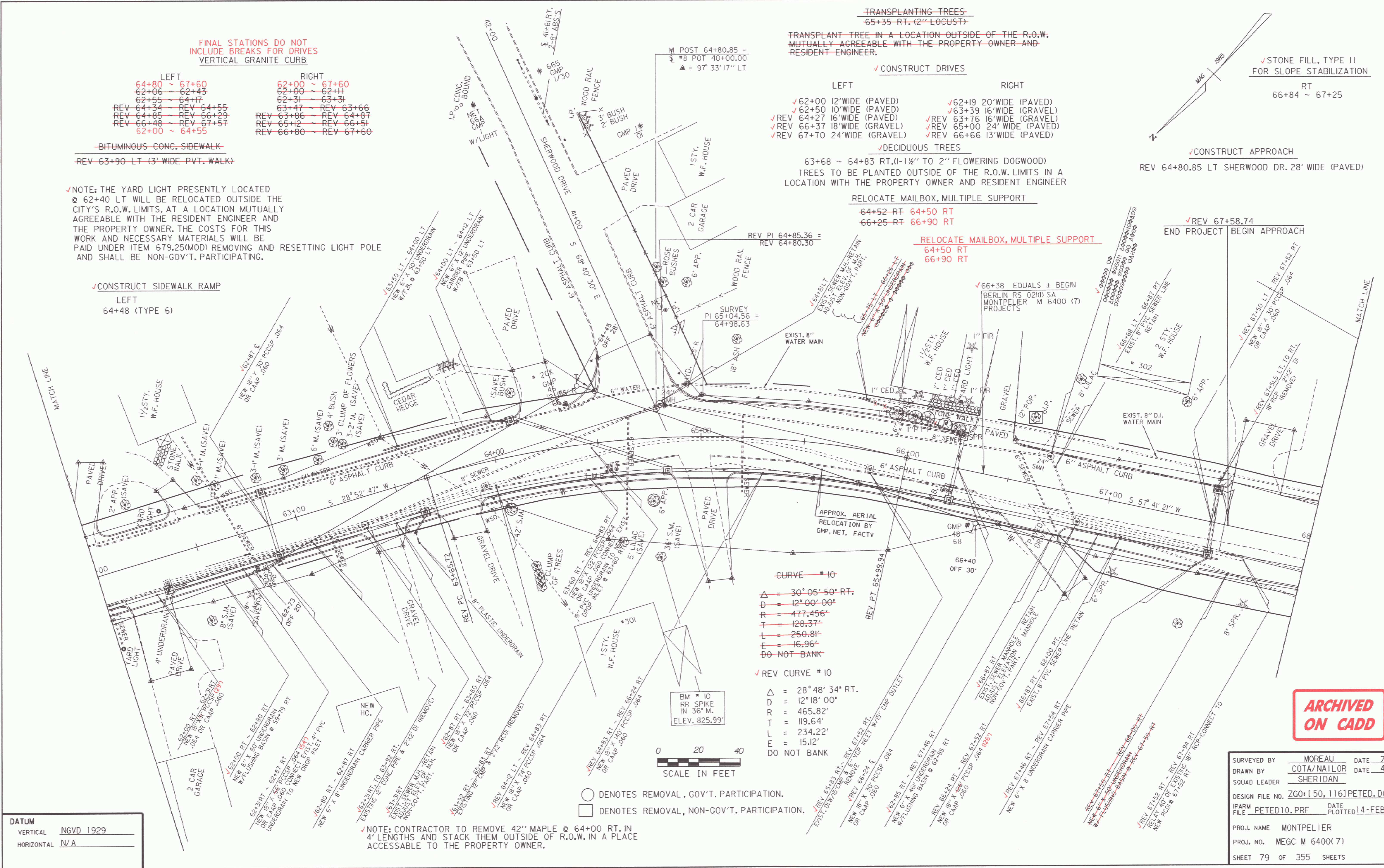
RELOCATE MAILBOX, MULTIPLE SUPPORT
64+52 RT 64+50 RT
66+25 RT 66+90 RT

RELOCATE MAILBOX, MULTIPLE SUPPORT
64+50 RT
66+90 RT

STONE FILL, TYPE II
FOR SLOPE STABILIZATION
RT
66+84 ~ 67+25

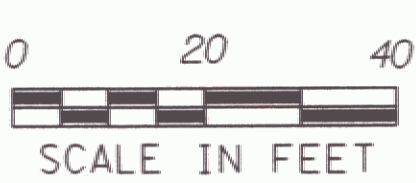
CONSTRUCT APPROACH
REV 64+80.85 LT SHERWOOD DR. 28' WIDE (PAVED)

REV 67+58.74
END PROJECT BEGIN APPROACH



CURVE # 10
 $\Delta = 30^{\circ} 05' 50''$ RT.
 $D = 12^{\circ} 00' 00''$
 $R = 477.456'$
 $L = 128.37'$
 $T = 250.81'$
 $E = 16.96'$
 DO NOT BANK

REV CURVE # 10
 $\Delta = 28^{\circ} 48' 34''$ RT.
 $D = 12^{\circ} 18' 00''$
 $R = 465.82'$
 $L = 119.64'$
 $T = 234.22'$
 $E = 15.12'$
 DO NOT BANK



○ DENOTES REMOVAL, GOV'T. PARTICIPATION.
 □ DENOTES REMOVAL, NON-GOV'T. PARTICIPATION.

NOTE: CONTRACTOR TO REMOVE 42" MAPLE @ 64+00 RT. IN 4' LENGTHS AND STACK THEM OUTSIDE OF R.O.W. IN A PLACE ACCESSIBLE TO THE PROPERTY OWNER.

DATUM
 VERTICAL NGVD 1929
 HORIZONTAL N/A

ARCHIVED
ON CADD

SURVEYED BY	MOREAU	DATE	7-85
DRAWN BY	COTA/NAI/LOR	DATE	4-88
SQUAD LEADER	SHERIDAN		
DESIGN FILE NO.	ZGO: [50, 116] PETED.DGN; 1		
IFARM FILE	PETED10.PRF	DATE PLOTTED	14-FEB-1996
PROJ. NAME	MONTPELIER		
PROJ. NO.	MEGC M 6400 (7)		
SHEET	79	OF	355 SHEETS