

CONSTRUCT SIDEWALK RAMP
LEFT
REV. 34+42 (TYPE I)
REV. 34+89 (TYPE I)

PORTLAND CEMENT CONC.
SIDEWALK - 5' X 5' WIDE
REV. 33+00 LT ~ 34+47 LT 34+38.5
REV. 34+87 LT ~ 39+00 LT
34+38.5 LT ~ 34+53.2 LT
34+84 LT ~ 34+94.5 LT
34+94.5 LT ~ 39+00 LT

BITUMINOUS CONCRETE SIDEWALK
REV. 33+29 LT (3' WIDE PVT. WALK) (CONCRETE)
REV. 33+50 LT (2' WIDE PVT. WALK) (CONCRETE)
REV. 34+10 LT (3' WIDE PVT. WALK) (CONCRETE)
REV. 35+34 LT (3' WIDE PVT. WALK) (CONCRETE)
REV. 36+83 LT (4' WIDE PVT. WALK)
REV. 37+65 LT (2' WIDE PVT. WALK)

CONSTRUCT DRIVES
LEFT
REV. 35+60 12' WIDE (PAVED)
REV. 36+40 16' WIDE (PAVED)
REV. 37+23 12' WIDE (GRAVEL)
REV. 37+96 16' WIDE (PAVED)
REV. 38+76 22' WIDE (PAVED)
RIGHT
REV. 33+64 16' WIDE (PAVED)
REV. 33+93 24' WIDE (PAVED)
REV. 35+60 12' WIDE (PAVED)
REV. 36+71 14' WIDE (PAVED)
REV. 37+75 16' WIDE (PAVED)
REV. 38+60 13' WIDE (PAVED)

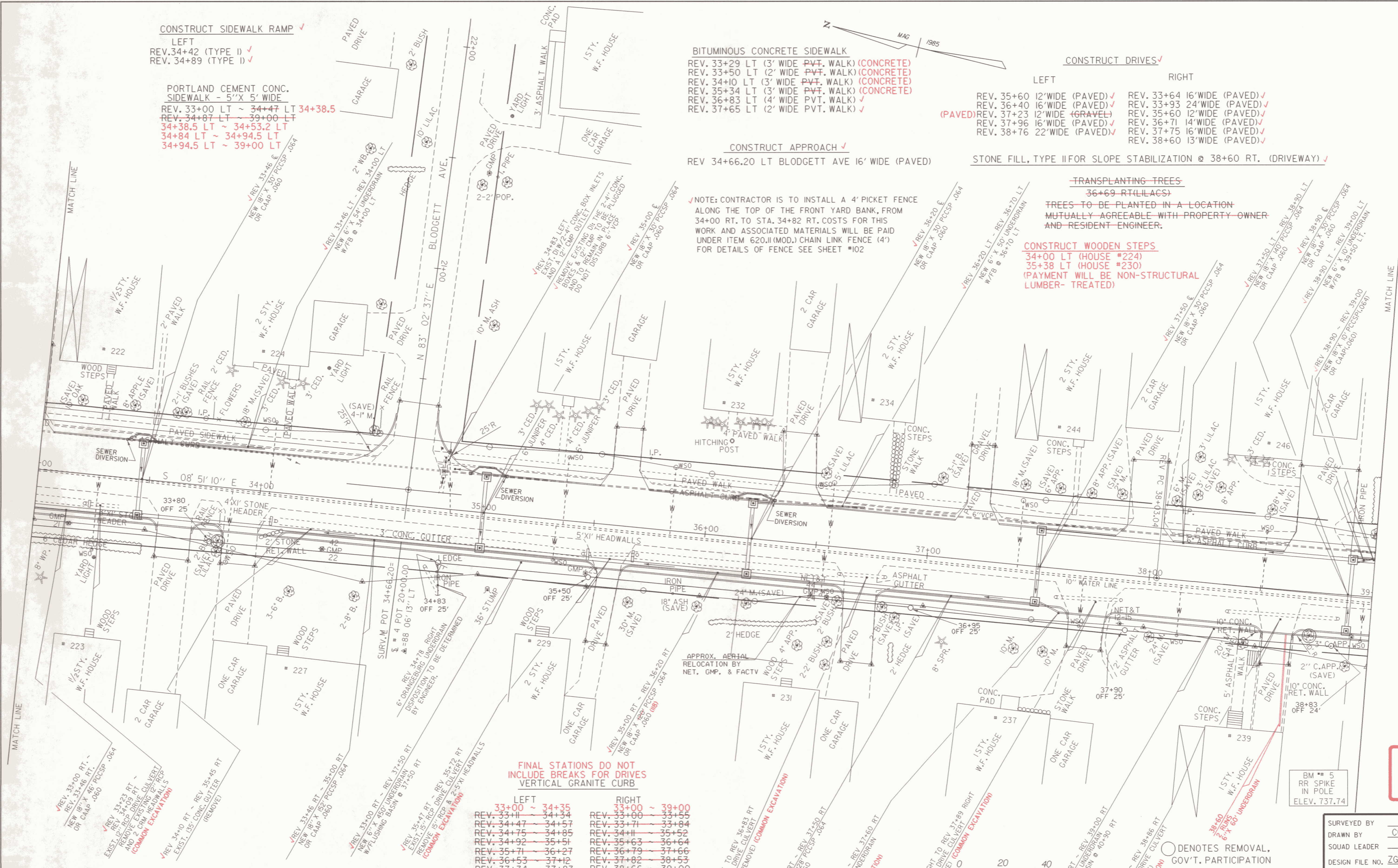
CONSTRUCT APPROACH
REV. 34+66.20 LT BLODGETT AVE 16' WIDE (PAVED)

STONE FILL, TYPE II FOR SLOPE STABILIZATION @ 38+60 RT. (DRIVEWAY)

NOTE: CONTRACTOR IS TO INSTALL A 4' PICKET FENCE ALONG THE TOP OF THE FRONT YARD BANK, FROM 34+00 RT. TO STA. 34+82 RT. COSTS FOR THIS WORK AND ASSOCIATED MATERIALS WILL BE PAID UNDER ITEM 620.11 (MOD.) CHAIN LINK FENCE (4') FOR DETAILS OF FENCE SEE SHEET #102

TRANSPLANTING TREES
36+69 RT (LILACS)
TREES TO BE PLANTED IN A LOCATION MUTUALLY AGREEABLE WITH PROPERTY OWNER AND RESIDENT ENGINEER.

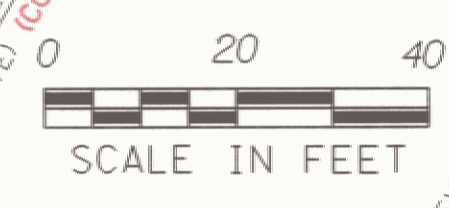
CONSTRUCT WOODEN STEPS
34+00 LT (HOUSE #224)
35+38 LT (HOUSE #230)
(PAYMENT WILL BE NON-STRUCTURAL LUMBER- TREATED)



FINAL STATIONS DO NOT INCLUDE BREAKS FOR DRIVES VERTICAL GRANITE CURB

LEFT	RIGHT
REV. 33+00 ~ 34+35	REV. 33+00 ~ 39+00
REV. 33+11 ~ 34+34	REV. 33+11 ~ 33+55
REV. 34+47 ~ 34+57	REV. 33+71 ~ 33+84
REV. 34+75 ~ 34+85	REV. 34+11 ~ 35+52
REV. 34+92 ~ 35+51	REV. 35+63 ~ 36+64
REV. 35+71 ~ 36+27	REV. 36+79 ~ 37+66
REV. 36+53 ~ 37+12	REV. 37+82 ~ 38+53
REV. 37+34 ~ 37+83	REV. 38+66 ~ 39+00
REV. 38+109 ~ 38+60	
REV. 38+92 ~ 39+00	
34+35 ~ 39+00	

DATUM
VERTICAL NGVD 1929
HORIZONTAL N/A



○ DENOTES REMOVAL, GOV'T. PARTICIPATION

ARCHIVED ON CADD

BM # 5
RR SPIKE
IN POLE
ELEV. 737.74

SURVEYED BY MOREAU DATE 7-85
DRAWN BY COTA/NAI/LOR DATE 4-88
SQUAD LEADER SHERIDAN
DESIGN FILE NO. ZG0:[50,116]PETED.DGN; 1
IPARM FILE PETED5.PRF DATE PLOTTED 13-FEB-1996
PROJ. NAME MONTPELIER
PROJ. NO. MEGC M 6400(7)
SHEET 69 OF 355 SHEETS