

RECONSTRUCT CONCRETE STEPS ✓  
W/METAL HAND RAIL  
(AS NECESSARY, OR AS DIRECTED  
BY THE ENGINEER)

25+14 RT

CONSTRUCT CONCRETE STAIRWAY ✓  
W/METAL HANDRAIL (4" WIDE)

21+05 LT

CONSTRUCT SIDEWALK RAMP ✓

LEFT

REV 25+54 (TYPE I)  
REV 25+95 (TYPE I)

FINAL STATIONS DO NOT  
INCLUDE BREAKS FOR DRIVES  
VERTICAL GRANITE CURB

LEFT

21+00 ~ 21+09  
21+31 ~ 21+73  
21+98 ~ 22+89  
23+21 ~ 23+50  
23+80 ~ 24+47  
24+73 ~ REV 25+37  
REV 25+52 ~ REV 25+63  
REV 25+80 ~ REV 25+94  
REV 26+02 ~ REV 27+00  
21+00 ~ 25+20  
25+80 ~ 27+00

RIGHT

21+07 ~ 22+12  
22+25 ~ 23+06  
23+22 ~ 24+01  
24+19 ~ REV 25+00  
REV 25+12 ~ REV 26+52  
REV 26+70 ~ REV 27+00  
21+00 ~ 27+00

NOTE: THE YARD LIGHT PRESENTLY LOCATED @ 23+27 RT  
WILL BE RELOCATED OUTSIDE THE CITY'S R.O.W. LIMITS,  
AT A LOCATION MUTUALLY AGREEABLE WITH THE RESIDENT  
AND THE PROPERTY OWNER. THE COSTS FOR THIS WORK AND  
ANY NECESSARY MATERIALS WILL BE PAID UNDER ITEM  
679.25 (MOD), REMOVING & RESETTING LIGHT POLE.  
AND SHALL BE NON-GOV'T. PARTICIPATING.

CONSTRUCT DRIVE

LEFT

21+20 12' WIDE (GRAVEL) (PAVED) ✓  
21+85 15' WIDE (PAVED) ✓  
23+05 22' WIDE (GRAVEL) (PAVED) ✓  
23+65 20' WIDE (PAVED) ✓  
24+60 16' WIDE (GRAVEL) ✓

RIGHT

22+21 12' WIDE (PAVED) ✓  
23+14 16' WIDE (PAVED) ✓  
24+10 16' WIDE (PAVED) ✓  
REV 25+05 12' WIDE (PAVED) ✓  
REV 26+60 16' WIDE (PAVED) ✓

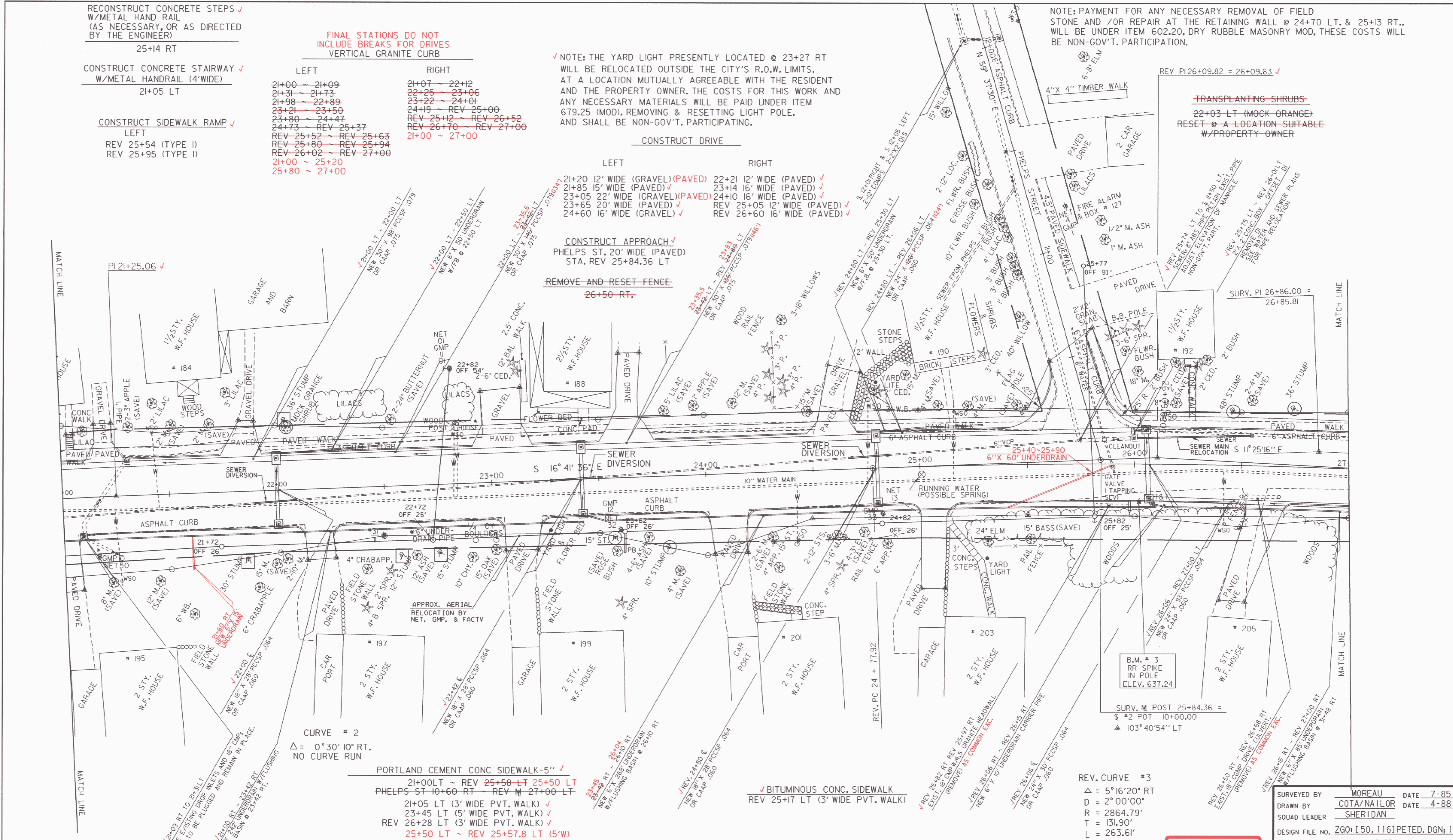
CONSTRUCT APPROACH ✓  
PHELPS ST. 20' WIDE (PAVED)  
STA. REV 25+84.36 LT

REMOVE AND RESET FENCE  
26+50 RT.

NOTE: PAYMENT FOR ANY NECESSARY REMOVAL OF FIELD  
STONE AND /OR REPAIR AT THE RETAINING WALL @ 24+70 LT. & 25+13 RT.,  
WILL BE UNDER ITEM 602.20, DRY RUBBLE MASONRY MOD, THESE COSTS WILL  
BE NON-GOV'T. PARTICIPATION.

REV PI 26+09.82 = 26+09.63 ✓

TRANSPLANTING SHRUBS  
22+03 LT (MOCK ORANGE)  
RESET @ A LOCATION SUITABLE  
W/PROPERTY OWNER



DATUM  
VERTICAL NGVD 1929  
HORIZONTAL N/A

0 20 40  
SCALE IN FEET

□ DENOTES REMOVAL, NON-GOV'T. PARTICIPATION  
○ DENOTES REMOVAL, GOV'T. PARTICIPATION

REV. CURVE #3  
Δ = 5°16'20" RT  
D = 2°00'00"  
R = 2864.79'  
T = 131.90'  
L = 263.61'  
E = 3.03'  
DO NOT BANK

ARCHIVED  
ON CADD

SURVEYED BY MOREAU DATE 7-85  
DRAWN BY COTA/NAIIOR DATE 4-88  
SQUAD LEADER SHERIDAN  
DESIGN FILE NO. ZG0-[50, 116]PETED.DGN; I  
IPARM FILE PETED3.PRF DATE PLOTTED 9-FEB-1996  
PROJ. NAME MONTPELIER  
PROJ. NO. MEGC M 6400(7)  
SHEET 65 OF 355 SHEETS