

THIS SHEET TO BE USED
FOR ROW INFORMATION ONLY

REMOVING AND RESETTING FENCE
LT
50+35 - 51+00

EXCAVATION OF SURFACES AND PAVEMENTS
LT
45+00 - 45+47

CONSTRUCT DRIVES

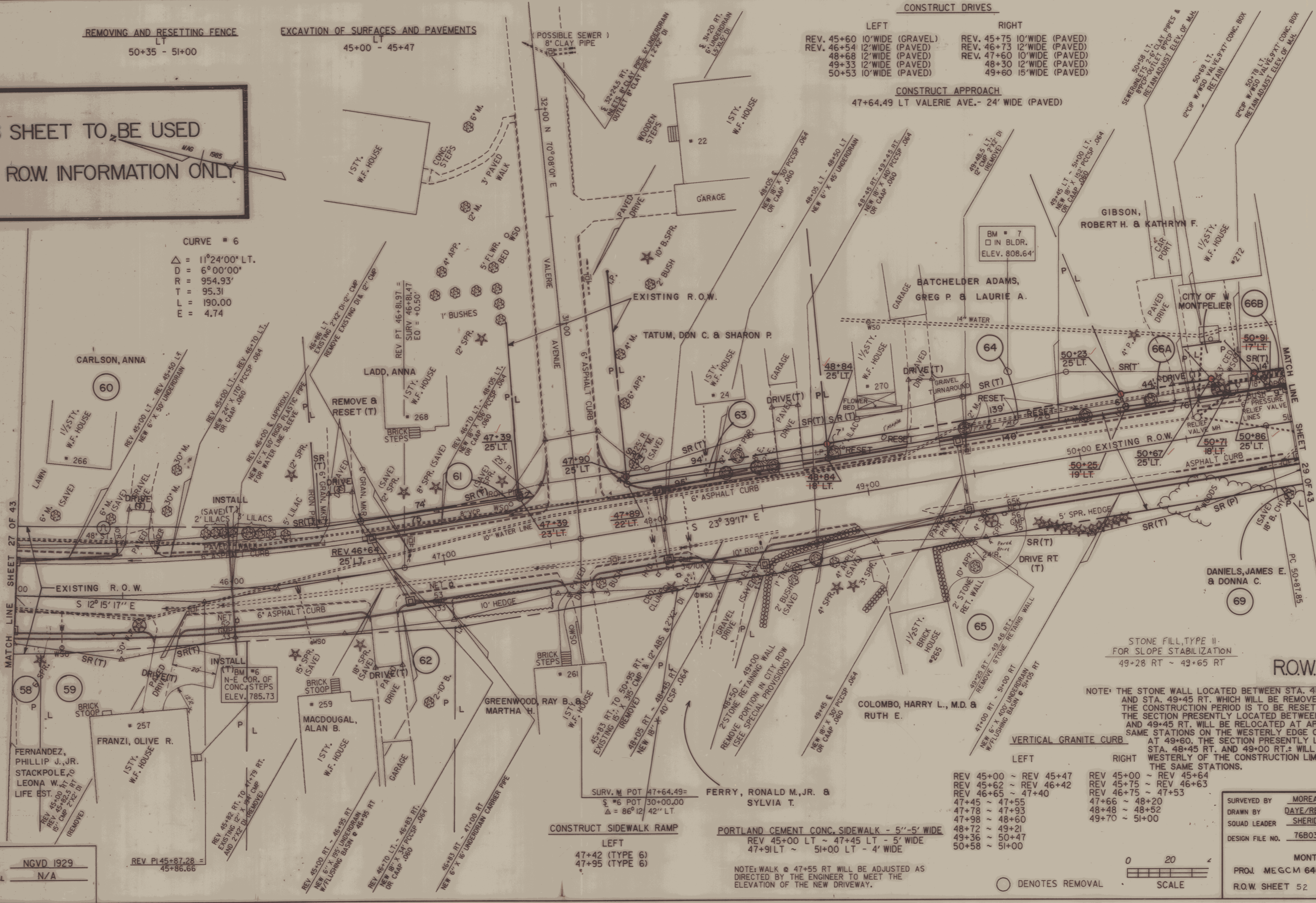
| LEFT | RIGHT |
|------------------------------|-----------------------------|
| REV. 45+60 10' WIDE (GRAVEL) | REV. 45+75 10' WIDE (PAVED) |
| REV. 46+54 12' WIDE (PAVED) | REV. 46+73 12' WIDE (PAVED) |
| REV. 48+68 12' WIDE (PAVED) | REV. 47+60 10' WIDE (PAVED) |
| REV. 49+33 12' WIDE (PAVED) | REV. 48+30 12' WIDE (PAVED) |
| REV. 50+53 10' WIDE (PAVED) | REV. 49+60 15' WIDE (PAVED) |

CONSTRUCT APPROACH

47+64.49 LT VALERIE AVE. - 24' WIDE (PAVED)

CURVE # 6

$\Delta = 11^{\circ}24'00''$ LT.
D = $6^{\circ}00'00''$
R = 954.93'
T = 95.31
L = 190.00
E = 4.74



STONE FILL, TYPE II
FOR SLOPE STABILIZATION
49+28 RT - 49+65 RT

ROW PLANS

NOTE: THE STONE WALL LOCATED BETWEEN STA. 48+45 RT. AND STA. 49+45 RT. WHICH WILL BE REMOVED DURING THE CONSTRUCTION PERIOD IS TO BE RESET AS FOLLOWS. THE SECTION PRESENTLY LOCATED BETWEEN STA. 49+27 RT. AND 49+45 RT. WILL BE RELOCATED AT APPROXIMATELY THE SAME STATIONS ON THE WESTERLY EDGE OF THE NEW DRIVE AT 49+60. THE SECTION PRESENTLY LOCATED BETWEEN STA. 48+45 RT. AND 49+00 RT. WILL BE RELOCATED WESTERLY OF THE CONSTRUCTION LIMITS, BETWEEN THE SAME STATIONS.

VERTICAL GRANITE CURB

| LEFT | RIGHT |
|-----------------------|-----------------------|
| REV 45+00 ~ REV 45+47 | REV 45+00 ~ REV 45+64 |
| REV 45+62 ~ REV 46+42 | REV 45+75 ~ REV 46+63 |
| REV 46+65 ~ 47+40 | REV 46+75 ~ 47+53 |
| 47+45 ~ 47+55 | 47+66 ~ 48+20 |
| 47+78 ~ 47+93 | 48+48 ~ 48+52 |
| 47+98 ~ 48+60 | 49+70 ~ 51+00 |
| 48+72 ~ 49+21 | |
| 49+36 ~ 50+47 | |
| 50+58 ~ 51+00 | |

CONSTRUCT SIDEWALK RAMP

LEFT
47+42 (TYPE 6)
47+95 (TYPE 6)

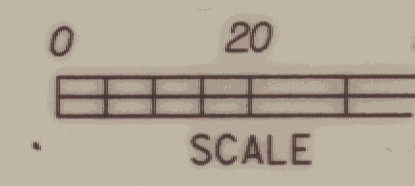
PORTLAND CEMENT CONC. SIDEWALK - 5'-5' WIDE

REV 45+00 LT ~ 47+45 LT - 5' WIDE
47+91 LT ~ 51+00 LT - 4' WIDE

NOTE: WALK @ 47+55 RT WILL BE ADJUSTED AS DIRECTED BY THE ENGINEER TO MEET THE ELEVATION OF THE NEW DRIVEWAY.

| | | | |
|------------------------|--------------|---------|--------|
| SURVEYED BY | MOREAU | DATE | 7-85 |
| DRAWN BY | DAYE/REDMOND | DATE | 4-88 |
| SQUAD LEADER | SHERIDAN | | |
| DESIGN FILE NO. | 76B033 | DATE | 4-7-88 |
| | | PLOTTED | |
| MONTPELIER | | | |
| PROJ. MEGCM 6400(7) | | | |
| R.O.W. SHEET 52 OF 335 | | | |

DATUM
VERTICAL NGVD 1929
HORIZONTAL N/A



○ DENOTES REMOVAL