

THIS SHEET TO BE USED  
FOR ROW INFORMATION ONLY

1" CHERRY AT STA. 40+14 RT.  
NOTE: 4" APPLE @ STA. 40+93 LT, AND FLOWERING CRAB  
@ STA. 40+95 LT, ARE TO BE RESET AT A LOCATION  
SPECIFIED BY THE ENGINEER.

CONSTRUCT SIDEWALK RAMP  
LEFT  
REV 40+94 (TYPE 6)  
REV 41+78 (TYPE 6)

CONSTRUCT WALK (PAVED)  
LEFT  
REV 39+20 (2.5' WIDE) (FLAGSTONE)  
REV 40+13 (5' WIDE)  
REV 41+98 (2' WIDE)

VERTICAL GRANITE CURB

LEFT	RIGHT
REV 39+00 ~ REV 39+58	REV 39+00 ~ REV 39+45
REV 39+70 ~ REV 40+30	REV 39+56 ~ REV 39+71
REV 40+46 ~ REV 40+92	REV 39+80 ~ REV 40+46
REV 40+97 ~ REV 41+14	REV 40+62 ~ REV 41+67
REV 41+39 ~ REV 41+75	REV 41+76 ~ REV 43+22
REV 41+80 ~ REV 45+00	REV 43+40 ~ REV 44+80
	REV 44+91 ~ REV 45+00

CONSTRUCT APPROACH  
(WHEELLOCK ST.)  
REV 41+57.15 LT 26' WIDE (PAVED)

PORTLAND CEMENT CONC SIDEWALK - 5'-5' WIDE  
REV 39+00 LT ~ REV 40+98 LT  
REV 41+65 LT ~ REV 45+00 LT

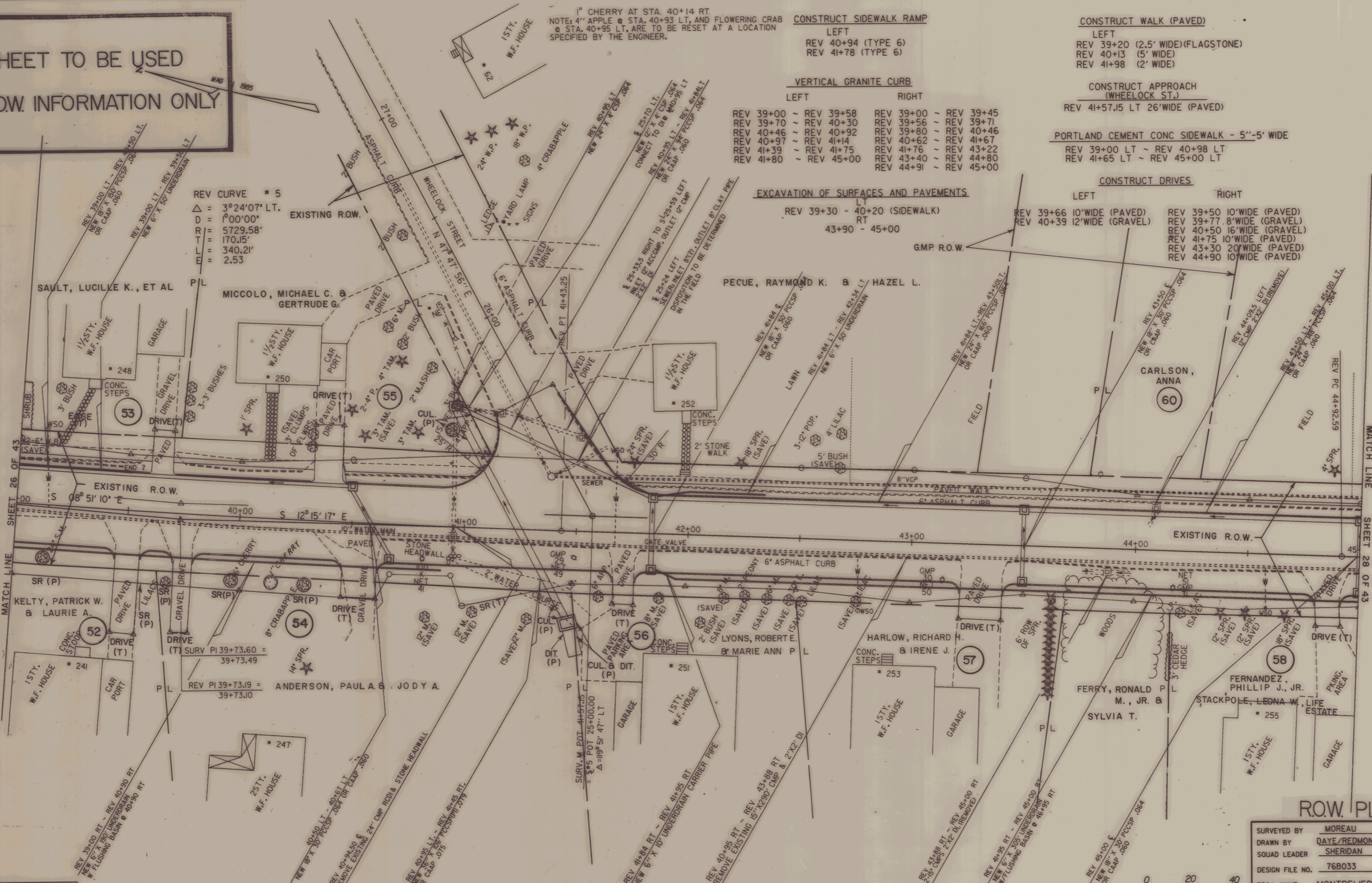
EXCAVATION OF SURFACES AND PAVEMENTS

REV 39+30 - 40+20 (SIDEWALK)  
RT  
43+90 - 45+00

CONSTRUCT DRIVES

LEFT	RIGHT
REV 39+66 10' WIDE (PAVED)	REV 39+50 10' WIDE (PAVED)
REV 40+39 12' WIDE (GRAVEL)	REV 39+77 8' WIDE (GRAVEL)
	REV 40+50 16' WIDE (GRAVEL)
	REV 41+75 10' WIDE (PAVED)
	REV 43+30 20' WIDE (PAVED)
	REV 44+90 10' WIDE (PAVED)

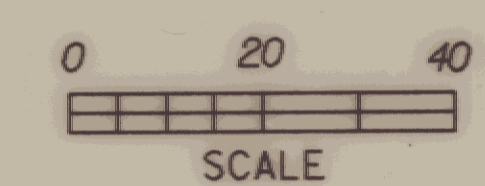
REV CURVE # 5  
Δ = 3°24'07" LT.  
D = 1°00'00"  
R = 5729.58'  
T = 170.15'  
L = 340.21'  
E = 2.53



DATUM  
VERTICAL NGVD 1929  
HORIZONTAL N/A

NOTE: THE WOOD FROM THE 24" S.M. @ STA 39+13 RT IS TO BE RETAINED BY THE PROPERTY OWNER, AND STACKED AT A LOCATION SPECIFIED BY THE ENGINEER.

NOTE: LILACS AND TREES BEING REMOVED @ STA 39+69 RT, 40+14 RT, 39+97 RT AND 40+30 RT, ARE TO BE REPLACED, REPLACEMENTS TO BE PLANTED AT A LOCATION SPECIFIED BY THE ENGINEER.



ROW PLANS

SURVEYED BY	MOREAU	DATE	7-85
DRAWN BY	DAYE/REDMOND	DATE	4-88
SQUAD LEADER	SHERIDAN		
DESIGN FILE NO.	76B033	DATE	4-7-88
PROJ. NAME	MONTPELIER	PLOTTED	
PROJ. NO.	MEGC M6400(7)		

R.O.W. SHEET 51 OF 335