

NOTE: STA. 32+04 LT. ~ 32+62 LT. SCARIFY EXISTING PAVEMENT FOR 4' BEHIND NEW SIDEWALK. AREA TO BE TOPSOILED AND SEEDED AS DIRECTED BY THE ENGINEER.

STONE FILL TYPE I FOR SLOPE STABILIZATION

RT 30+50 ~ 30+80

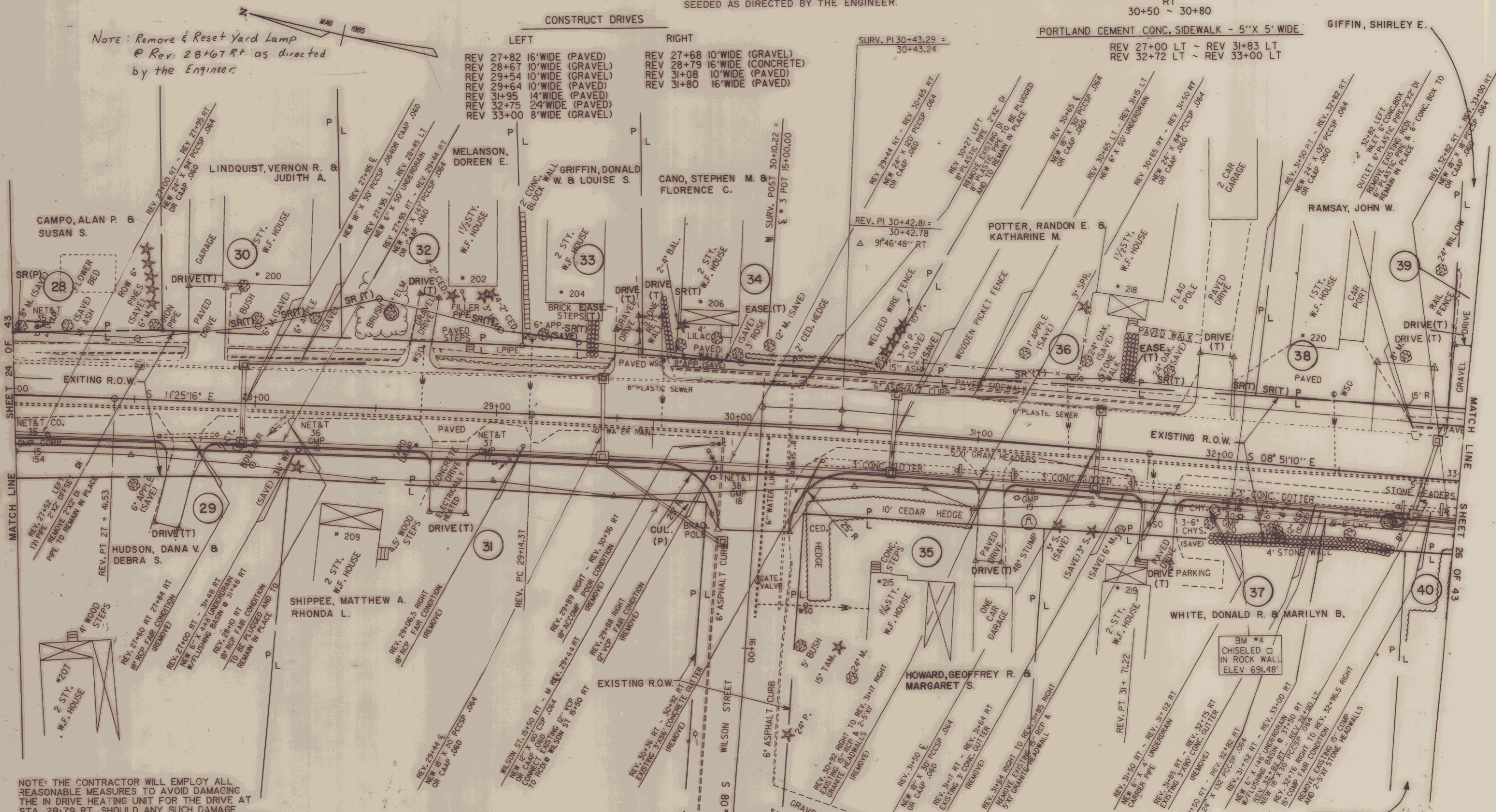
PORTLAND CEMENT CONC. SIDEWALK - 5" X 5' WIDE

REV 27+00 LT ~ REV 31+83 LT  
REV 32+72 LT ~ REV 33+00 LT

Note: Remove & Reset Yard Lamp @ Rev. 28+67 RT as directed by the Engineer.

CONSTRUCT DRIVES

LEFT	RIGHT
REV 27+82 16' WIDE (PAVED)	REV 27+68 10' WIDE (GRAVEL)
REV 28+67 10' WIDE (GRAVEL)	REV 28+79 16' WIDE (CONCRETE)
REV 29+54 10' WIDE (GRAVEL)	REV 31+08 10' WIDE (PAVED)
REV 29+64 10' WIDE (PAVED)	REV 31+80 16' WIDE (PAVED)
REV 31+95 14' WIDE (PAVED)	
REV 32+75 24' WIDE (PAVED)	
REV 33+00 8' WIDE (GRAVEL)	



NOTE: THE CONTRACTOR WILL EMPLOY ALL REASONABLE MEASURES TO AVOID DAMAGING THE IN DRIVE HEATING UNIT FOR THE DRIVE AT STA. 28-79 RT. SHOULD ANY SUCH DAMAGE OCCUR, THE UNIT WILL BE REPAIRED OR REPLACED IN KIND AT THE DIRECTION OF THE ENGINEER. COSTS FOR MATERIALS AND LABOR FOR THIS WORK SHALL BE SUBSIDIARY TO OTHER ITEMS.

VERTICAL GRANITE CURB

LEFT	RIGHT
REV. 27+00 ~ 27+70	REV. 27+00 ~ 27+66
REV. 27+87 ~ 28+60	REV. 27+76 ~ 28+73
REV. 28+71 ~ 29+47	REV. 28+89 ~ 29+94
REV. 29+69 ~ 31+87	REV. 30+23 ~ 31+02
REV. 32+04 ~ 32+61	REV. 31+12 ~ 31+69
REV. 32+87 ~ 32+92	REV. 31+84 ~ 33+00

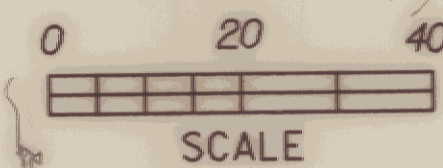
CONSTRUCT APPROACH  
30+10 RT WILSON ST. - 30' WIDE (PAVED)

THIS SHEET TO BE USED FOR ROW INFORMATION ONLY

REV. CURVE # 4  
 $\Delta = 2^\circ 34' 06''$  RT.  
 $D = 100' 00''$   
 $R = 5729.58'$   
 $L = 128.44'$   
 $T = 256.83'$   
 $E = 1.44'$

○ DENOTES REMOVAL

CONSTRUCT WALK (PAVED)  
 LEFT  
 REV. 29+40 (4' WIDE) FLAGSTONE  
 REV. 29+95 (3.5' WIDE)  
 REV. 31+61 (6' WIDE) FLAGSTONE



ROW PLANS

SURVEYED BY	MOREAU	DATE	7-85
DRAWN BY	DAYE/REDMOND	DATE	4-88
SQUAD LEADER	SHERIDAN		
DESIGN FILE NO.	76B033	DATE	4-7-88
PROJ. NAME	MONTPELIER	PLOTTED	
PROJ. NO.	MEGC M6400(7)		
R.O.W. SHEET 49 OF 335			

DATUM	
VERTICAL	NGVD 1929
HORIZONTAL	N/A