



INDEX OF SHEETS

STATE OF VERMONT  
AGENCY OF TRANSPORTATION



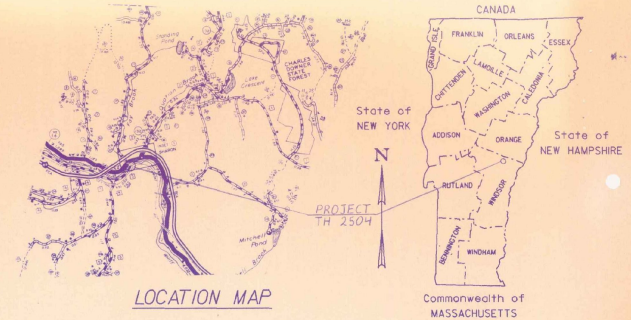
PROPOSED IMPROVEMENT  
BRIDGE PROJECT

TOWN OF SHARON  
COUNTY OF WINDSOR

ROUTE NO : TH 3 (FAS 177) BRIDGE NO : 15

PROJECT LOCATION : BEGINNING AT A POINT ON TH 3 0.01 MILES SOUTH OF ITS INTERSECTION WITH VT. 14 AND PROCEEDING IN A SOUTHERLY DIRECTION 0.11 MILES.  
PROJECT DESCRIPTION : REHABILITATION OF THE EXISTING STRUCTURE AND REALIGNMENT OF TH 3, ALONG WITH RELATED APPROACH ROADWAY WORK.

LENGTH OF STRUCTURE : 371.25 FEET.  
LENGTH OF PARTICIPATION ROADWAY : 271.75 FEET.  
LENGTH OF NON-PARTICIPATION ROADWAY : FEET.  
LENGTH OF PROJECT : 593.00 FEET.



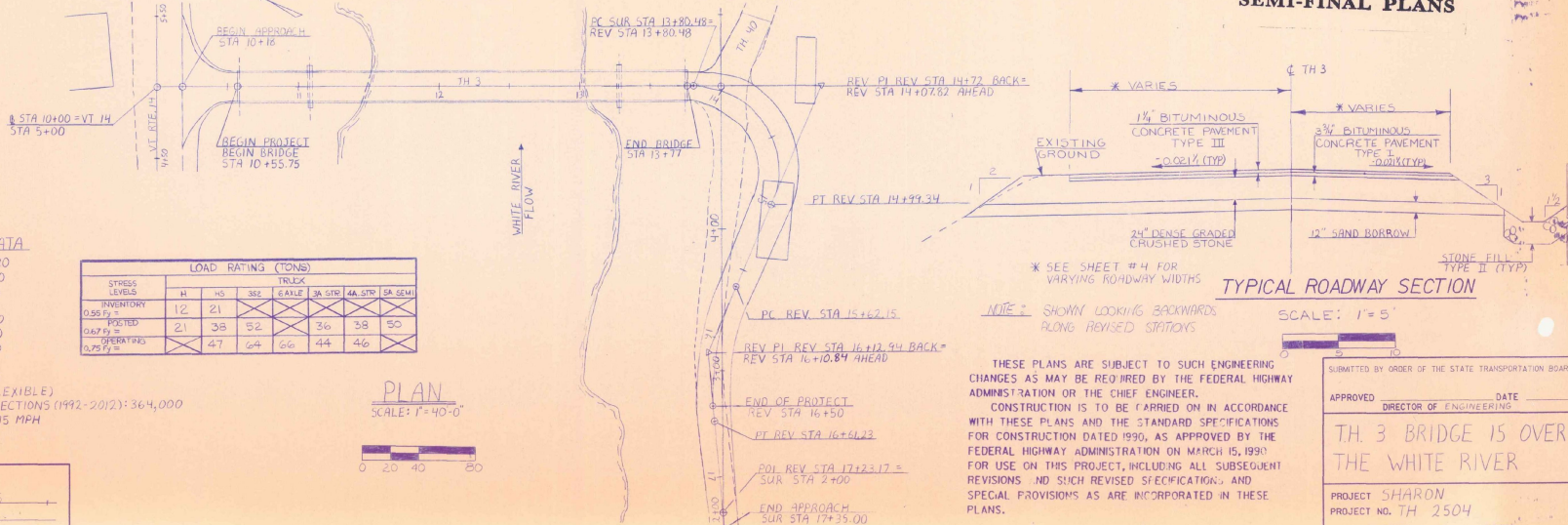
GENERAL NOTES

BRIDGE NO. 15, TH 3 WILL BE CLOSED DURING CONSTRUCTION.

STATE OF VERMONT  
AGENCY OF TRANSPORTATION  
SEMI-FINAL PLANS

HYDRAULIC DATA

Q<sub>10</sub> 449.7  
Q<sub>50</sub> 458.2  
Q<sub>100</sub> 461.5



CONVENTIONAL SIGNS

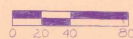
- COUNTY LINE
- TOWN LINE
- LIMITS OF ACCESS
- POINT OF ACCESS
- FENCE LINE
- STONE WALL
- TRAVELED WAY
- RAILROAD
- RAILROAD SURVEY LINE
- CULVERT
- POWER POLE
- TELEPHONE POLE
- TREES
- CONTROL OF ACCESS
- PROPERTY LINE
- R.O.W. TAKING LINE
- SLOPE RIGHTS
- TOP OF CUT
- TOE OF SLOPE

TRAFFIC DATA

1992 ADT = 690  
DHV = 100  
ADTT = 35  
%T = 3  
2012 ADT = 950  
DHV = 130  
ADTT = 60  
%T = 3  
%D = 54  
18 KIP ESAL (FLEXIBLE)  
TOTAL BOTH DIRECTIONS (1992-2012): 364,000  
DESIGN SPEED = 15 MPH

STRESS LEVELS	LOAD RATING (TONS)						
	M	H3	SS2	GA1E	3A STD	4A STD	5A SEMI
INVENTORY	12	21					
POSTED	21	38	52	36	38	50	
OPERATING	47	64	66	44	46		

PLAN  
SCALE: 1" = 40'-0"



DATUM

VERTICAL USGS  
HORIZONTAL N/A

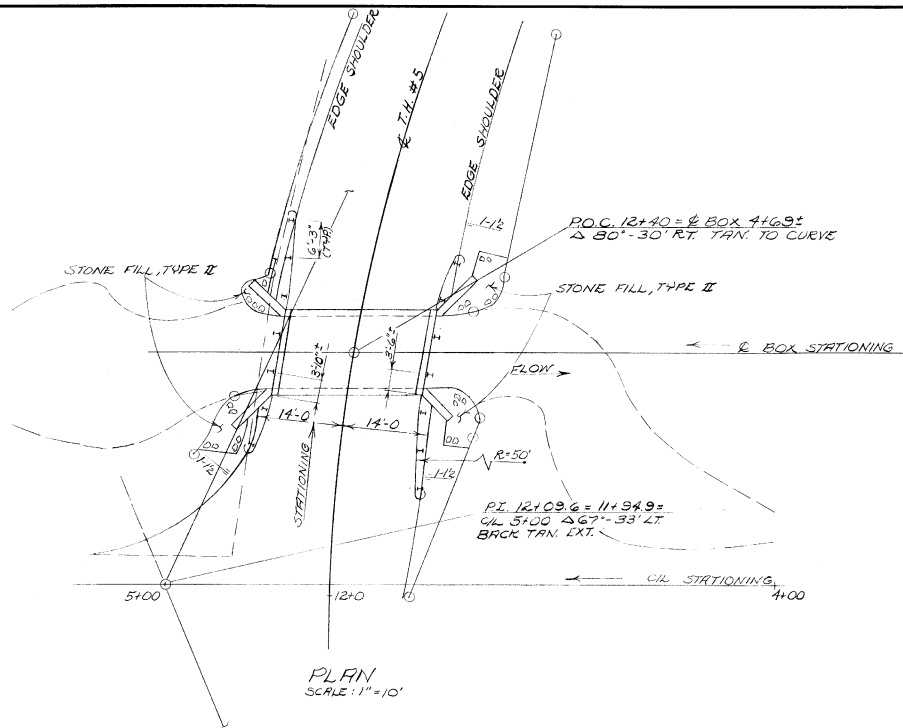
THESE PLANS ARE SUBJECT TO SUCH ENGINEERING CHANGES AS MAY BE REQUIRED BY THE FEDERAL HIGHWAY ADMINISTRATION OR THE CHIEF ENGINEER.  
CONSTRUCTION IS TO BE CARRIED ON IN ACCORDANCE WITH THESE PLANS AND THE STANDARD SPECIFICATIONS FOR CONSTRUCTION DATED 1990, AS APPROVED BY THE FEDERAL HIGHWAY ADMINISTRATION ON MARCH 15, 1990 FOR USE ON THIS PROJECT, INCLUDING ALL SUBSEQUENT REVISIONS AND SUCH REVISED SPECIFICATIONS AND SPECIAL PROVISIONS AS ARE INCORPORATED IN THESE PLANS.

SUBMITTED BY ORDER OF THE STATE TRANSPORTATION BOARD

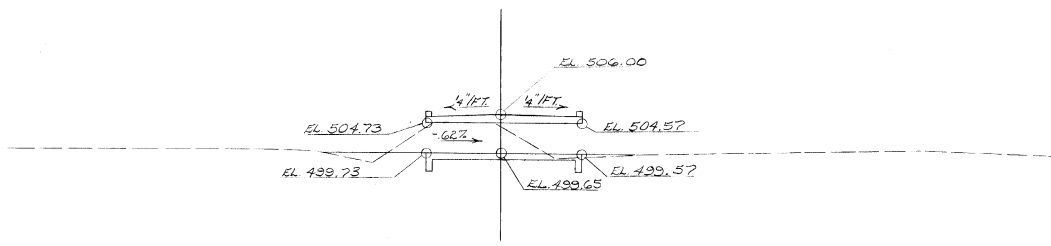
APPROVED \_\_\_\_\_ DATE \_\_\_\_\_  
DIRECTOR OF ENGINEERING

TH 3 BRIDGE 15 OVER  
THE WHITE RIVER

PROJECT SHARON  
PROJECT NO. TH 2504  
SHEET 1 OF SHEETS



PLAN  
SCALE: 1" = 10'



ELEVATION @ C & B  
SCALE: 1" = 10'

QUANTITIES			
	PARTICIPATION	TOTAL	FINAL
203.27	UNCLASSIFIED CHANNEL EXC.	C.H. 30	
204.25	STRUCTURE EXC.	C.H. 130	
204.30	GRANULAR B.F.L. FOR STRUCTURES	C.H. 50	
301.15	SUBBASE OF GRAVEL	C.H. 200	
501.25	CONC. CLASS B	C.H. 64	
507.15	REIN. STEEL	LB. 7310	
613.11	STONE FILL, TYPE II	C.H. 30	
621.25	GUARD RAIL, STD. ST. B.M. W/ST. POSTS, TYPE I	L.F. 83	
NON-PARTICIPATION			
301.15	SUBBASE OF GRAVEL	C.H. 50	

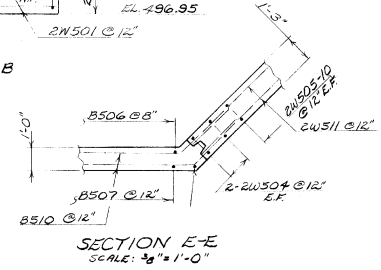
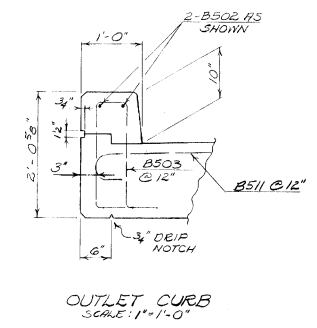
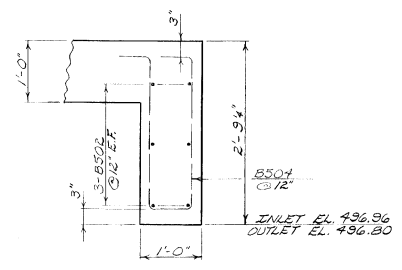
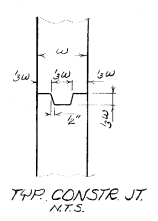
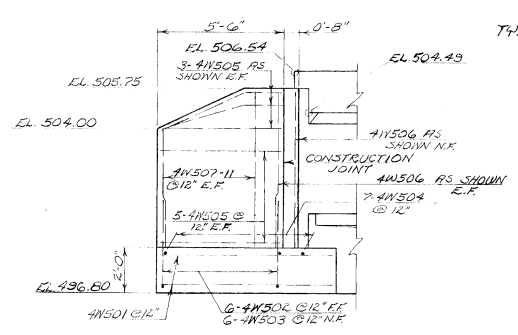
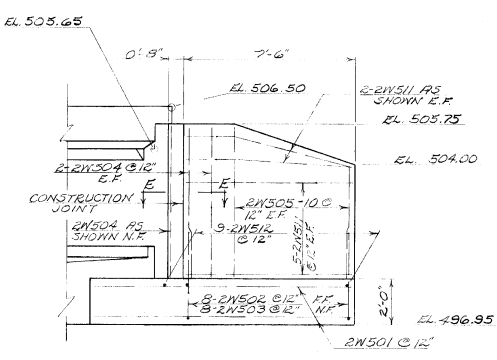
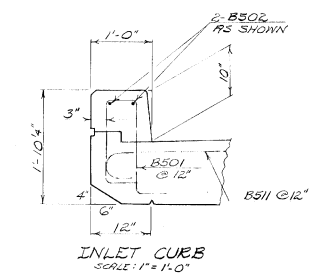
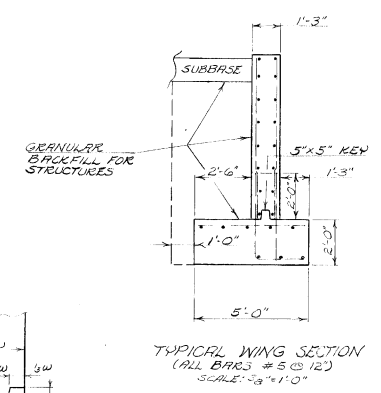
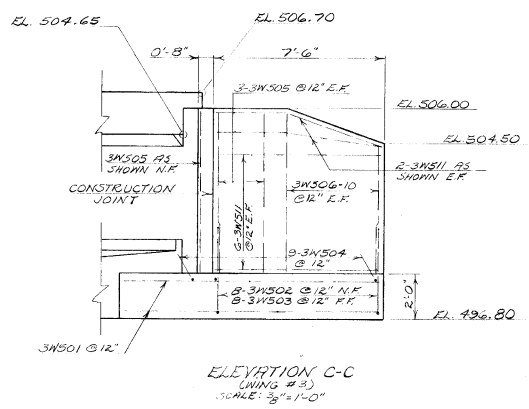
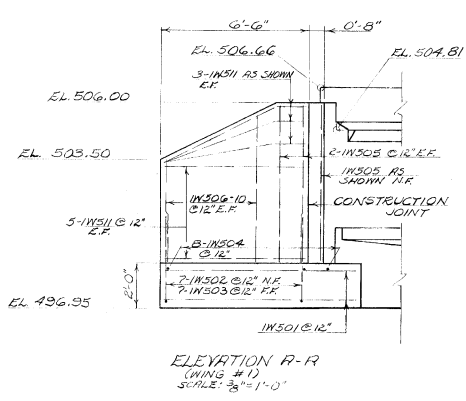
NOTES

1. ALL MATERIALS AND CONSTRUCTION SHALL CONFORM TO STATE OF VT. DEPT. OF HIGHWAYS, STD. SPECS. FOR HIGHWAY AND BRIDGE CONSTRUCTION DATED JAN. 1972 AND THE A.A.S.H.O. STD. SPECS. FOR HIGHWAY BRIDGES, CURRENT EDITION.
2. ALL CONCRETE IS TO BE CONCRETE, CLASS B. THE ROADWAY SURFACE SHALL BE LIGHTLY BROOMED AT RIGHT ANGLES TO THE CENTERLINE OF THE RDWH.
3. REINFORCING STEEL SHALL HAVE A CLEAR COVER OF 2" UNLESS OTHERWISE NOTED.
4. CHAMFER ALL EXPOSED CONCRETE EDGES 1" X 1".
5. ALL DIMENSIONS ARE HORIZONTAL OR VERTICAL.
6. DESIGN STRESSES:  
 CONCRETE  $F_c' = 3000$  P.S.I.,  $F_c = 1200$  P.S.I.  
 REINFORCING STEEL  $F_s = 20,000$  P.S.I. TENSION  
 $F_c = 16,000$  P.S.I. COMPRESSION
7. ALL ROADWAY AND BRIDGE RAILING POSTS AND HARDWARE SHALL BE GALVANIZED AFTER FABRICATION ACCORDING TO A.S.T.M. SPEC. A-123.
8. ROADWAY FILL SHALL BE MADE FROM STRUCTURE EXC.
9. BRIDGE RAILING INCLUDED IN ITEM FOR GUARD RAIL.

STATE OF VERMONT  
DEPARTMENT OF HIGHWAYS

TOWN OF	GUILDHALL	Bridge No.	#1
HIGHWAY NO.	TH #5	Log Sta.	
		Surv. Sta.	12+40
T.H. #5 OVER WASHBURN BROOK			
PLAN, PROFILE & DETAILS			
Designed by	J. WEAVER	Drawn by	J. WEAVER
Checked by	G. E. HOPKINS	Bridge Design Supervisor	
	date 9/21/74	J. WOOD	date 9/17/74
PROJECT	GUILDHALL	PROJECT NO.	TH 3525
Bridge Sheet No.		Sheet	2 of 13





STATE OF VERMONT DEPARTMENT OF HIGHWAYS	
TOWN OF <b>GUILDHALL</b>	Bridge No. <b>#1</b>
HIGHWAY NO. <b>TH #5</b>	Log Sta. <b>12140</b>
Surr. Sta. <b>12140</b>	
<b>T.H. #5 OVER WASHBURN BROOK</b>	
<b>WING ELEVATIONS &amp; DETAILS</b>	
Designed by <b>J. WEAVER</b>	Drawn by <b>J. WEAVER</b>
Checked by <b>GE Hopkins</b>	Bridge Design Supervisor
date <b>9/27/74</b>	date <b>9/74</b>
PROJECT <b>GUILDHALL</b>	PROJECT NO. <b>TH 3525</b>
Bridge Sheet No.	Sheet <b>4</b> of <b>13</b>





Sta. 4+57 End Unclass. Chan. Exc.  
End Stone Fill, Type II

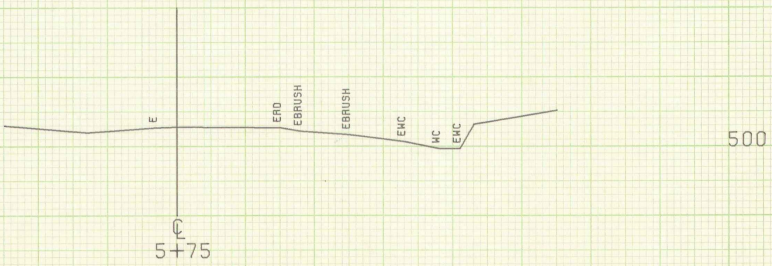
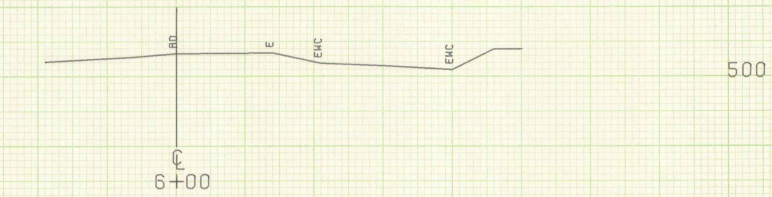
Sta. 4+46 Begin Structure Exc.  
Sta. 4+44 Begin Unclass. Chan. Exc.  
Begin Stone Fill, Type II

FROM STA. 3+50	TO STA. 4+50
PROJECT NAME GUILDHALL CHANNEL LINE	
NO. TH3525	PLOTTED 08/24/74
SURVEYED BY FANTONI	08/74
SHEET 6 OF 13 SHEETS	

SCALE 1" = 10 FEET

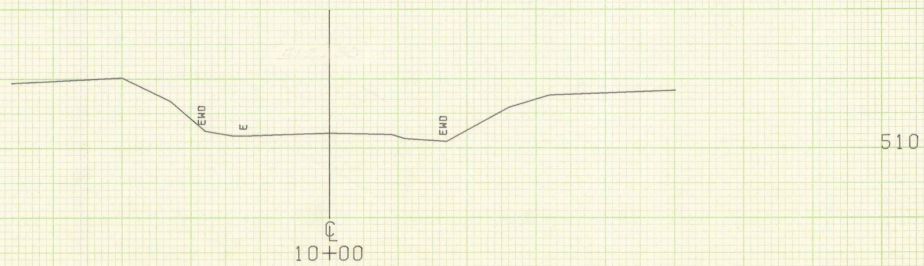
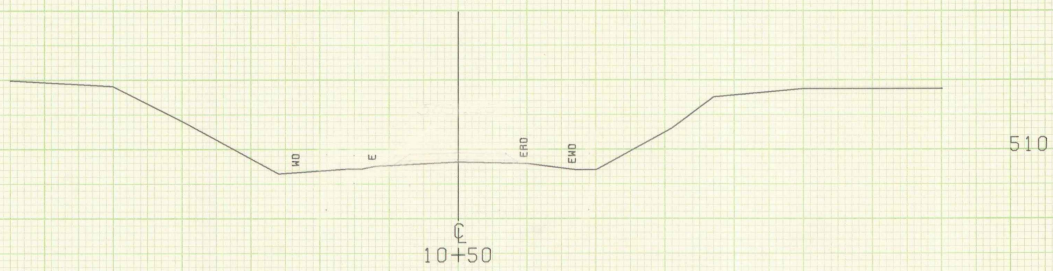
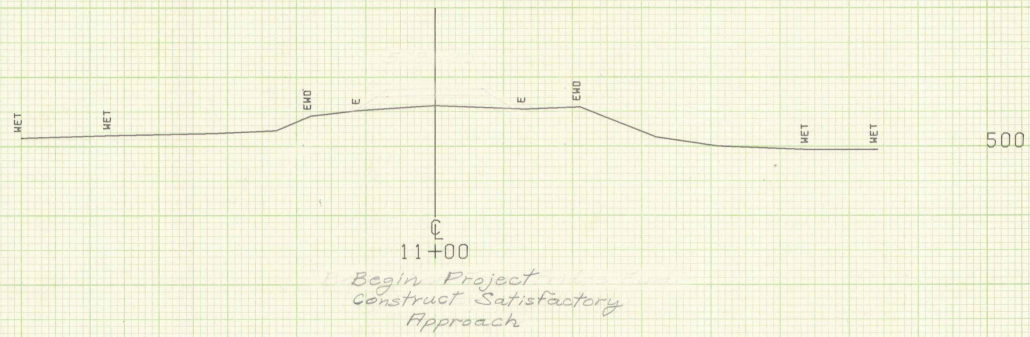
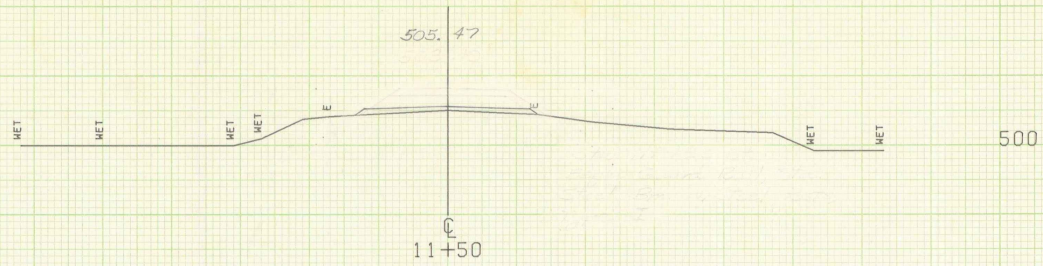






FROM STA. 5+75	TO STA. 6+00
PROJECT NAME	GUILDHALL CHANNEL LINE
NO.	TH3525
SURVEYED BY	FANTONI
SHEET 9	OF 13 SHEETS
	PLOTTED 08/24/74
	08/74

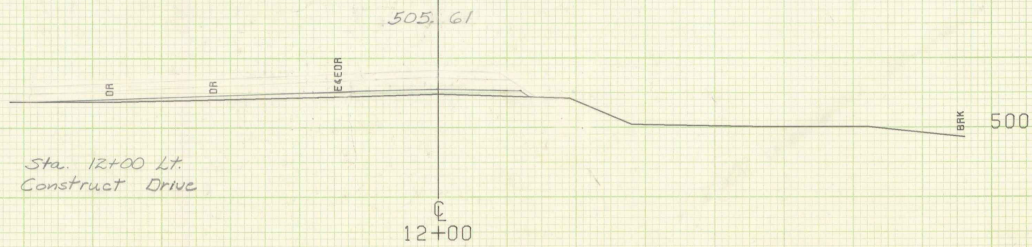
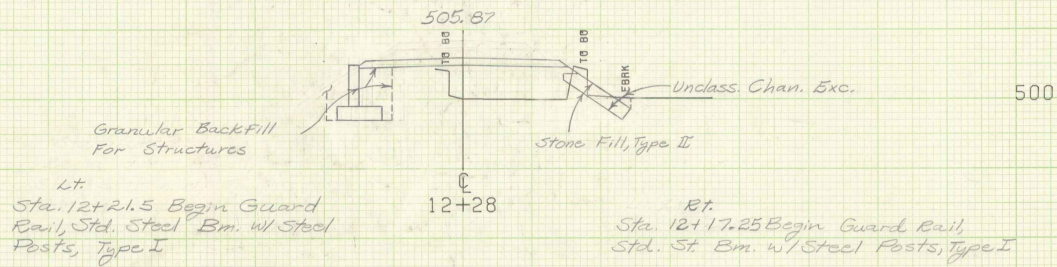
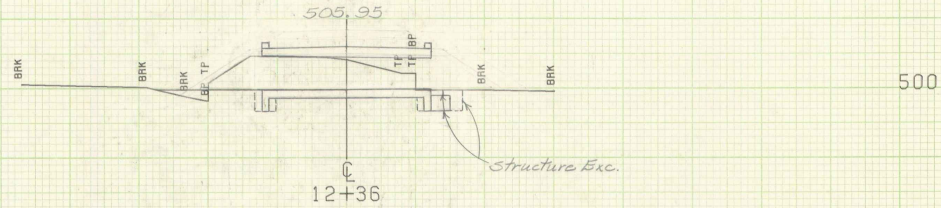
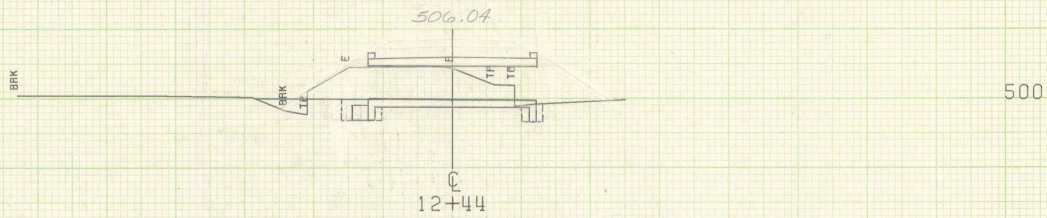
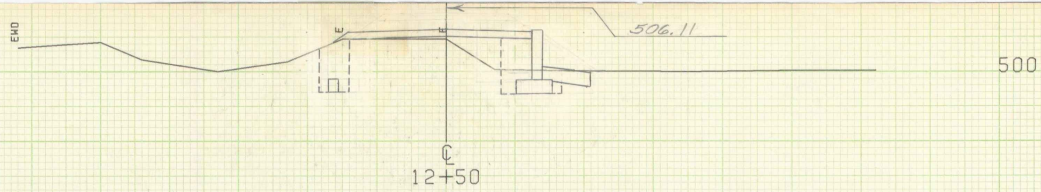
SCALE 1" = 10 FEET



715, 81 over

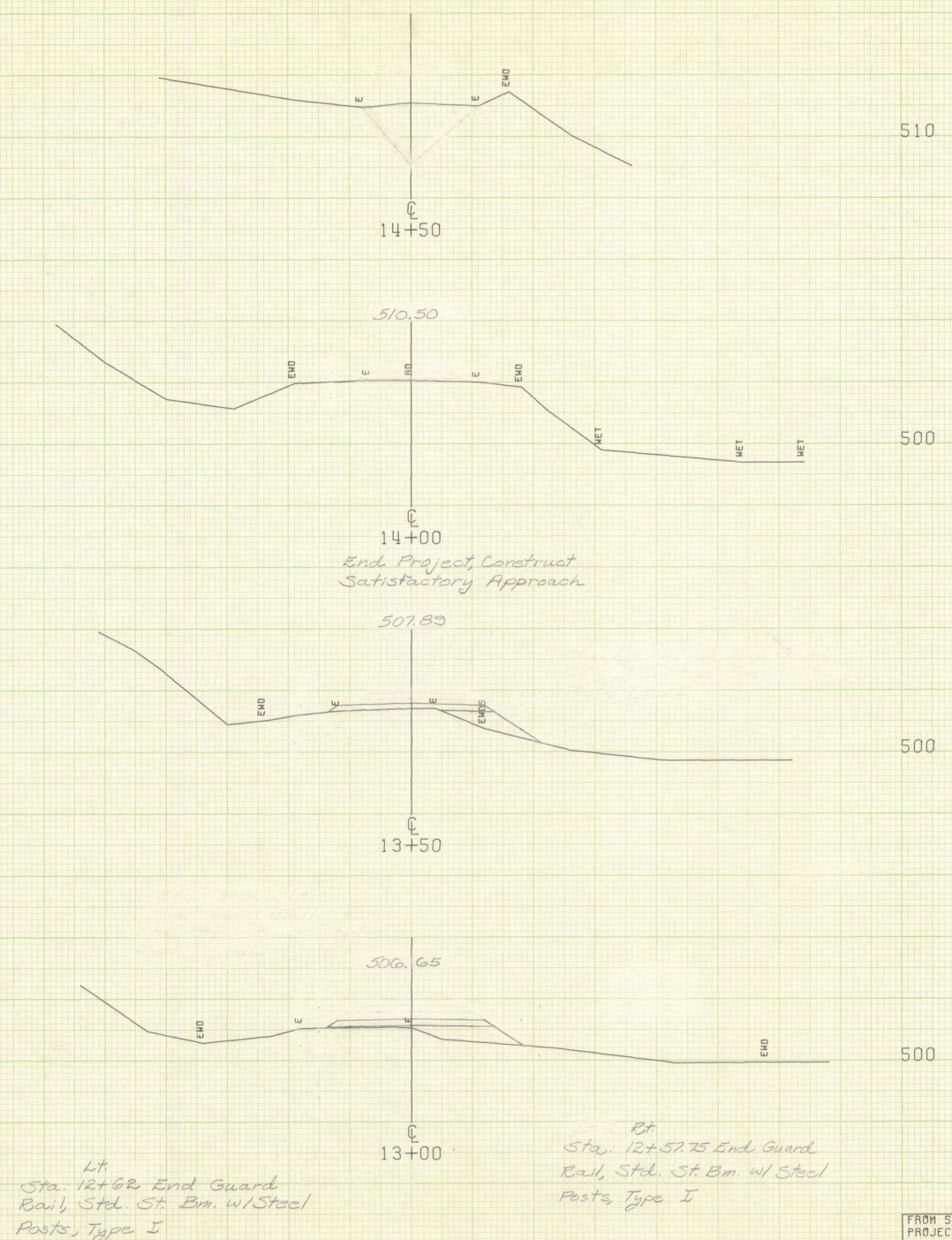
FROM STA. 10+00	TO STA. 11+50
PROJECT NAME	GUILDHALL MAIN LINE
NO.	743525
SURVEYED BY	FANTONI
	08/74
PLOTTED 08/24/74	
SHEET 10 OF 13 SHEETS	

SCALE 1" = 10 FEET



FROM STA. 12+00 TO STA. 12+50  
 PROJECT NAME GUILDHALL MAIN LINE  
 NO. TH3525 PLOTTED 08/24/74  
 SURVEYED BY FANTONI 08/74  
 SHEET 11 OF 13 SHEETS

SCALE 1" = 10 FEET



510

14+50

510.50

500

14+00

End Project, Construct Satisfactory Approach

507.89

500

13+50

506.65

500

13+00

Lt.  
Sta. 12+62 End Guard  
Rail, Std. St. Bm. w/ Steel  
Posts, Type I

Rt.  
Sta. 12+57.75 End Guard  
Rail, Std. St. Bm. w/ Steel  
Posts, Type I

FROM STA. 13+00	TO STA. 14+50
PROJECT NAME	GUILDHALL MAIN LINE
NO.	TH3525
SURVEYED BY	FANTONI
SHEET 12 OF 13 SHEETS	PLOTTED 08/24/74
	08/74

SCALE 1" = 10 FEET

Bridge  
1975

Guild Hall  
TH 3525

Vermont Agency of  
Transportation  
PHASE 1-INTERSTATE  
#122302-01  
INITIALS   
Box 1991  
DONE

1975