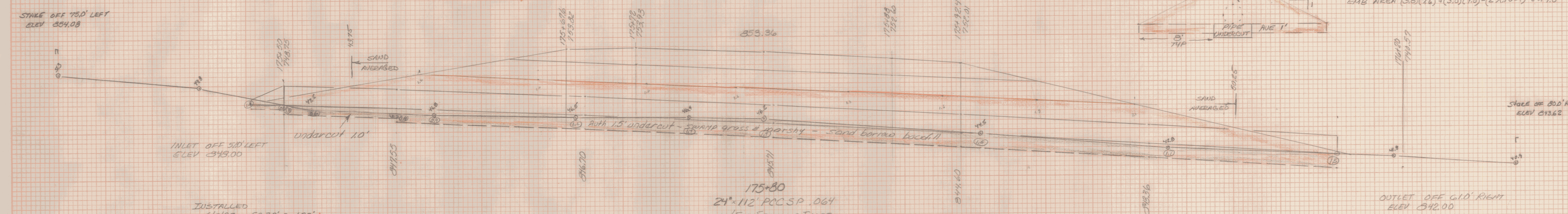
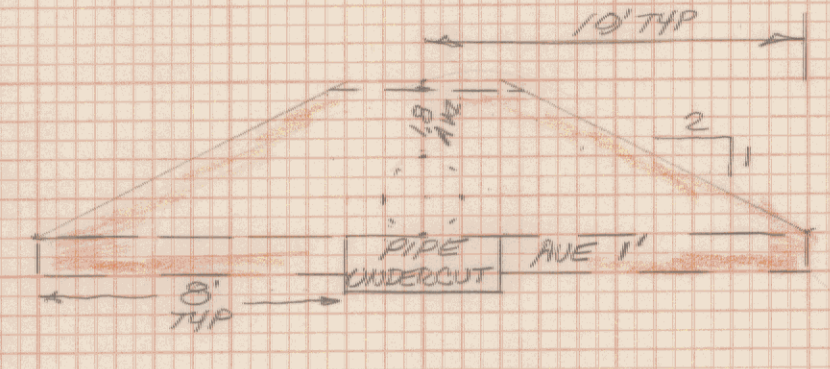


EAST MONTPELIER
RSECC-RS 0246(1)
DRAINAGE SHEET #3
SCALE = 1" = 5'

EMB AREA $(3.8)(26) + (3.8)(1.5) - (2)(.705^2) = 44.0$



INSTALLED
6/21/92 - 5820' = 100'
7/7/92 - 15.12' = 12"
7/7/92 6"WD SECTION
C.S.
7/21/92

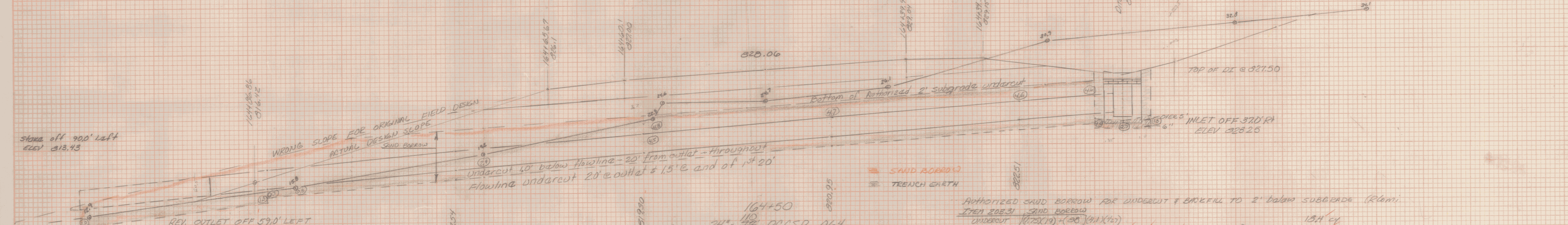
SAND BORROW
UNDERCUT
END SECTION $(2.5)(3)(3.5)(1/2)$ 0.2
PIPE $(10)(12) + (1.5)(100) + (4)(1)(1/2)$ 24.6
FILL $(10)(16)(1/2) + (4)(4)(9/16)(1/2)$ 21.9
244.4 CY
R.L.M. 7/23/92
10/21/92 7/24/92

175+80
24" x 112" PCC SP .064
w/ END SECTION & INLET
STONE PAD @ OUTLET
GRADE 4.72% w/ 6" CAMBER
54° RIGHT

TRENCH EXCAVATION
END SECTION $(3.8)(9.0)(3.5)(1/2)$ 0.3
PIPE $(10)(20) + (2.5)(9) + (1.5)(15) + (1.5)(12) + (1.5)(20) + (1.5)(10)(4)(1/2)$ 22.3
22.6 CY
Inlet stone fill - 2 pg 149
outlet stone fill - 2 pg 149
2.9 R.L.M. 7/24/92
30.5 CY R.L.M. 12-23-93
1.98.94

OUTLET OFF 610' RIGHT
ELEV 842.00

STONE OFF 610' RIGHT
ELEV 837.18

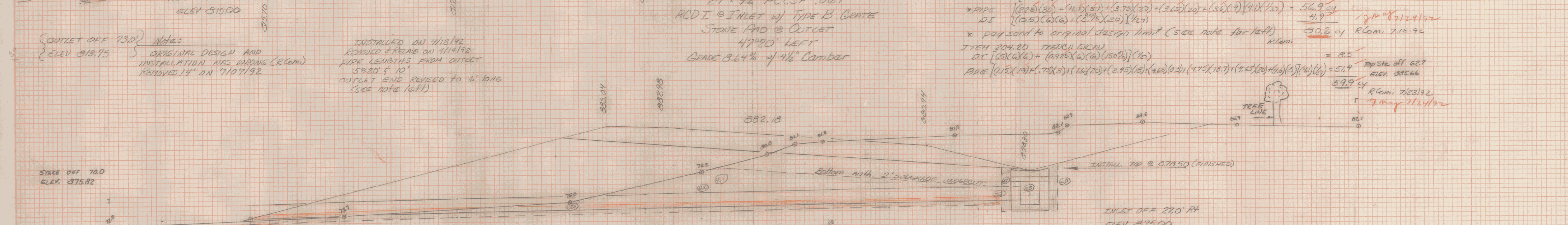


OUTLET OFF 730'
ELEV 818.75
Note:
ORIGINAL DESIGN AND
INSTALLATION WAS WRONG (R.L.M.)
REMOVED 14' ON 7/10/92

INSTALLED ON 4/13/92
REMOVED & REPAID ON 4/14/92
PIPE LENGTHS FROM OUTLET
5' 20' & 10'
OUTLET END REISED TO 6" LONG
(SEE NOTE LEFT)

164+50
24" x 112" PCC SP .064
RCI & INLET w/ TYPE B GATE
STONE PAD @ OUTLET
47°20' LEFT
GRADE 3.64% w/ 1/2" CAMBER

Authorized SAND BORROW FOR UNDERCUT & BACKFILL TO 2' BELOW SUBGRADE (R.L.M.)
ITEM 208.31 SAND BORROW
UNDERCUT $(1.5)(12) + (20)(4)(1/2)$ 18.4 CY
* PIPE $(22.5)(30) + (4)(1)(5.1) + (3.75)(20) + (3.6)(9)(4)(1/2)$ 56.9 CY
DI $(0.5)(6)(6) + (3.75)(20)(1/2)$ 41.9
* pay sand to original design limit (see note for left) 30.2 CY R.L.M. 7-15-92
ITEM 204.20 TRENCH EXCAV
DI $(3)(6)(6) + (2.75)(2)(6)(150\%) (1/2)$ 8.5
PIPE $(115)(10) + (75)(3) + (16)(20) + (2.75)(12) + (4.5)(6.2) + (4.75)(10.7) + (4.15)(20) + (4)(5)(5)(1/2)$ 51.4
59.9 CY
Top stk off 62.7
ELEV. 885.66
R.L.M. 7/23/92
9/21/92



OUTLET OFF 550' LEFT
ELEV 873.50

INSTALLED ENTIRE PIPE ON 6/26/92
PIPE LENGTHS FROM OUTLET
10'-12'-20'-20'

156+45
18" x 82" PCC SP .064
RCI & INLET, w/ TYPE B GATE
@ 90°
GRADE 1.829% w/ 2" CAMBER

TRENCH EXCAVATION
DROP INLET $(4)(3)(3) + (4.75)(3)(6)(1/2)$ 6.2
PIPE 100% $(0.5)(10) + (0.875)(24) + (2.75)(14) + (4.75)(1.5) + (3.4)(30.5)(6)(1/2)$ 24.1
30.3 CY
R.L.M. 7/14/92

INLET OFF 270' RT
ELEV 875.00
POURED DI ON 6/26/92 then buried.
Authorized 6" undercut of flowline throughout
pay sand borrow in undercut & 6" up on pipe
Backfilled pipe w/ excavation

DATE	
BY	
REVISION	
NO.	
DESCRIPTION	
DATE	
BY	
REVISION	
NO.	
DESCRIPTION	
DATE	
BY	
REVISION	
NO.	
DESCRIPTION	

DATE	
BY	
REVISION	
NO.	
DESCRIPTION	
DATE	
BY	
REVISION	
NO.	
DESCRIPTION	
DATE	
BY	
REVISION	
NO.	
DESCRIPTION	