

INDEX OF SHEETS

1.	TITLE SHEET	
2-4.	TYPICAL SHEETS	
5-6.	QUANTITY SHEETS	
7-8.	ITEM DETAIL AND DRAINAGE SHEETS	
9-11.	GRADE AND EARTHWORK SHEETS	
12-16.	R.O.W. DETAIL SHEETS	
17-21.	R.O.W. PLAN SHEETS	
22.	BLANK	
23.	TIE DETAIL SHEET	
24-30.	PLAN AND PROFILE SHEETS	
31-34.	TRAFFIC SIGN AND PAVEMENT MARKING SHEETS	
35.	MAILBOX DETAILS	
36-98.	CROSS SECTION SHEETS	
99-100.	SUPERELEVATION DIAGRAMS	
101.	A-62 SLOPES IN SOLID ROCK EXCAV. (400 VPD & OVER)	04-02-86
102.	B-5 SLOPE GRADING, EMBANKMENTS, MUCK	12-06-71
103.	D-2 C.R.M. HEADWALLS, UNDERDRAIN	10-30-85 R
104.	D-3 TREATED GUTTERS	04-02-86
105.	D-4 FLUSHING BASINS, END SECTION, ELBOWS	10-30-85 R
106.	D-6 REINF. CONCRETE DROP INLET W/GRATE (DITCHES)	04-04-73
107.	D-8 REINFORCED CONCRETE DROP INLET	12-06-71
108.	D-16 PRECAST CURB DI, GRATE, RCP END SECTION, ETC.	10-30-85 R
109.	E-100 CONSTRUCTION APPROACH SIGNS	05-26-89 R
110.	E-101 CONSTRUCTION SIGN DETAILS	10-30-87
111.	E-102 CONSTRUCTION SIGN DETAILS	01-23-89 R
112.	E-106 TRAFFIC CONTROL - MISCELLANEOUS DETAILS	01-23-89 R
113.	E-107 DELINEATION, BARRICADES AND DETOURS FOR CONSTRUCTION AREAS	04-29-88 R
114.	E-107A BREAKAWAY BARRICADE DETAILS	09-10-87
115.	E-110 MAJOR MAINTENANCE OPERATION LANE CLOSURE	03-01-88 R
116.	E-121 STANDARD SIGN PLACEMENT - CONVENTIONAL ROAD	01-23-89
117.	E-141 REGULATORY SIGN DETAILS	10-30-87
118.	E-142 REGULATORY SIGN DETAILS	10-30-87
119.	E-143 REGULATORY SIGN DETAILS	10-30-87
120.	E-150 WARNING SIGN DETAILS	10-30-87
121.	E-152 WARNING SIGN DETAILS	10-30-87
122.	E-160 FLANGED CHANNEL STEEL SIGN POST DETAIL	03-01-88 R
123.	E-191 PAVEMENT MARKING DETAILS	01-23-89 R
124.	G-4 MARKERS - GUIDE POSTS - PLANK GUARD RAIL	10-31-85 R
125.	J-1 BOUNDARY MARKERS	06-27-80
126.	J-5 TREE BRACING DETAILS	12-19-72 R
127.	T-1 TEMPORARY EROSION CONTROL DETAILS	12-07-76 R
128.	T-2 TEMPORARY EROSION CONTROL DETAILS	07-05-72

# STATE OF VERMONT AGENCY OF TRANSPORTATION

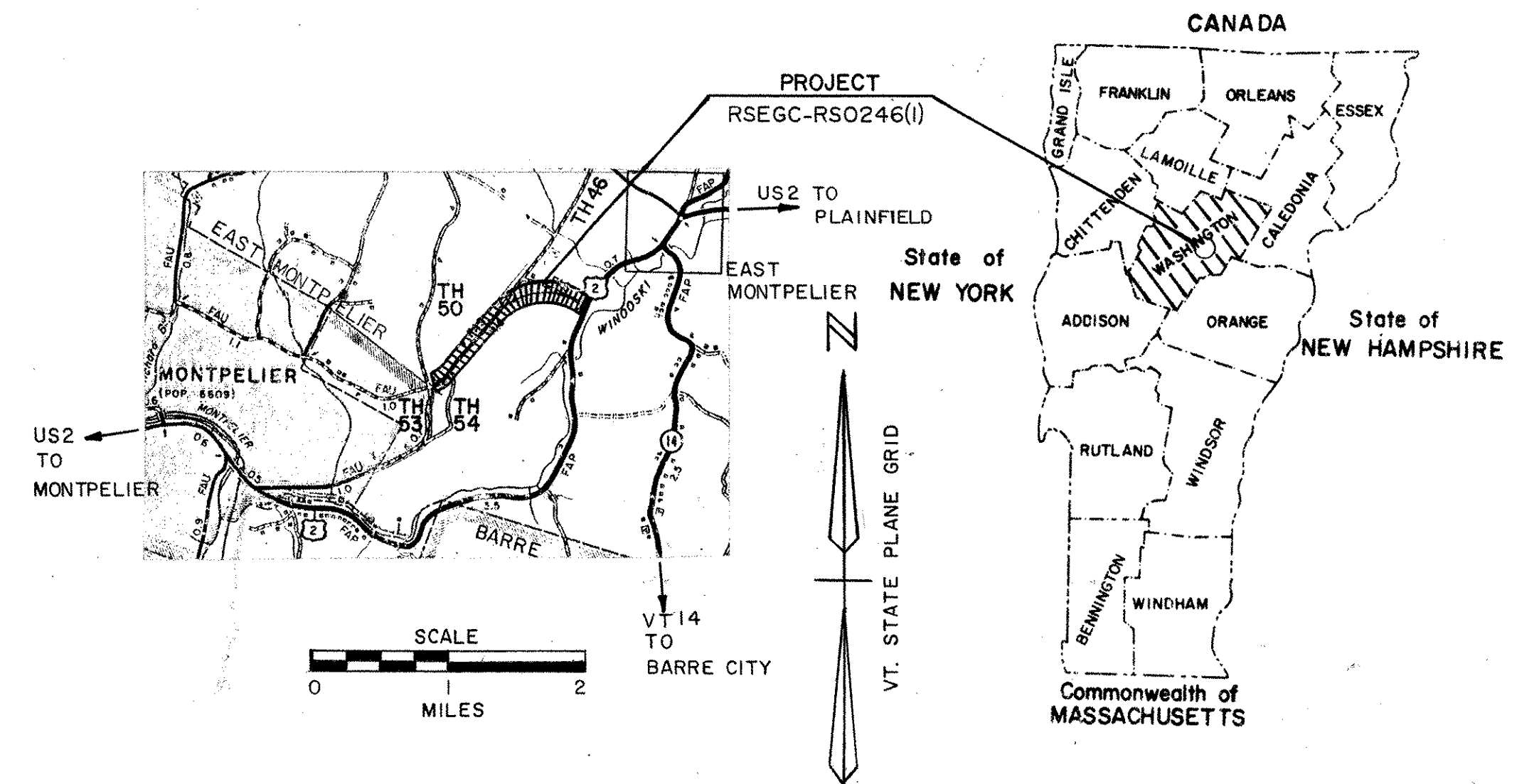


## PROPOSED IMPROVEMENT TOWN OF EAST MONTPELIER COUNTY OF WASHINGTON T.H. 2 (CL. 2)(F.A.S.)

BEGINNING AT A POINT ON TH 2 APPROXIMATELY 1.004 MILE NORTHEASTERLY OF THE MONTPELIER CITY-EAST MONTPELIER TOWN LINE AND EXTENDING, NORTHEASTERLY 1.371 MILES

LENGTH OF ROADWAY = 7239.96 FEET = 1.371 MILES  
LENGTH OF PROJECT = 7239.96 FEET = 1.371 MILES

WORK TO BE DONE UNDER THIS PROJECT INCLUDES GRADING, NEW DRAINAGE, SUBBASE AND PAVEMENT ON PARTIAL RELOCATION.



### RECORD PLANS

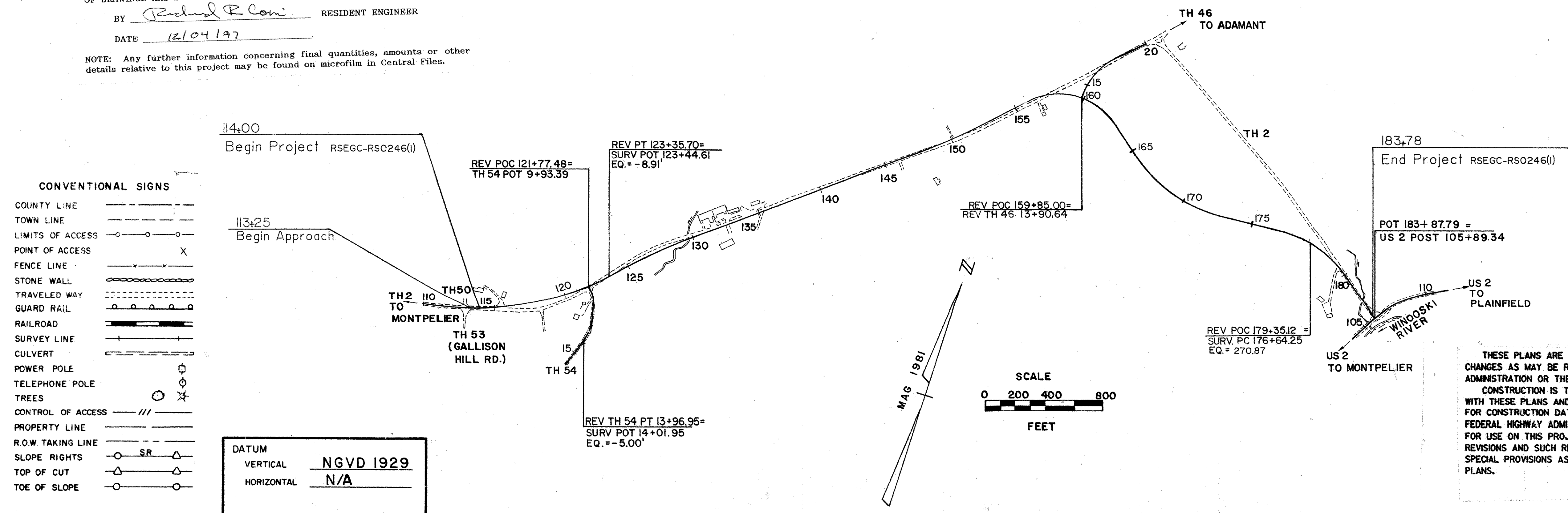
CONTRACTOR: AMWEST SURETY INS. CO. & EARTH CONST. INC. - GROTON, VT  
RESIDENT ENGINEER: RICHARD R. COMI  
CONSTRUCTION BEGAN: 11-27-91  
CONSTRUCTION COMPLETED: 12-02-93  
RECORD PLANS BY: RICHARD R. COMI & F. DONALD

I HEREBY CERTIFY THAT ALL THE CONSTRUCTION REQUIRED BY THIS SET OF DRAWINGS HAS BEEN ACCOMPLISHED AS INDICATED HEREIN.

BY Richard R. Comi RESIDENT ENGINEER  
DATE 12/04/97

NOTE: Any further information concerning final quantities, amounts or other details relative to this project may be found on microfilm in Central Files.

TRAFFIC DATA  
1990 ADT 860  
2010 ADT 1175  
2010 DHV 165  
D 66%  
T 2%  
V 40 MPH



### PROJECT PROCESSED UNDER SECONDARY ROAD PLAN

THESE PLANS ARE SUBJECT TO SUCH ENGINEERING CHANGES AS MAY BE REQUIRED BY THE FEDERAL HIGHWAY ADMINISTRATION OR THE CHIEF ENGINEER. CONSTRUCTION IS TO BE CARRIED ON IN ACCORDANCE WITH THESE PLANS AND THE STANDARD SPECIFICATIONS FOR CONSTRUCTION DATED 1990, AS APPROVED BY THE FEDERAL HIGHWAY ADMINISTRATION ON MARCH 15, 1990 FOR USE ON THIS PROJECT, INCLUDING ALL SUBSEQUENT REVISIONS AND SUCH REVISED SPECIFICATIONS AND SPECIAL PROVISIONS AS ARE INCORPORATED IN THESE PLANS.

SUBMITTED BY ORDER OF THE STATE TRANSPORTATION BOARD  
APPROVED Stephen S. MacArthur DATE 2/13/91  
DIRECTOR OF PLANNING & PRECONSTRUCTION  
DEPARTMENT OF TRANSPORTATION  
FEDERAL HIGHWAY ADMINISTRATION  
APPROVED \_\_\_\_\_ DATE \_\_\_\_\_  
DIVISION ADMINISTRATOR  
EAST MONTPELIER  
PROJECT RSEGC-RS0246(I)  
SHEET 1 OF 128 SHEETS