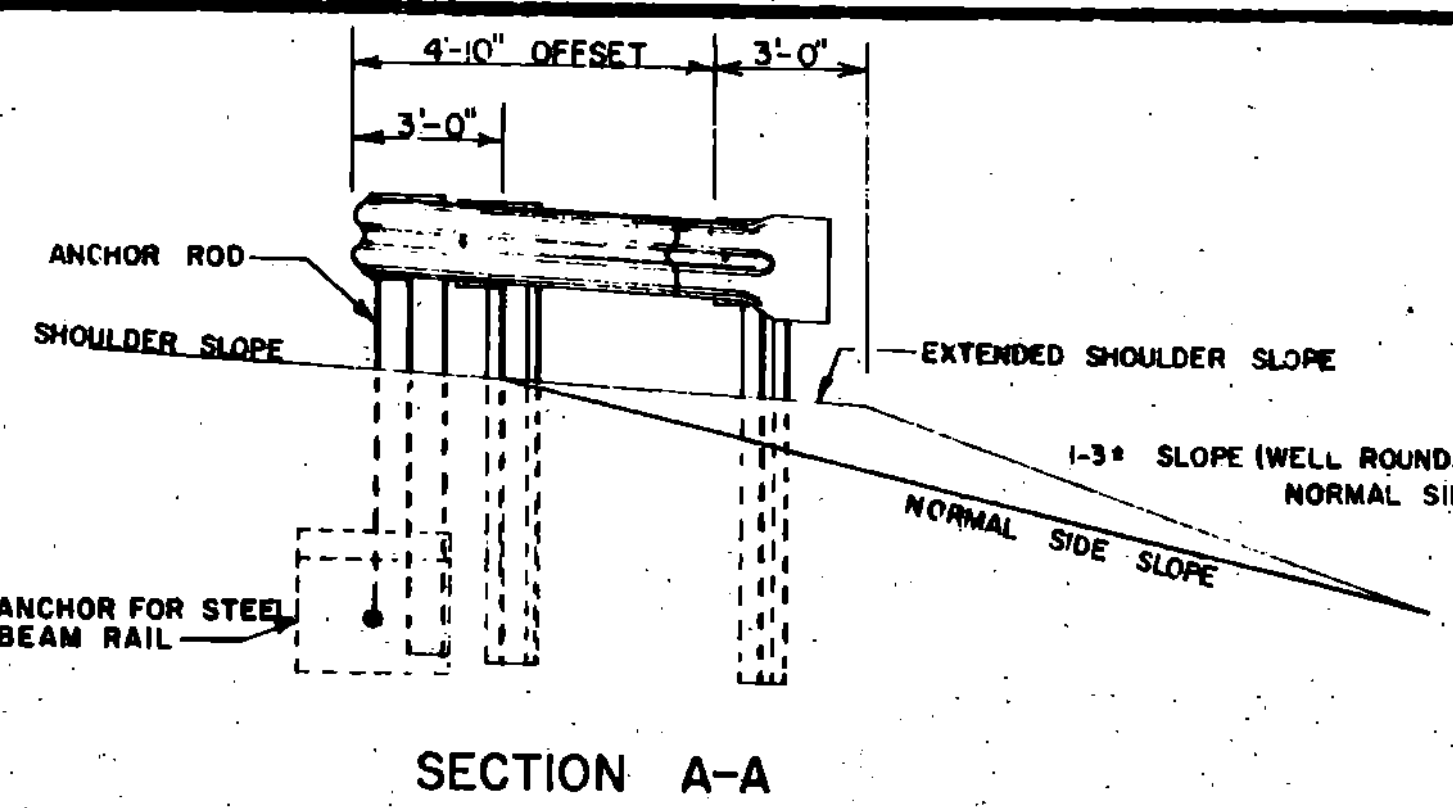
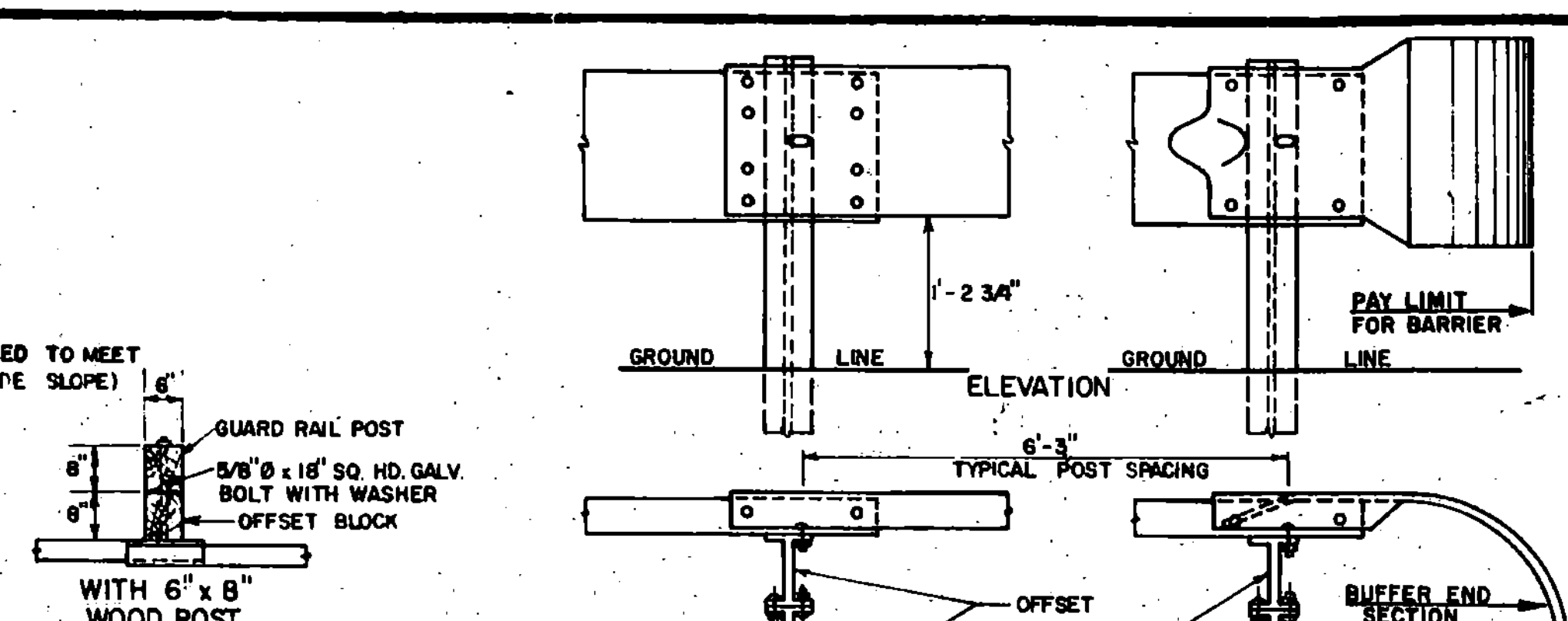


APPROACH END DETAIL
(NOT APPROVED FOR USE WHERE V > 40 MPH)

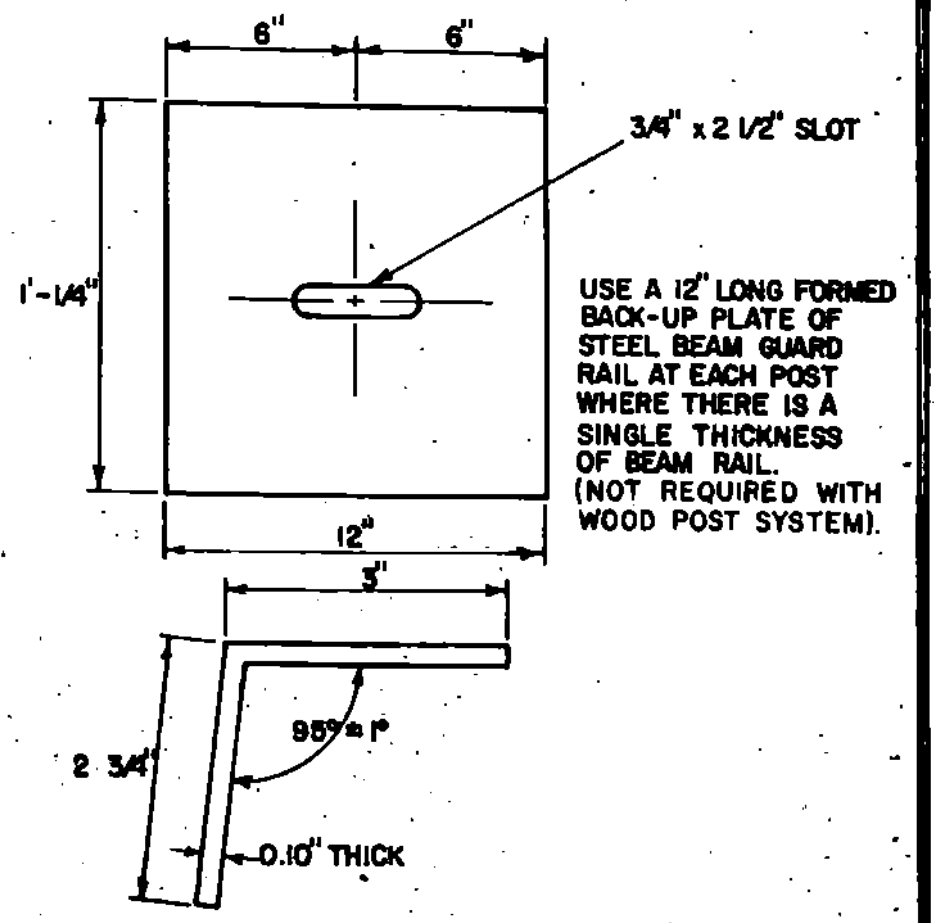


SECTION A-A

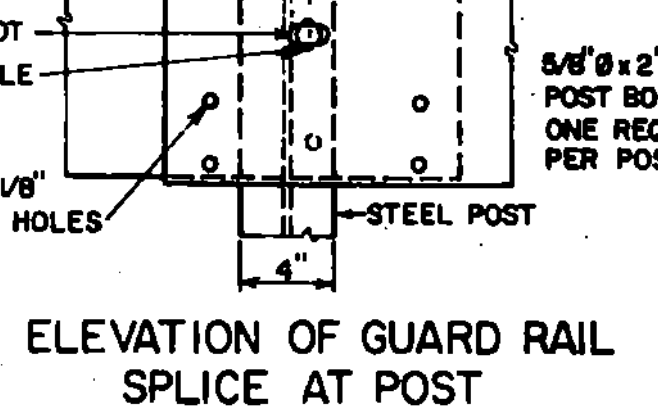
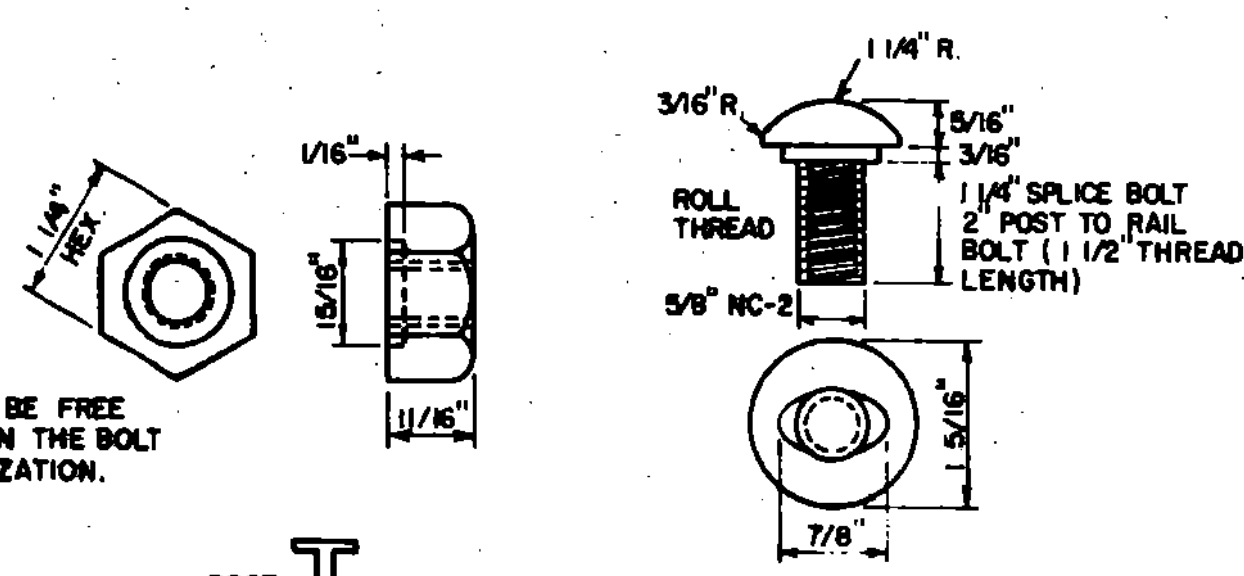


STEEL BEAM MEDIAN BARRIER

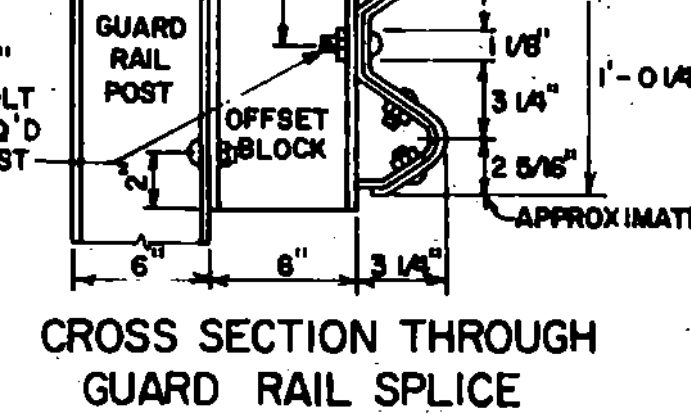
BARRIER END



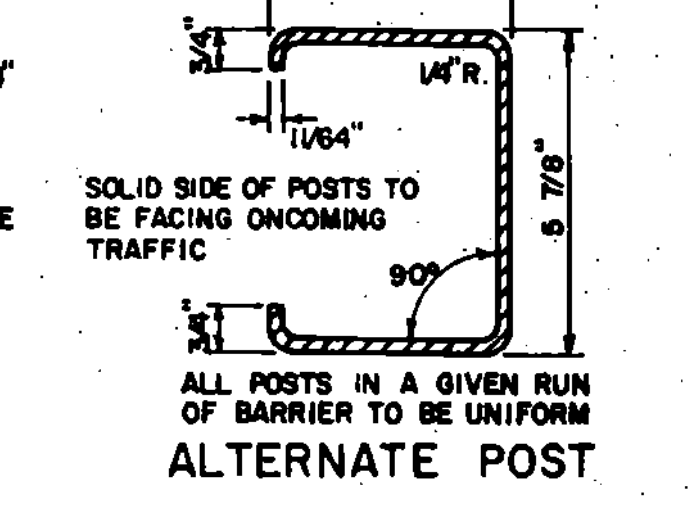
USE A 12\"/>



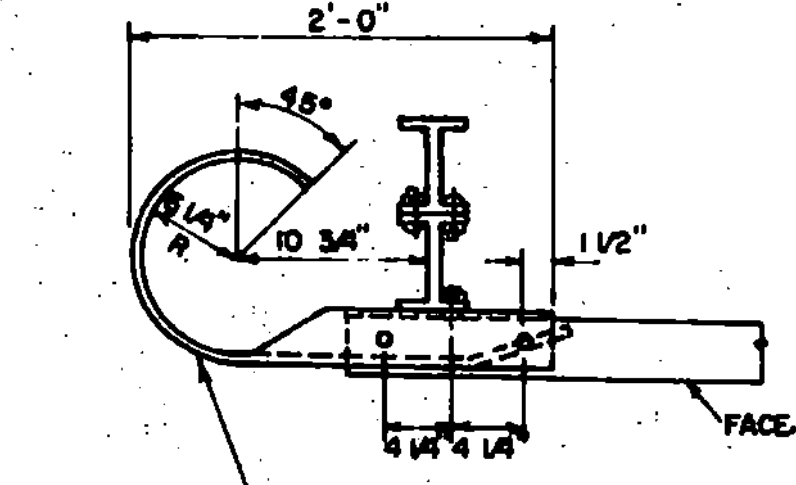
ELEVATION OF GUARD RAIL SPLICE AT POST



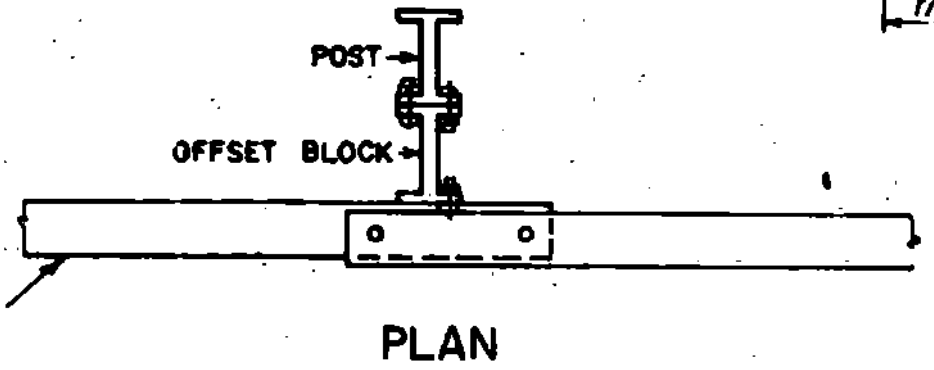
CROSS SECTION THROUGH GUARD RAIL SPLICE



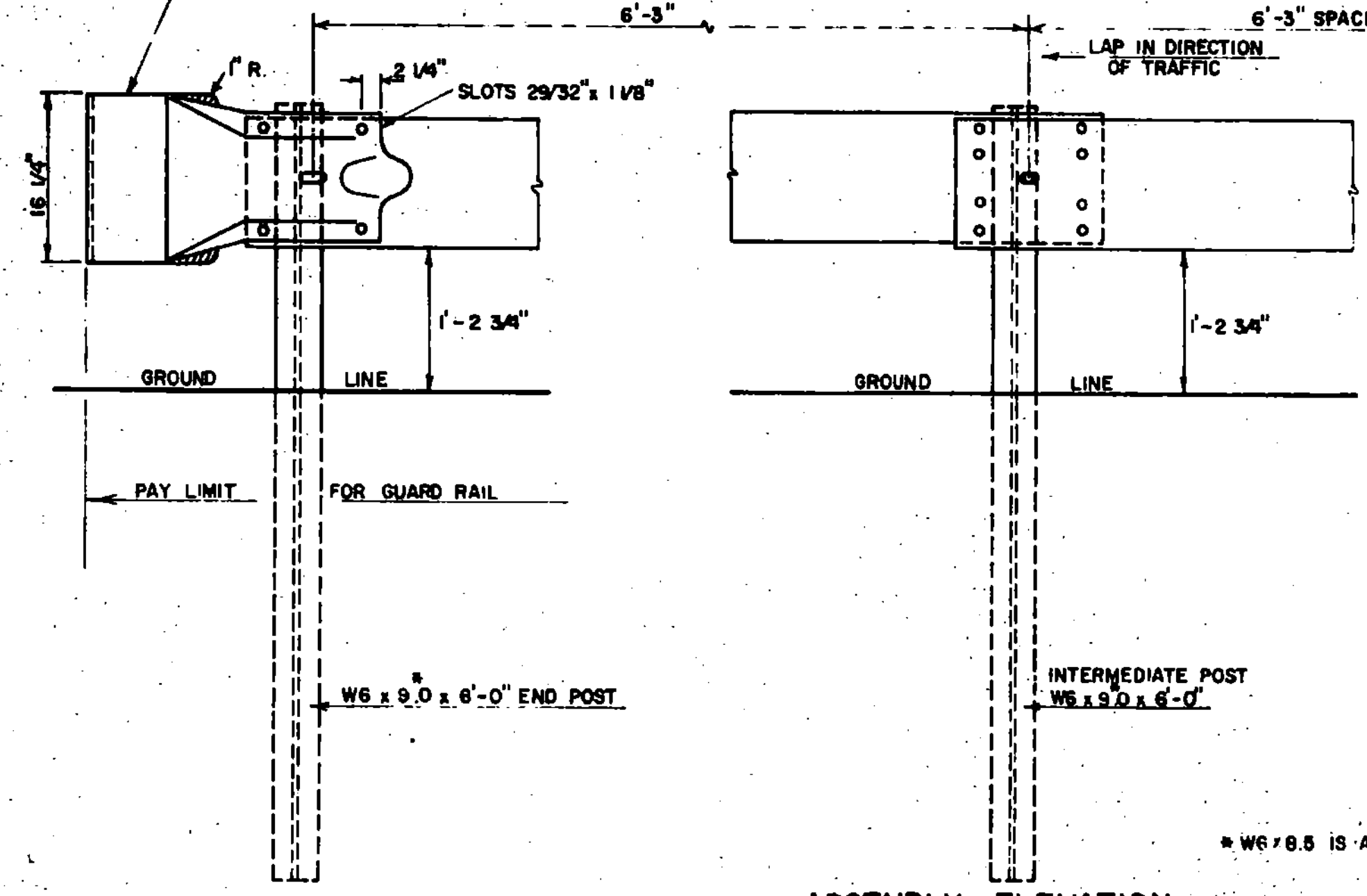
ALTERNATE POST



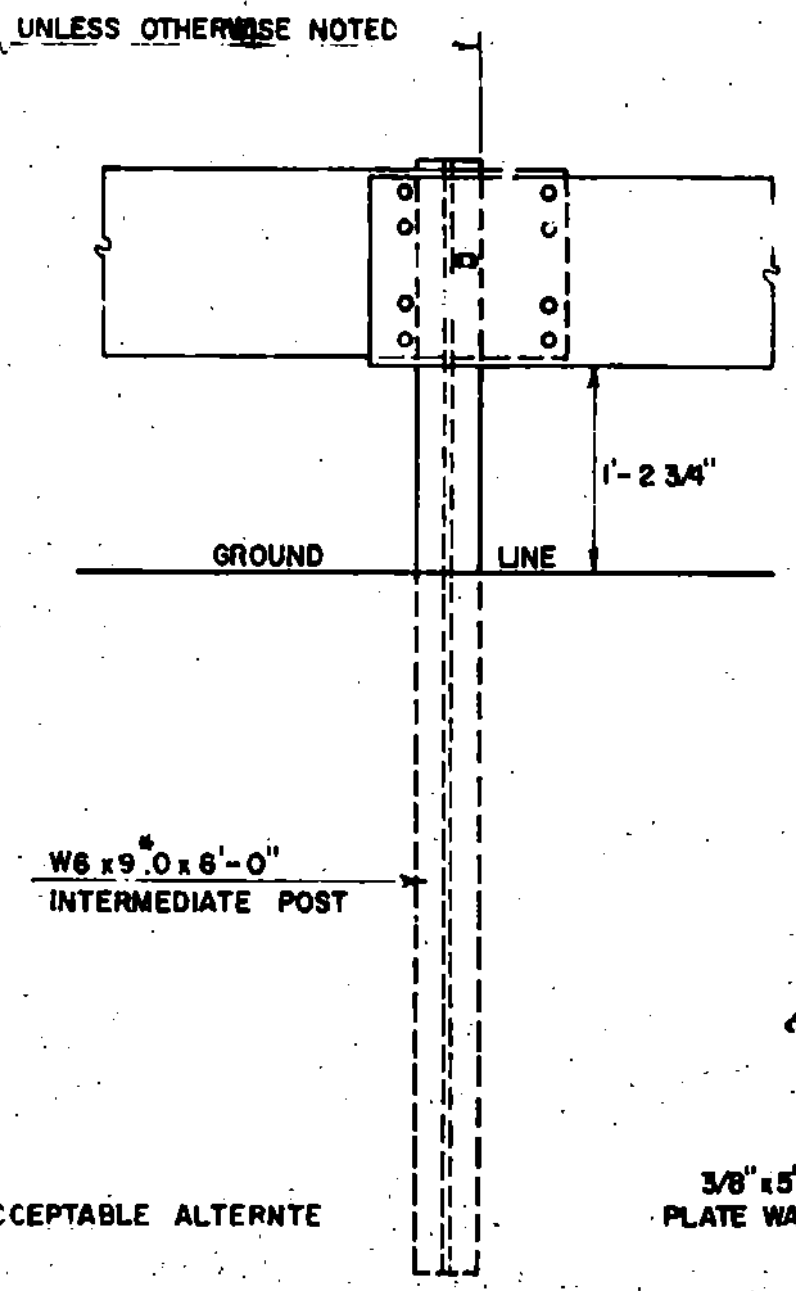
TERMINAL END SECTION



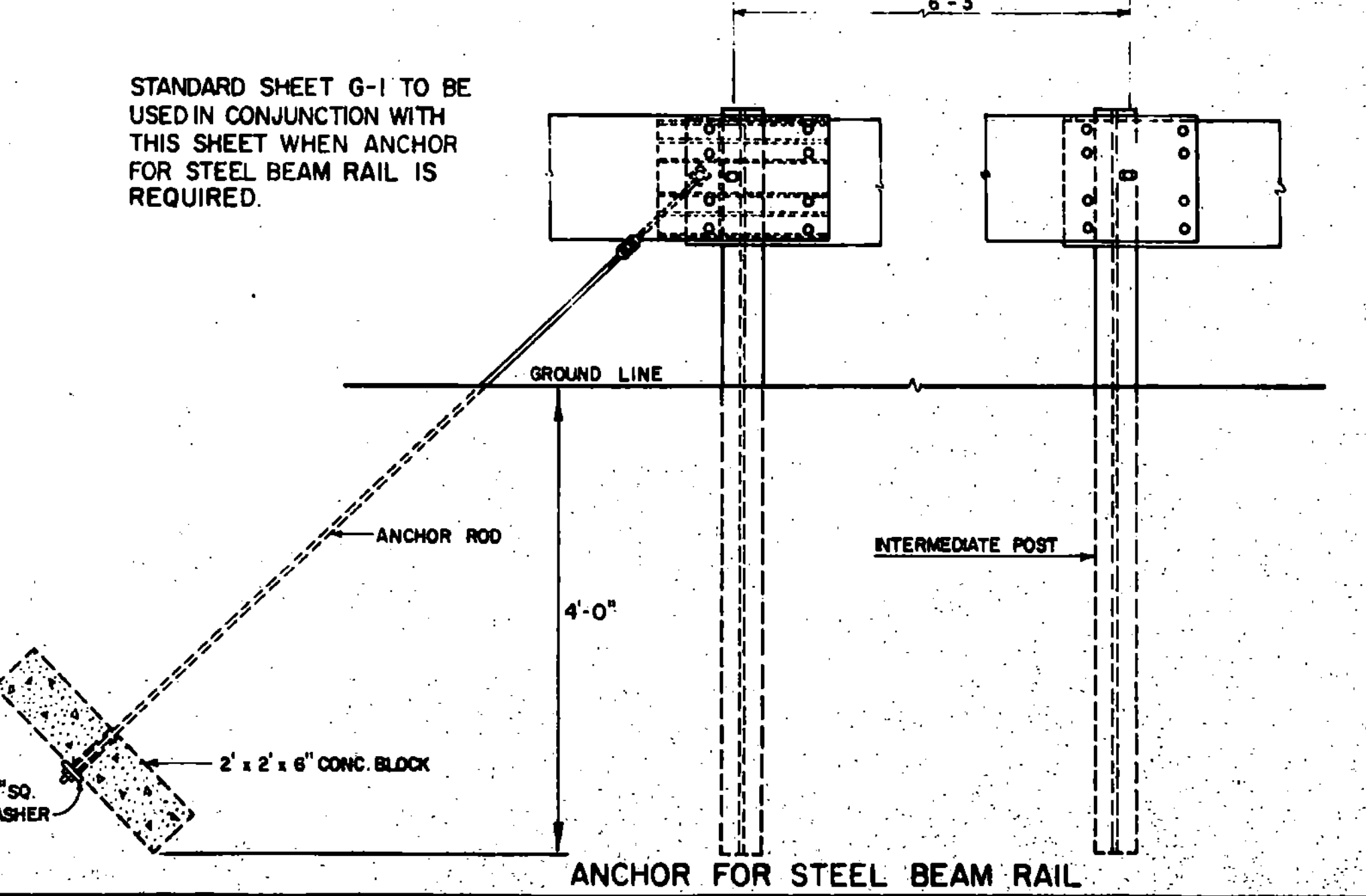
PLAN



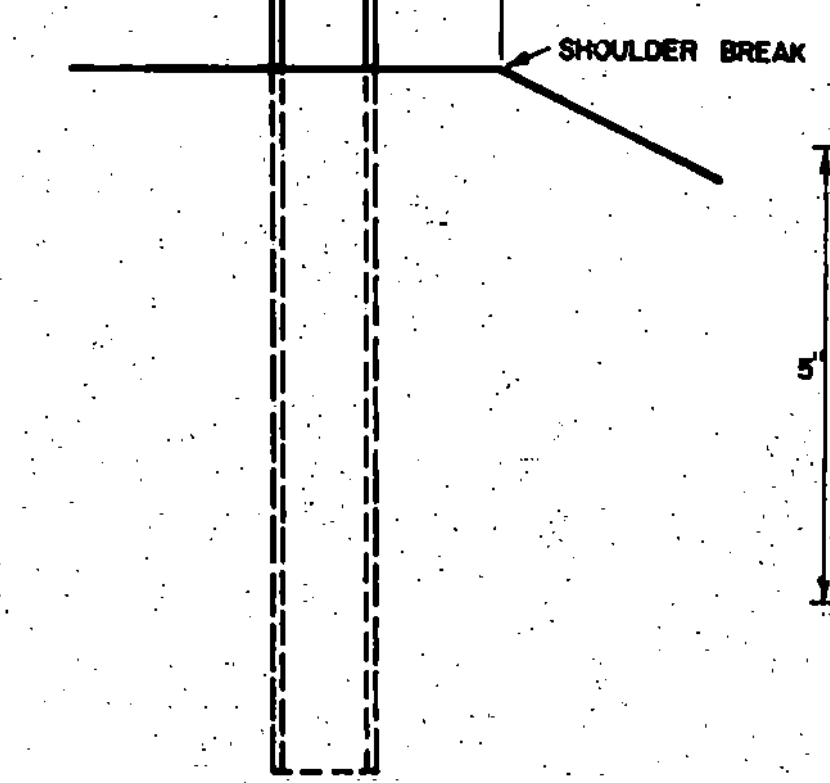
ASSEMBLY ELEVATION



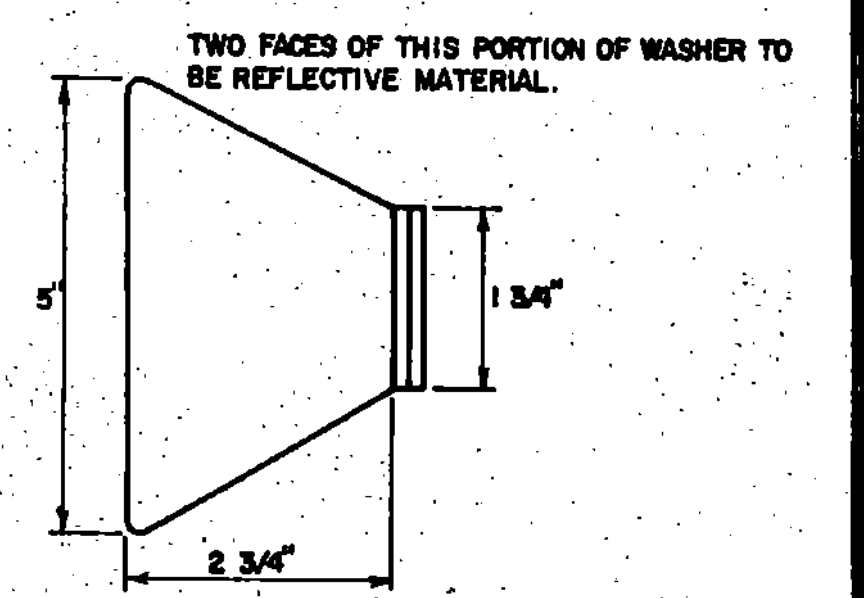
INTERMEDIATE POST



ANCHOR FOR STEEL BEAM RAIL



SIDE ELEVATION OF POST FOR SHOULDER OR MEDIAN INSTALLATION



TWO FACES OF THIS PORTION OF WASHER TO BE REFLECTIVE MATERIAL.

BEAM	MIN. GAGE	TENSILE STRENGTH (LBS)	RAIL OR JOINT			
			BEAM STRENGTH		BEAM STRENGTH	
			LOAD (LBS)	MAXIMUM DEFLECTION (INCHES)	LOAD (LBS)	MAXIMUM DEFLECTION (INCHES)
STANDARD	12	80,000	1,800	2"	1,200	2"
			2,000	3"	1,600	3"
HEAVY DUTY	10	100,000	2,000	2"	1,800	2"
			3,000	3"	2,400	3"

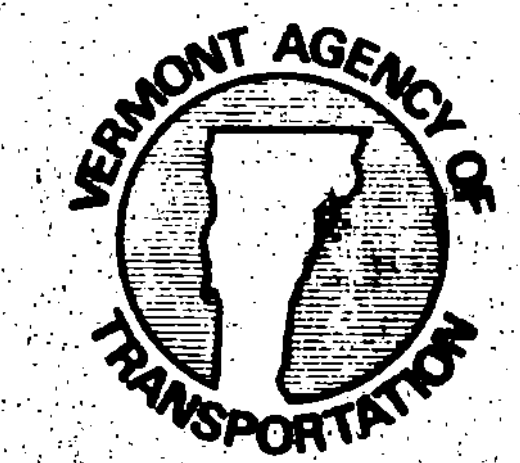
STRENGTH - THE RAIL ELEMENT SHALL BE DESIGNED TO MEET THE REQUIREMENTS OF THE ABOVE TABLE. THE POST CONNECTION SHALL WITHSTAND A 5,000 POUND SIDE PULL IN EITHER DIRECTION. ALL METAL PARTS SHALL BE GALVANIZED. ALL WOOD POSTS SHALL BE GIVEN A PRESERVATIVE TREATMENT.

STANDARD STEEL BEAM TO BE 12 GAGE AND THE HEAVY DUTY TO BE 10 GAGE.

- REVISIONS & CORRECTIONS**
- SEPT. 10, 1976 - MINIMUM LENGTH & ADVANCE OF NEED NOTES REMOVED.
 - MAR. 2, 1977 - ROUND WOOD POSTS REMOVED.
 - SEPT. 12, 1977 - REFERENCE TO ROUND WOOD POSTS REMOVED.
 - MAY 29, 1979 - NOTE ON REFLECTIVE MATERIAL CHANGED
 - APRIL 28, 1980 - APPROACH END DETAILS REDRAWN
 - DEC. 16, 1980 - INCREASED SHOULDER WIDENING FOR GUARD RAIL.
 - JUNE 5, 1984 - POST SIZE AND BACK UP PLATE NOTE CHANGED.
 - DEC. 21, 1984 - REMOVED POST WASHER
 - OCT. 31, 1985 - REVISED TO CONFORM WITH 1986 SPECIFICATIONS

APPROVED: *May 6, 1976*
DATE
E. H. Stuenkel
CHIEF ENGINEER
R. O. Munn
ASST. CHIEF ENGINEER
Louise E. Jones
HIGHWAY ENGINEER

STEEL BEAM GUARD RAIL
HEAVY DUTY STEEL BEAM GUARD RAIL
STEEL BEAM MEDIAN BARRIER
ANCHOR FOR STEEL BEAM RAIL



STANDARD
G-1d