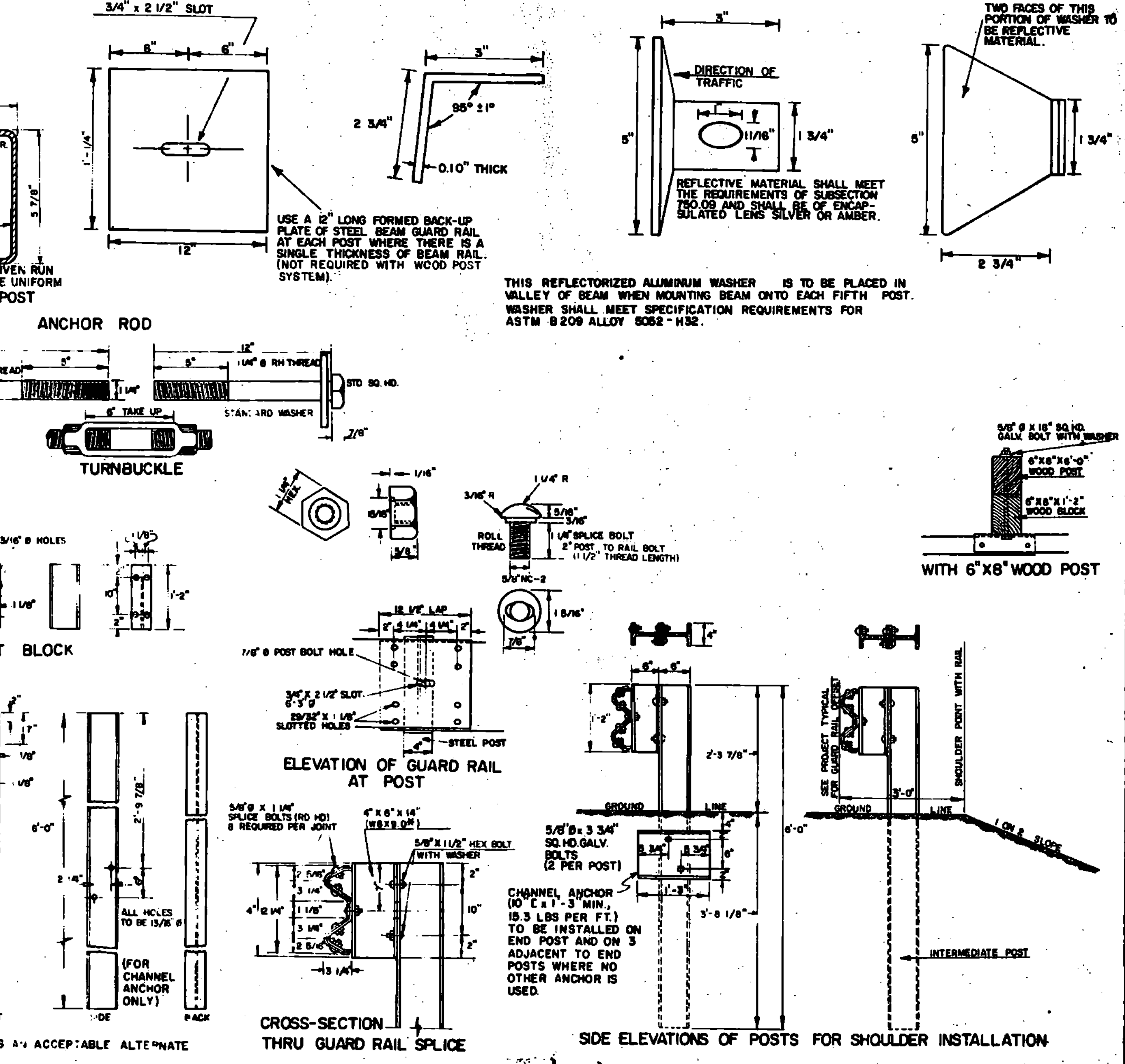
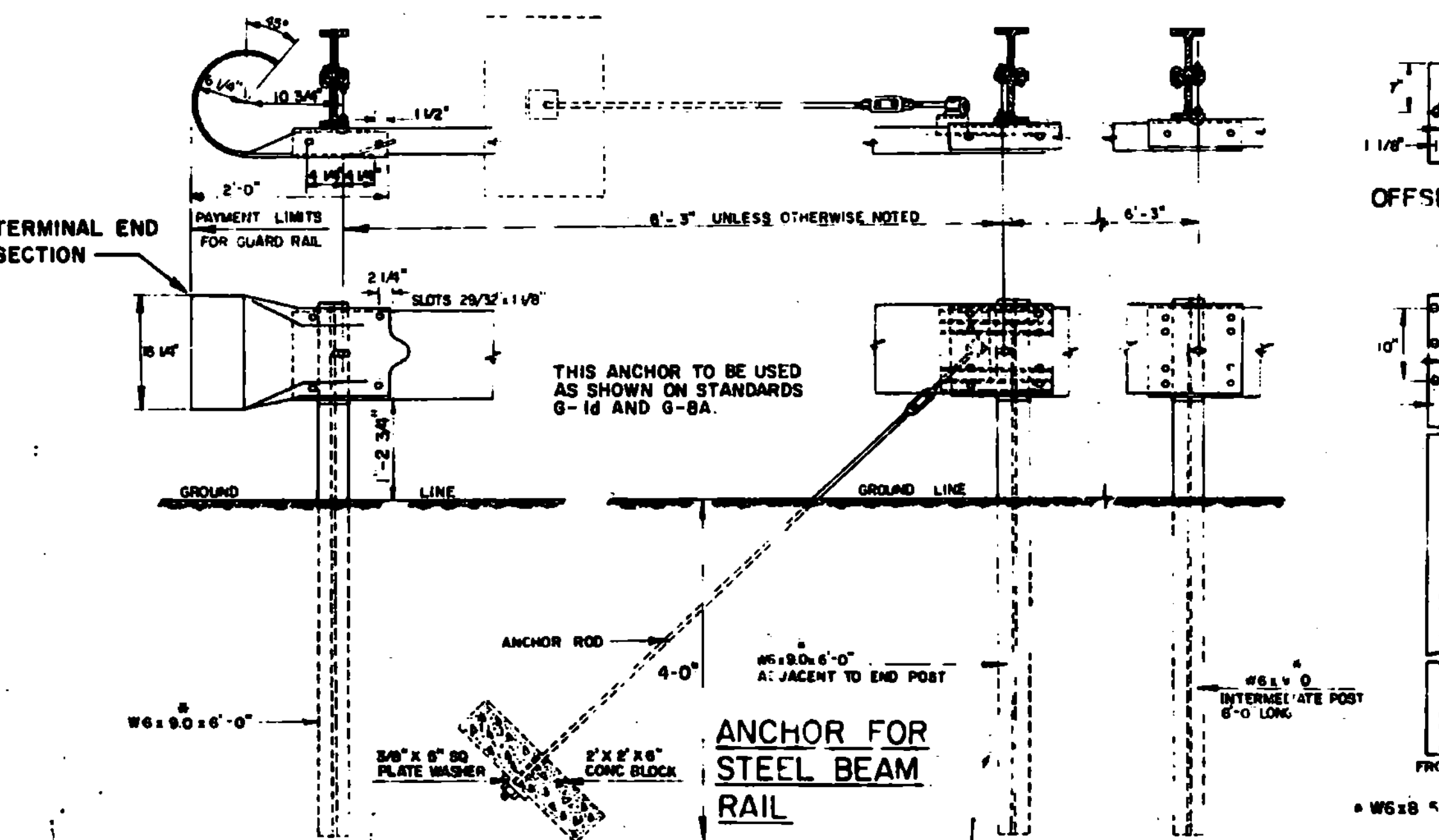
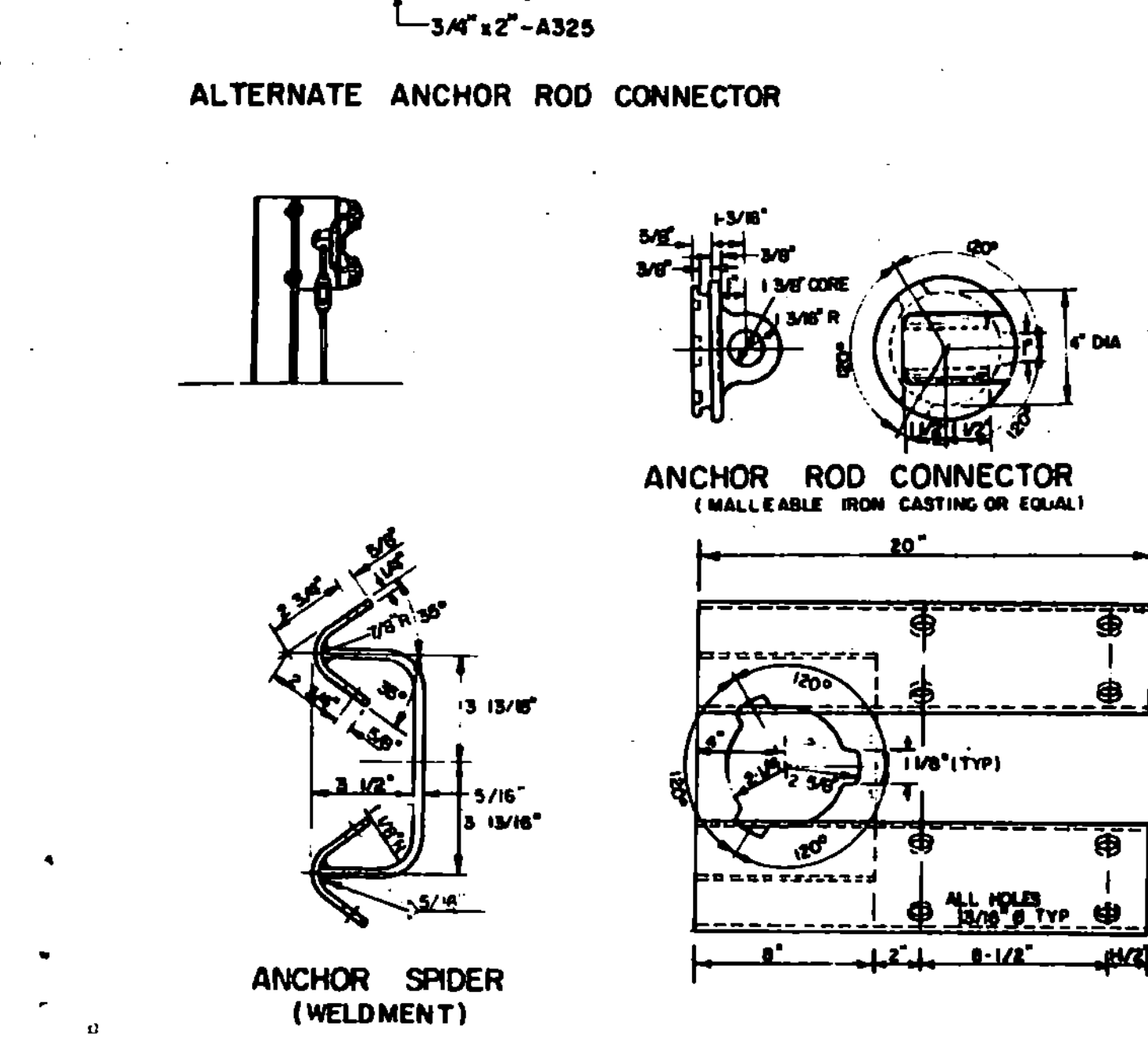
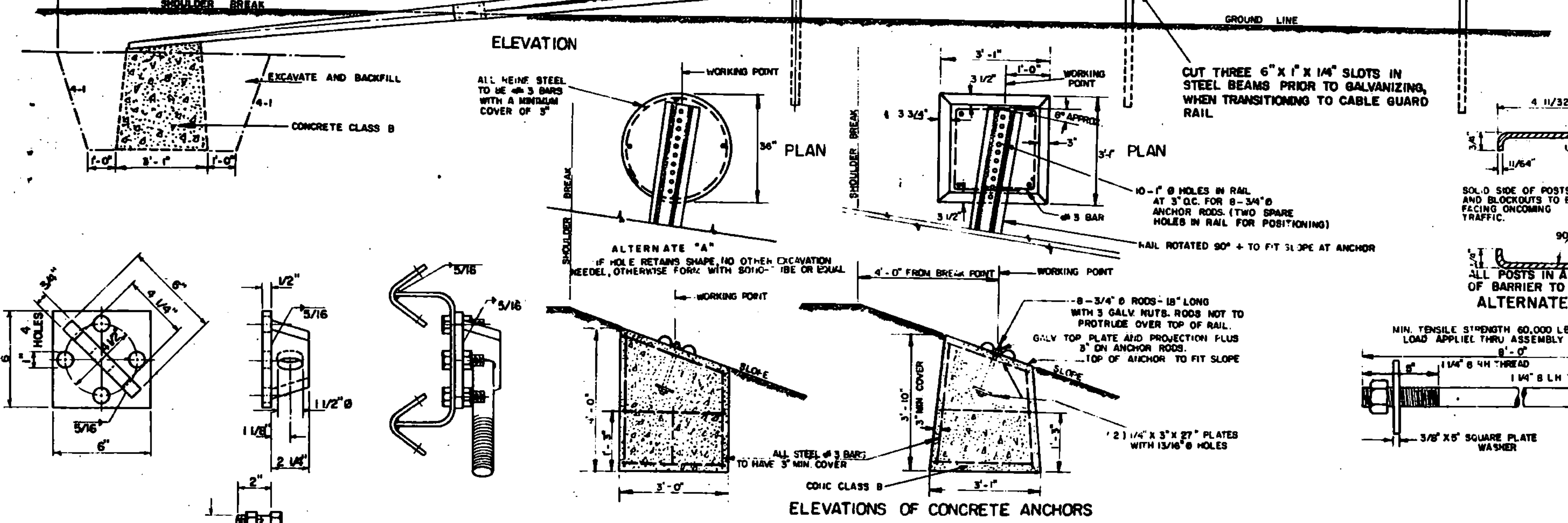
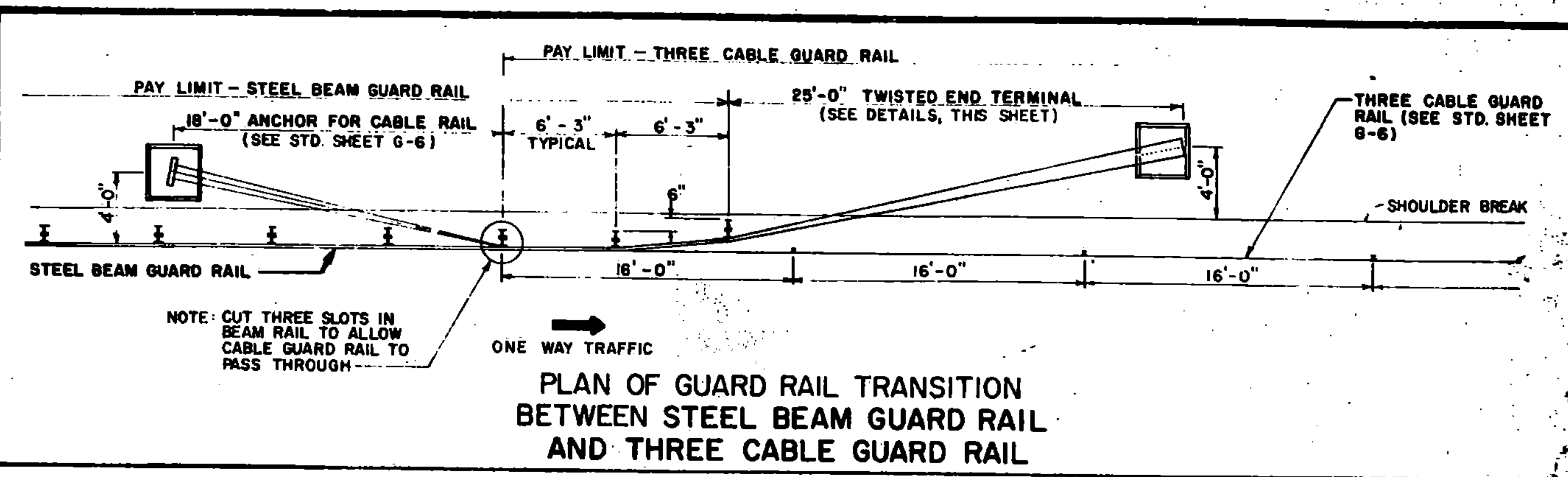


| BEAM MIN. GAGE | TENSILE STRENGTH (LBS) | RAIL ON JOINT | | BEAM STRENGTH | |
|----------------|------------------------|-----------------|-------------------|---------------|-----------------------------|
| | | TRAFFIC FACE UP | TRAFFIC FACE DOWN | LOAD (LBS) | MAXIMUM DEFLECTION (INCHES) |
| STANDARD | 12 | 80,000 | 1500 | 2" | 1200 |
| | | | 2000 | 3" | 1600 |
| HEAVY DUTY | 10 | 100,000 | 3000 | 2" | 1600 |
| | | | 2000 | 3" | 2400 |

STRENGTH - THE RAIL ELEMENT SHALL BE DESIGNED TO MEET THE REQUIREMENTS OF THE ABOVE TABLE. THE POST CONNECTION SHALL WITHSTAND A 5,000 POUND SIDE PULL IN EITHER DIRECTION. STANDARD STEEL BEAM TO BE 12 GAUGE AND THE HEAVY DUTY TO BE 10 GAUGE.



- REVISIONS AND CORRECTIONS
- APR. 10, 1972 POST HEIGHT INCREASED
 - JULY 9, 1973 NEW TRANSITION DETAIL ADDED
 - JUNE 4, 1974 TRANSITION REVISED, ALTERNATE ANCHOR ROD CONNECTOR AND ALTERNATE POST ADDED.
 - NOV. 29, 1977 ANCHOR DETAIL FOR STEEL BEAM GUARD RAIL WITH STEEL OR WOOD POSTS REMOVED.
 - APR. 17, 1978 REVISED ANCHOR DETAIL.
 - JUNE 1, 1978 CHANNEL ANCHOR DETAILS CHANGED.
 - APR 28, 1979 NOTE ON REFLECTIVE MATERIAL CHANGED
 - DEC. 18, 1980 INCREASED SHOULDER WIDENING FOR GUARD RAIL.
 - MAR 12, 1984 REVISED ANCHOR SPIDER DETAILS
 - JUNE 5, 1984 POST SIZE AND BACK UP PLATE NOTE CHANGED
 - DEC. 21, 1984 REMOVED POST WASHER
 - OCT. 31, 1985 REVISED TO CONFORM WITH 1986 SPECIFICATIONS

APPROVED:

R. W. Arnold
CHIEF ENGINEER

E. H. Stehney
ASST. CHIEF ENGINEER

G. M. Lane
HIGHWAY ENGINEER

STEEL BEAM GUARD RAIL
HEAVY DUTY STEEL BEAM GUARD RAIL
TWISTED END TERMINAL
ANCHOR FOR STEEL BEAM RAIL

G-1