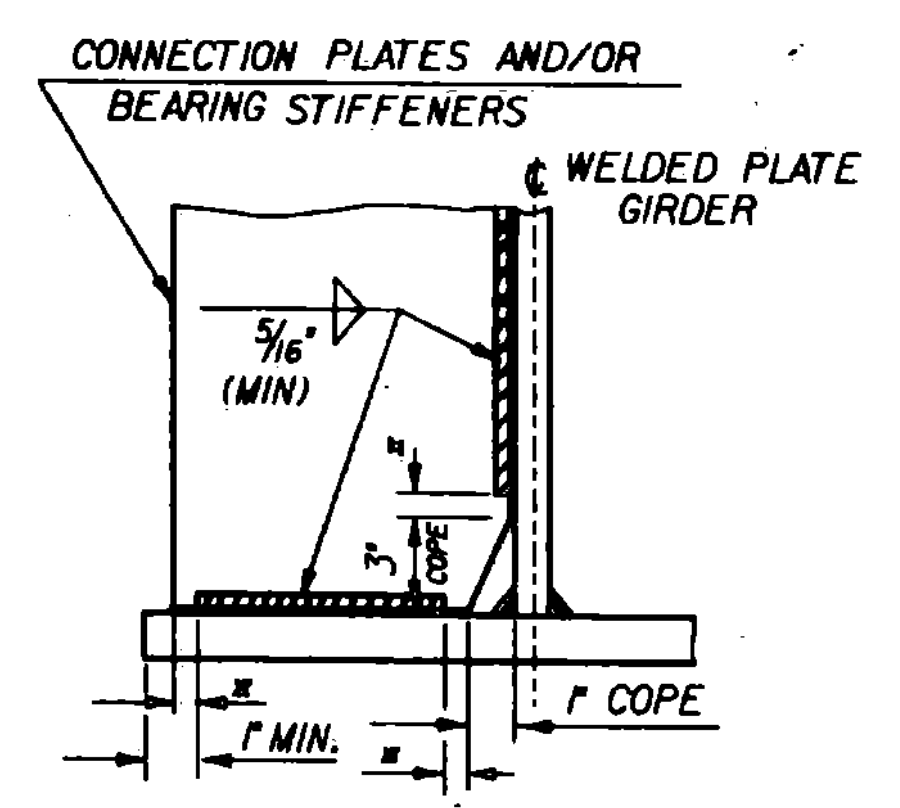


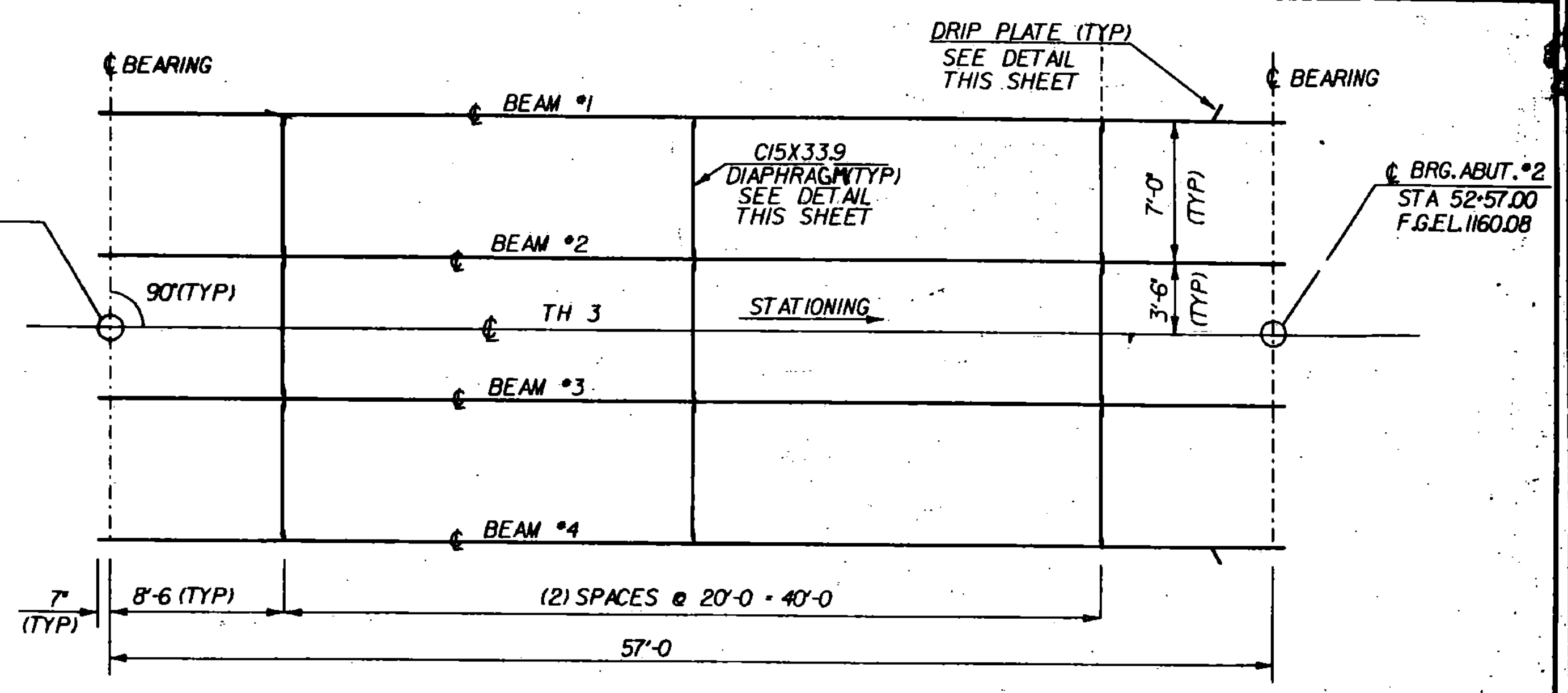
**INTERMEDIATE DIAPHRAGMS
FOR 27 INCH ROLLED BEAMS**

NOTE: HI-STRENGTH BOLTS, NUTS AND WASHERS SHALL CONFORM TO AASHTO DESIGNATION M 164

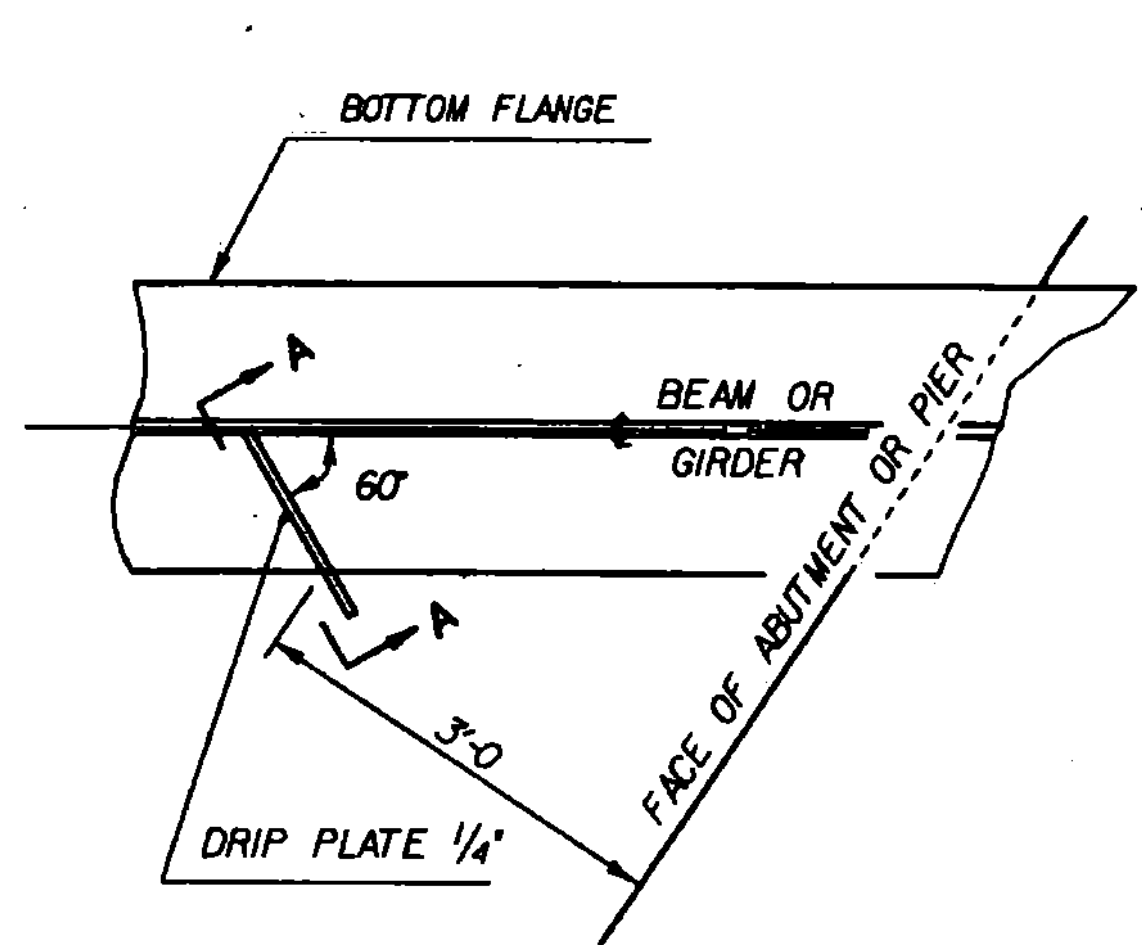


**WELD TERMINATION
AND COPING DETAILS FOR
WELDED PLATE GIRDERS AND ROLLED BEAMS**

* NO WELD FOR 1/4" MIN., 1/2" MAX.
(EXCEPT MUST MAINTAIN "r" MINIMUM FROM
EDGE OF FLANGE)

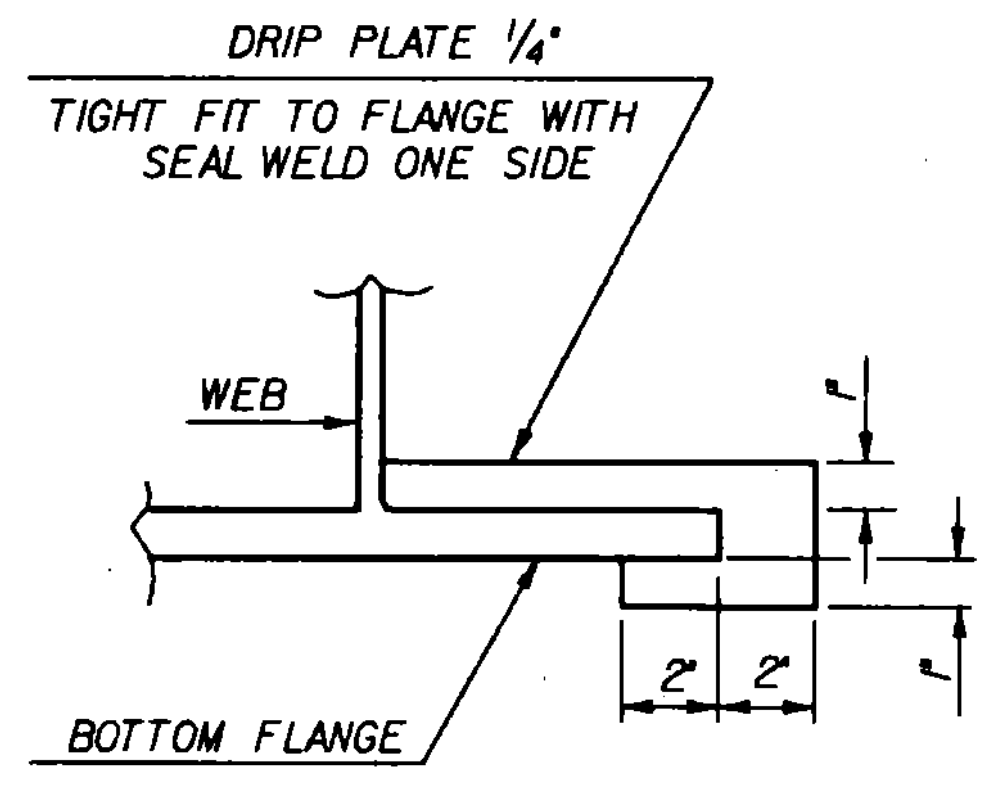


**FRAMING PLAN
SCALE 3/16" = 1'-0"**

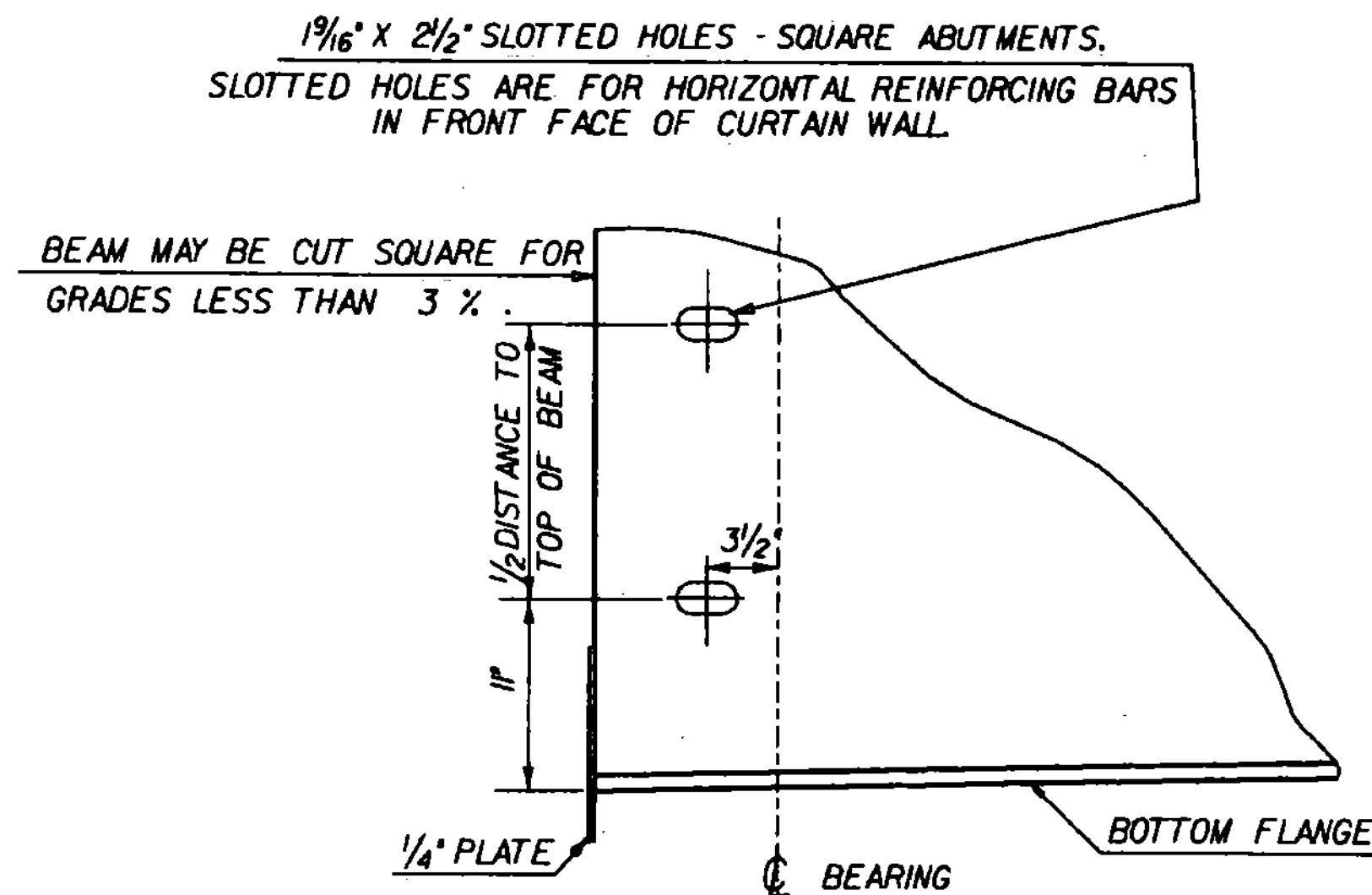


PLAN DRIP PLATE

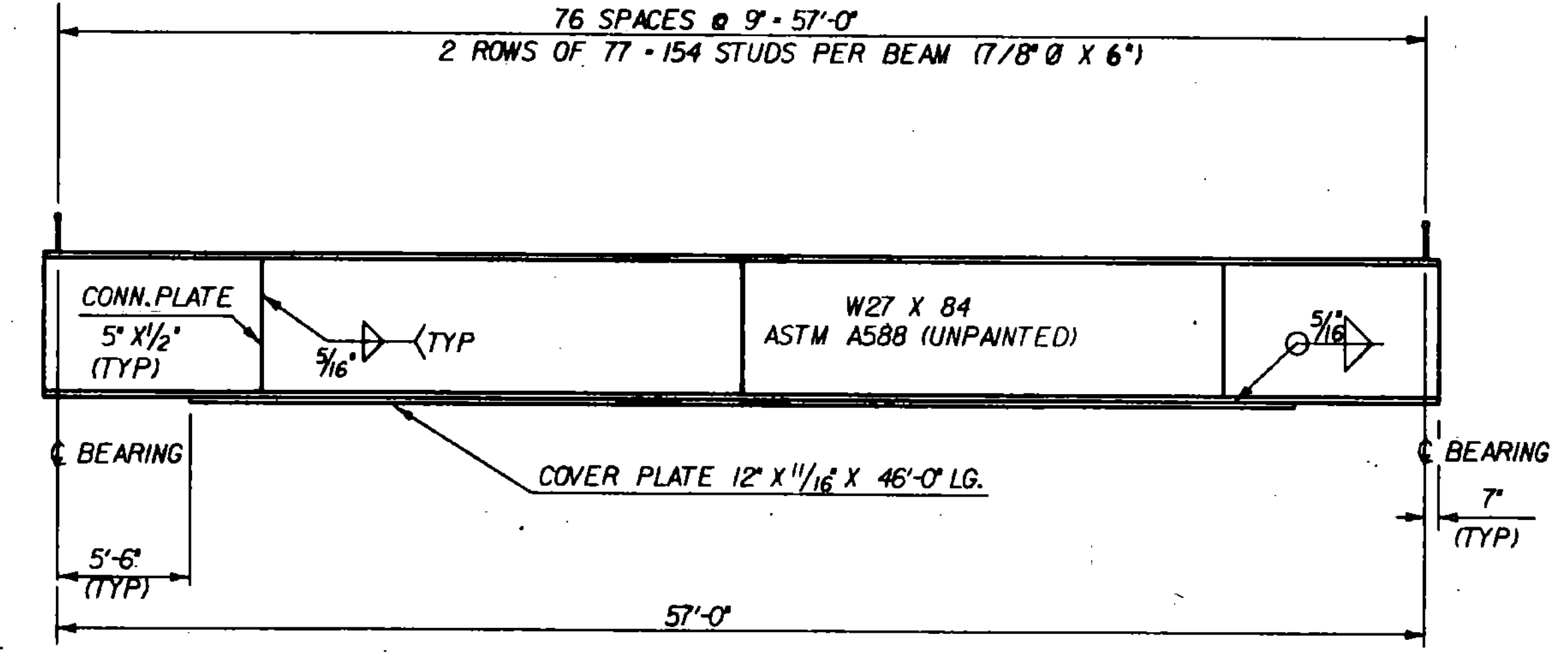
NOTE: DRIP PLATES SHALL BE PLACED ON OUTSIDE EDGE OF FASCIA GIRDERS ON THE HIGH SIDE OF ALL PIERS AND ABUTMENTS OR AS INDICATED ON PROJECT PLANS.



**SECTION A - A
NTS**

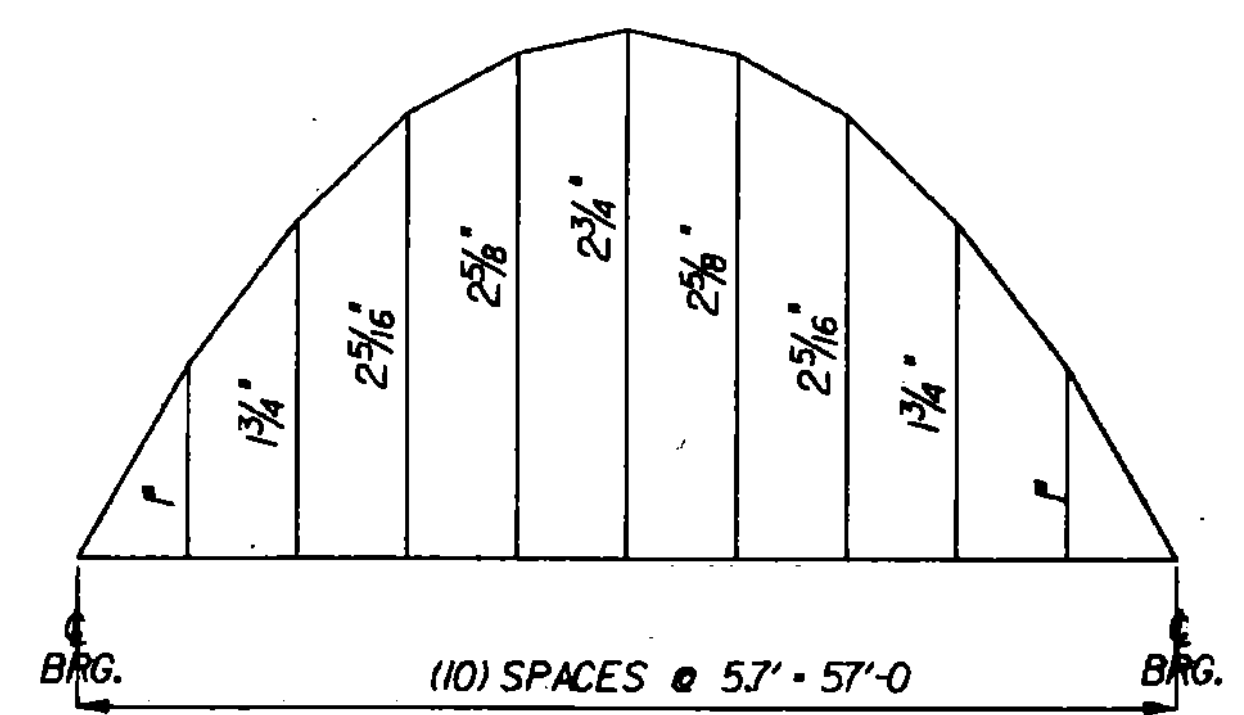


**ELEVATION VIEW END OF STEEL
BEAM AT ABUTMENT
NTS**

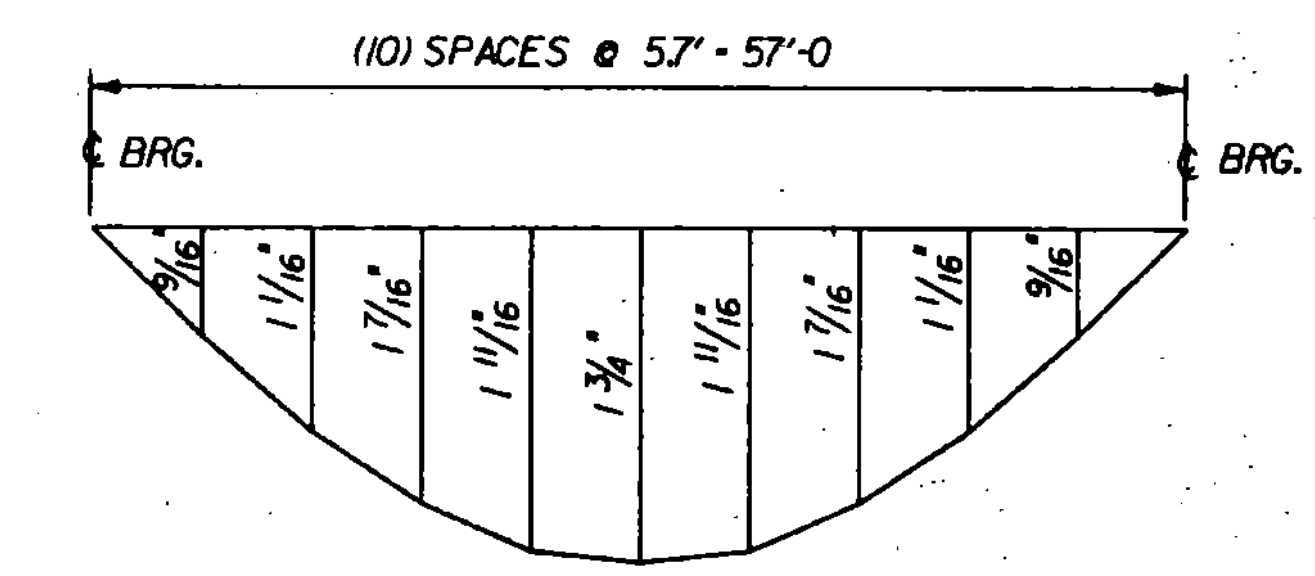


TYPICAL BEAM ELEVATION

HORZ. SCALE 3/16" = 1'-0"
VERT. SCALE 1/2" = 1'-0"



**CAMBER DIAGRAM
SCALE: 1'-10'-0" HOR.
1" = 1" VERT**



**DEAD LOAD DEFLECTION DIAGRAM
SCALE: 1'-10'-0" HOR.
1" = 1" VERT**

STATE OF VERMONT AGENCY OF TRANSPORTATION	
Town Of CHARLESTON	Bridge No. B24
Highway No. TH 3	Log Sta. 52+28
TH 3 OVER CLYDE RIVER	
FRAMING PLAN AND STEEL DETAILS	
Designed By ACHURCH	Drawn By SINCLAIR
Checked By C.WILLIAMS	Bridge Design Supervisor R. GENDRON
Date 12-88	Date 1-89
PROJECT CHARLESTON	PROJECT NO. BRZ 1449(14)
I.O.C. info. ZFA13056163C560FRM.DGN CHARLFRM/PRF	
Bridge Sheet No.	Sheet 10 of 33