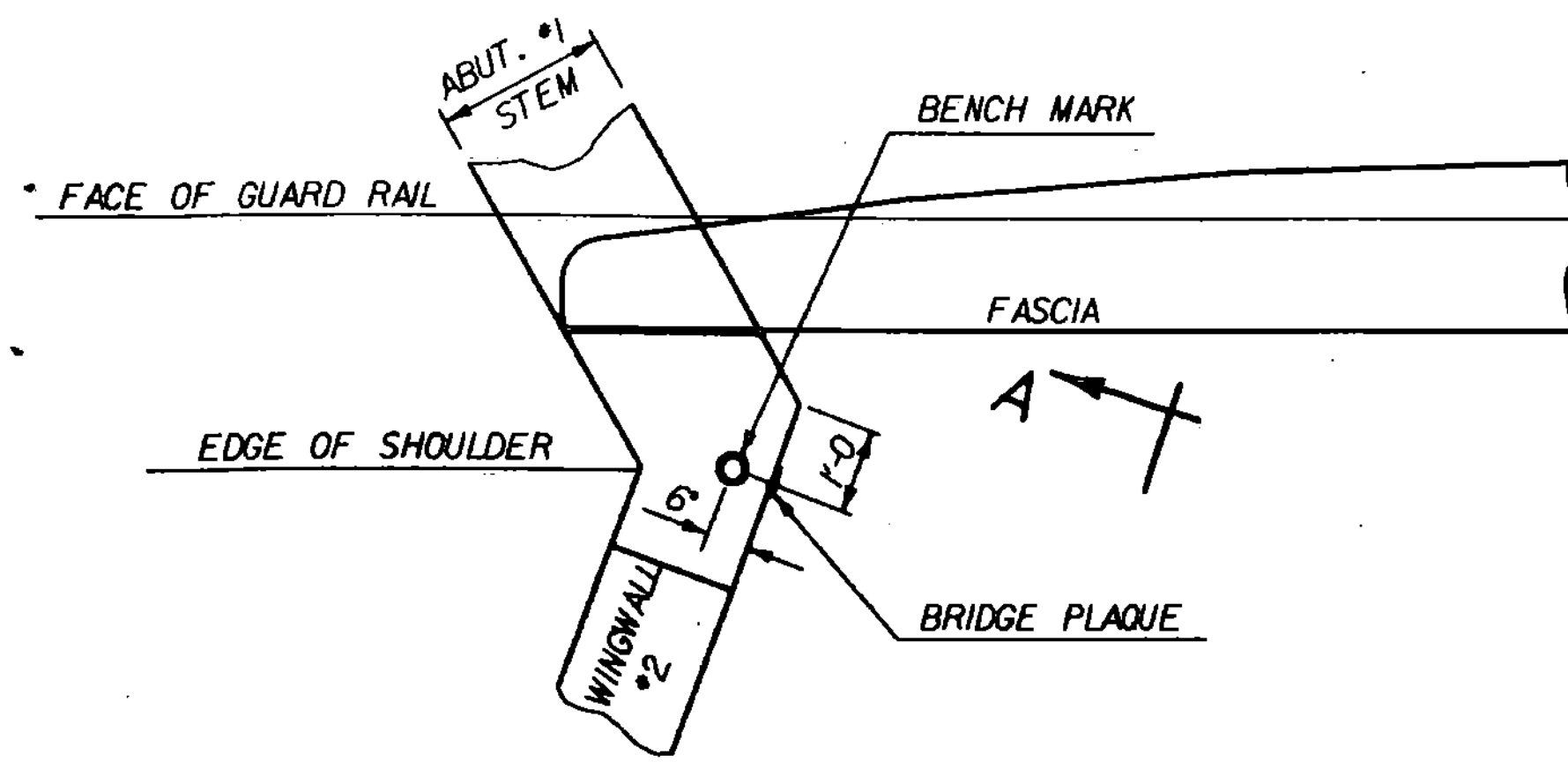
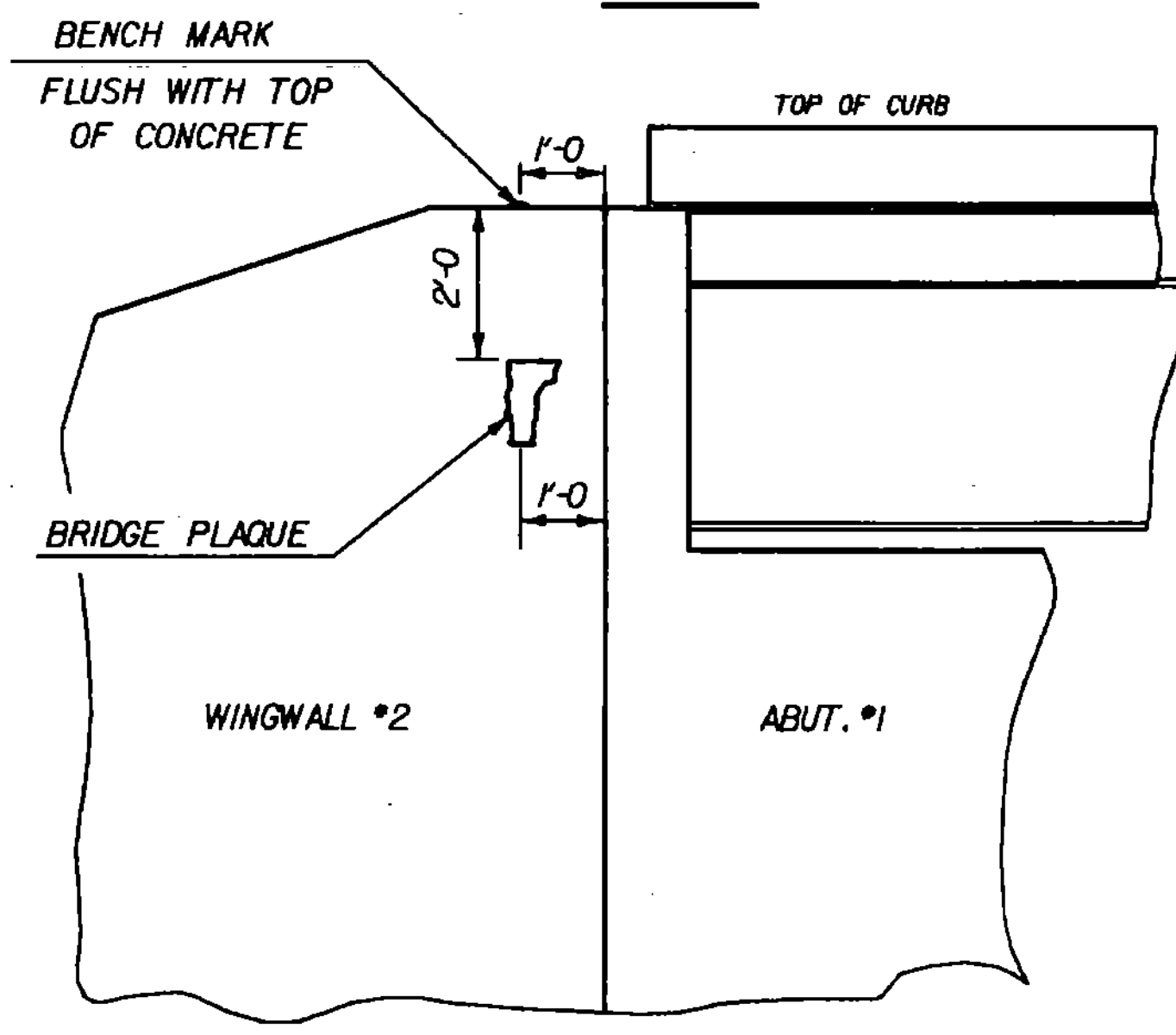


GENERAL NOTES



PLAN



VIEW "A - A"

BENCH MARK AND BRIDGE PLAQUE LOCATION

THE BRIDGE PLAQUE AND BENCH MARK WILL BE SUPPLIED BY THE AGENCY OF TRANSPORTATION AND SHALL BE INSTALLED BY THE CONTRACTOR AT ABUTMENT #1 ON THE RIGHT SIDE AS SHOWN OR AS DIRECTED BY THE ENGINEER.

1. ALL MATERIALS AND CONSTRUCTION SHALL CONFORM TO STATE OF VERMONT, AGENCY OF TRANSPORTATION, 1986 STANDARD SPECIFICATIONS FOR CONSTRUCTION, AND ITS LATEST REVISIONS, AND THE 1983 AASHTO STANDARD SPECIFICATIONS FOR HIGHWAY BRIDGES, AND ITS LATEST REVISIONS.
2. DESIGN IS FOR HS-20 LIVE LOADING WITH ALLOWANCE FOR FUTURE PAVING.
3. ALL STRUCTURAL STEEL SHALL BE DETAILED AND FABRICATED USING PROCEDURES AND TOLERANCES IN ACCORDANCE WITH APPLICABLE PUBLICATIONS OF THE AMERICAN INSTITUTE OF STEEL CONSTRUCTION (AISC).
4. BEAMS SHALL BE CAMBERED FOR THE DEAD LOAD DEFLECTION PLUS THE PERMANENT CAMBER. THE CAMBER SHALL APPROXIMATE A SIMPLE CIRCULAR CURVE FROM SUPPORT TO SUPPORT.
5. FOR ALL FIELD CONNECTION DETAILS, SEE THE SPECIAL PROVISIONS.
6. FOR ALL WELDING DETAILS, SEE THE SPECIAL PROVISIONS.
7. AFTER SUPERSTRUCTURE STEEL HAS BEEN ERECTED, ELEVATIONS ALONG THE TOP OF BEAMS SHALL BE TAKEN AS DIRECTED BY THE ENGINEER FOR USE IN DETERMINING FINAL GRADE.
8. FLEMING BRACKETS OR SIMILAR FALSEWORK SHALL BE SPACED AT A MAXIMUM OF FOUR FEET.
9. ANY HOLES IN FASCIA BEAMS OR FASCIA GIRDER WEBS NOT OTHERWISE FILLED SHALL BE FILLED WITH BUTTON HEAD OR HEX HEAD BOLTS.
10. ALL REINFORCING STEEL SHALL BE DETAILED AND FABRICATED USING PROCEDURES AND TOLERANCES IN ACCORDANCE WITH APPLICABLE PUBLICATIONS OF THE 'CONCRETE REINFORCING STEEL INSTITUTE'.
11. ALL DECK REINFORCING SHALL BE EPOXY COATED.
12. THE REINFORCING STEEL SCHEDULE SHALL BE COMPLETED BY THE REINFORCING STEEL FABRICATOR. QUANTITIES SHOWN ARE ESTIMATED FOR BID PURPOSES. THE CONTRACTOR SHALL BE PAID FOR REINFORCING STEEL BASED ON THE ACTUAL SUPPLIERS INVOICES FOR REINFORCING STEEL USED ON THE PROJECT.
13. MINIMUM COVER FOR REINFORCING STEEL (EXCEPT IN DECKS) SHALL BE TWO (2) INCHES ALONG BACK FACES OF WALLS AGAINST EARTH, AND THREE (3) INCHES ELSEWHERE.
14. REINFORCING PLACEMENT TOLERANCES SHALL BE:
SPACING +- 1"
CLEARANCE +- 1/4"
15. DECK CONCRETE SHALL BE 'CONCRETE, CLASS A'. ALL OTHER CONCRETE SHALL BE 'CONCRETE, CLASS B'.
16. ALL EXPOSED EDGES OF CONCRETE SHALL BE CHAMFERED 1" BY 1".
17. PROVISIONS FOR FISH GRAVEL ARE TO BE MADE AS FOLLOWS: 15 CY OF 3/4" STONE IS TO BE GRADATED IN ACCORDANCE WITH SPECIFICATION 704.02B AND 60 CY OF 1 1/2" STONE IS TO BE GRADATED IN ACCORDANCE WITH SPECIFICATION 704.02C. ALL STONE MATERIAL MUST BE IN ACCORDANCE WITH SPECIFICATION 704.02. PAYMENT SHALL BE INCLUDED UNDER ITEM 613.13 - 'STONE FILL, TYPE IV.'
18. DOWNSTREAM OF BRIDGE THERE SHALL BE ABSOLUTELY NO REMOVAL OF VEGETATION OUTSIDE THE 10' STRIP BEYOND THE LIMITS OF CONSTRUCTION.

19. SURFACES OF BRIDGE SEATS UNDER BEARING DEVICES SHALL BE LEVEL. OTHER BRIDGE SEAT AREAS SHALL BE SLOPED 1/2" PER FOOT. ABUTMENT SEATS SHALL BE SLOPED FULL WIDTH TOWARD THE CENTER SPAN. THE ENTIRE BRIDGE SEAT SURFACE IS TO BE SMOOTH STEEL TROWEL FINISHED.
20. FOR BRIDGE DECK POURS, THE MAXIMUM TIME LIMIT FOR ANY COMBINATION OF POURS DONE IN ONE DAY SHALL BE EIGHT HOURS. THERE SHALL BE A MINIMUM DELAY OF NINETY SIX HOURS BETWEEN THE COMPLETION OF ONE DAY'S POUR AND THE BEGINNING OF ANY OTHER POUR.
21. WATER REPELLENT SHALL BE APPLIED TO ALL EXPOSED CONCRETE SURFACES EXCEPT THE UNDERSIDE OF DECK BETWEEN DRIP BEADS.
22. NOT USED
23. THE FOLLOWING TABLE OF ALLOWABLE STRESSES AND WEIGHTS APPLY TO THESE PLANS FOR DESIGN PURPOSES:

	A-588	A-36
STRUCTURAL STEEL: $f_{working stress}$	= 27,000 PSI	20,000 PSI
	$f_{working stress}$	= 17,000 PSI
	Grade 60	
REINFORCING STEEL: f_t	= 24,000 PSI	
	f_c	= 20,000 PSI
SOIL: UNIT WEIGHT	140 PCF	
24. ALL DIMENSIONS ARE HORIZONTAL OR VERTICAL, AND ARE GIVEN AT 68 DEGREES F.
25. TRAFFIC SHALL NOT BE ALLOWED ON THE NEW BRIDGE UNTIL AT LEAST 14 DAYS AFTER PLACEMENT OF THE CONCRETE CURBS, AND DESIGN STRENGTH OF CONCRETE HAS BEEN ATTAINED AS EVIDENCED BY TEST CYLINDER BREAKS.
26. JOINTS AND SCORE MARKS IN CONCRETE SHALL BE CONSTRUCTED AS INDICATED ON THE PLANS OR AS DIRECTED BY THE ENGINEER.
27. THE KEY IN CONCRETE CONSTRUCTION JOINTS SHALL BE MONOLITHIC AND CONTINUOUS FOR THE FULL LENGTH OF THE JOINT.
28. THE EXISTING BRIDGE SHALL BE CLOSED TO TRAFFIC.
29. ITEM 529.15 'REMOVAL OF STRUCTURE' SHALL INCLUDE REMOVAL OF ALL THE EXISTING SUPERSTRUCTURE AND THE EXISTING ABUTMENTS TO THE CUT LINES AS INDICATED ON THE SECTIONS.
30. THE BAILEY BRIDGES PRESENTLY BEING USED AT THIS SITE ARE TO REMAIN THE PROPERTY OF THE TOWN OF CHARLESTON. THE CONTRACTOR IS TO CAREFULLY DISMANTLE AND STOCKPILE THE BAILEY BRIDGES, LEAVING THE PIECES TO BE REMOVED BY THE TOWN. LABOR IS TO BE INCLUDED UNDER ITEM 529.15 'REMOVAL OF STRUCTURE.'
31. THE CONTRACTOR SHALL ERECT AND MAINTAIN ALL ON-PROJECT SIGNS AND BARRICADES AS DIRECTED BY THE ENGINEER. COST FOR THESE SIGNS AND BARRICADES SHALL BE CONSIDERED SUBSIDIARY TO ALL OTHER CONTRACT ITEMS.
32. THE TOWN SHALL ERECT AND MAINTAIN ALL OFF-PROJECT SIGNS AND SHALL MAINTAIN A DETOUR.
33. THE WORK AREA SHALL BE DESIGNATED WITH SNOW FENCE AS INDICATED IN THE CORPS OF ENGINEERS PERMIT IN THE SPECIAL PROVISIONS OR AS MODIFIED AT THE PRECONSTRUCTION CONFERENCE, TO BE PAID FOR UNDER THE UNIT PRICE BID FOR ITEM 620.70 SNOW FENCE (MODIFIED).

33. ANY IN STREAM CONSTRUCTION IS TO BE ACCOMPLISHED DURING THE PERIOD FROM JUNE 1ST TO OCTOBER 1ST. ANY DEVIATION FROM THIS PERIOD MUST BE APPROVED BY THE AGENCY OF NATURAL RESOURCES.
34. ANY 'GRANULAR BACKFILL FOR STRUCTURES' USED UNDER FOOTINGS SHALL BE COMPACTED TO 95% DRY DENSITY AS PER AASHTO T-99.
35. 'GRANULAR BACKFILL FOR STRUCTURES' HAS BEEN ALLOWED FOR A DEPTH OF 6' BELOW ALL CULVERTS. INSTALLATION IS TO BE CONDUCTED AS DIRECTED BY THE ENGINEER.
36. TEMPORARY STEEL SHEET PILING IS TO BE USED ON THREE SIDES OF THE NORTHEASTERLY WINGWALL AT ABUT.1 TO PREVENT UNNECESSARY ENCROACHMENT ON THE STREAM BOTTOM. PAYMENT FOR TEMPORARY STEEL SHEET PILING IS TO BE INCLUDED UNDER THE UNIT PRICE BID FOR ITEM 204.25 'STRUCTURE EXCAVATION.' EARTH COFFERDAMS IN THE STREAM ARE NOT TO BE USED ON THIS PROJECT.
37. THE BYPASSED SECTION OF EXISTING CHANNEL DOWNSTREAM OF BR24 IS TO BE RETAINED AS WETLAND.
38. THE NEW RELOCATED CHANNEL MUST BE COMPLETED WITH STONE FILL AND FISH HABITAT ESTABLISHED PRIOR TO DIVERTING THE STREAM INTO THE NEW CHANNEL.
39. THE DIKE TYPICAL SECTIONS AND ALL OTHER STONE FILL TREATED STREAMBANK SECTIONS ON THE PROJECT MUST PROVIDE FOR REVEGETATION BY CALLING FOR PLACEMENT OF A TWELVE (12) INCH DEEP LAYER OF NATIVE TURF CONTAINING ROOTS OF NATIVE STREAMBANK VEGETATION. THIS MATERIAL MUST COVER THE ROCK FROM NORMAL WATER LEVEL UP TO THE LIMIT OF STONE FILL, 10 FEET ON TOP OF THE BANK AND AS SHOWN ON SECTIONS.
40. THE RELOCATED CHANNEL DOWNSTREAM OF THE NEW BRIDGE IS TO HAVE A FORTY FOOT MAXIMUM BOTTOM WIDTH NORMAL TO FLOW. THE UPSTREAM CHANNEL IS TO BE THIRTY FEET MAXIMUM ACROSS THE EXISTING ISLAND.
41. THE CONTRACTOR SHALL STOCKPILE ALL SHRUBBERY SUCH AS BUSHES AND SMALL TREES AND VEGETATION REMOVED FOR CONSTRUCTION OF THE PROJECT. THE CONTRACTOR SHALL PLACE THIS STOCKPILED MATERIAL ON THE STONE FILL AND NEWLY CONSTRUCTED BERM AS DIRECTED BY THE ENGINEER AND THE AGENCY OF NATURAL RESOURCES. IF THE QUANTITY OF STOCKPILED MATERIAL AT THE SITE IS INSUFFICIENT FOR REVEGETATION REQUIREMENTS, THE CONTRACTOR SHALL OBTAIN SUPPLEMENTARY OFF-SITE MATERIAL. PAYMENT SHALL BE INCLUDED UNDER ITEM 651.40, 'GRUBBING MATERIAL.'
42. ALL CUT AND FILL SLOPES AND ANY OTHER DISTURBED AREAS SHALL BE TREATED IN ACCORDANCE WITH THE SPECIFICATION, SECTION 651 'TURF ESTABLISHMENT', AND AS DIRECTED BY THE ENGINEER. ALL MATERIALS USED FOR TURF ESTABLISHMENT MUST BE APPROVED BY THE ENGINEER.

STATE OF VERMONT AGENCY OF TRANSPORTATION

Town Of	CHARLESTON	Bridge No.	BR24
Highway No.	TH3	Log. Sta.	52-28
TH 3 OVER CLYDE RIVER			
GENERAL NOTES AND BRIDGE MARKER			
Designed By	ACHURCH	Drawn By	SINCLAIR
Checked By	C.WILLIAMS	Bridge Design Supervisor	R.GENDRON
Date	12-88	Date	1-89
PROJECT	CHARLESTON	PROJECT NO.	BRZ 1449(14)
I.O.C. Info.	ZFAH30,56163C560SUP.DGN	CHARLSUP	
Bridge Sheet No.		Sheet	8 of 33

PLOTTED 22-MAR-89
REV. 6-13-90.