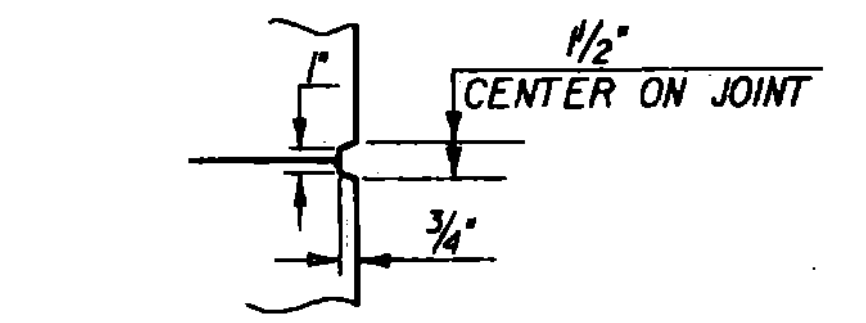
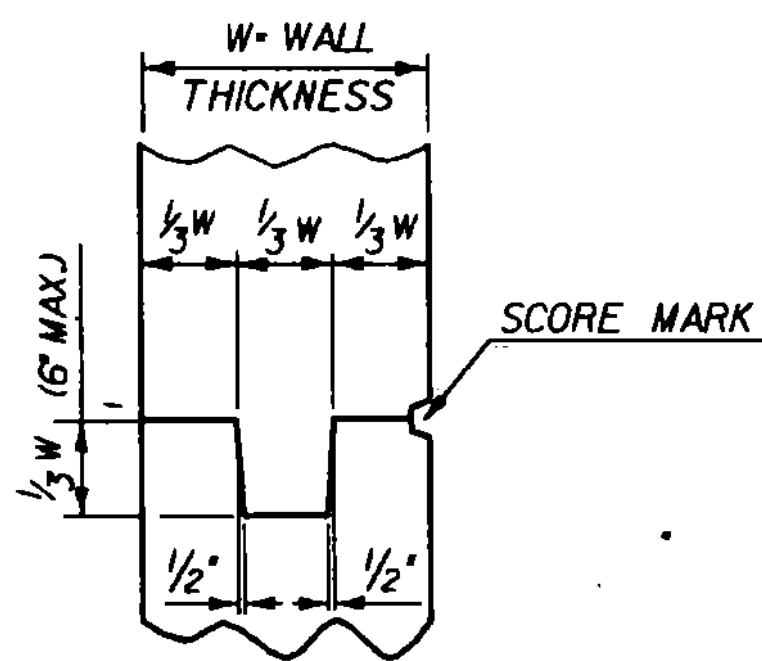


**RAILING PLAN**  
TYPICAL ALL CORNERS  
SCALE 1/4" = 1'-0"

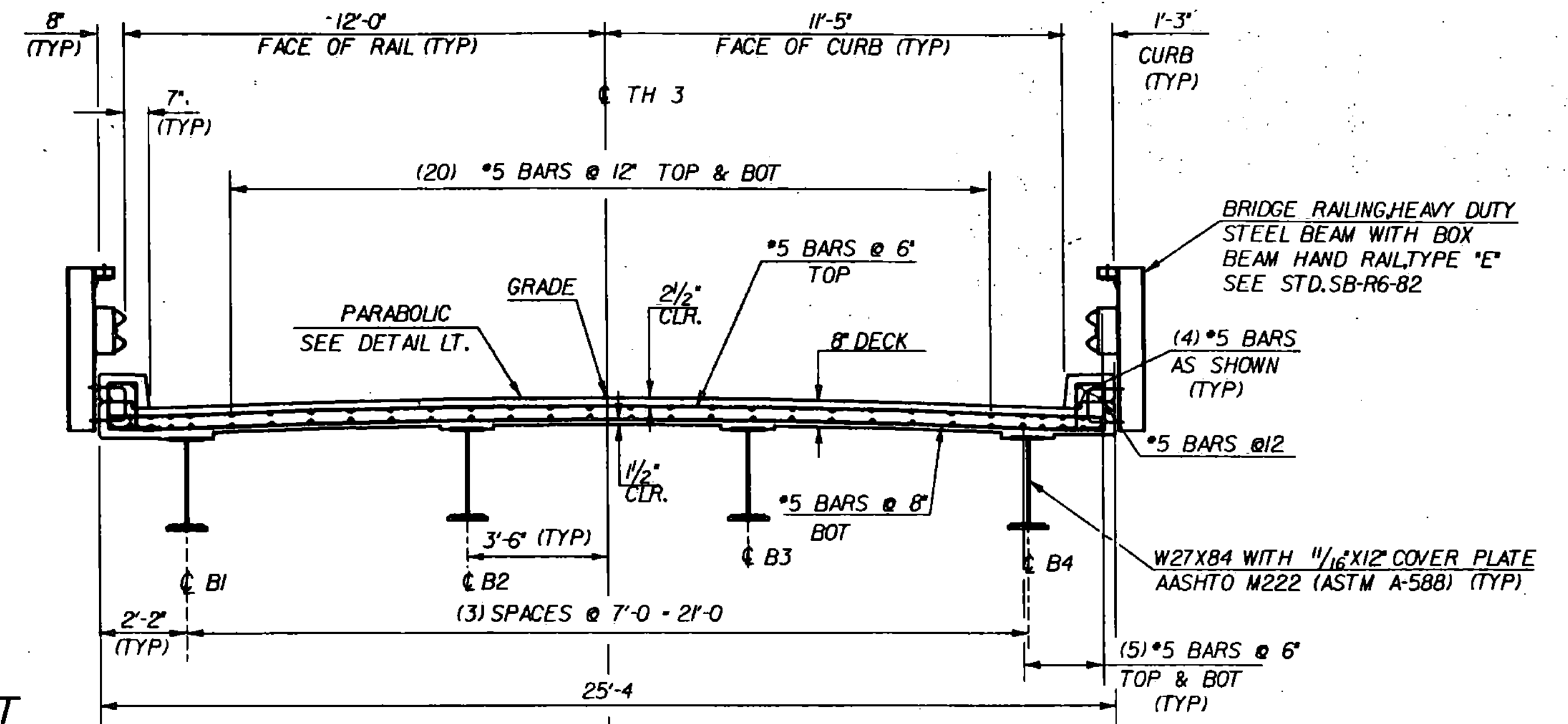
NOTE: OMIT TRANSITION POST AS SHOWN ON STD. SB-R6-82 AND RUN HAND RAIL TO FIRST POST OFF BRIDGE.



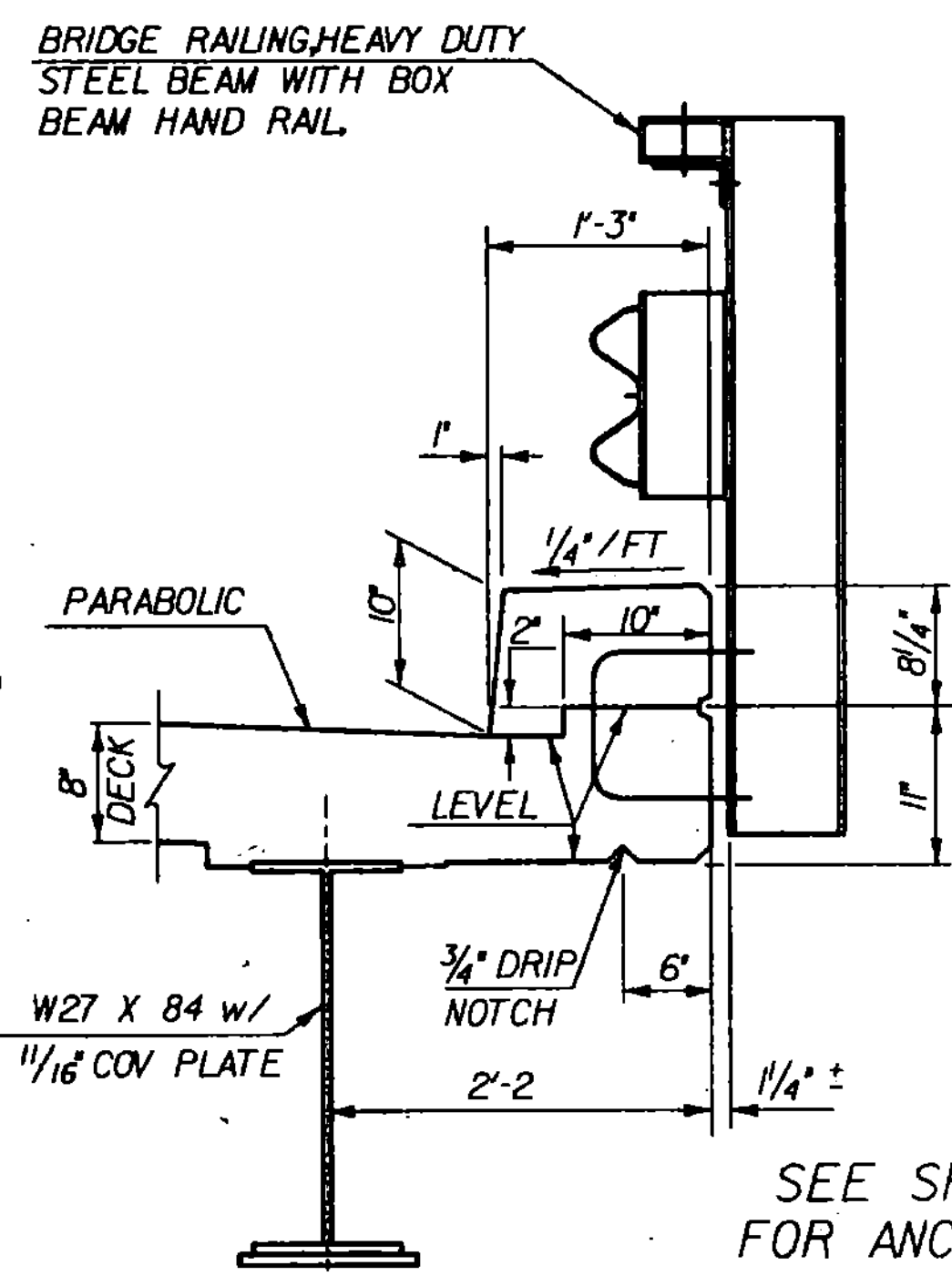
**SCORE MARK DETAIL**



**TYPICAL CONCRETE CONSTRUCTION JOINT**

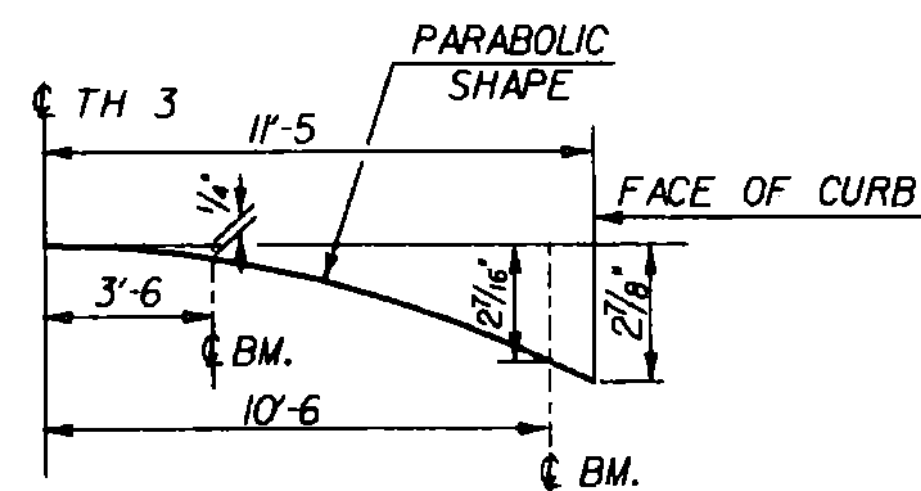


**TYPICAL BRIDGE SECTION**  
SCALE 3/8" = 1'-0"

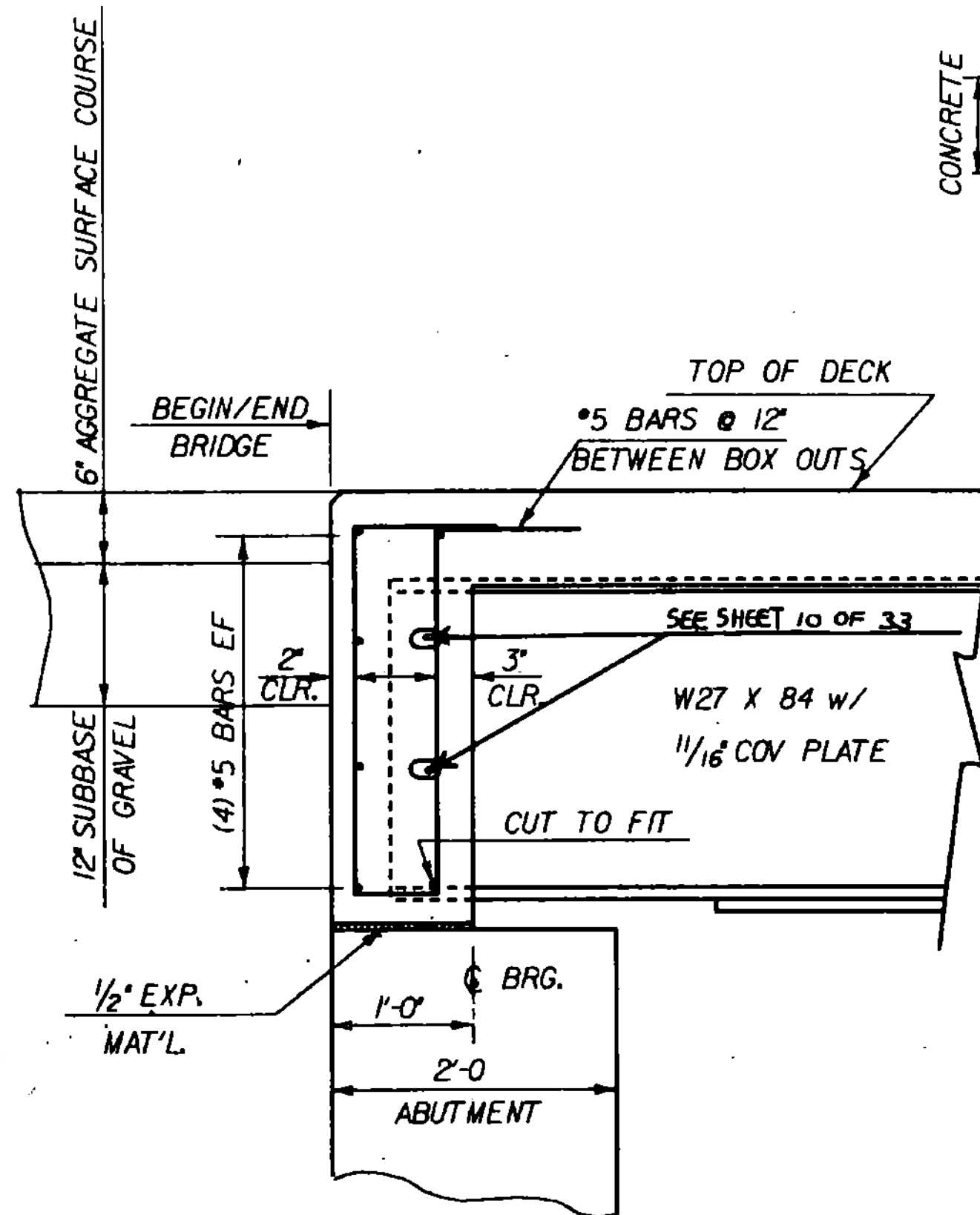


**CURB DETAIL**  
SCALE 1" = 1'-0"

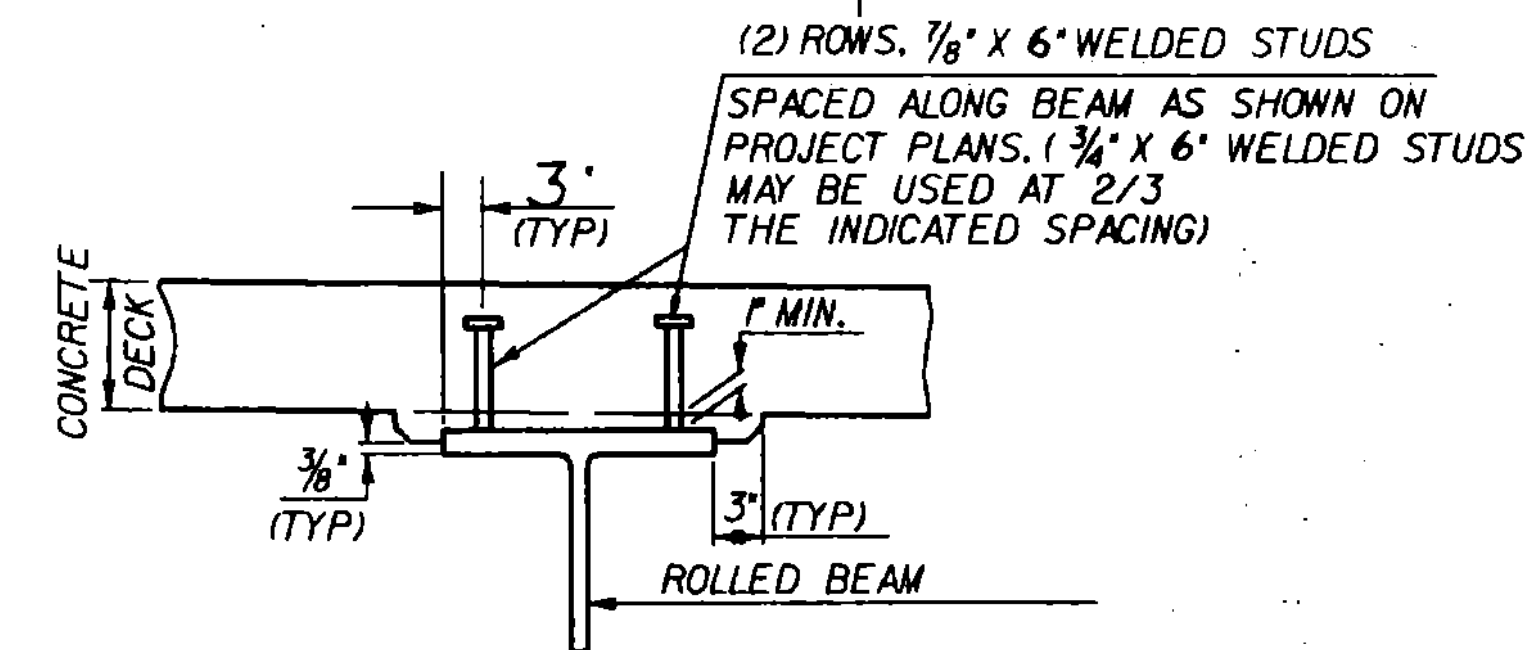
SEE SHEET 9 OF 33 FOR ANCHORAGE DETAILS



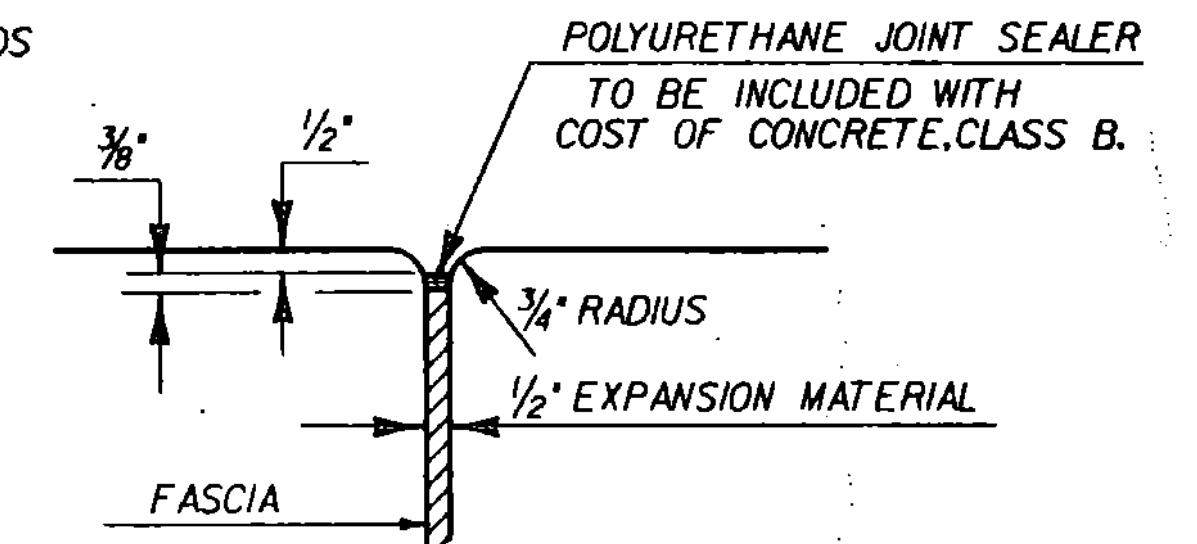
**PARABOLIC DETAIL**  
RIGHT SIDE SHOWN  
LEFT SIDE SAME  
SCALE 1/4" = 1'-0" HOR.  
3" = 1'-0" VERT



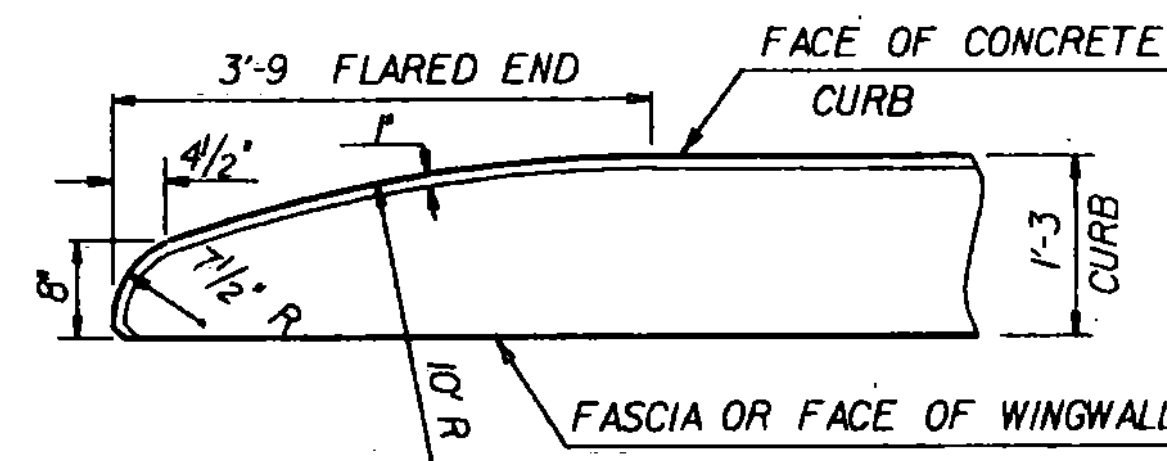
**END OF BRIDGE**  
SCALE 1" = 1'-0"



**BEAM HAUNCH AND SHEAR CONNECTOR DETAILS**



**JOINT BETWEEN FASCIA AND ABUTMENT**  
SCALE: 3" = 1'



**FLARED END DETAIL FOR 1'-3" CURB**  
CURB REINFORCING STIRRUP BARS SHALL BE TURNED OR CUT AS REQUIRED TO FIT FLARED ENDS.

**STATE OF VERMONT AGENCY OF TRANSPORTATION**

Town Of	CHARLESTON	Bridge No.	B24
Highway No.	TH3	Log Sta.	
		Surv. Sta.	52+28
TH3 OVER CLYDE RIVER			
TYPICAL SECTION AND SUPERSTRUCTURE DETAILS			
Designed By	ACHURCH	Drawn By	SINCLAIR
Checked By	Date	Bridge Design Supervisor	
	C.WILLIAMS	12-88	R.GENDRON Date 1-89
PROJECT	CHARLESTON	PROJECT NO.	BRZ 1449(14)
I.&C. Info.	ZF A/E 30.56763C560SUP.DGN		CHARLSUP2
Bridge Sheet No.		Sheet	7 of 33