

**REV CURVE DATA**  
 $\Delta = 14^{\circ}00'00''$  RT  
 $D = 20^{\circ}00'00''$   
 $R = 286.48$   
 $T = 35.18$   
 $L = 70$  FT  
 $E = 2.15$   
 $2T-L = 0.36$

BM #1  
 ELEV 1160.58  
 CH. SQ @ NE  
 CORNER OF ABUT

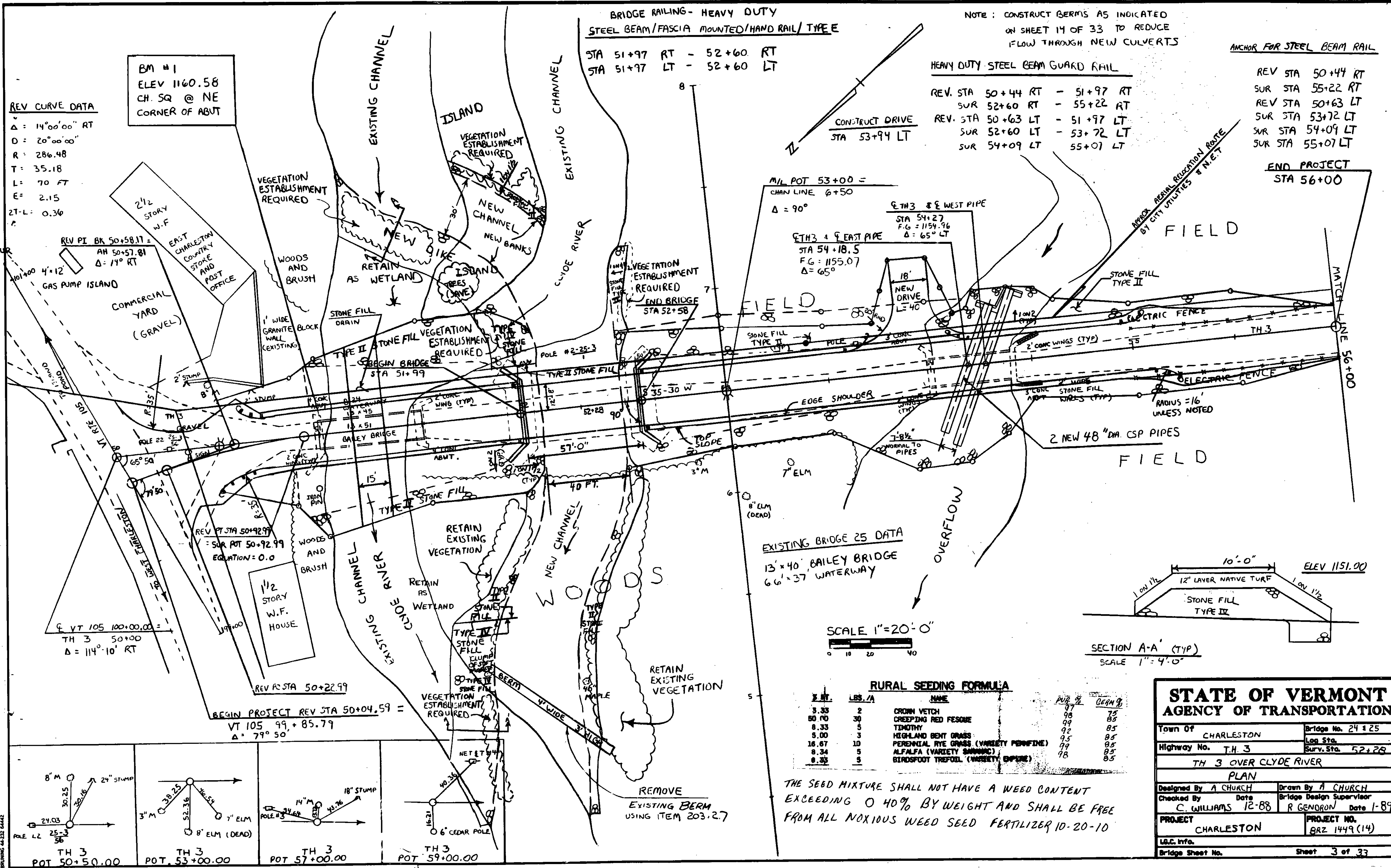
**BRIDGE RAILING - HEAVY DUTY**  
 STEEL BEAM/FASCIA MOUNTED/HAND RAIL/TYPE E  
 STA 51+97 RT - 52+60 RT  
 STA 51+97 LT - 52+60 LT

NOTE: CONSTRUCT BERMS AS INDICATED  
 ON SHEET 14 OF 33 TO REDUCE  
 FLOW THROUGH NEW CULVERTS

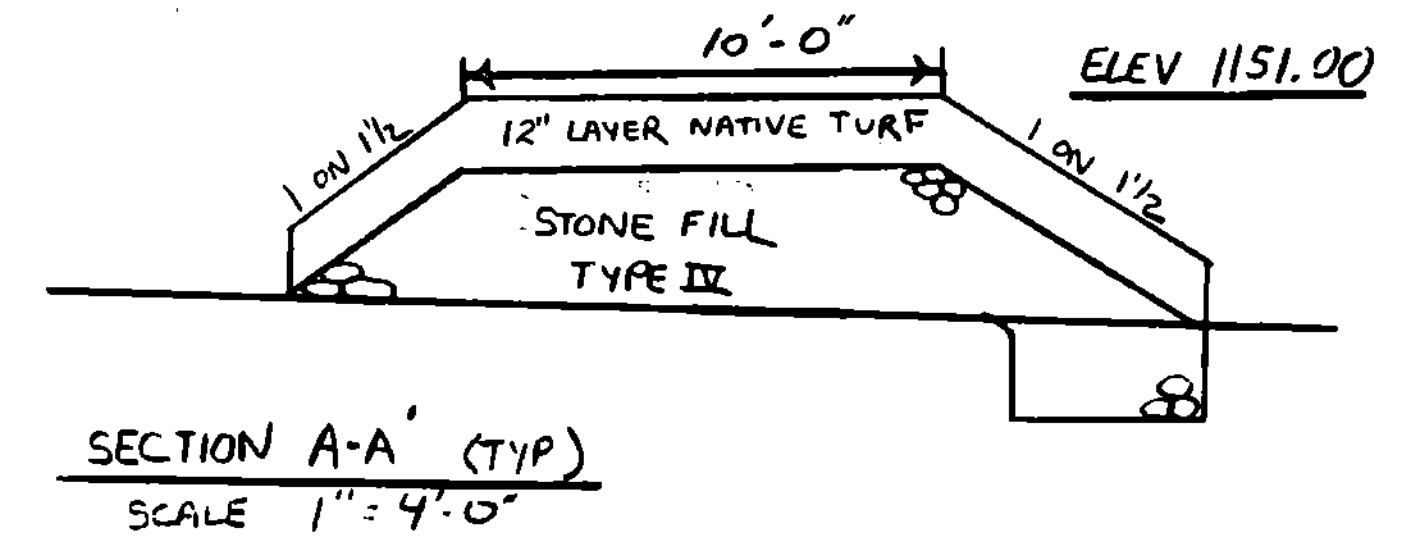
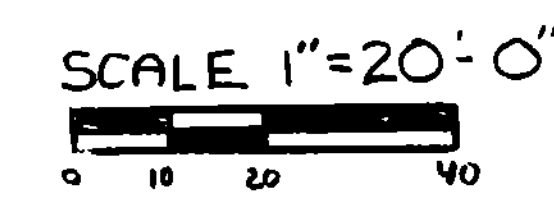
**HEAVY DUTY STEEL BEAM GUARD RAIL**  
 REV. STA 50+44 RT - 51+97 RT  
 SUR 52+60 RT - 55+22 RT  
 REV. STA 50+63 LT - 51+97 LT  
 SUR 52+60 LT - 53+72 LT  
 SUR 54+09 LT - 55+07 LT

**ANCHOR FOR STEEL BEAM RAIL**  
 REV STA 50+44 RT  
 SUR STA 55+22 RT  
 REV STA 50+63 LT  
 SUR STA 53+72 LT  
 SUR STA 54+09 LT  
 SUR STA 55+07 LT

**END PROJECT**  
 STA 56+00



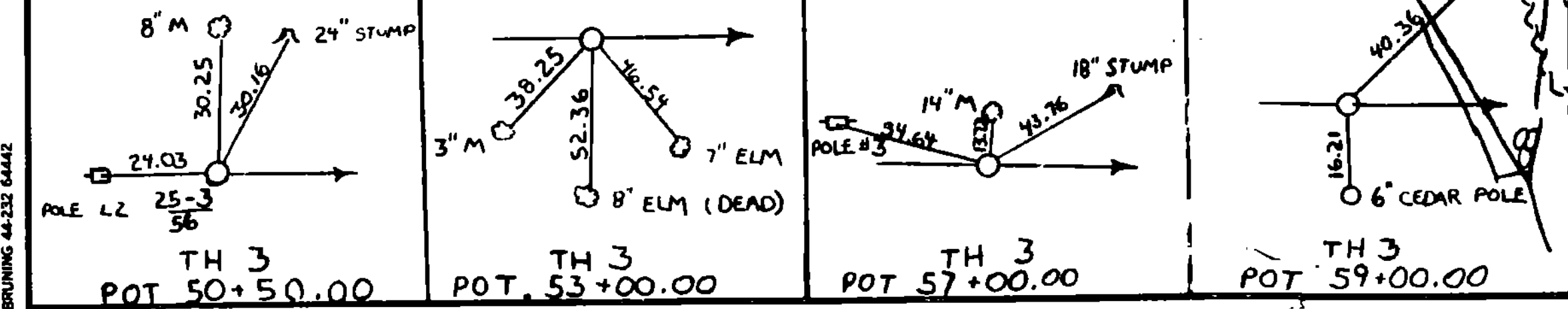
**EXISTING BRIDGE 25 DATA**  
 13' x 40' BAILEY BRIDGE  
 6.6' x 37' WATERWAY



**RURAL SEEDING FORMULA**

FEET	LBS./A	NAME	PUR %	SEED %
3.33	2	CROWN VETCH	97	75
50.70	30	CREeping RED FESCUE	99	85
8.33	5	TIMOTHY	92	85
5.00	3	HIGHLAND BENT GRASS	95	85
16.67	10	PERENNIAL RYE GRASS (VARIETY PERFINE)	99	85
8.34	5	ALFALFA (VARIETY SAMMAC)	99	85
8.33	5	BIRDSPOOT TREFOIL (VARIETY OPURE)	98	85

THE SEED MIXTURE SHALL NOT HAVE A WEED CONTENT  
 EXCEEDING 0.40% BY WEIGHT AND SHALL BE FREE  
 FROM ALL NOXIOUS WEED SEED FERTILIZER 10-20-10



**STATE OF VERMONT**  
**AGENCY OF TRANSPORTATION**

Town Of CHARLESTON Bridge No. 24 & 25  
 Highway No. T.H. 3 Loc Sta. 52+28  
 Surv. Sta. 52+28

**TH 3 OVER CLYDE RIVER**  
**PLAN**

Designed By A CHURCH Drawn By A CHURCH  
 Checked By C. WILLIAMS Date 12-88 Bridge Design Supervisor R GENDRON Date 1-89

PROJECT CHARLESTON PROJECT NO. BRZ 1449 (14)  
 L&C Info. Bridge Sheet No. Sheet 3 of 33