

INDEX OF SHEETS

- 1. TITLE SHEET
- 2. QUANTITY SHEET
- 3. PLAN
- 4. PROFILE
- 5. BORING LOGS
- 6. DETAIL PLAN AND ELEVATION BR. 24
- 7. TYPICAL SECTION AND SUPERSTRUCTURE DETAILS
- 8. GENERAL NOTES AND BRIDGE MARKER
- 9. GENERAL DETAILS
- 10. FRAMING PLAN AND STEEL DETAILS
- 11. BEARING DETAILS
- 12. ABUTMENT DETAILS
- 13. WINGWALL DETAILS
- 14. DETAIL PLAN AND ELEVATION BR. 25
- 15. DETAILS OF FISH HABITAT PROVISIONS
- 16.-19. RIGHT-OF-WAY SHEETS
- 20.-23. ROADWAY SECTIONS
- 24.-33. CHANNEL SECTIONS

STATE OF VERMONT AGENCY OF TRANSPORTATION

Dated: NOV 16 1990
A.H. St Onge Contractor, Inc
 Contractor
Arthur L. St Onge
 Signature
President
 Title
Paul R. Shilbree
 Transportation Secretary's Signature



CONTRACT PLANS
 THESE PLANS DO NOT REFLECT
 CHANGES MADE ON THE PROJECT.

PROPOSED IMPROVEMENT BRIDGE PROJECT

TOWN OF CHARLESTON
COUNTY OF ORLEANS

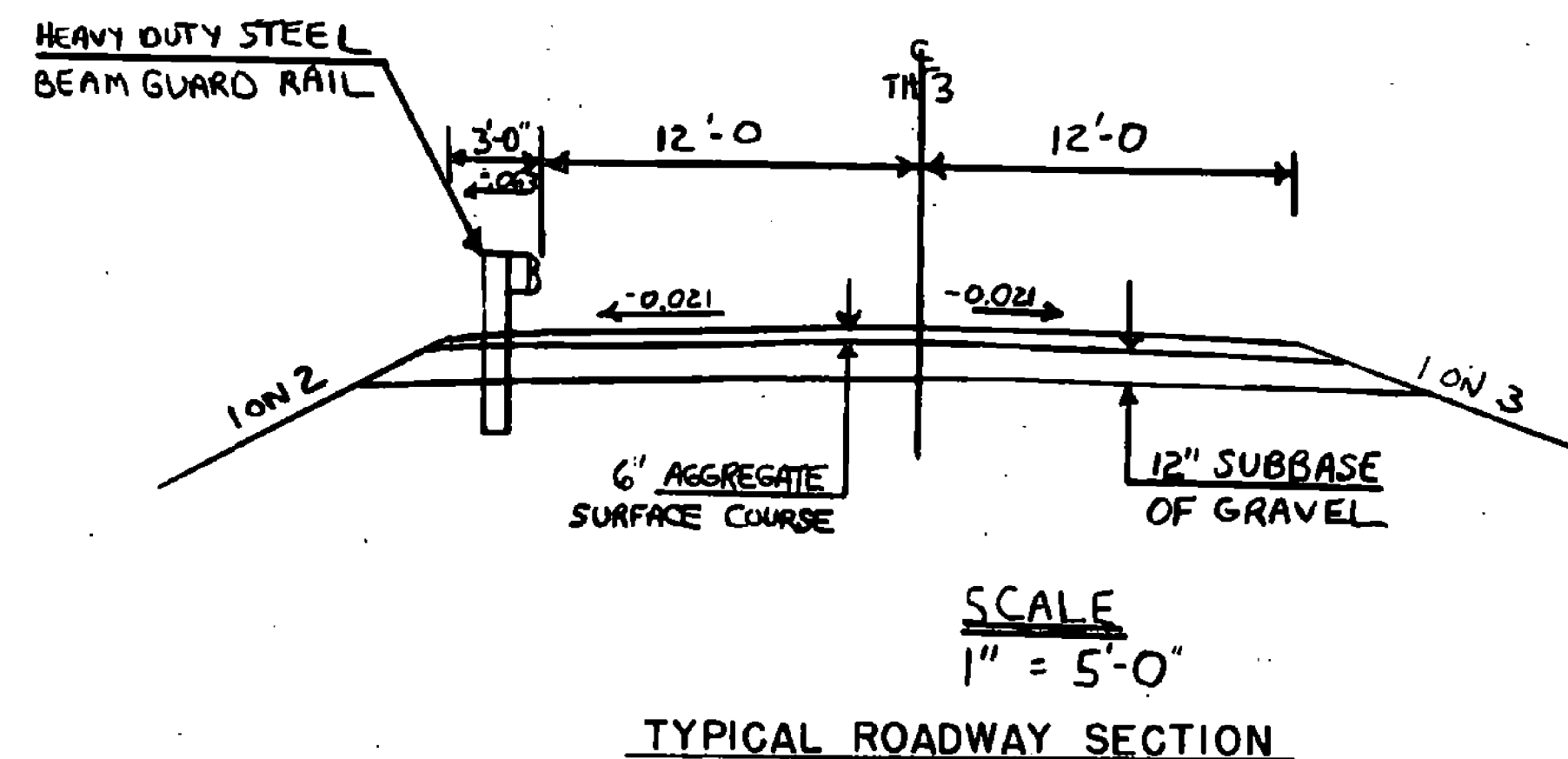
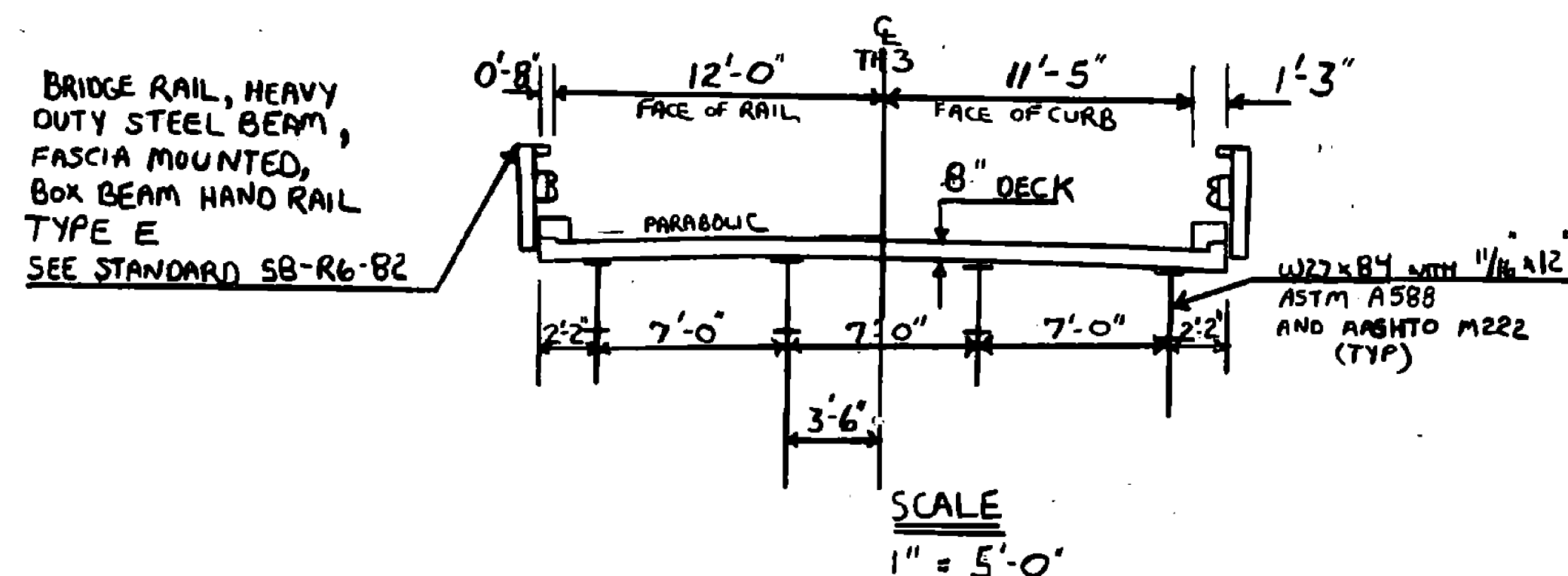
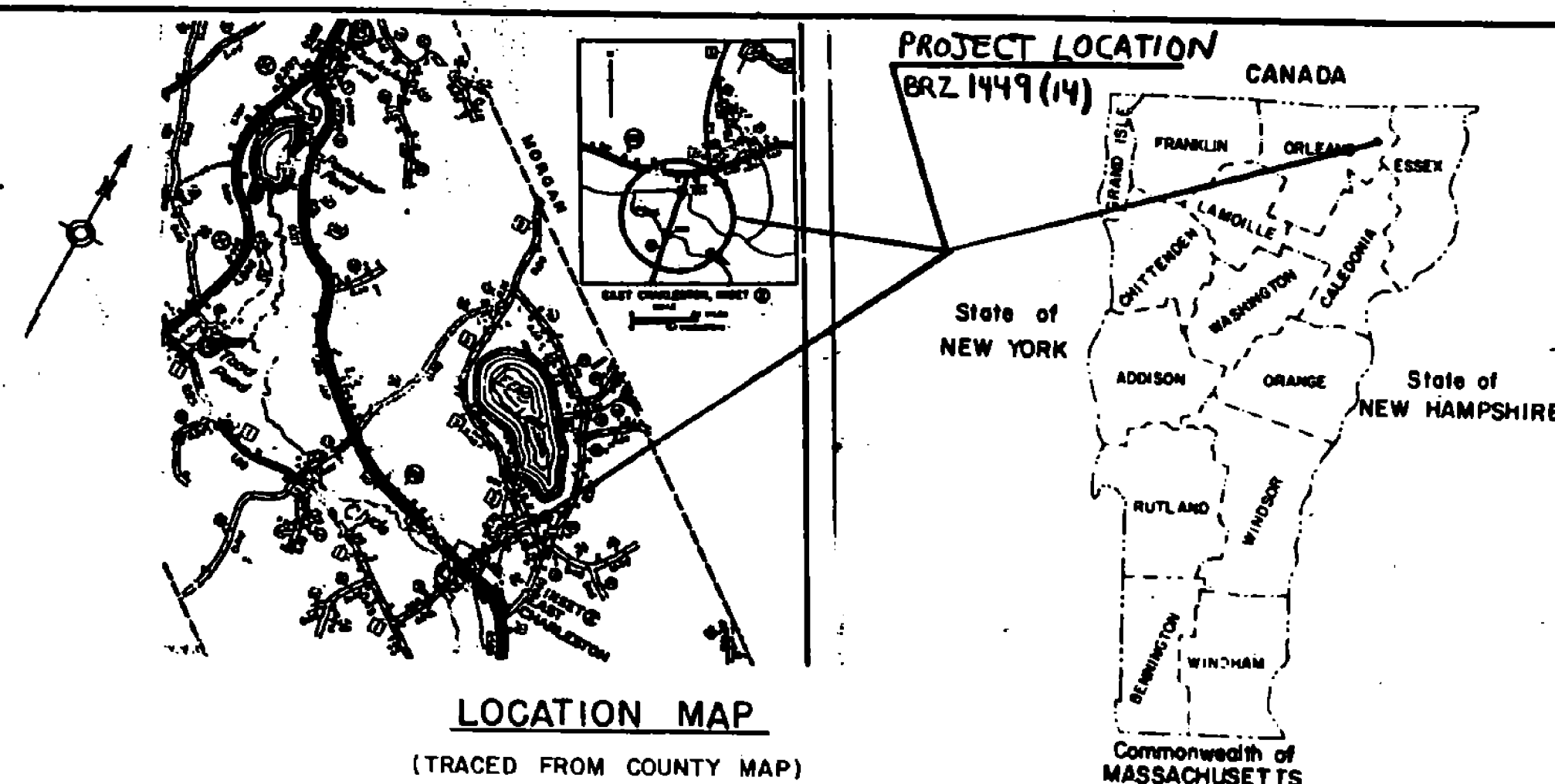
ROUTE NO: TH.3 BRIDGE NO: 24 & 25
 PROJECT LOCATION: BEGINNING AT JUNCTION OF TH3 AND VT 105
 AND EXTENDING SOUTHWEST 595 FT
 PROJECT DESCRIPTION: CONSTRUCT NEW SIMPLE SPAN ROLLED BEAM
 BRIDGE WITH NECESSARY ROADWAY APPROACH AND CHANNEL
 WORK

LENGTH OF STRUCTURE: 59.0 FEET
 LENGTH OF PARTICIPATION ROADWAY: 536.41 FEET
 LENGTH OF NON-PARTICIPATION ROADWAY: 0.0 FEET
 LENGTH OF PROJECT: 595.41 FEET

STRESS LEVELS	LOAD RATING (TONS)						
	H	H5	352	400	4A	4B	5A
INVENTORY 0.55 F.T.	35	44					
POSTED 0.61 F.T.	50	63	86		55	56	73
OPERATING 0.75 F.T.		75	102	111			

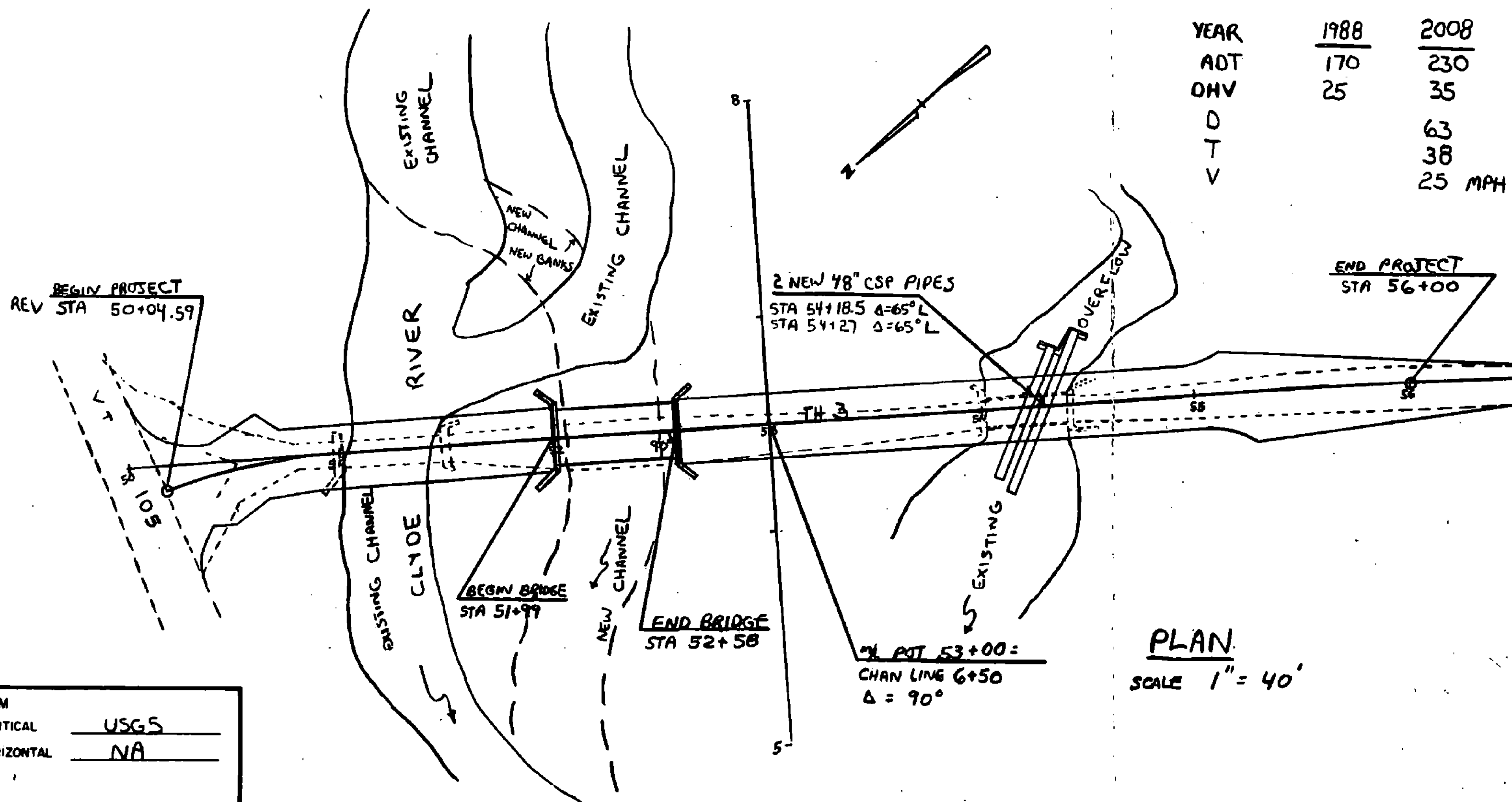
- LIST OF STANDARDS
- D-71A RESIDENTIAL DRIVE 10 JUL 68
 - E-100 CONSTRUCTION APPROACH SIGNS 10 SEP 67
 - E-101 CONSTRUCTION SIGN DETAILS 30 OCT 67
 - E-107 DELINEATION, BARRIERS AND DETOURS 29 APR 68R
 - G-1 HEAVY DUTY STEEL BEAM GUARD RAIL 31 OCT 68R
 - G-1d HEAVY DUTY STEEL BEAM GUARD RAIL 31 OCT 68R
 - BB-RA-82 BRIDGE RAILINGS - GALVANIZED BOX BEAM 13 DEC 68R
 - BB-RS-82 BRIDGE RAILINGS - HEAVY DUTY STEEL BEAM 13 DEC 68R

SEE SHEET 8 OF 33 FOR GENERAL NOTES.
 SEE SHEET 4 OF 33 FOR HYDRAULIC DATA.



TRAFFIC DATA

YEAR	1988	2008
ADT	170	230
OHV	25	35
D		63
T		38
V		25 MPH



- CONVENTIONAL SIGNS
- COUNTY LINE
 - TOWN LINE
 - LIMITS OF ACCESS
 - POINT OF ACCESS
 - FENCE LINE
 - STONE WALL
 - TRAVELED WAY
 - GUARD RAIL
 - RAILROAD
 - SURVEY LINE
 - CULVERT
 - POWER POLE
 - TELEPHONE POLE
 - TREES
 - CONTROL OF ACCESS
 - PROPERTY LINE
 - R.O.W TAKING LINE
 - SLOPE RIGHTS
 - TOP OF CUT
 - TOE OF SLOPE

DATUM

VERTICAL	USGS
HORIZONTAL	NA

THESE PLANS ARE SUBJECT TO SUCH ENGINEERING CHANGES AS MAY BE REQUIRED BY THE FEDERAL HIGHWAY ADMINISTRATION OR THE CHIEF ENGINEER. CONSTRUCTION IS TO BE CARRIED ON IN ACCORDANCE WITH THESE PLANS AND THE STANDARD SPECIFICATIONS FOR CONSTRUCTION DATED 1986, FOR USE ON THESE PROJECTS, INCLUDING ALL SUBSEQUENT PROVISIONS AS ARE INCORPORATED IN THESE PLANS.

SUBMITTED BY ORDER OF THE STATE TRANSPORTATION BOARD

APPROVED: David M. Kelly DATE 3/16/89
 CHIEF ENGINEER

TITLE SHEET
 TH3, BR24 & BR25 OVER CLYDE RIVER

PROJECT	PROJECT NO.
CHARLESTON	BR2 1449 (14)
SHEET 1 OF 33	SHEETS

SJB 7/21/81