

PLAN FOR SQUARE BRIDGES

(DETAILS SHOWN FOR EXP. END; FIXED END SIMILAR EXCEPT R<sub>s</sub> A AND B IN LIEU OF R<sub>s</sub> C, D AND E; SEE SCB-D8-71)

PLAN FOR SKEWED BRIDGES

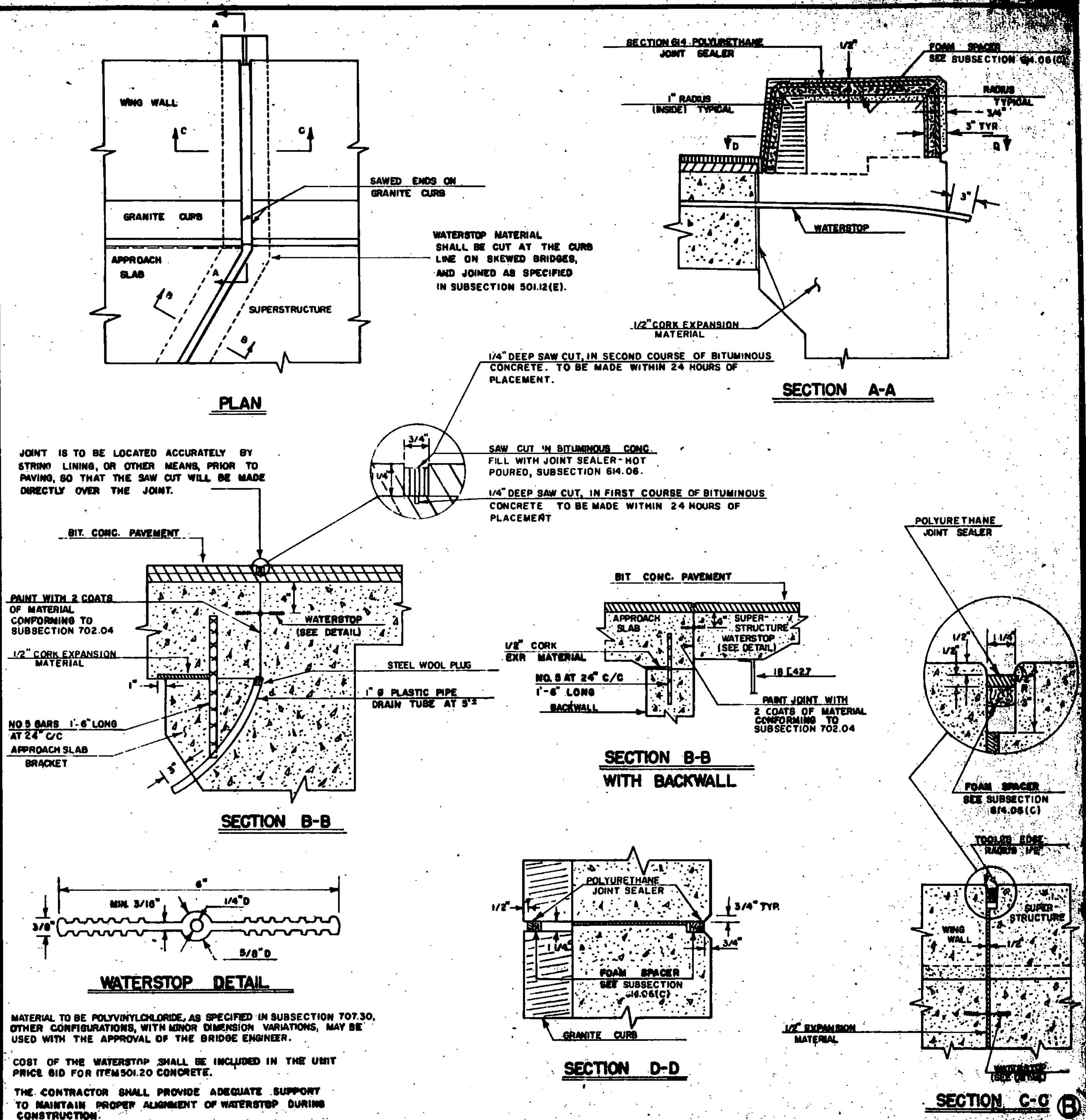
REVISIONS AND CORRECTIONS  
 1. Added notes to saw cut 1st & 2nd courses of Bit. Conc. J.WOOD  
 1-27-75

APPROVED: DATE: 12/14/71

*R.A. Arnold*  
 CHIEF ENGINEER  
*E.H. Stebbins*  
 ASST. CHIEF ENGINEER  
*Frank Spain*  
 BRIDGE ENGINEER

DETAILS OF W BEAM BRIDGES

- Ⓐ CURTAIN WALL AT BEARING DEVICES
- Ⓑ FIXED END JOINT DETAILS



MATERIAL TO BE POLYVINYLCHLORIDE, AS SPECIFIED IN SUBSECTION 707.30. OTHER CONFIGURATIONS, WITH MINOR DIMENSION VARIATIONS, MAY BE USED WITH THE APPROVAL OF THE BRIDGE ENGINEER.

COST OF THE WATERSTOP SHALL BE INCLUDED IN THE UNIT PRICE BID FOR ITEM 501.20 CONCRETE.

THE CONTRACTOR SHALL PROVIDE ADEQUATE SUPPORT TO MAINTAIN PROPER ALIGNMENT OF WATERSTOP DURING CONSTRUCTION.

VERMONT  
 DEPARTMENT OF HIGHWAYS  
 STRUCTURE STANDARDS

SCB-D9-71