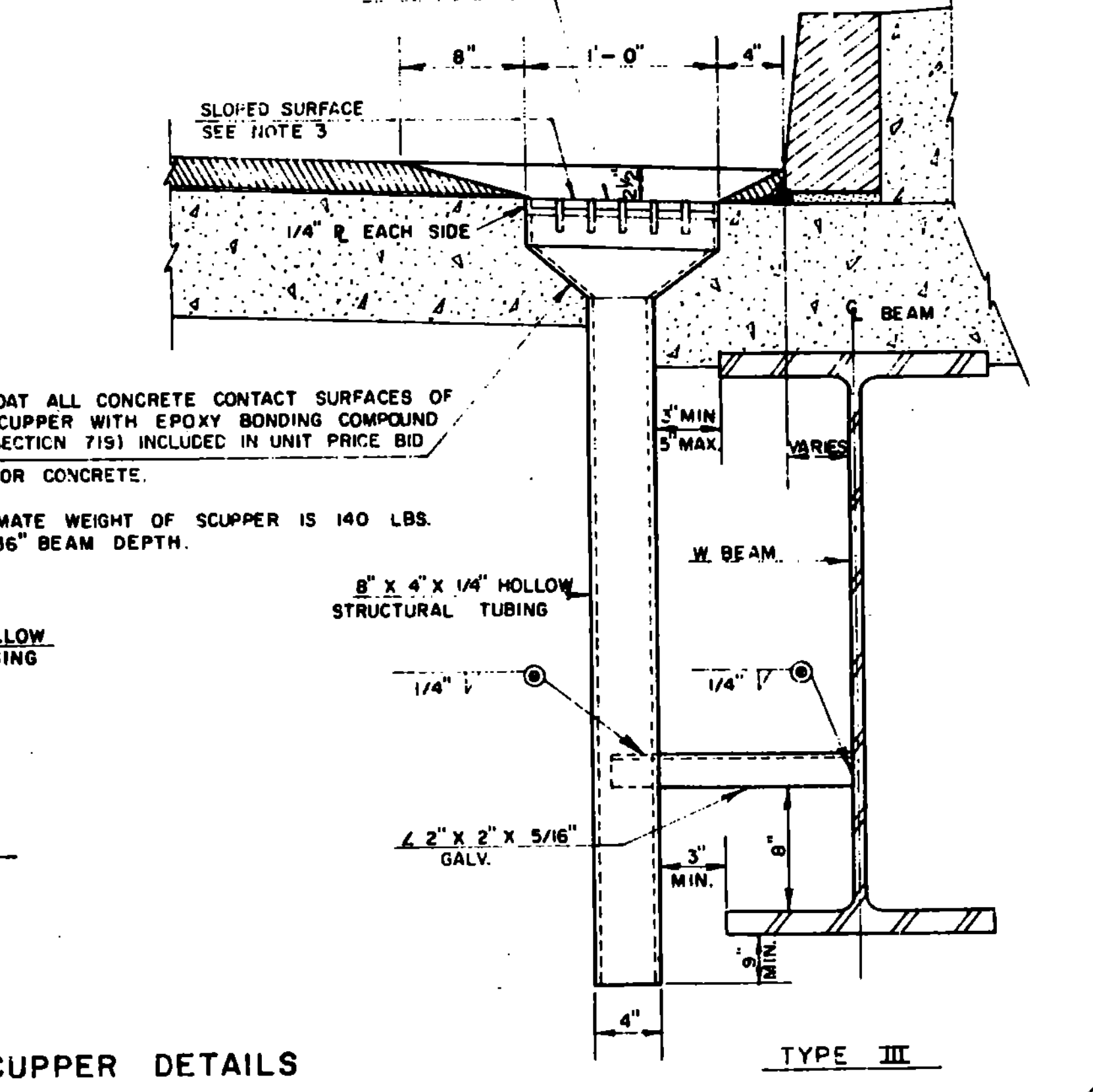
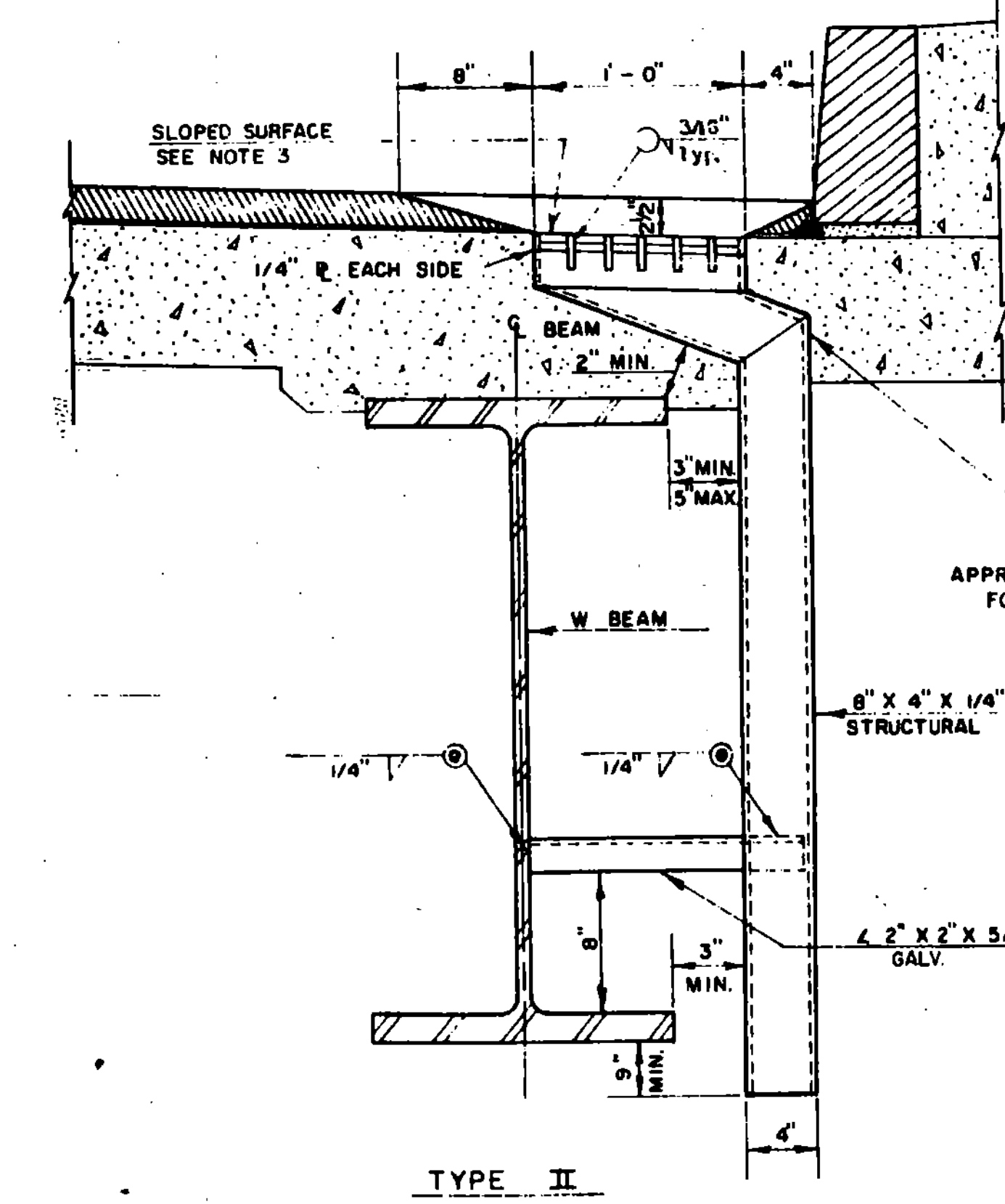
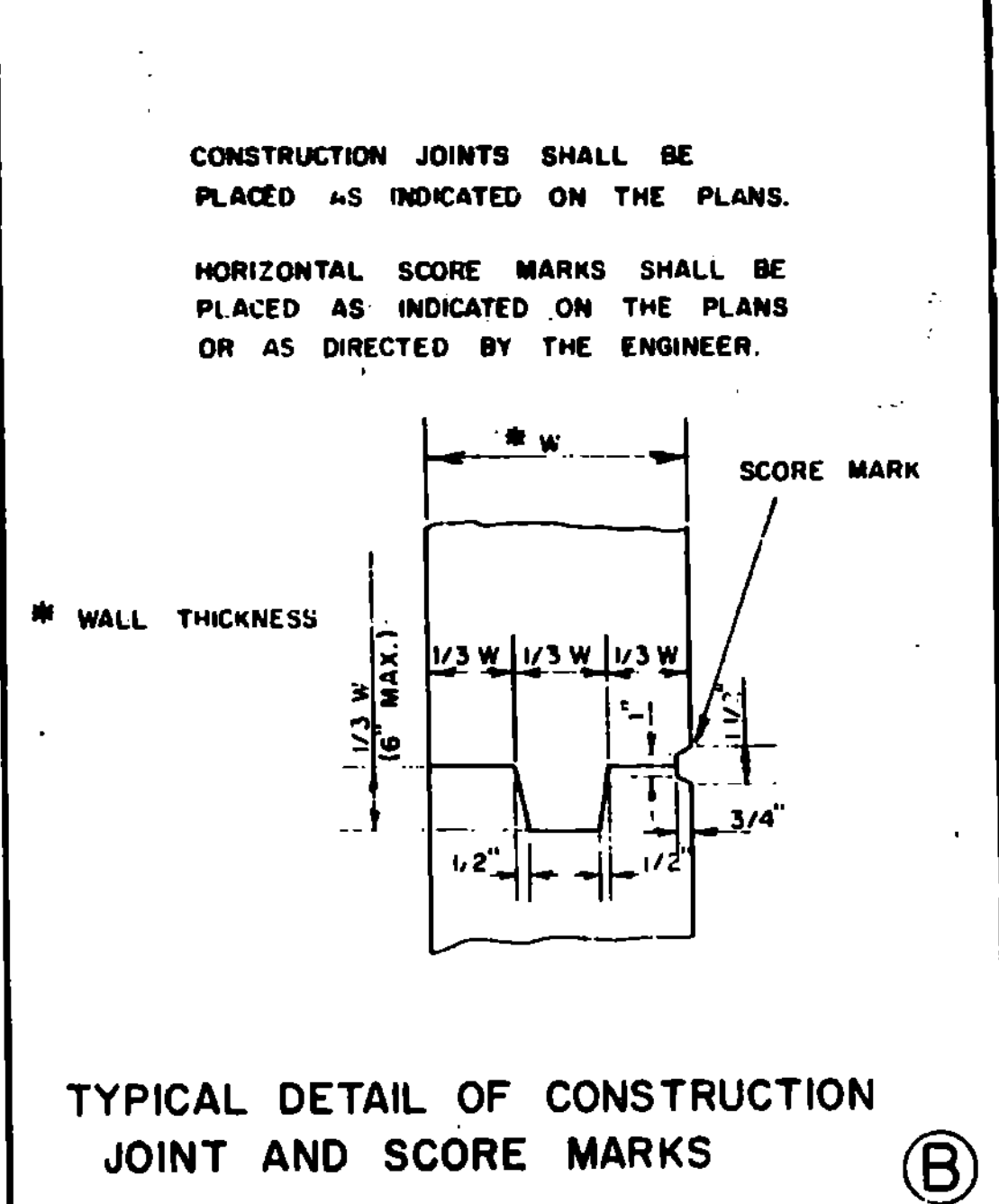


**NOTES -**  
THE FOLLOWING NOTES APPLY TO ALL SCUPPERS UNLESS OTHERWISE DETAILED ON PROJECT PLANS:

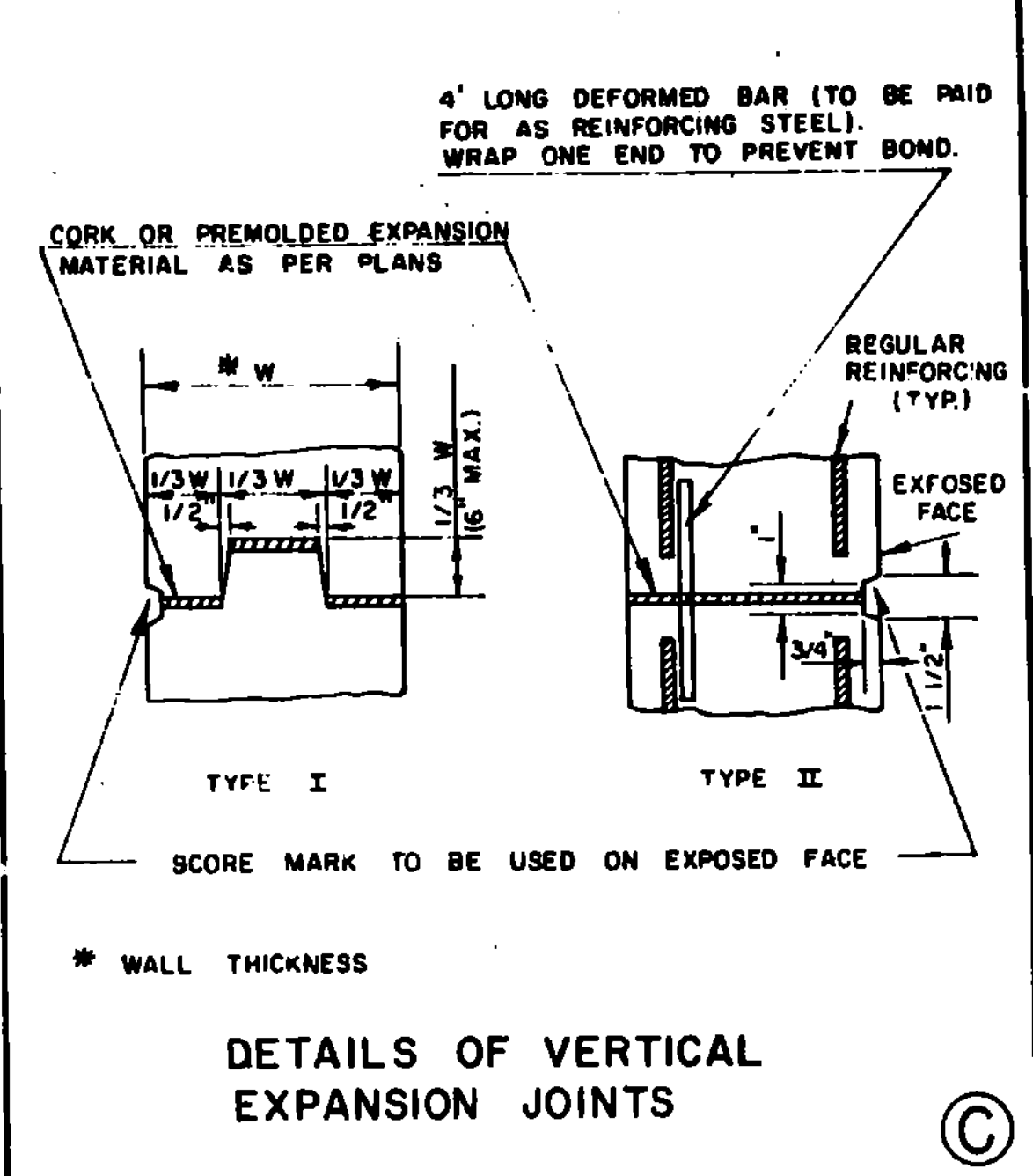
- HOLLOW STRUCTURAL STEEL TUBING SHALL CONFORM TO ASTM A-500 OR A-501.
- ALL PLATES, BARS AND ANGLES SHALL CONFORM TO ASTM A-36.
- ALL SCUPPERS SHALL BE GALVANIZED ACCORDING TO ASTM A-123 AFTER FABRICATION.
- TOP SURFACE OF SCUPPERS MUST BE SLOPED TO MATCH ROADWAY CROSS SLOPE AND GRADE.
- END SCUPPERS ARE TO BE PLACED MIDWAY BETWEEN CURB AND FIRST DIAPHRAGM ASSEMBLY.
- INTERMEDIATE SCUPPERS ARE TO BE PLACED MIDWAY BETWEEN DIAPHRAGM ASSEMBLIES.
- ON PROJECTS WITH NO BITUMINOUS WEATHER SURFACE, SET SCUPPERS 3/4" BELOW TOP OF CONCRETE SLAB.



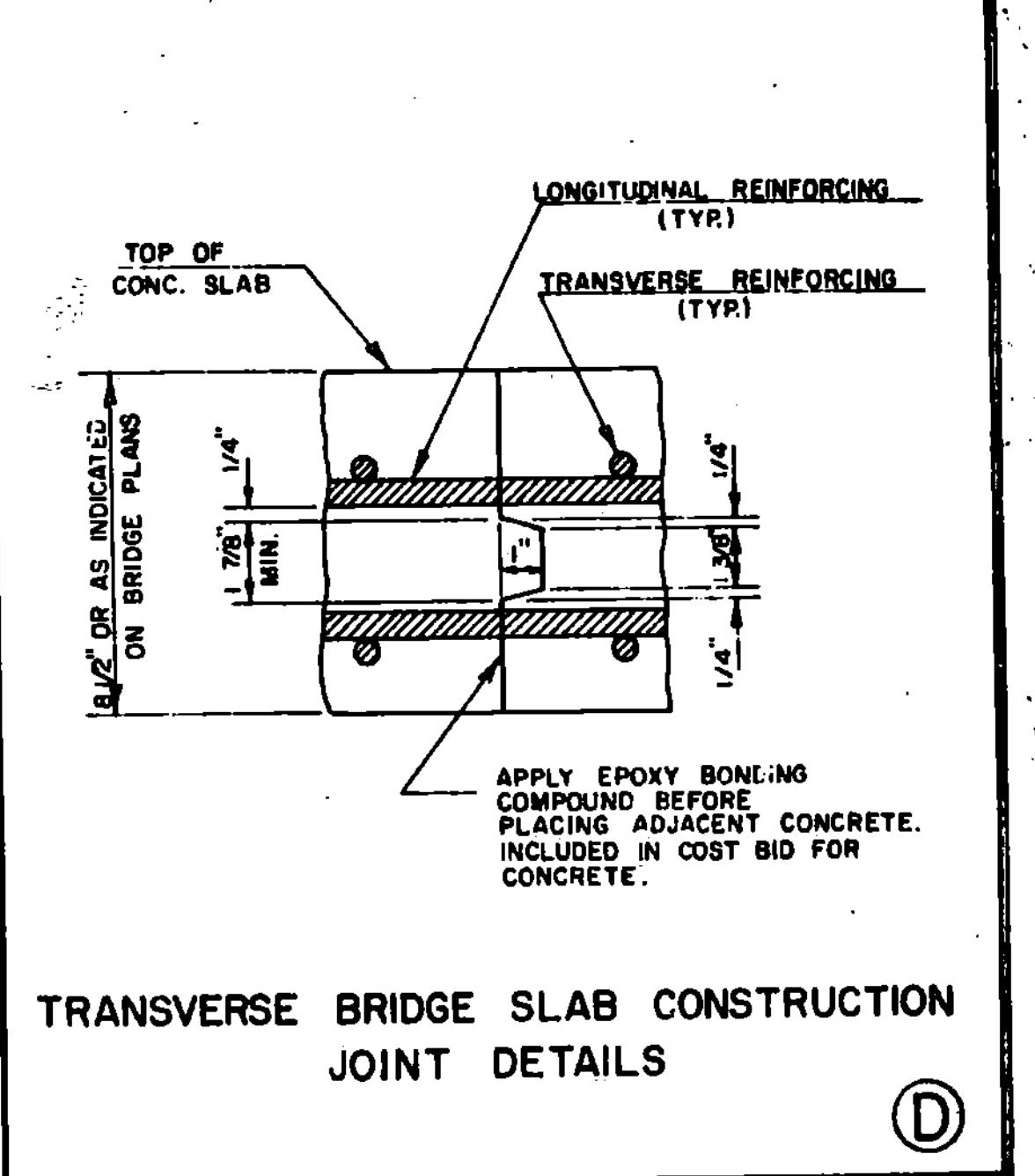
**SCUPPER DETAILS**



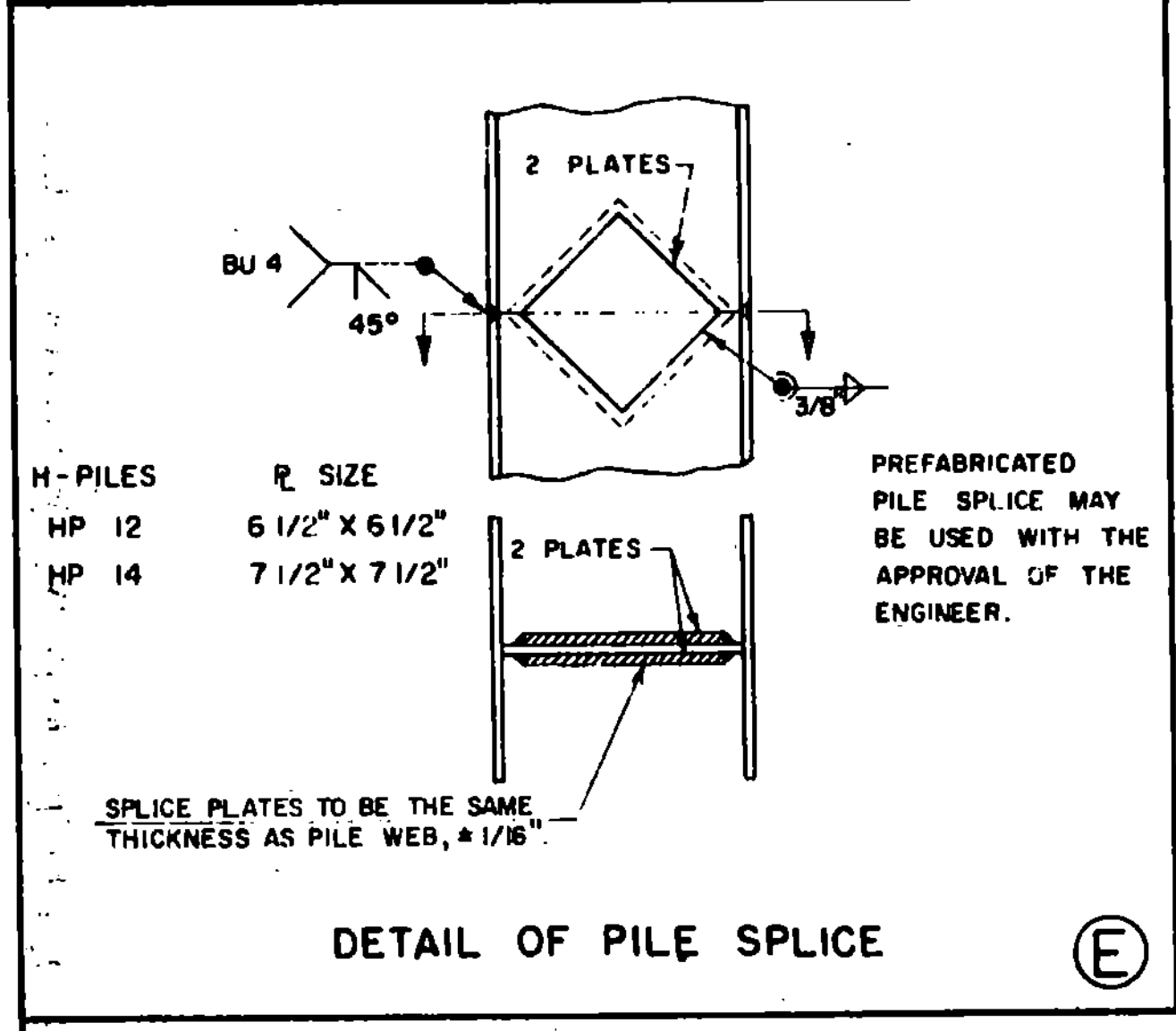
**TYPICAL DETAIL OF CONSTRUCTION JOINT AND SCORE MARKS**



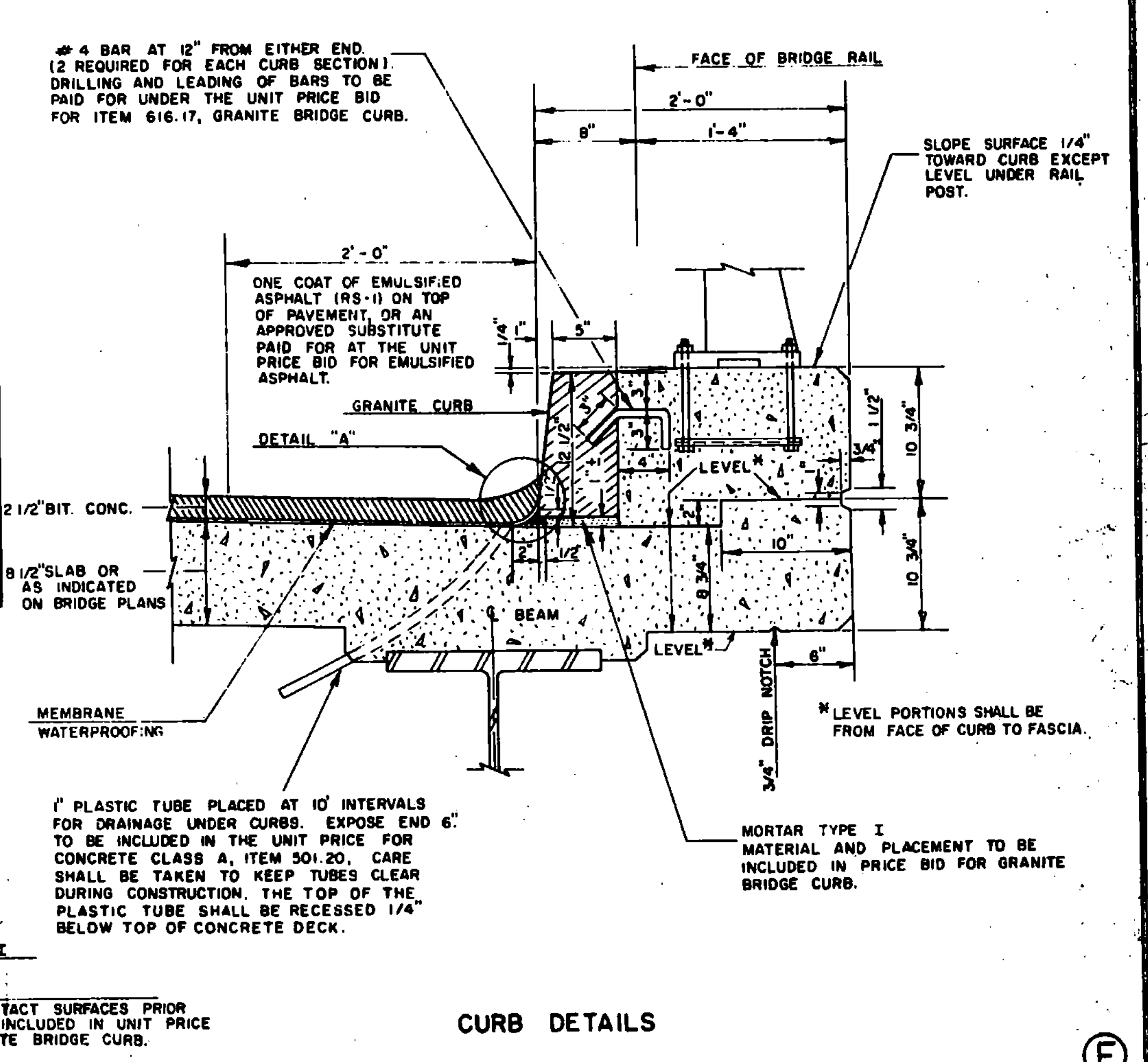
**DETAILS OF VERTICAL EXPANSION JOINTS**



**TRANSVERSE BRIDGE SLAB CONSTRUCTION JOINT DETAILS**



**DETAIL OF PILE SPLICE**



**CURB DETAILS**

**REVISIONS AND CORRECTIONS**

1.- Added 1/2" φ bars to scupper details	J. WOOD 1-27-75
2.- Added to note on 1" plastic tubes	J. WOOD 1-27-75
3.- Revised pile splice weld.	W. Tripp 12-29-76
4.- Revised scupper length and pile splice detail	W. Tripp 12-15-76
5.- Revised slab and pavement thicknesses	W. Tripp 4-3-78
6.- Revised scupper notes.	W. Tripp 1-3-79

**APPROVED** DATE: *Nov. 28 1973*

*E. H. Stuckney*  
CHIEF ENGINEER

*R. O. Munn*  
ASST. CHIEF ENGINEER

*W. M. Smith*  
BRIDGE ENGINEER

**DETAILS OF W BEAM BRIDGES**

Ⓐ SCUPPER DETAILS  
Ⓑ Ⓒ Ⓓ CONSTRUCTION DETAILS  
Ⓔ PILE DETAILS  
Ⓕ CURB DETAILS

**VERMONT AGENCY OF TRANSPORTATION**

**STANDARD**

**SCB-D6-73**