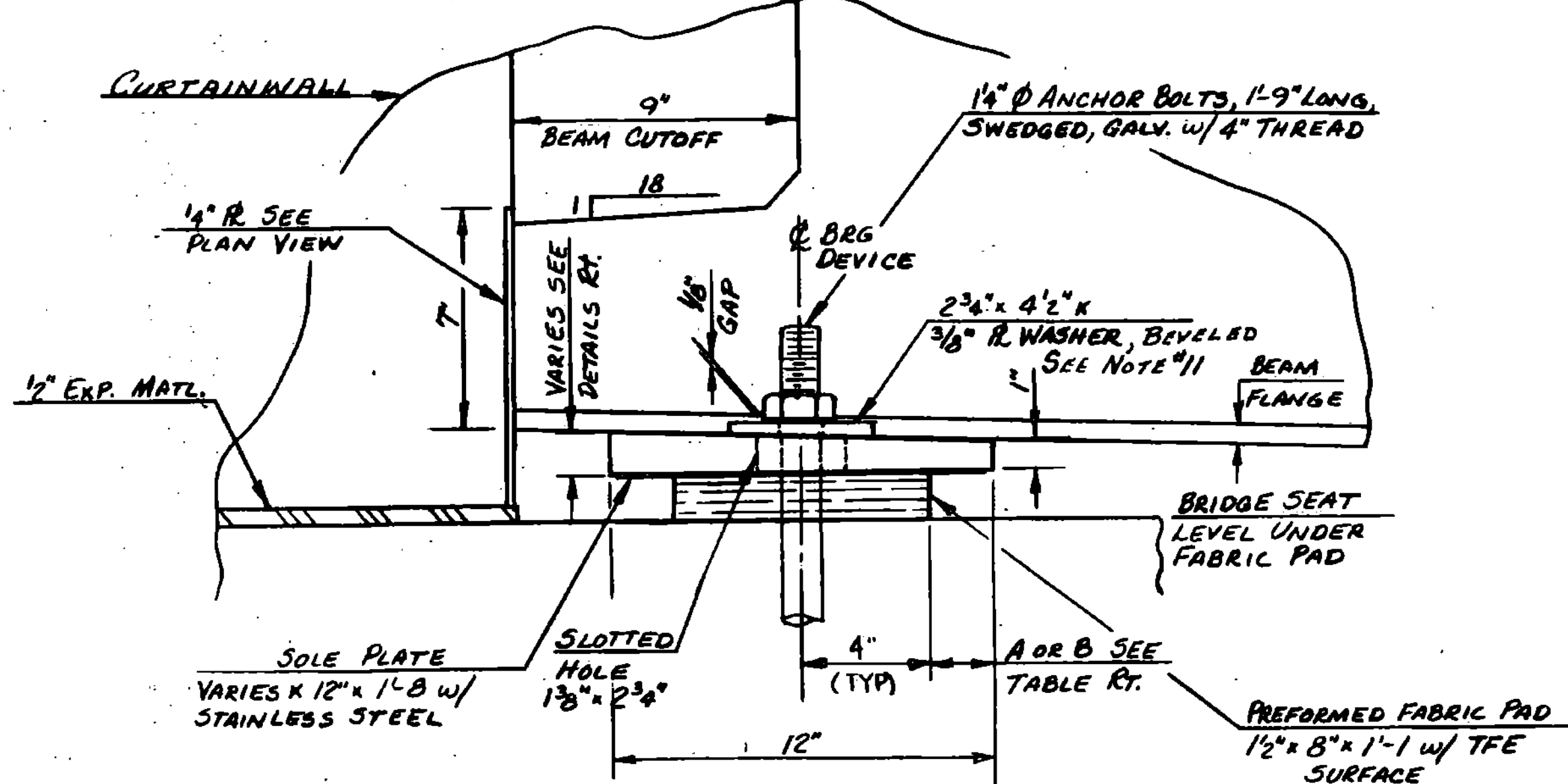


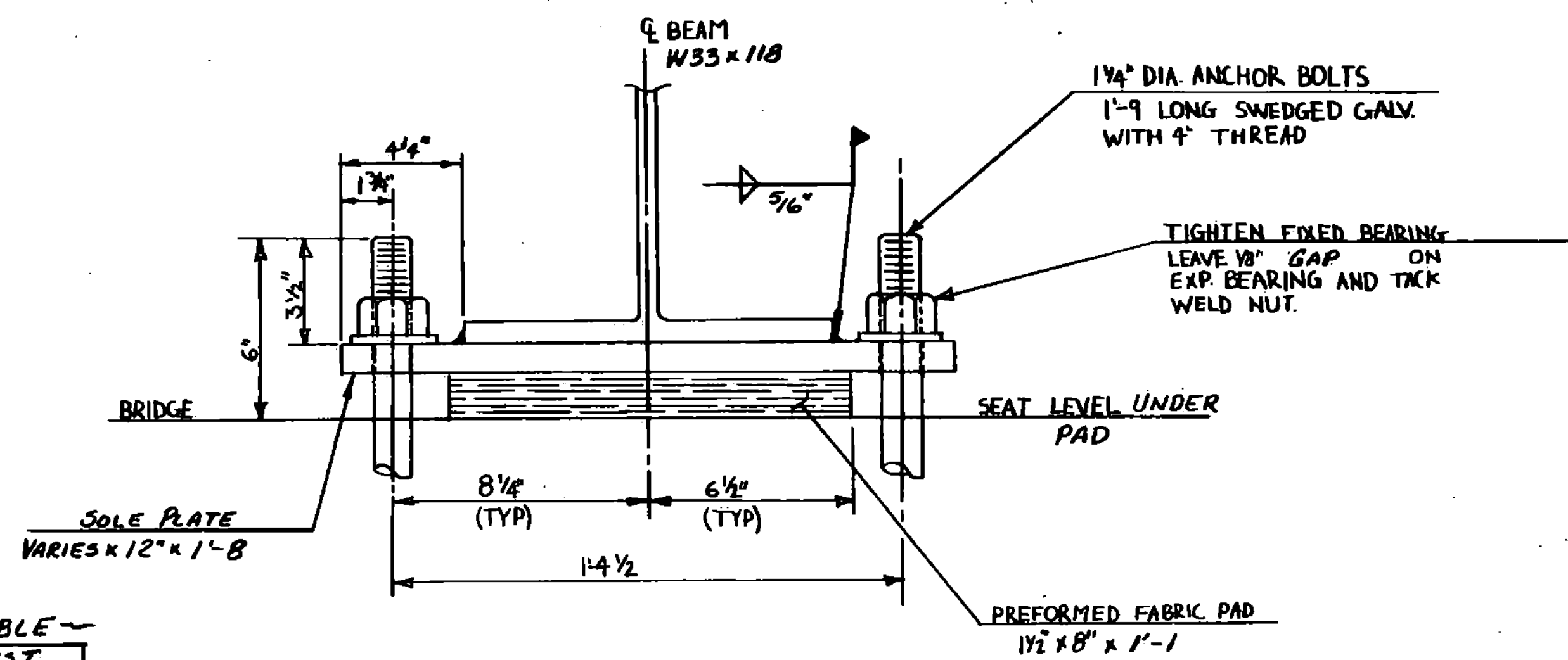
PLAN FIXED BEARINGS AT ABUT #1

EXPANSION BEARINGS AT ABUTMENT #2 SAME EXCEPT OPPOSITE HAND WITH SLOTTED HOLES, STAINLESS STEEL AND TEFLON SURFACE.
SCALE: 3"=1'-0"



SIDE VIEW EXPANSION BEARINGS AT ABUT. #2

FIXED BEARINGS AT ABUTMENT #1 SAME EXCEPT NUTS SHALL BE TIGHT, NO STAINLESS STEEL, TEFLON OR SLOTTED HOLE.
SCALE: 3"=1'-0"



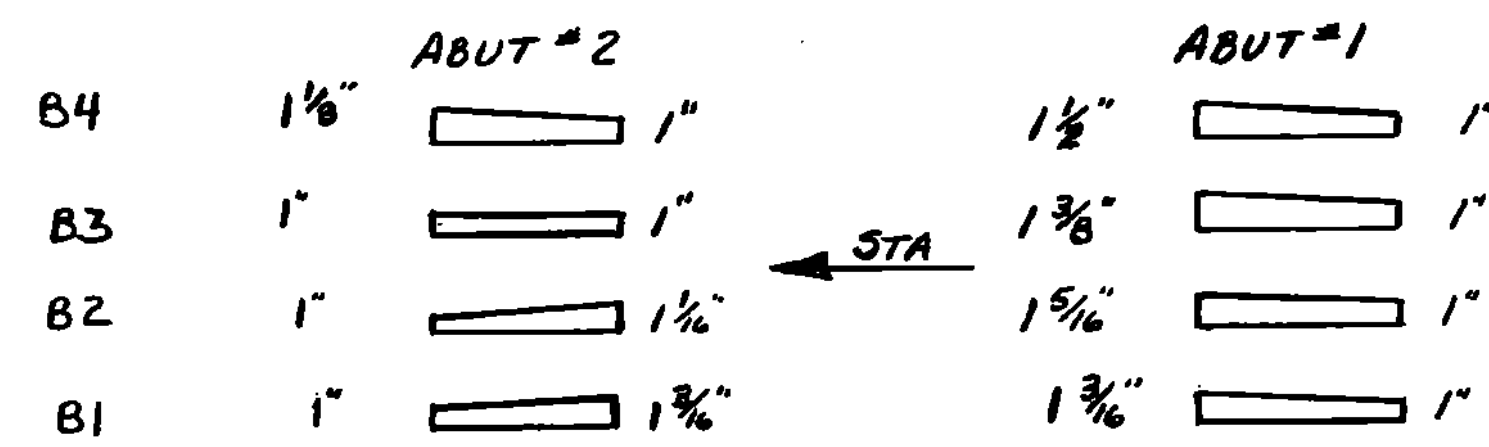
FRONT VIEW SCALE 3"=1'-0"

SOLE PLATE & BEARING DETAIL NOTES

1. TFE EXPANSION BEARINGS SHALL CONFORM TO SUBSECTION 731.
2. FIXED BEARINGS SHALL CONFORM TO ALL APPLICABLE SECTIONS OF SUBSECTION 731 (OMIT TFE & STAINLESS STEEL).
3. BEARINGS SHALL BE PAID FOR UNDER THE ITEM 531J0 "BEARING DEVICE ASSEMBLY".
4. SHOP DRAWINGS CONFORMING TO SUBSECTION 531D3 MUST BE SUBMITTED, AND INCLUDE THE WELDING PROCEDURE IF THE STAINLESS STEEL PLATE IS GOING TO BE WELDED TO THE SOLE PLATE, OR THE BONDING PROCEDURE IF THE STAINLESS STEEL PLATE IS BONDED TO THE SOLE PLATE.
5. SOLE PLATES AND ANCHOR BOLTS ARE TO BE GALVANIZED OR METALLIZED AS PER GENERAL SPECIAL PROVISION 531D2 AND 531D4B FOR THIS PROJECT.
6. THE CONCRETE SURFACE UNDER THE BEARINGS SHALL BE LEVEL.
7. SEE STANDARD DRAWING SCB-D9-71 DETAIL "A" FOR ADDITIONAL DETAILS FOR BLOCKING OUT THE BEARINGS IN THE CURTAIN WALLS.
8. THE "A" DISTANCE IS THE FINAL SETTING FOR THE SOLE PLATE BEFORE WELDING TO THE BEAM, BEFORE PLACING THE DECK.
9. IF A BEARING DEVICE SCHEME OTHER THAN THE ONE SHOWN IS USED, THE BEAM SEAT ELEVATIONS MAY HAVE TO BE ADJUSTED ACCORDINGLY.

~ TEMPERATURE TABLE ~

TEMP. °F.	DIST. A	DIST. B
0°	2 ⁵ / ₈ "	2 ⁴ / ₈ "
15°	2 ⁷ / ₁₆ "	2 ³ / ₁₆ "
30°	2 ⁷ / ₁₆ "	2 ¹ / ₁₆ "
45°	2 ³ / ₈ "	2"
60°	2 ¹ / ₄ "	1 ¹⁵ / ₁₆ "
75°	2 ³ / ₁₆ "	1 ¹³ / ₁₆ "
90°	2 ¹ / ₈ "	1 ³ / ₄ "



~ SOLE PLATE THICKNESSES ~ N.T.S.

10. DIMENSION "B" IS DIMENSION "A" MINUS MOVEMENT WHEN PLACING THE DECK WITH DIMENSION "B" MEASURED AFTER THE BRIDGE IS COMPLETE.

11. USE STD. BEVEL WASHERS AT ABUT. #1

STATE OF VERMONT AGENCY OF TRANSPORTATION

Town of CHESTER	Bridge No. 67
Highway No. T.H. 9	Loc. Sta. Surv. Sta.
T.H. 9 OVER WILLIAMS RIVER	
BEARING DEVICE DETAILS	
Designed By R.P. GENDRON	Drawn By T. SUMNER
Checked By R.P. GENDRON	Date 10-15-86
Bridge Design Supervisor R.L. Oatley Date 11-86	
PROJECT CHESTER	PROJECT NO. BRZ 1442(10)
L.C.C. Info.	
Bridge Sheet No.	Sheet 9 of 26