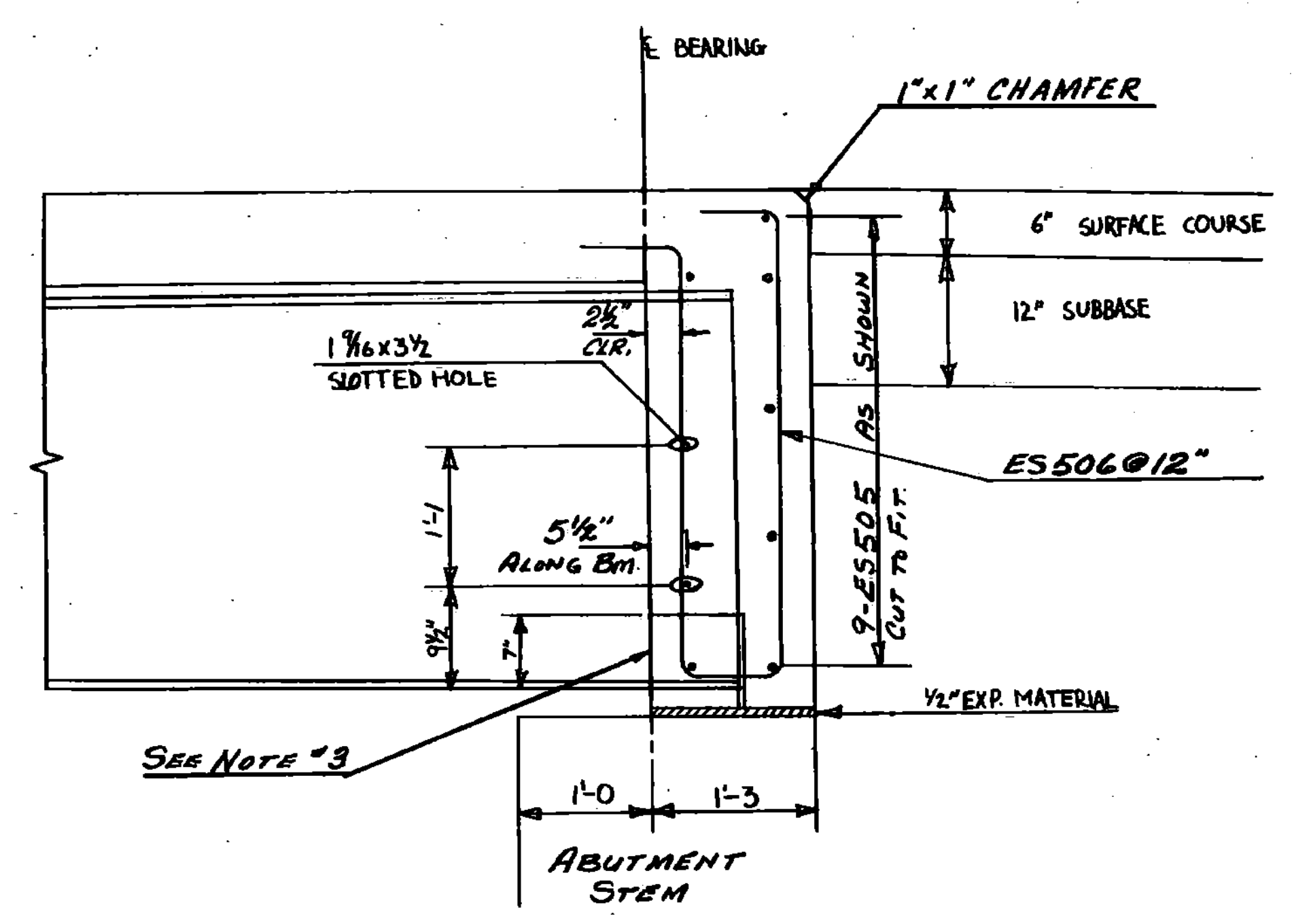


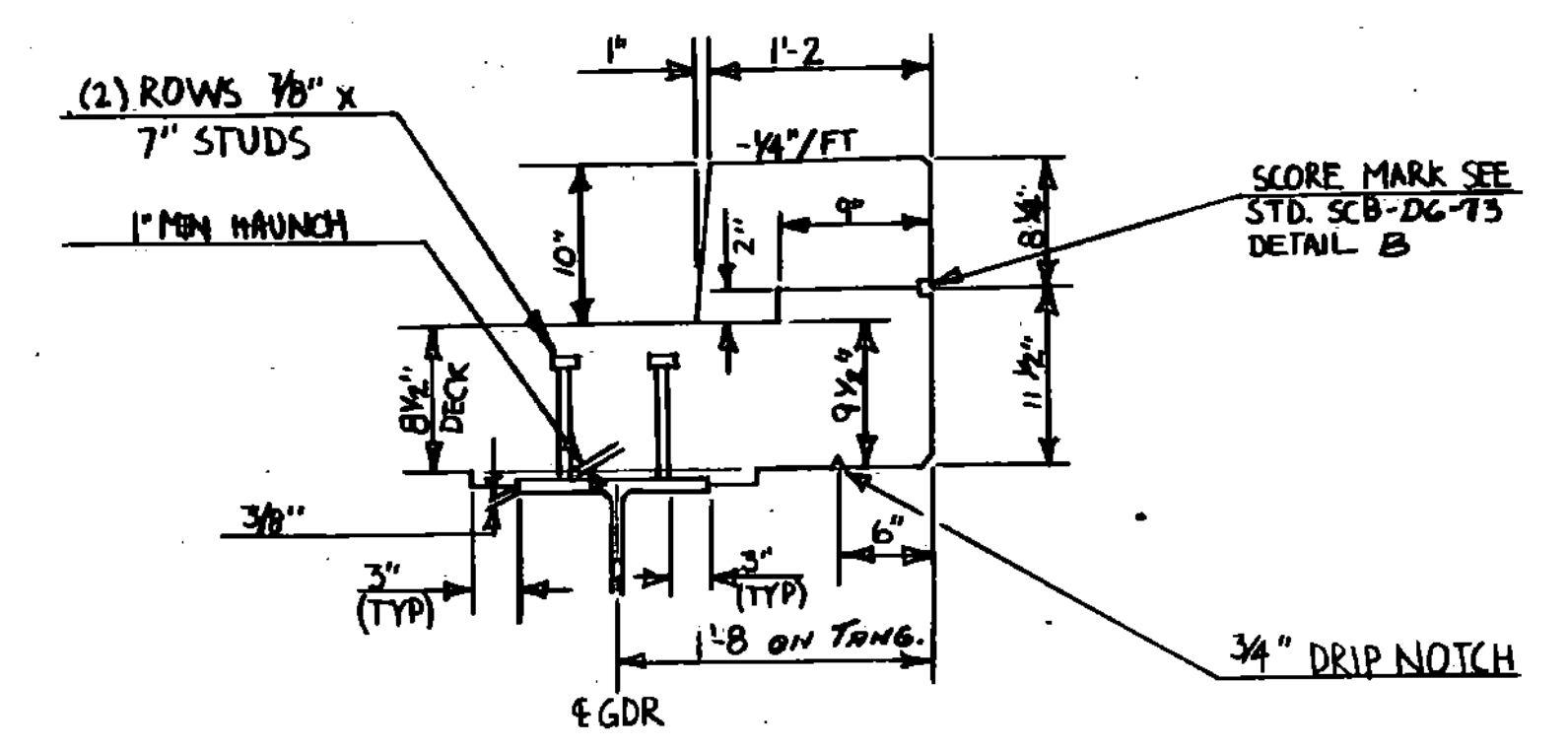
TYPICAL SECTION
SCALE 1/2" = 1'-0"



TYPICAL SECTION NORMAL TO
ABUTMENT SCALE 1" = 1'-0"

NOTES

1. FOR DRIP PLATE DETAILS SEE STANDARD SCB-D7-71, DETAIL 'C'.
2. FOR ADDITIONAL BEAM HAUNCH DETAILS SEE STANDARD SCB-D7-71, DETAIL 'F'.
3. FOR BEARING BLOCKOUT DETAILS SEE STANDARD SCB-D9-71, DETAIL 'A'.
4. ALL REINFORCING IN THE DECK AND CURTAIN WALLS SHALL BE EPOXY COATED.
5. FOR CURB AND RAILING DETAILS SEE STANDARD SB-R6-B2.



CURB HAUNCH & SHEAR
CONNECTOR DETAIL
SCALE 1" = 1'-0"

| | |
|--|--------------------------|
| STATE OF VERMONT AGENCY OF TRANSPORTATION | |
| Town of CHESTER | Bridge No. 67 |
| Highway No. T.H. 9 | Log Sta. Surv. Sta. |
| T.H. 9 OVER WILLIAMS RIVER | |
| TYPICAL SECTION | |
| Designed By R.P. GENDRON | Drawn By T. SUMNER |
| Checked By R.P. GENDRON | Bridge Design Supervisor |
| Date 10-20-86 | Date 11-86 |
| PROJECT CHESTER | PROJECT NO. BRZ 1442(10) |
| I&C. Info. | |
| Bridge Sheet No. | Sheet 6 of 28 |

BRIDGE 44-332 6442

BR-6